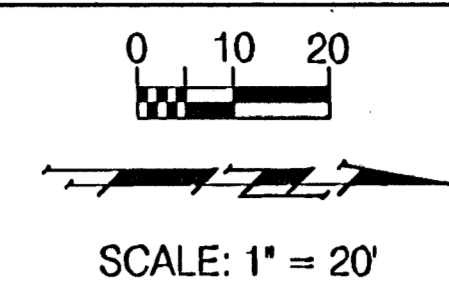
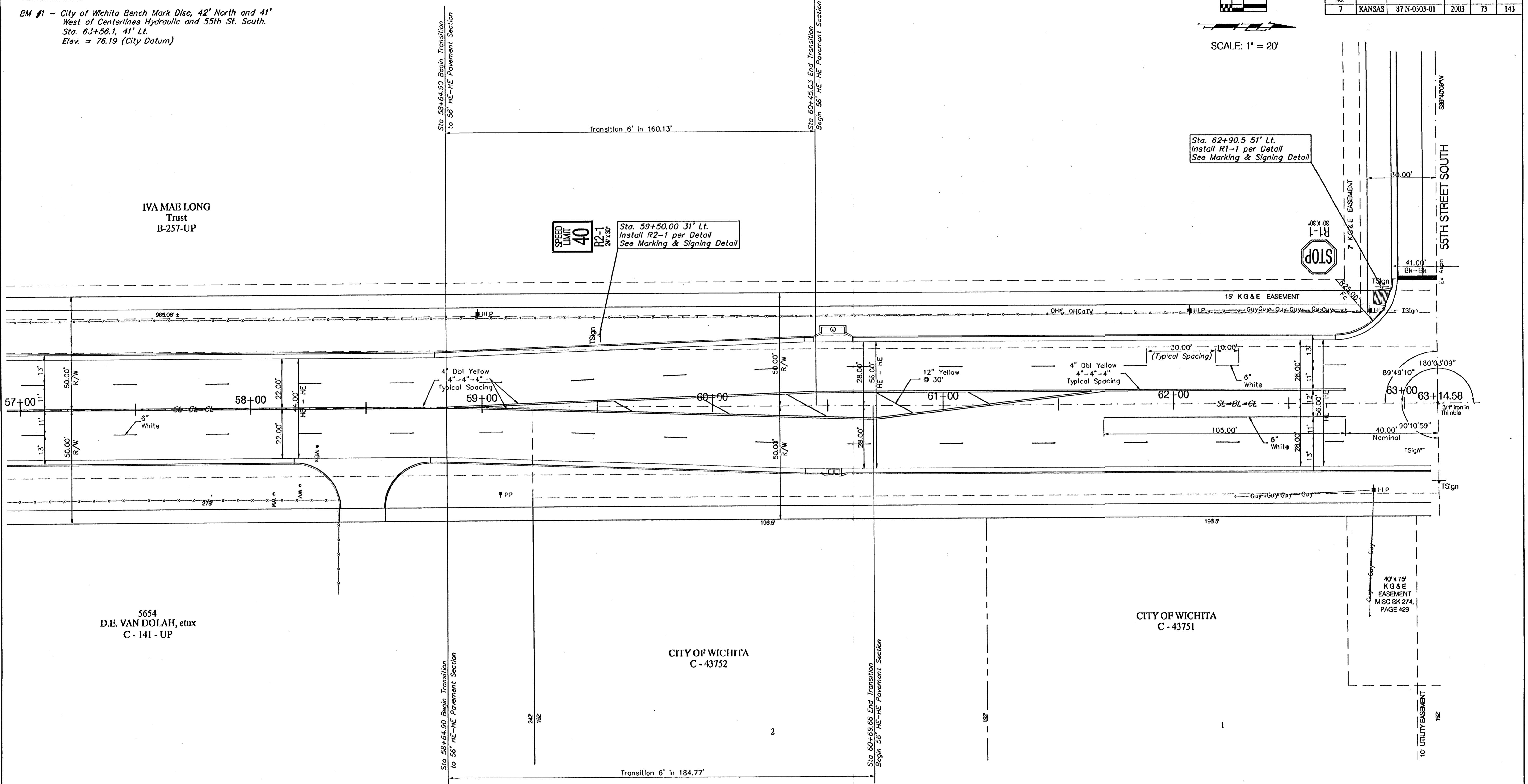


BENCHMARKS:
 BM #1 - City of Wichita Bench Mark Disc, 42' North and 41' West of Centerlines Hydraulic and 55th St. South.
 Sta. 63+56.1, 41' Lt.
 Elev. = 76.19 (City Datum)



FINA REGION NO.	STATE	PROJECT NO.	FISCAL YEAR	SHEET NO.	TOTAL SHEETS
7	KANSAS	87-N-0303-01	2003	73	143



PROJECT NUMBER 472-83902		SHEET NAME Mark03		ENGINEERING DIRECTORY F:\Eng\Hydraulic_ph2\Traffic		CAPITAL IMPROVEMENT PROJECT			SHEET 73 OF 143	
DESIGN JFB	DRAWN TCA	APPROVED JFB/KK	DATE March 04	SCALE 1"=20'	BAUGHMAN NO 99-09-E451	PAVEMENT MARKING PLAN				ENGINEERING, SURVEYING, & PLANNING
							HYDRAULIC AVE PAVING - SOUTH OF 57th STREET SOUTH TO 47th STREET SOUTH		316-262-7271 • 316 ELLIS • WICHITA, KANSAS 67211	