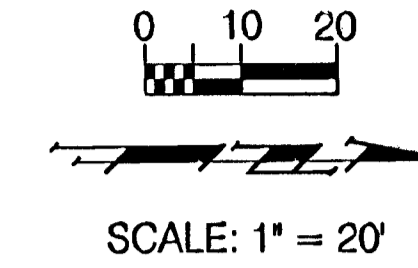
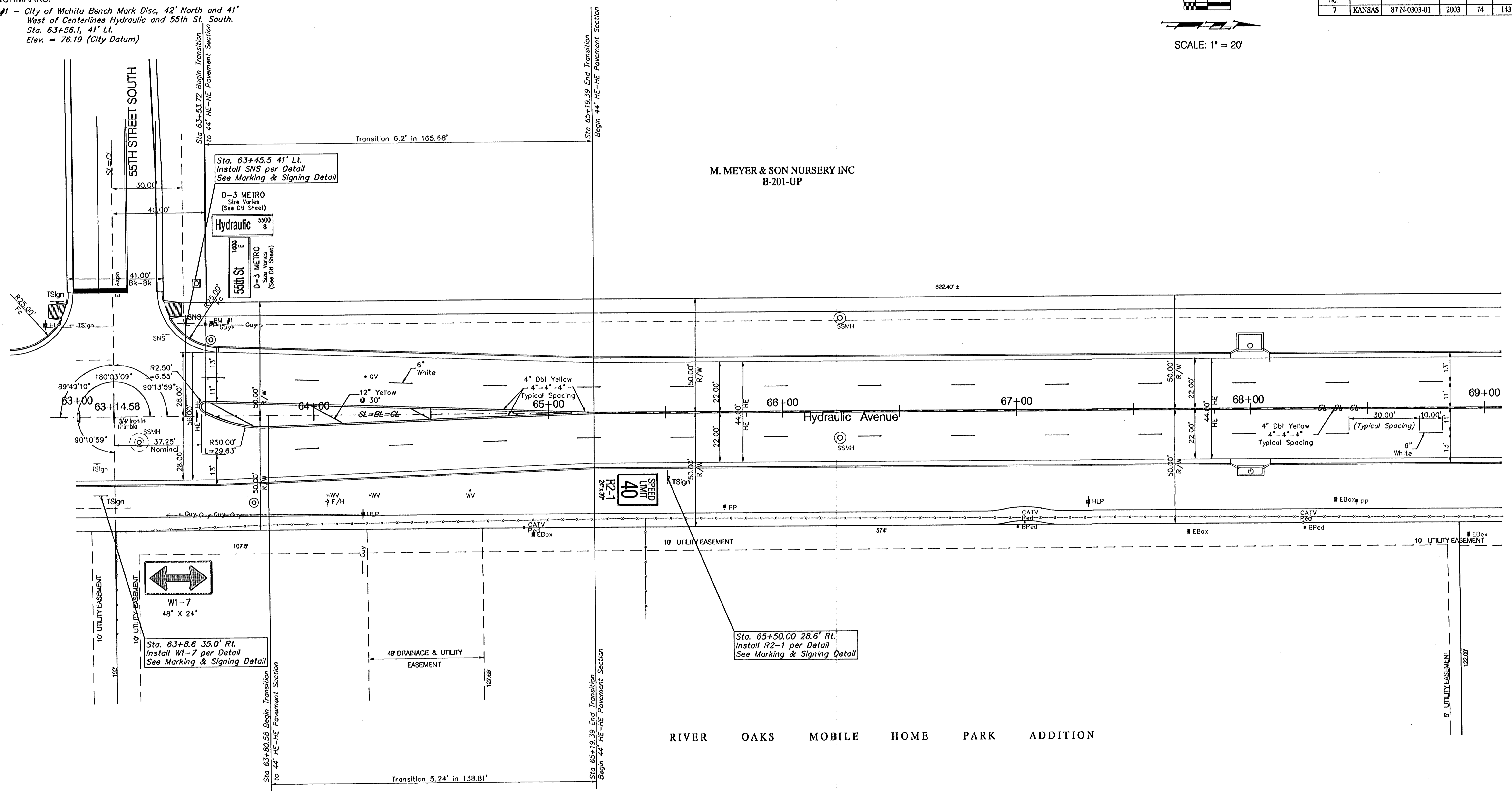


**BENCHMARKS:**  
 BM #1 - City of Wichita Bench Mark Disc, 42' North and 41' West of Centerlines Hydraulic and 55th St. South.  
 Sta. 63+56.1, 41' Lt.  
 Elev. = 76.19 (City Datum)



| FINA REGION NO. | STATE  | PROJECT NO.  | FISCAL YEAR | SHEET NO. | TOTAL SHEETS |
|-----------------|--------|--------------|-------------|-----------|--------------|
| 7               | KANSAS | 87 N-0303-01 | 2003        | 74        | 143          |



|   |              |                      |                  |   |                           |
|---|--------------|----------------------|------------------|---|---------------------------|
| PROJECT NUMBER<br>472-83902   |              | SHEET NAME<br>mark04 |                  | ENGINEERING DIRECTORY<br>R:\Eng\Hydraulic_pls2\Traffic  |                           |
| DESIGN<br>JFB   | DRAWN<br>TCA | APPROVED<br>JFB/KK   | DATE<br>March 04 | SCALE<br>1"=20'   | BAUGHMAN NO<br>99-09-E451 |
| CAPITAL IMPROVEMENT PROJECT<br><b>PAVEMENT MARKING PLAN</b><br>HYDRAULIC AVE PAVING - SOUTH OF 57th STREET SOUTH TO 47th STREET SOUTH |              |                      |                  | <b>BAUGHMAN COMPANY, P.A.</b><br>ENGINEERING, SURVEYING, & PLANNING<br>316-262-7271 • 315 ELLIS • WICHITA, KANSAS 67211 |                           |

SHEET  
74  
OF  
143