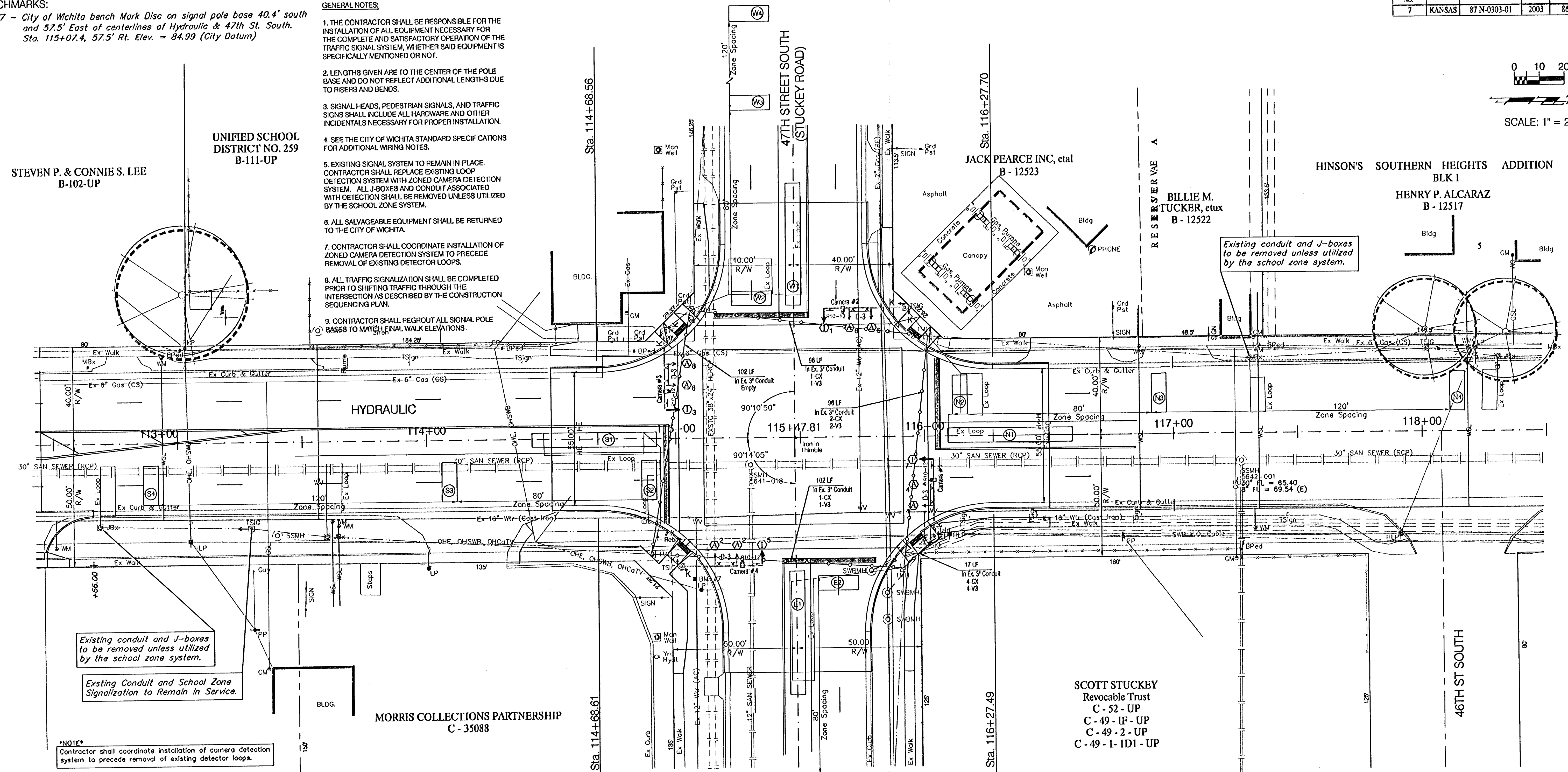
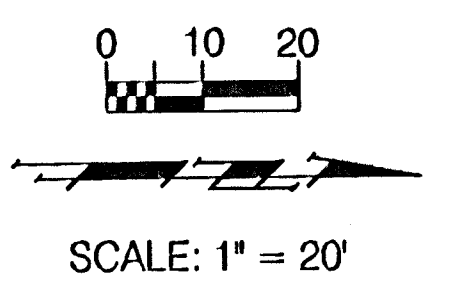


BENCHMARKS:
 BM #7 - City of Wichita bench Mark Disc on signal pole base 40.4' south and 57.5' East of centerlines of Hydraulic & 47th St. South.
 Sta. 115+07.4, 57.5' Rt. Elev. = 84.99 (City Datum)

- GENERAL NOTES:**
1. THE CONTRACTOR SHALL BE RESPONSIBLE FOR THE INSTALLATION OF ALL EQUIPMENT NECESSARY FOR THE COMPLETE AND SATISFACTORY OPERATION OF THE TRAFFIC SIGNAL SYSTEM, WHETHER SAID EQUIPMENT IS SPECIFICALLY MENTIONED OR NOT.
 2. LENGTHS GIVEN ARE TO THE CENTER OF THE POLE BASE AND DO NOT REFLECT ADDITIONAL LENGTHS DUE TO RISERS AND BENDS.
 3. SIGNAL HEADS, PEDESTRIAN SIGNALS, AND TRAFFIC SIGNS SHALL INCLUDE ALL HARDWARE AND OTHER INCIDENTALS NECESSARY FOR PROPER INSTALLATION.
 4. SEE THE CITY OF WICHITA STANDARD SPECIFICATIONS FOR ADDITIONAL WIRING NOTES.
 5. EXISTING SIGNAL SYSTEM TO REMAIN IN PLACE. CONTRACTOR SHALL REPLACE EXISTING LOOP DETECTION SYSTEM WITH ZONED CAMERA DETECTION SYSTEM. ALL J-BOXES AND CONDUIT ASSOCIATED WITH DETECTION SHALL BE REMOVED UNLESS UTILIZED BY THE SCHOOL ZONE SYSTEM.
 6. ALL SALVAGEABLE EQUIPMENT SHALL BE RETURNED TO THE CITY OF WICHITA.
 7. CONTRACTOR SHALL COORDINATE INSTALLATION OF ZONED CAMERA DETECTION SYSTEM TO PRECEDE REMOVAL OF EXISTING DETECTOR LOOPS.
 8. ALL TRAFFIC SIGNALIZATION SHALL BE COMPLETED PRIOR TO SHIFTING TRAFFIC THROUGH THE INTERSECTION AS DESCRIBED BY THE CONSTRUCTION SEQUENCING PLAN.
 9. CONTRACTOR SHALL REGROUT ALL SIGNAL POLE BASES TO MATCH FINAL WALK ELEVATIONS.



Existing conduit and J-boxes to be removed unless utilized by the school zone system.

Existing Conduit and School Zone Signalization to Remain in Service.

NOTE
Contractor shall coordinate installation of camera detection system to precede removal of existing detector loops.

NOTE
Contractor shall regROUT all signal pole bases

VEHICLE DETECTOR SUMMARY

LOOP NO.	LOOP SIZE W/L	DETECTOR SETTING	PHASE CALLED
E1	60' x 60'	PRESENCE	1
E2	18.0' x 6.0'	PRESENCE	6
E3	18.0' x 6.0'	PRESENCE	6
E4	18.0' x 6.0'	PULSE	6
S1	60' x 60'	PRESENCE	7
S2	18.0' x 6.0'	PULSE	4
S3	18.0' x 6.0'	PULSE	4
S4	18.0' x 6.0'	PULSE	4
W1	60' x 60'	PRESENCE	5
W2	18.0' x 6.0'	PULSE	2
W3	18.0' x 6.0'	PULSE	2
W4	18.0' x 6.0'	PULSE	2
N1	60' x 60'	PRESENCE	3
N2	18.0' x 6.0'	PULSE	8
N3	18.0' x 6.0'	PULSE	8
N4	18.0' x 6.0'	PULSE	8

TYPE 170 CONTROLLER SETTINGS

Interval	W/PHASE PROGRAM								Time Clock	Nominal Display									
	1	2	3	4	5	6	7	8		1	2	3	4	5	6	7	8		
Max. 0	30	80	30	80	30	80	30	80	0	Year	Veh Recall	1	2	3	4	5	6	7	8
Max. 2	1	30	80	30	80	30	80	30	1	Month	Pod Recall	X	X	X	X	X	X	X	X
Walk	2	6	8	6	8	6	8	2	2	Day/Month	Red Lock	X	X	X	X	X	X	X	X
Fl. Dv.	3	5	25	5	25	5	25	3	3	Day/Week	Yel Lock	X	X	X	X	X	X	X	X
Max. Init.	4	1	10	1	10	1	10	4	4	Hour	0 Permit	X	X	X	X	X	X	X	X
Min. Green	5	1	8	1	8	1	8	5	5	Minute	Pod Phases	X	X	X	X	X	X	X	X
TBR	6	15	15	15	15	15	15	6	6	Second	Lead Phases	X	X	X	X	X	X	X	X
TTR	7	25	25	25	25	25	25	7	7	Sequential	Dist Entry	X	X	X	X	X	X	X	X
Passage	9	1.0	2.0	1.0	2.0	1.0	2.0	9	8	Start Up Yel	Start Up Yel	X	X	X	X	X	X	X	X
Min. Gap	9	1.0	1.0	1.0	1.0	1.0	1.0	9	9	Overlap A	Overlap A	X	X	X	X	X	X	X	X
Add Act	b	1.0	1.3	1.0	1.3	1.0	1.3	b	10	Overlap B	Overlap B	X	X	X	X	X	X	X	X
Yellow	c	3.0	4.0	3.0	4.0	3.0	4.0	c	11	Overlap C	Overlap C	X	X	X	X	X	X	X	X
Red Clr	d	1.0	2.0	1.0	2.0	1.0	2.0	d	12	Overlap D	Overlap D	X	X	X	X	X	X	X	X
Red Rev	e	0.0	0.0	0.0	0.0	0.0	0.0	e	13	Exclusive	Exclusive	X	X	X	X	X	X	X	X
Walk II	f	0	0	0	0	0	0	f	14	Sim Gap	Sim Gap	X	X	X	X	X	X	X	X

CHART 'D' - STREET NAME SIGN SUMMARY

LEGEND	TYPE	QTY	UNITS	SIZE
Hydraulic	D-3	2	EA	30" X 60"
47th Street	D-3	2	EA	30" X 60"

CHART 'A' - SIGNAL INVENTORY

NO. WAYS	NO. SECTIONS (Per Face)	SIGNAL FACE ARRANGEMENT	MOUNTING TYPE	QTY
1	5	I	TYPE I	4
1	3	A	TYPE I	0
2	2	K (SMB)	TYPE II	4

BILL OF MATERIALS

ITEM	UNIT	QTY
BACK PLATE 5" - 5 SECTION	EACH	4
TRAFFIC SIGNAL LAMP RED LED KIT	EACH	4
TRAFFIC SIGNAL LAMP YELLOW LED KIT	EACH	4
TRAFFIC SIGNAL LAMP GREEN LED KIT	EACH	4
TRAFFIC SIGNAL LAMP GREEN ARROW LED KIT	EACH	4
TRAFFIC SIGNAL LAMP YELLOW ARROW LED KIT	EACH	4
PEDESTRIAN SIGNAL HEAD WITH BRACKETS	EACH	8
12" COMBINATION	EACH	8
PEDESTRIAN PUSH BUTTON WITH SIGN (ONE PC)	EACH	8
MULTI-CONDUCTOR CABLE No. 18 A.W.G. 3/C (V3)	LIN. FT.	458
VIDEO CABLE 75 OHM COAXIAL (BELDON 8281) (CX)	LIN. FT.	458
CAMERA HOUSING	EACH	4
VIDEO DETECTION CAMERA & MOUNTING HARDWARE (RISER BRACKET)	EACH	4
VIDEO DETECTION PROCESSOR UNIT	EACH	4
VIDEO MONITOR	EACH	1
CAMERA CHARGING COUPLING DEVICE	EACH	4
REMOVAL OF EXISTING TRAFFIC SIGNAL EQUIPMENT **	L.S.	-
STREET NAME SIGNS W/MOUNTING HARDWARE (D-3)	EACH	4

