

FHWA REGION NO.	STATE	PROJECT NO.	FISCAL YEAR	SHEET NO.	TOTAL SHEETS
7	KANSAS	87 N-0303-01	2003	87	143

CHART A SIGNAL INVENTORY

NO. WAYS	NO. SECTIONS (Per Face)	SIGNAL FACE ARRANGEMENT	MOUNTING TYPE	QUANTITY
1	3	A	RIGID MAST ARM	4
1	2	L	VERTICAL BRACKET	2
1	3	A	VERTICAL BRACKET	2
1	3	H	VERTICAL BRACKET	2

CHART B TRAFFIC SIGNAL POLES

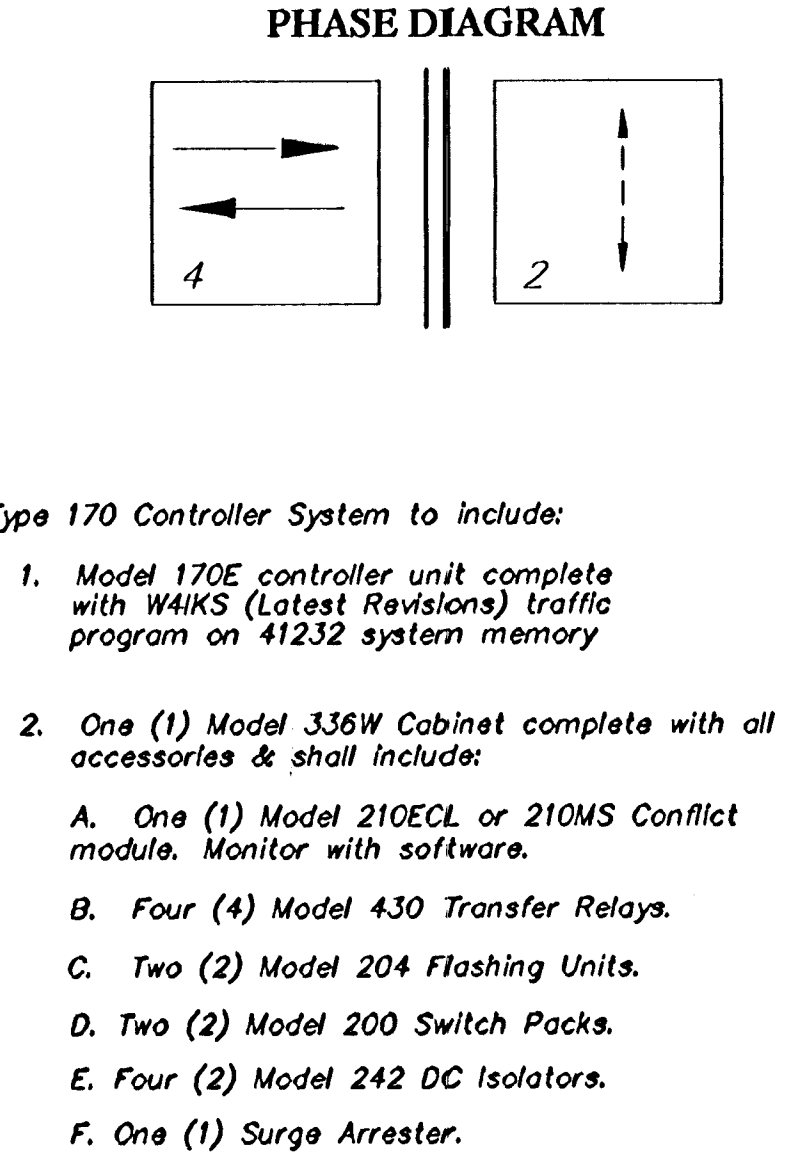
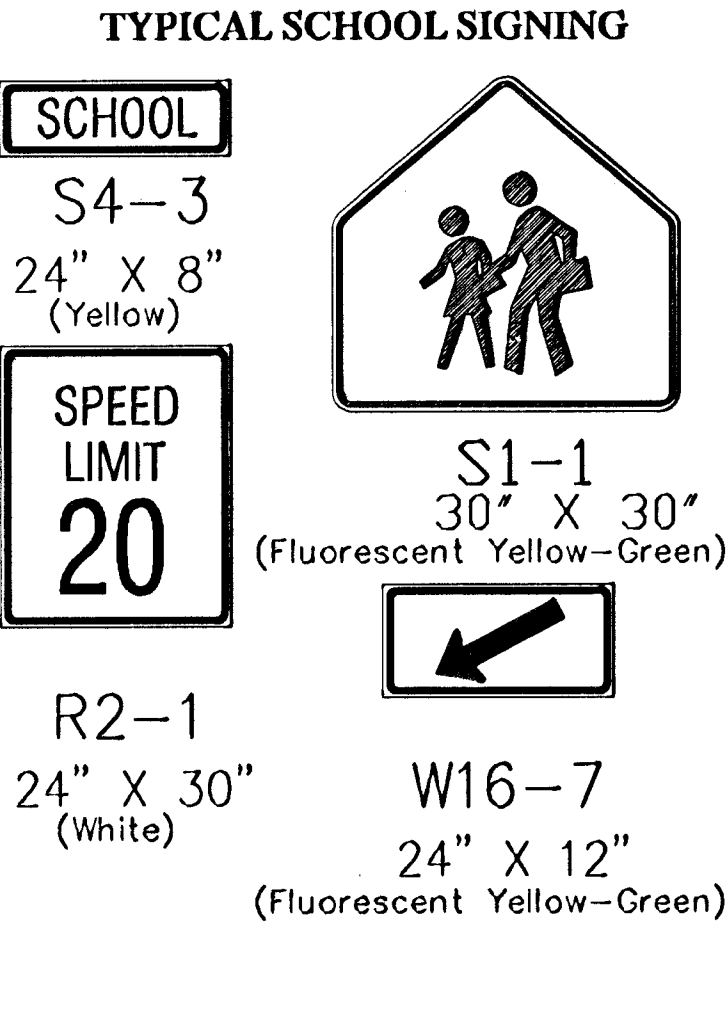
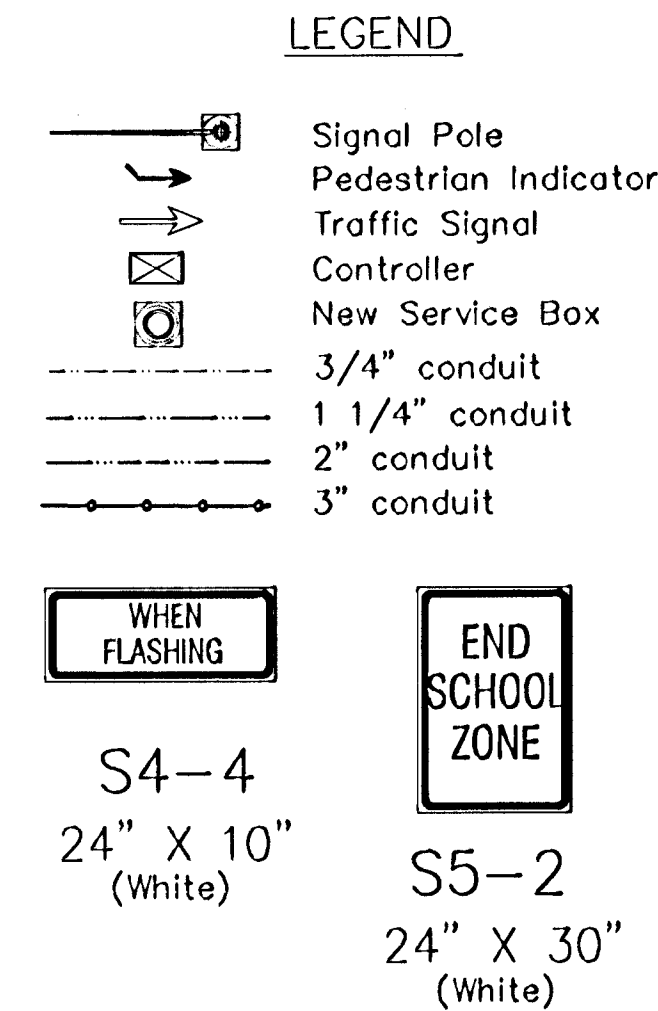
STATION, DIST. - SIDE	ARM SIZE	HEIGHT	NO. OF SIGNALS ON ARM	SIGNAL SPACING	TYPE
90+41.50, 34.50 Rt	30"	15'	1	11'	PEDESTAL
91+82.50, 40.00 Lt	30"	35'	2	11'	
91+91.50, 38.00 Rt	30"	35'	2	11'	
93+32.50, 40.00 Lt	15"	15'	1		PEDESTAL

CHART C

CONDUIT SIZE	TRENCHED	PUSHED
1 1/4"	290'	
3"	35'	80'

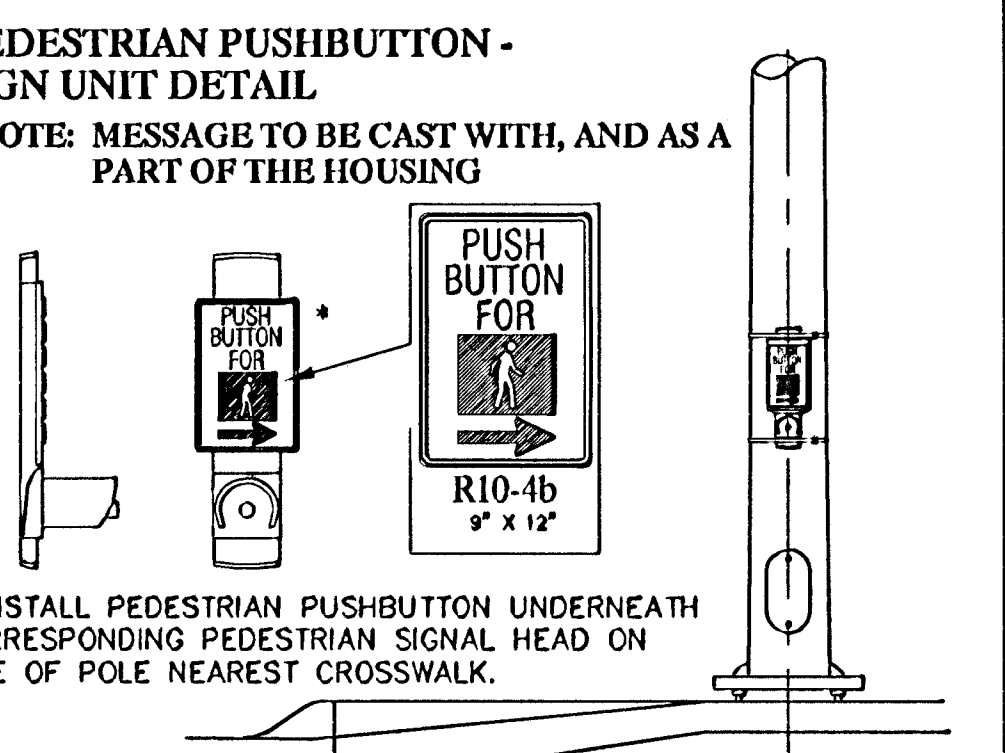
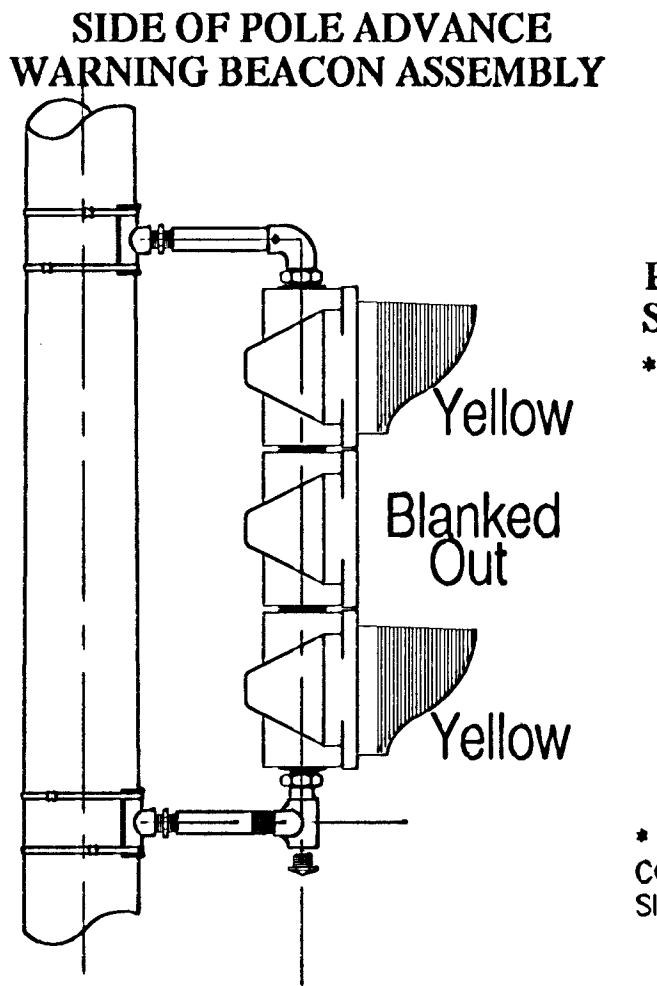
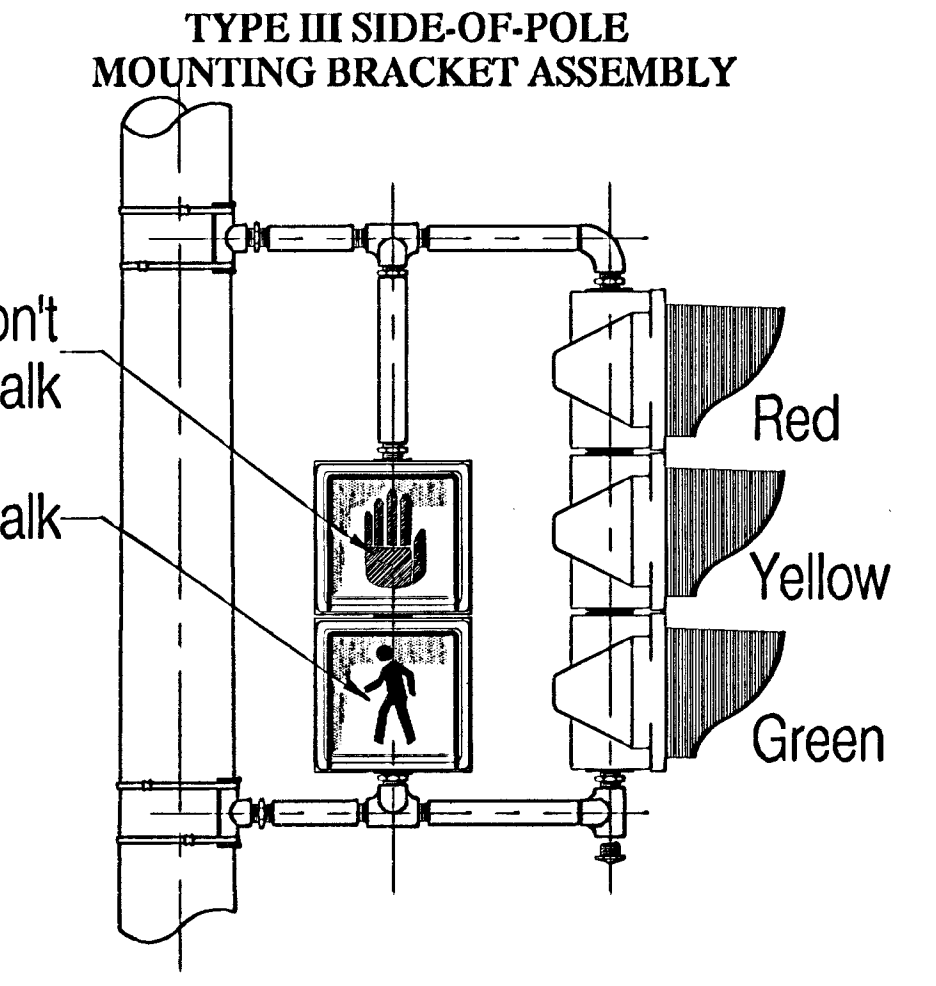
SERVICE BOX SUMMARY

STATION	DIST. - SIDE
91+91.50	38' Rt



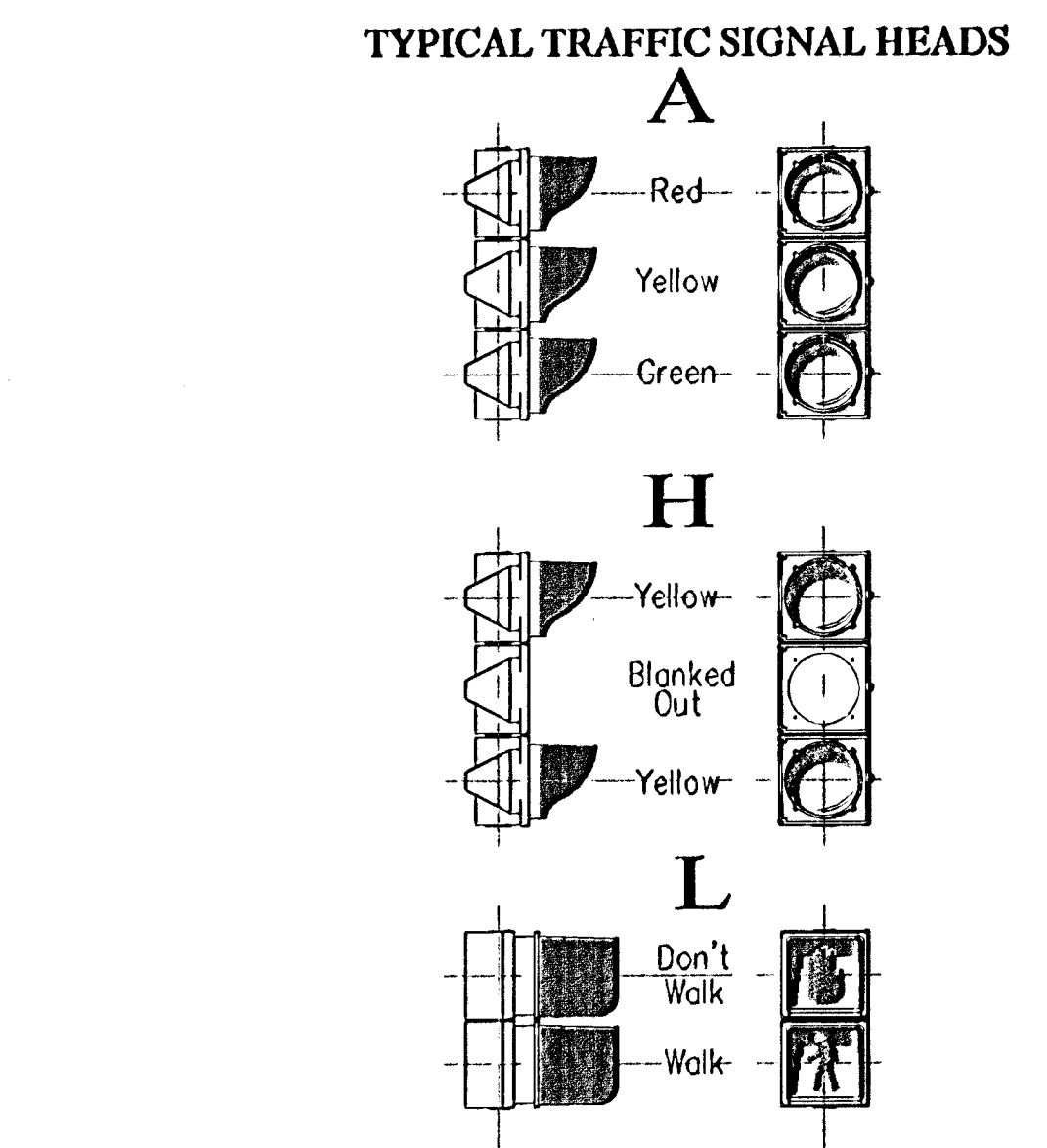
BILL OF MATERIALS

ITEM	UNIT	QUANTITY
POLE MOUNTED CNTRLR. & CABINET W/ 170 CNTRLR. TRAFFIC SIGNAL HEAD (SEE CHART A) W/ MOUNTING HARDWARE (12")	EACH	1
TRAFFIC SIGNAL POLE (SEE CHART B) STEEL	EACH	10
ASSEMBLY 'B' BRACKET (SIDE OF POLE)	EACH	4
ASSEMBLY 'H' BRACKET (SIDE OF POLE)	EACH	4
CONCRETE FOOTING - POLE	EACH	2
CONDUIT ELBOW 90°	EACH	As Req'd.
PEDESTAL POLE	EACH	2
CONCRETE FOOTING - PEDESTAL	EACH	2
SERVICE BOX	EACH	2
GROUND ROD & CLAMP	EACH	5
CONDUIT CLAMP	EACH	As Req'd.
TRAFFIC SIGNAL LAMP (LED)	EACH	22
ENTRANCE HEAD	EACH	1
CIRCUIT BREAKER & BOX	EACH	1
PEDESTRIAN SIGNAL HEAD (12" COMBINATION) (LED)	EACH	2
PEDESTRIAN PUSHBUTTON W/SIGN	EACH	2
LEAD-IN WIRE No. 6 A.W.G. 1/C (TYPE THHN)	feet	35.5
MULTI-CONDUCTOR CABLE No. 14 A.W.G. 5/C	feet	372
MULTI-CONDUCTOR CABLE No. 14 A.W.G. 7/C	feet	100
CONDUIT 1 1/4"	SEE CHART C	feet 290
CONDUIT 3"	SEE CHART C	feet 35
STANDARD 1C #8 (GROUND)	SEE CHART C	feet 408
REMOVAL OF EXISTING TRAFFIC SIGNAL EQUIPMENT **	L.S.	1 **

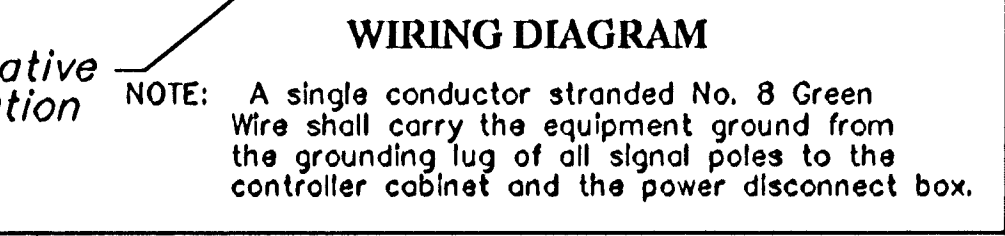
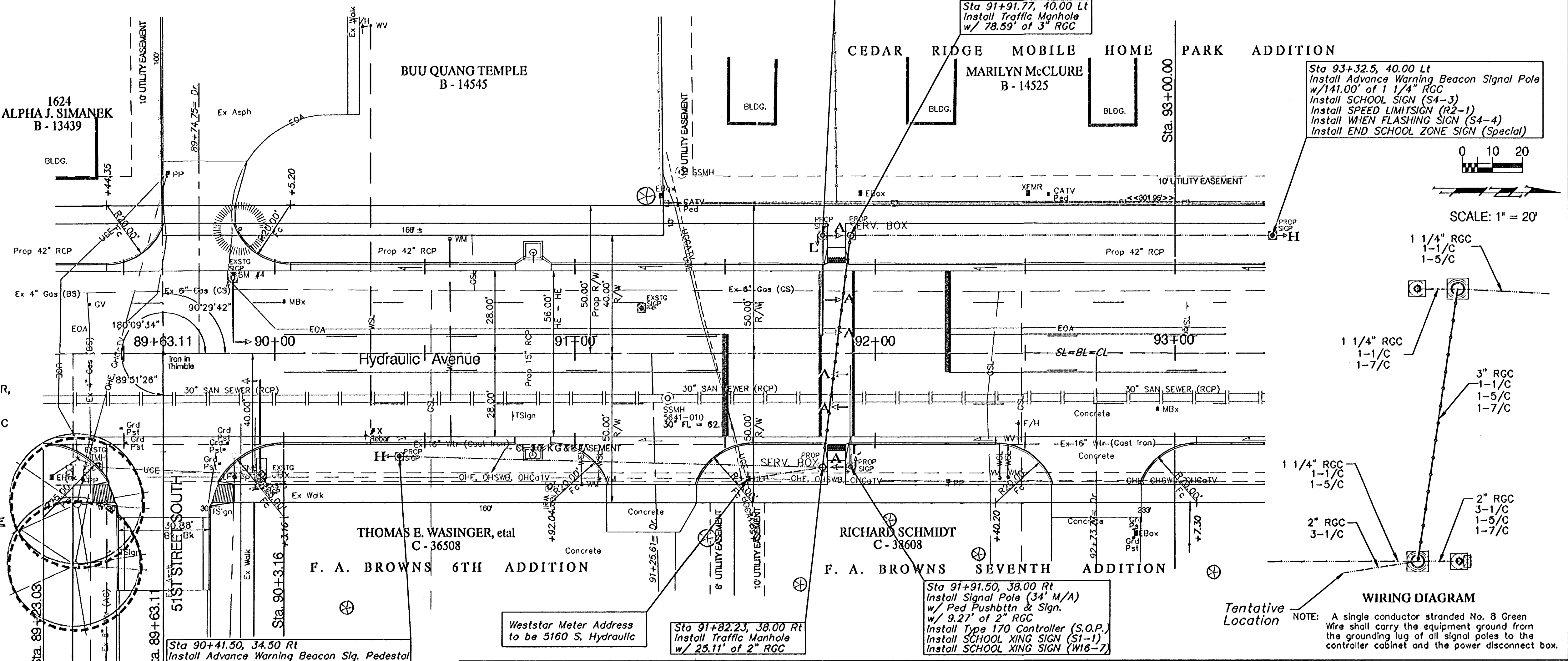


RECAPITULATION OF TRAFFIC SIGNAL INSTALLATION

BID ITEM	QUANTITY	UNIT
CROSSWALK SIGNAL INSTALLATION (HYDRAULIC & 51ST ST. SOUTH)	1 (LUMP SUM)	L.S.



- ### GENERAL NOTES
- SIGNAL TIMING BY THE CITY OF WICHITA. THE CONTRACTOR SHALL BE RESPONSIBLE FOR FURNISHING AND INSTALLING THE CONTROLLER, CABINET, CONCRETE BASE, AND FOR ALL EQUIPMENT NECESSARY FOR THE COMPLETE AND SATISFACTORY OPERATION OF THE TRAFFIC SIGNAL, WHETHER SAID EQUIPMENT IS SPECIFICALLY MENTIONED OR NOT.
 - LENGTHS GIVEN ARE TO CENTERLINE OF POLE/BOX AND DO NOT INCLUDE LENGTHS FOR ELBOWS AND RISERS.
 - SIGNAL HEADS, PEDESTRIAN SIGNALS, TRAFFIC SIGNS & ETC. INCLUDE ALL BRACKETS, HARDWARE & OTHER INCIDENTALS NECESSARY FOR INSTALLATION.
 - SEE CITY OF WICHITA STANDARD SPECIFICATIONS FOR ADDITIONAL WIRING NOTES.
 - ALL SIGNS HAVE MICRO-PRISMATIC SHEETING.
 - SCHOOL CROSSWALK SHALL BE MAINTAINED AT ALL TIMES DURING CONSTRUCTION.



PROJECT NUMBER 472-83902	SHEET NAME xvllksg	ENGINEERING DIRECTORY E:\Eng\Hydraulic_phs2\Traffic	STREET & SWS IMPROVEMENTS CROSSWALK SIGNALIZATION between 50th Street South and 51st Street South HYDRAULIC AVE PAVING - SOUTH OF 57th STREET SOUTH TO 47th STREET SOUTH	BAUGHMAN COMPANY, P.A. ENGINEERING, SURVEYING, & PLANNING 318-282-7271 • 315 ELLIS • WICHITA, KANSAS 67211	SHEET 87 OF 143
DESIGN JFB	DRAWN TCA	APPROVED JFB/KK	DATE March 04		SCALE 1"=20'