

GENERAL NOTES

1. UNLESS SHOWN OR STATED OTHERWISE ON THESE DRAWINGS, MATERIALS AND CONSTRUCTION SHALL BE IN ACCORDANCE WITH CITY OF WICHITA CONCRETE PAVEMENT AND ASPHALTIC CONCRETE PAVEMENT SPECIFICATIONS.

2. THE CONTRACTOR SHALL BE RESPONSIBLE FOR PRESERVING PROPERTY IRONS. THE CONTRACTOR WILL BE REQUIRED TO RE-ESTABLISH ANY PROPERTY IRONS WHICH ARE DAMAGED OR DESTROYED BY HIS CONSTRUCTION OPERATIONS. SUCH IRONS SHALL BE RE-ESTABLISHED BY A LICENSED LAND SURVEYOR IN ACCORDANCE WITH STATE LAWS.

3. EXISTING UTILITIES AND THEIR LOCATIONS, AS SHOWN ON THE PLANS REPRESENT THE BEST INFORMATION OBTAINABLE FOR DESIGN. LOCATION INFORMATION HAS BEEN OBTAINED FROM THE VARIOUS UTILITY COMPANIES AND IS EITHER FROM COMPANY RECORD DRAWINGS OR COMPANY PROVIDED FIELD LOCATIONS. THE PLAN LOCATIONS SHOWN ARE NOT GUARANTEED. ADDITIONAL EXISTING UTILITIES MAY ALSO BE ENCOUNTERED.

4. CONTRACTOR WILL BE REQUIRED TO PROVIDE A MINIMUM ADVANCE NOTICE OF FORTY-EIGHT (48) HOURS TO UTILITY COMPANIES PRIOR TO STARTING ANY EXCAVATION AS FOLLOWS:

KANSAS ONE-CALL 1-800-344-7233
OR 687-2470 (LOCAL WICHITA)

THE CONTRACTOR MUST NOTIFY THE FOLLOWING IN CASE OF AN EMERGENCY:

COX COMMUNICATION 263-0661
WESTAR ENERGY 261-8512
SBC 1-800-870-8390
CITY OF WICHITA WATER & SEWER 262-6000
COOPERATIVE REFINERY PIPELINE 1-800-982-4112
KANSAS GAS SERVICE 832-3101

5. RUBBLE FROM THE REMOVAL OF MISCELLANEOUS STRUCTURES AND EXCESS EXCAVATION WHICH IS TO BE WASTED SHALL BE DISPOSED OF ON SITES TO BE PROVIDED BY THE CONTRACTOR. THESE SITES SHALL BE APPROVED BY THE ENGINEER AS TO SUITABILITY, APPEARANCE AND SITE LOCATION. LOCATIONS THAT, IN THE OPINION OF THE ENGINEER, WILL LEAVE AN UNSIGHTLY APPEARANCE WILL NOT BE APPROVED. ALL DISPOSAL SITES MUST BE APPROVED BY THE KANSAS DEPARTMENT OF HEALTH AND ENVIRONMENT. MATERIAL EITHER STOCKPILED OR DISPOSED OF IN A FLOOD PLAIN WOULD REQUIRE A KANSAS STATE BOARD OF AGRICULTURE PERMIT. ANY MATERIAL DUMPED IN WATERS OF THE UNITED STATES OR WETLANDS IS SUBJECT TO U.S. CORPS OF ENGINEERS PERMITTING REGULATIONS. ANY MATERIAL BURIED OR STOCKPILED BEYOND APPROVED CONSTRUCTION LIMITS WOULD REQUIRE ADDITIONAL ARCHAEOLOGICAL INVESTIGATIONS UNLESS BURIED IN A PREVIOUSLY APPROVED BORROW LOCATION.

6. A SAW CUT OF AT LEAST ONE-HALF THE DEPTH OF THE EXISTING SURFACE COURSES OR ONE-FOURTH THE DEPTH OF THE EXISTING TOTAL PAVEMENT THICKNESS SHALL BE PROVIDED AT LOCATIONS WHERE PROPOSED CONSTRUCTION ADJUTS AN EXISTING SURFACE OR PAVEMENT FOR WHICH PARTIAL REMOVAL OF THAT SURFACE OR PAVEMENT IS REQUIRED. SAW JOINT TO FACILITATE REMOVAL WITHIN THREE (3) FEET OF EXISTING JOINTS WILL NOT BE PERMITTED AND FOR SUCH INSTANCES THE LIMITS OF REMOVAL SHALL EXTEND TO THE EXISTING JOINT. SUCH SAW CUTS WILL NOT BE PAID FOR DIRECTLY AND THIS COST SHALL BE CONSIDERED AS SUBSIDIARY TO THE REMOVAL OF SURFACE OR PAVEMENT.

7. CONTRACTOR SHALL SEED ALL DISTURBED AREAS WITH AN ANNUAL RYE GRASS AT A RATE OF 250LBS./ACRE.

8. THE CONTRACTOR SHALL COORDINATE WITH THE DEVELOPER AND ENGINEER ON THE REMOVAL OF TREES OUTSIDE OF BACK OF CURB. NO TREES SHALL BE REMOVED PRIOR TO A MEETING ON SITE WITH THE CITY, DEVELOPER AND ENGINEER.

9. EQUIPMENT AND CONSTRUCTION MATERIALS SHALL REMAIN OUT OF AND AWAY FROM TREE DRIPLENS SO AS TO NOT COMPACT THE ROOT ZONE OR DAMAGE THE TREE.

10. ANY TREE THAT MUST HAVE BRANCHES REMOVED SHALL BE TRIMMED WITH SHARP INSTRUMENT/TOOL THAT IS INTENDED FOR SUCH OPERATIONS. KNOCKING BRANCHES OFF WITH A BACKHOE OR OTHER SIMILAR MACHINES IS NOT ACCEPTABLE! REFER TO DETAIL, SHEET 9 FOR TRIMMING PROCEDURE.

11. OTHER CONSTRUCTION MAY BE UNDER WAY SIMULTANEOUSLY WITH THIS PROJECT. THE CONTRACTOR SHALL COORDINATE WITH ANY CONTRACTORS CONSTRUCTING OTHER PHASES. EARTHWORK FOR THE GLEN WOOD COURTS IS COMPLETE. RCB & EARTHWORK FOR GLEN WOOD ST. SHOULD BE COMPLETED BY JULY 31.

12. ALL TOPSOIL SHALL BE STRIPPED IN AREAS OF CUT/FILL AND STOCKPILED

13. A 6" LAYER OF TOPSOIL IS TO BE PLACED OVER ALL AREAS WHERE THE VIRGIN GRADE NO LONGER EXISTS WITH THE EXCEPTION OF PAVED AREAS. THIS INCLUDES BERMS, SWALES AND SLOPES. NOTE: THE FINISHED GRADE INDICATES THE SURFACE ELEVATION AFTER THE 6" LAYER OF TOPSOIL HAS BEEN PLACED.

14. TRANSITION CURB FROM FULL HEIGHT COMBINATION CURB AND GUTTER TO ROLL CURB AND GUTTER SHALL BE PAID FOR AS LINEAL FEET STANDARD CURB AND GUTTER (3 5/8" RL & 1 1/2")

15. MKEC WILL PROVIDE AS-BUILT DRAWINGS OF THE SITE GRADING PROJECT PRIOR TO BEGINNING CONSTRUCTION OF THIS PROJECT.

LENGTH OF PROJECT
29' BK.-BK. 2064 FT.

SW. Cor., NW ¼, Sec. 11,
T27S, R2E, 6th P.M.,
6th P.M., Fnd. ¾"
Pipe in Thimble
N1697211.0539
E1691552.4949

PAVING PLANS FOR PHASE 1

REED'S COVE ADDITION

AN ADDITION TO THE CITY OF WICHITA
SEDGWICK COUNTY, KANSAS

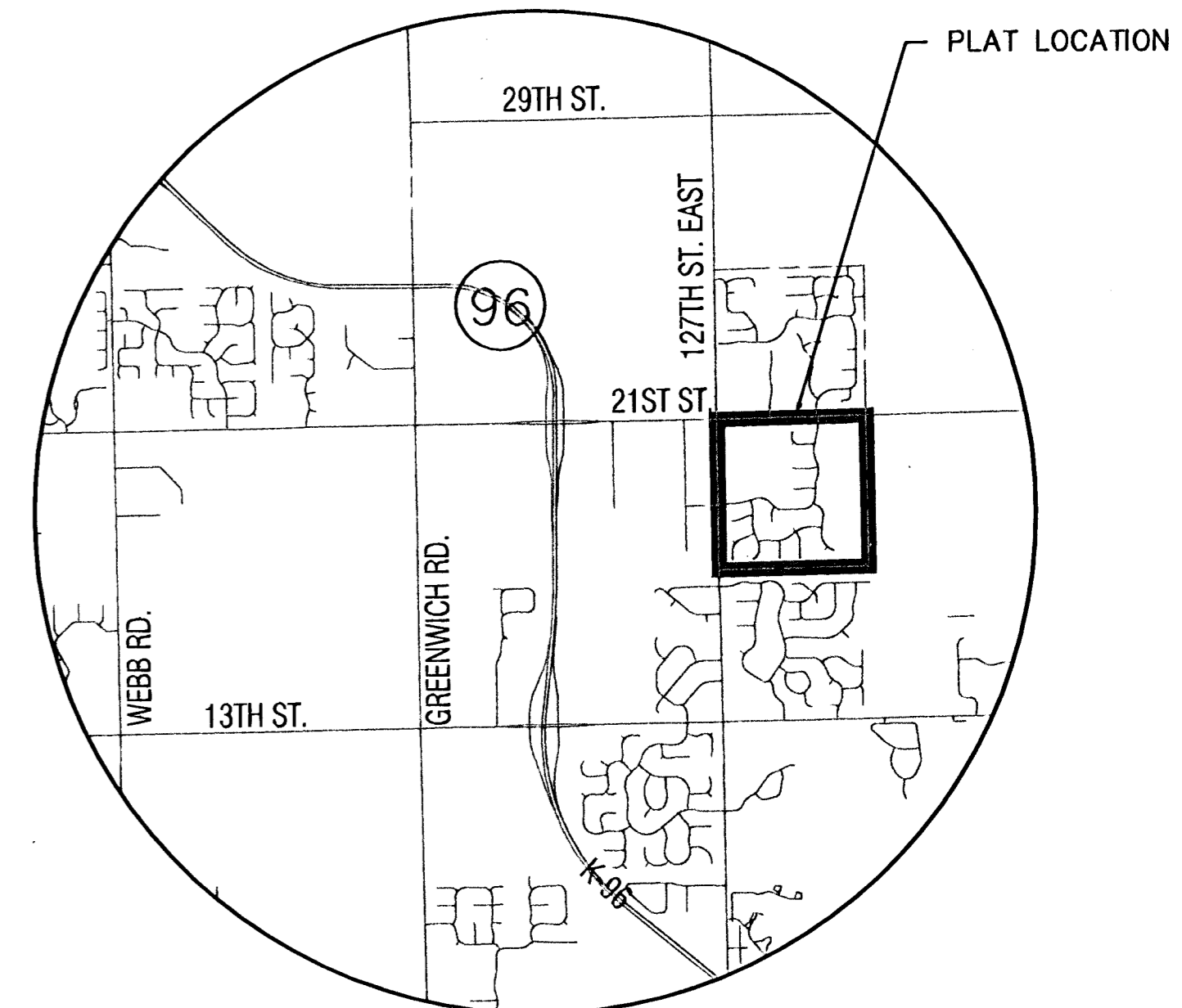
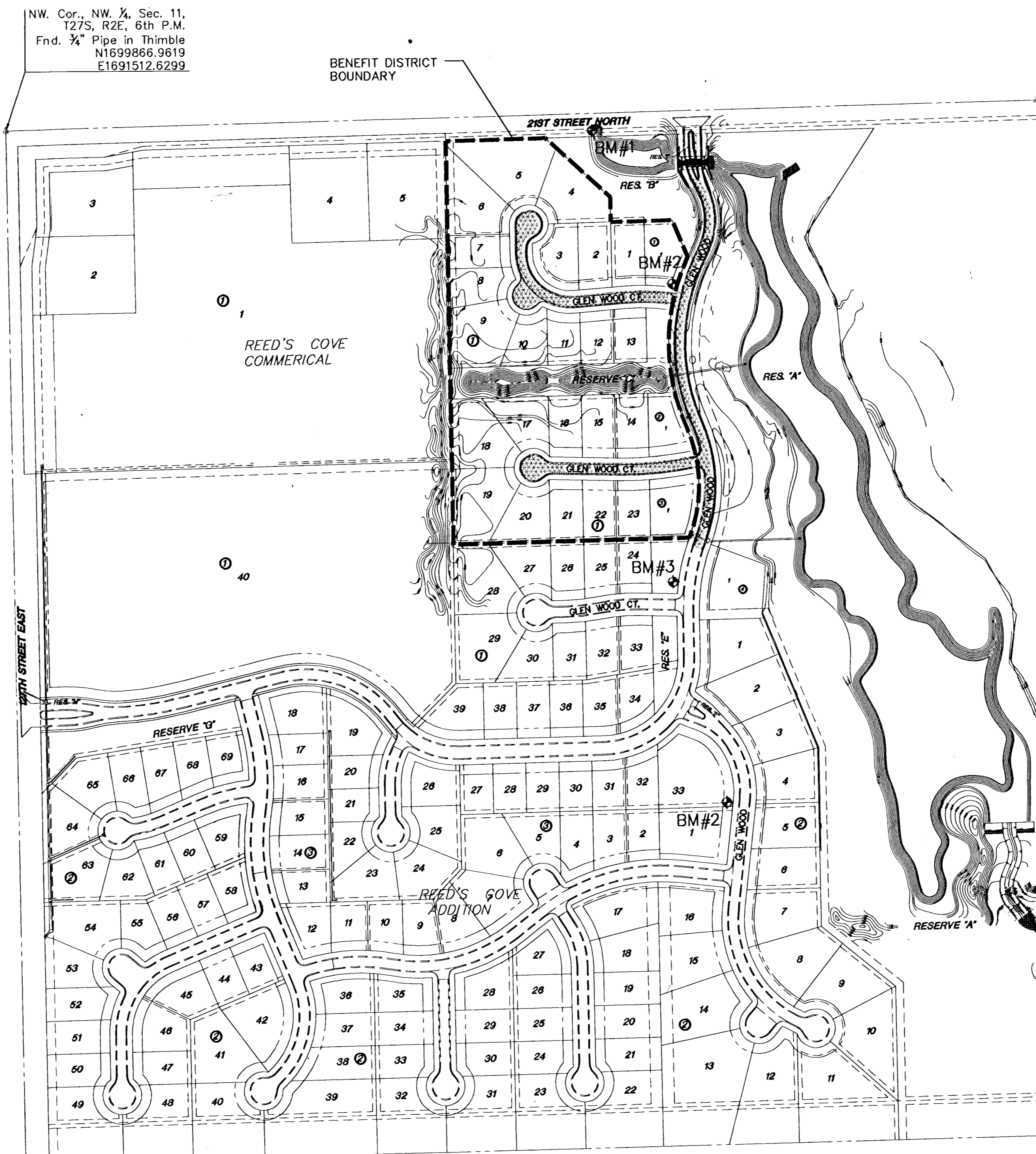
PROJECT NO. 472-83680

NEIL D. CABLE, CITY ENGINEER

INDEX CODE 765778

NW. Cor., NW ¼, Sec. 11,
T27S, R2E, 6th P.M.
Fnd. ¾" Pipe in Thimble
N1699866.9619
E1691512.6299

NE. Cor., NW ¼, Sec. 11,
T27S, R2E, 6th P.M.
Fnd. ¾" Pipe
N1699933.6799
E1694161.6279



VICINITY MAP

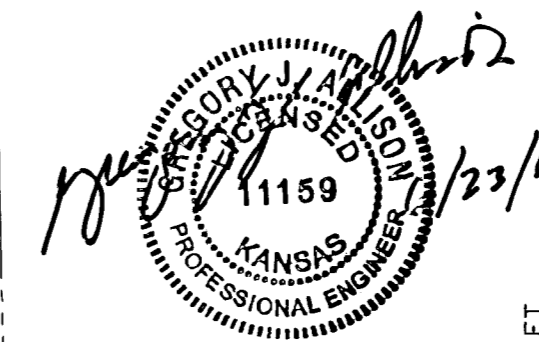
INDEX TO DRAWINGS

SHEET NO.	DESCRIPTION
1	TITLE SHEET
2-4	TYP. PAVING SECTIONS
5	BRICK PAVER DETAILS
6	SIGNING DETAILS
7-10	PAVING PLANS
11-12	SIDEWALK PLAN
13-16	BMP
17-32	PAVING CROSS SECTIONS
33-34	FINAL PLAT

BENCHMARK

- BM 1 SQUARE CUT W. END OF S. HEADWALL OF RCB UNDER 21ST ST. N., 1506' +/- E. & 25' +/- S. OF NW COR SEC 11, T 27 S, R 2 E. ELEV.=1351.77
- BM 2 "I" POST 10' +/- N. & 10' +/- W. OF SE COR RES. "B" REED'S COVE. ELEV.=1351.79
- BM 3 "I" POST 30' +/- N. & 10' +/- W. OF SE COR RES. "D" REED'S COVE). ELEV.=1362.66

SCALE: 1" = 200'



SE. Cor., NW ¼, Sec. 11,
T27S, R2E, 6th P.M.
Fnd. Stone
N1697273.5409
E1694206.3599

H:\CIVIL\02121\DWG\PAV\PH1\02121E1



REED'S COVE ADDITION
PROJECT NAME

PAVING PLANS - PHASE 1
SHEET TITLE

DFL DESIGN BY:	DMU DRAWN BY:	GJA CHECKED BY:
JUNE 2003 DATE	02121_ET JOB NO.	1 / 34 SHEET / OF