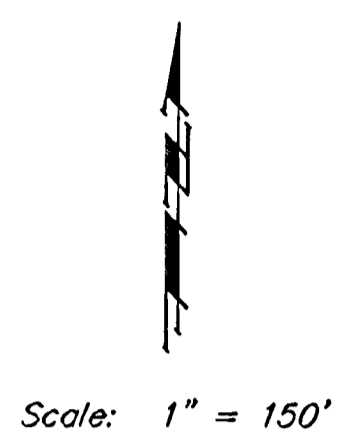
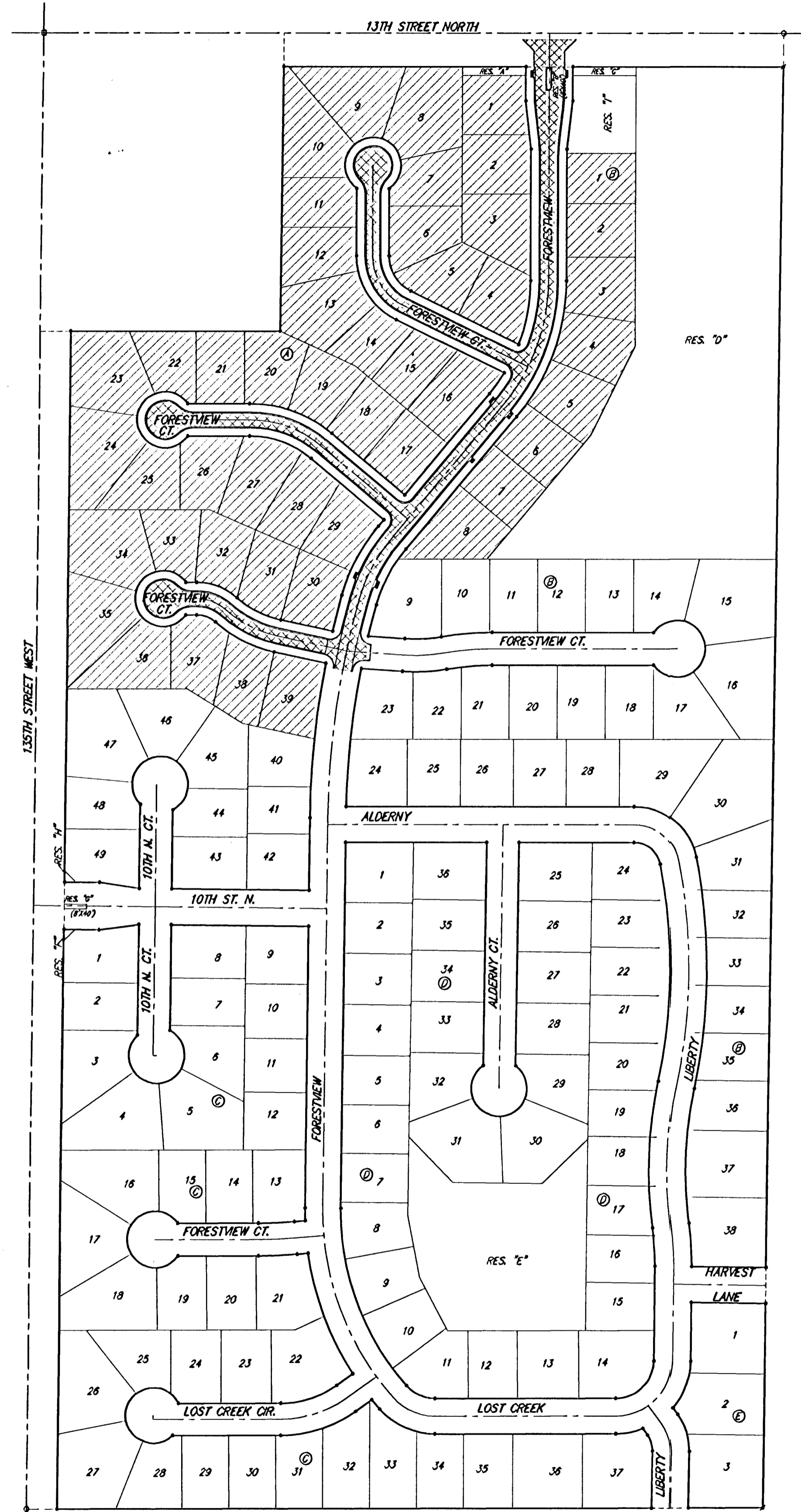


STREET IMPROVEMENTS  
to serve

LIBERTY PARK 2ND ADDITION - PHASE I

Forestview, from the north line of the plat.  
south to the north line of Lot 39, Block A,  
Forestview Ct. (Lots 4-16, Block A), from the west line of Forestview,  
west to and including the cul-de-sac.  
Forestview Ct. (Lots 17-29, Block A), from the west line of Forestview,  
west to and including the cul-de-sac.  
Forestview Ct. (Lots 30-39, Block A), from the west line of Forestview,  
west to and including the cul-de-sac.



GENERAL NOTES:

- Contractor will be required to provide notice to utility companies a minimum of twenty-four (24) hours prior to any excavation, as follows:  
Kansas One-Call 687-2470  
The Contractor must notify the following in case of an emergency:  
Cox Communications 262-4270  
Kansas Gas Service 1-888-482-4950  
Westar Energy 383-8650  
Aquila Energy 1-888-492-4950  
SBC Communication 268-2245  
City of Wichita Water Dept. 268-4563  
City of Wichita Sewer Maint. 268-4024  
City of Wichita Storm Sewer Maint. 268-4030  
City of Wichita Traffic Maint. 268-4034
- Utility service lines, poles, valve boxes, meters, and etcetera are to be adjusted as necessary by others prior to construction unless the plans specifically call for their adjustment by the Contractor or unless the plans specifically identify a utility to be adjusted by its owner during construction. Existing utilities and their location, as shown on the plans, represent the best information obtainable for design. The contractor will be required to work around existing utilities within the right-of-way which do not conflict with proposed construction.
- Trees and shrubs in public right-of-way which are in direct conflict with proposed new construction shall be removed by the Contractor with the Engineer's approval. Trees and shrubs which are not in direct conflict with proposed new construction shall be saved and protected from damage.
- All areas disturbed by construction shall be seeded at 300 lbs./acre with Rye Grass immediately following construction in that area. Contractor shall prepare ground per City specifications.
- Rubble from the removal of miscellaneous structures and excess excavation which is to be wasted shall be disposed of on sites to be provided by the Contractor. These sites shall be approved by the Engineer as to suitability, appearance and site location. Locations that, in the opinion of the Engineer, will leave an unsightly appearance will not be approved. All disposal sites must be approved by the Kansas Department of Health and Environment. Material either stockpiled or disposed of in a flood plain would a Kansas State Board of Agriculture permit. Any material dumped in waters of the United States or wetlands is subject to U.S. Corps. of Engineers permitting regulations. Any material buried or stockpiled beyond approved construction limits would require additional archaeological investigations unless buried in a previously approved borrow location.
- The Contractor shall be responsible for preserving property irons. The Contractor will be required to re-establish any property irons which are damaged or destroyed by his construction operations. Such irons shall be re-established by a licensed land surveyor in accordance with state law.
- A saw cut of at least one-half the depth of existing surface courses of one-fourth the depth of the existing total pavement thickness shall be provided at locations where proposed construction abuts as existing surface course or pavement for which partial removal of that surface or pavement is required. Sawed joint to facilitate removal within three (3) feet of existing joints will not be permitted and for such instances the limits of removal shall extend to the existing joint. Such saw cuts will not be paid for directly and this cost shall be considered as subsidiary to the removal of the surface or pavement.

CITY OF WICHITA, KANSAS

Neil D. Cable, P.E. City Engineer

Project Number

472-83653

O.C.A. Number:

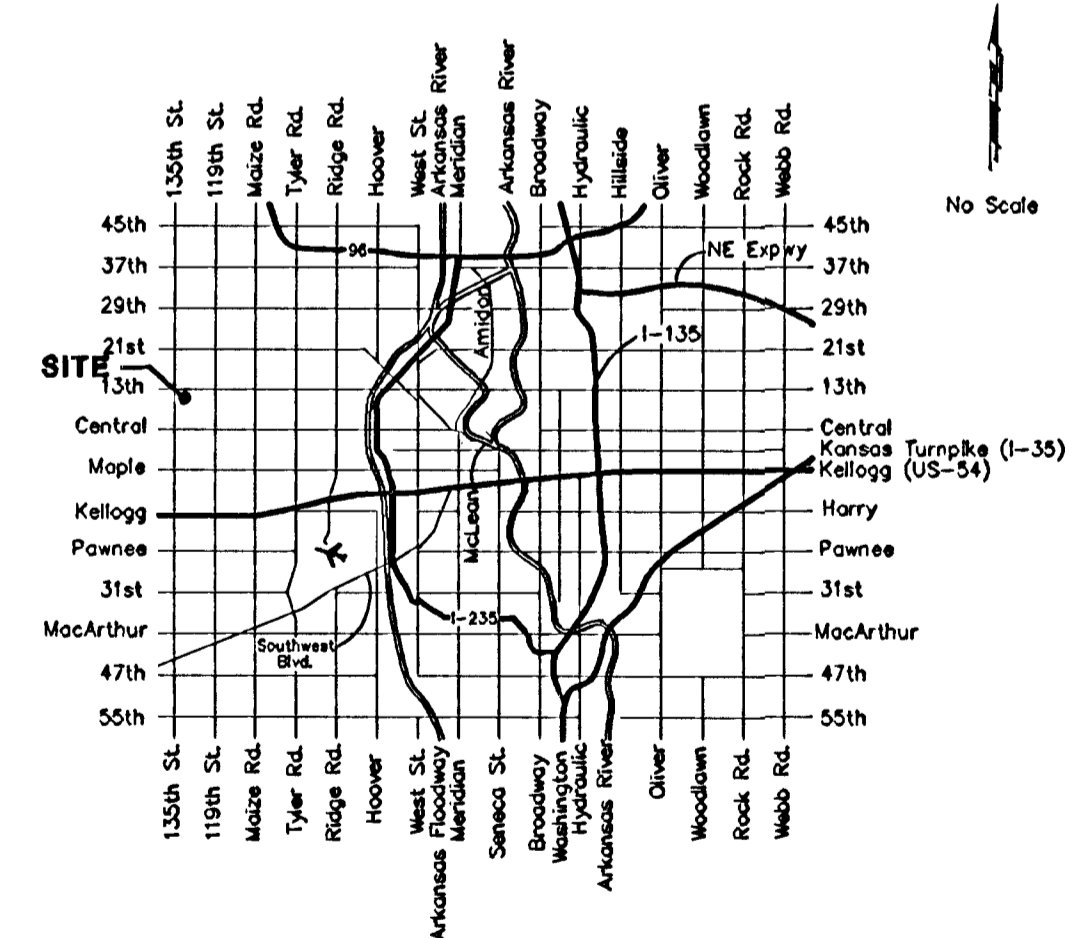
765768

Benchmarks

BM #1: C.O.W. benchmark disk.  
56' E and 55' N of CL 135th St.  
W. & 13th St. N.  
Elev. = 167.83 (City Datum)  
BM #2: 60D nail in HLP, 800' W  
& 31' N of the NE cor., NW1/4,  
Sec. 13, T-27-S, R-2-W.  
Elev. = 162.68 (City Datum)

Sheet Index

Title Sheet	1
35' Pavement Detail	2
29' Pavement Detail	3
Sign Detail	4
Miscellaneous Details	5
Entrance Details	6
Forestview	7-9
Forestview Ct. (Lots 5-18, Block A)	10-11
Forestview Ct. (Lots 19-32, Block A)	12-13
Forestview Ct. (Lots 33-43, Block A)	14
Soil Erosion BMPs	15-16
Earth Work Cross Sections	17-25
Erosion Control Plan	26
Copy of Plat	27



Vicinity Map

Project Earthwork Totals  
Excavation = 1,252 C.Y.  
Loose Fill = 950 C.Y.  
Compacted Fill = 101 C.Y.  
Borrow Excavation = 70 C.Y.  
Total Project Length  
2,610 L.F. = 0.49 Miles

Benefit District: [Hatched Box]  
Proposed Streets: [Cross-hatched Box]



As Built - 12/8/03 Kx. Per Plan