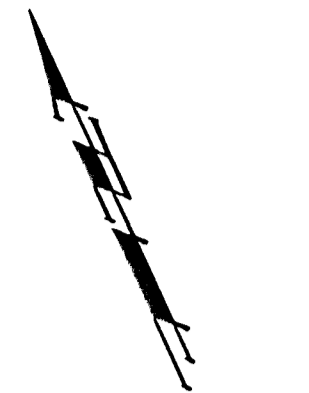
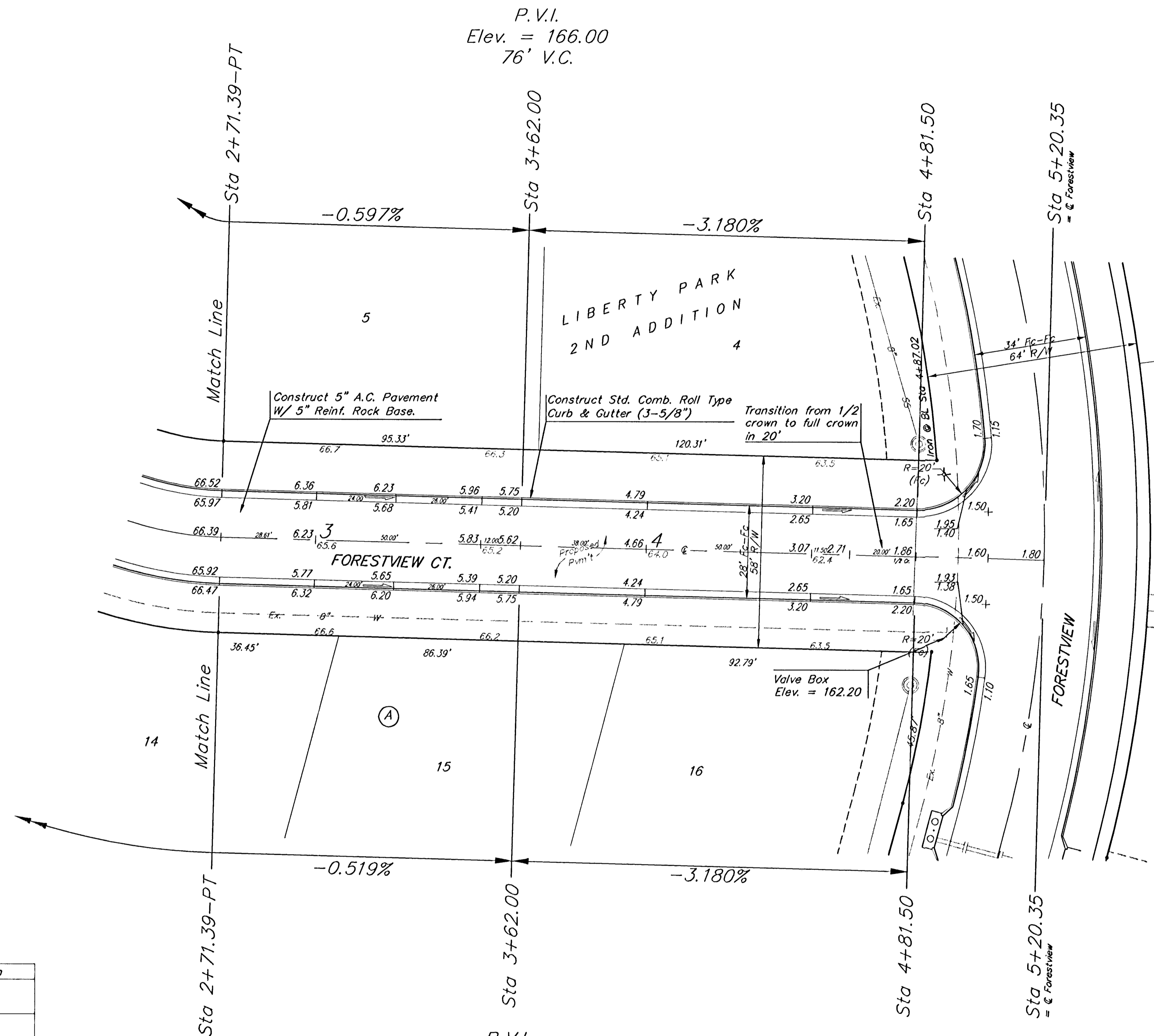


BENCHMARKS:
 BM #1: C.O.W. benchmark disk.
 56' E and 55' N of CL 135th
 St. W. & 13th St. N.
 Elev. = 167.83 (City Datum)

BM #2: 60D nail in HLP, 800'
 W & 31' N of the NE cor.,
 NW1/4, Sec. 13, T-27-S,
 R-2-W.
 Elev. = 162.68 (City Datum)



Scale: 1" = 20'
 • = Iron



P.V.I.
 Elev. = 166.00
 76' V.C.

P.V.I.
 Elev. = 166.00
 76' V.C.

Subdivision Bench Marks

| Street & Station | Location Description | Elevation |
|--|---|-----------|
| Forestview 5+29.60, 17.25' Lt. | Adjacent to Fire Hydrant at S. End of SW Curb Return of Forestview & Forestview Ct. (Lots 19-32, Block A) | |
| Forestview 12+09.35, 17.25' Lt. | Adjacent to Fire Hydrant adjacent to lot corner between Lots 2&3, Block A | |
| Forestview Ct. (Lots 5-18, Block A) 2+51.78, 14.25' Rt. | Adjacent to Fire Hydrant adjacent to lot corner between Lots 13&14, Block A | |
| Forestview Ct. (Lots 19-32, Block A) 2+32.86, 14.25' Lt. | Adjacent to Fire Hydrant adjacent to lot corner between Lots 19&20, Block A | |
| Forestview Ct. (Lots 33-43, Block A) 1+24.47, 14.25' Lt. | Adjacent to Fire Hydrant adjacent to lot corner between Lots 31&32, Block A | |

NOTE: ROLL TYPE CURB & GUTTER TO BE CONSTRUCTED ON THE PAVEMENT SHOWN ON THIS SHEET. TOP OF CURB ELEVATIONS ARE GIVEN FOR FULL HEIGHT CURB.

LIBERTY PARK 2ND ADDITION - PHASE I
FORESTVIEW CT.
 Lots 5-18, Block A

BAUGHMAN COMPANY P.A.
 ENGINEERING, SURVEYING, & PLANNING
 318-262-7271 • 315 ELLIS • WICHITA, KANSAS 67211

PROJECT NUMBER: _____ SHEET **11** OF **27**

DESIGN: NBW DRAWN: TMS APPROVED: _____ DATE: 4/30/03 SCALE: Noted

Liberty Park/315 02-10-E423