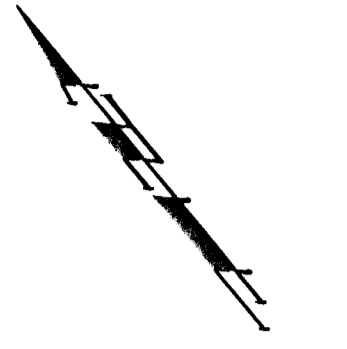
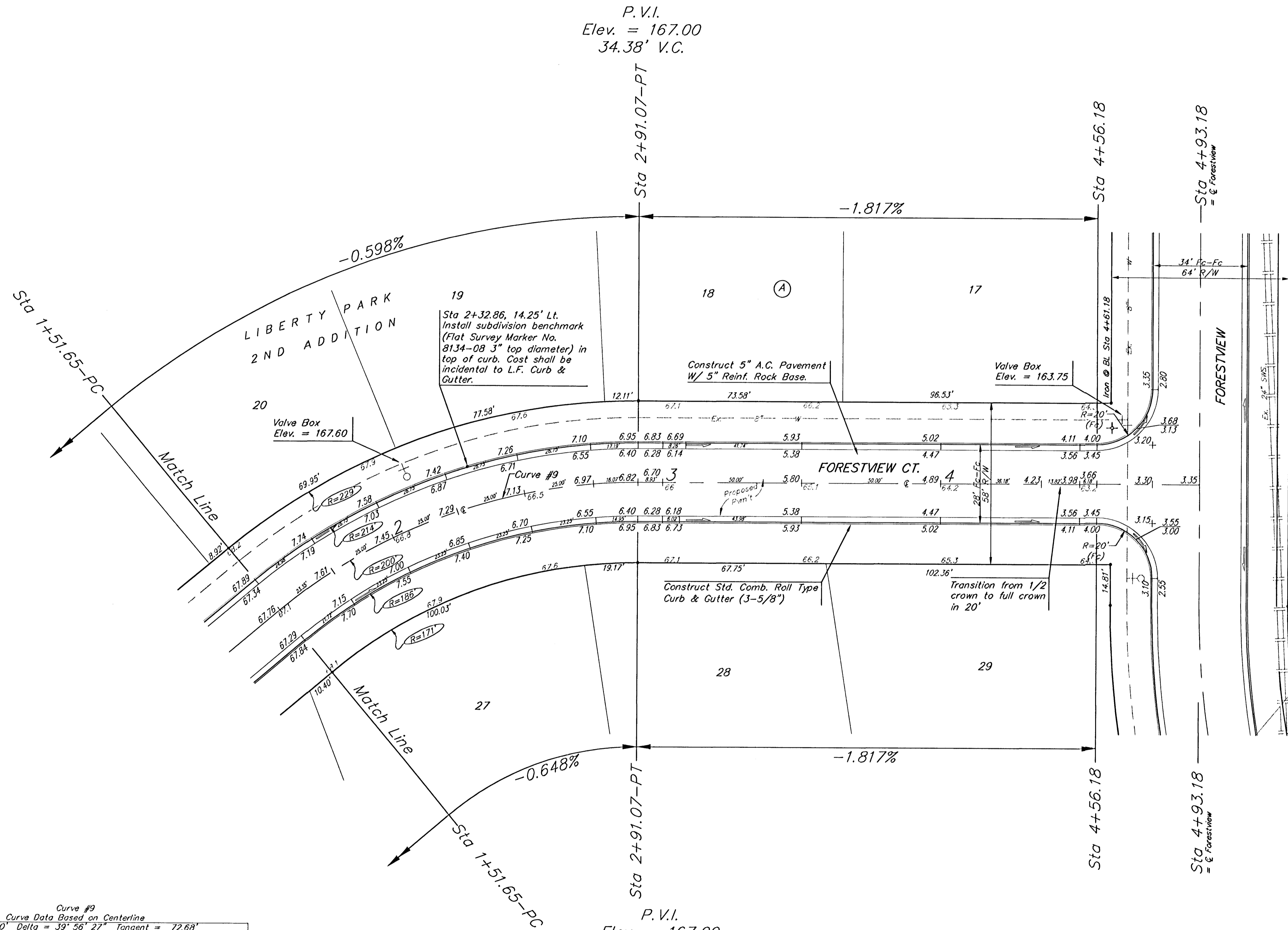


**BENCHMARKS:**  
 BM #1: C.O.W. benchmark disk.  
 56' E and 55' N of CL 135th  
 St. W. & 13th St. N.  
 Elev. = 167.83 (City Datum)

BM #2: 60D nail in HLP, 800'  
 W & 31' N of the NE cor.,  
 NW1/4, Sec. 13, T-27-S,  
 R-2-W.  
 Elev. = 162.68 (City Datum)



Scale: 1" = 20'  
 • = Iron



Curve #9  
 Curve Data Based on Centerline  
 Rad. = 200' Delta = 39° 56' 27" Tangent = 72.68'  
 Arc = 139.42' L.C. = 136.61' Def/Ft. = 8.59436 Min.

Station	Arc	FACE CHORD LENGTHS		Defl.	T. Defl.
		8' Lt.	8' Rt.		
1+51.65	-	-	-	0°00'00"	0°00'00"
1+75.00	23.35'	25.90'	20.77'	3°20'40"	3°20'40"
2+00.00	25.00'	27.73'	22.24'	3°34'51"	6°55'32"
2+25.00	25.00'	27.73'	22.24'	3°34'51"	10°30'24"
2+50.00	25.00'	27.73'	22.24'	3°34'51"	14°05'15"
2+75.00	25.00'	27.73'	22.24'	3°34'51"	17°40'07"
2+91.07	16.07'	17.83'	14.30'	2°18'06"	19°58'13"

**NOTE:** ROLL TYPE CURB & GUTTER TO BE CONSTRUCTED ON THE PAVEMENT SHOWN ON THIS SHEET. TOP OF CURB ELEVATIONS ARE GIVEN FOR FULL HEIGHT CURB.

**LIBERTY PARK 2ND ADDITION - PHASE I**  
**FORESTVIEW CT.**  
 Lots 19-32, Block A

**BAUGHMAN COMPANY P.A.**  
 ENGINEERING, SURVEYING, & PLANNING  
 315-262-7271 • 315 ELLIS • WICHITA, KANSAS 67211

PROJECT NUMBER: \_\_\_\_\_ SHEET: **13**  
 OF: **27**

DESIGN: NBW DRAWN: TMS APPROVED: \_\_\_\_\_ DATE: 4/30/03 SCALE: Noted