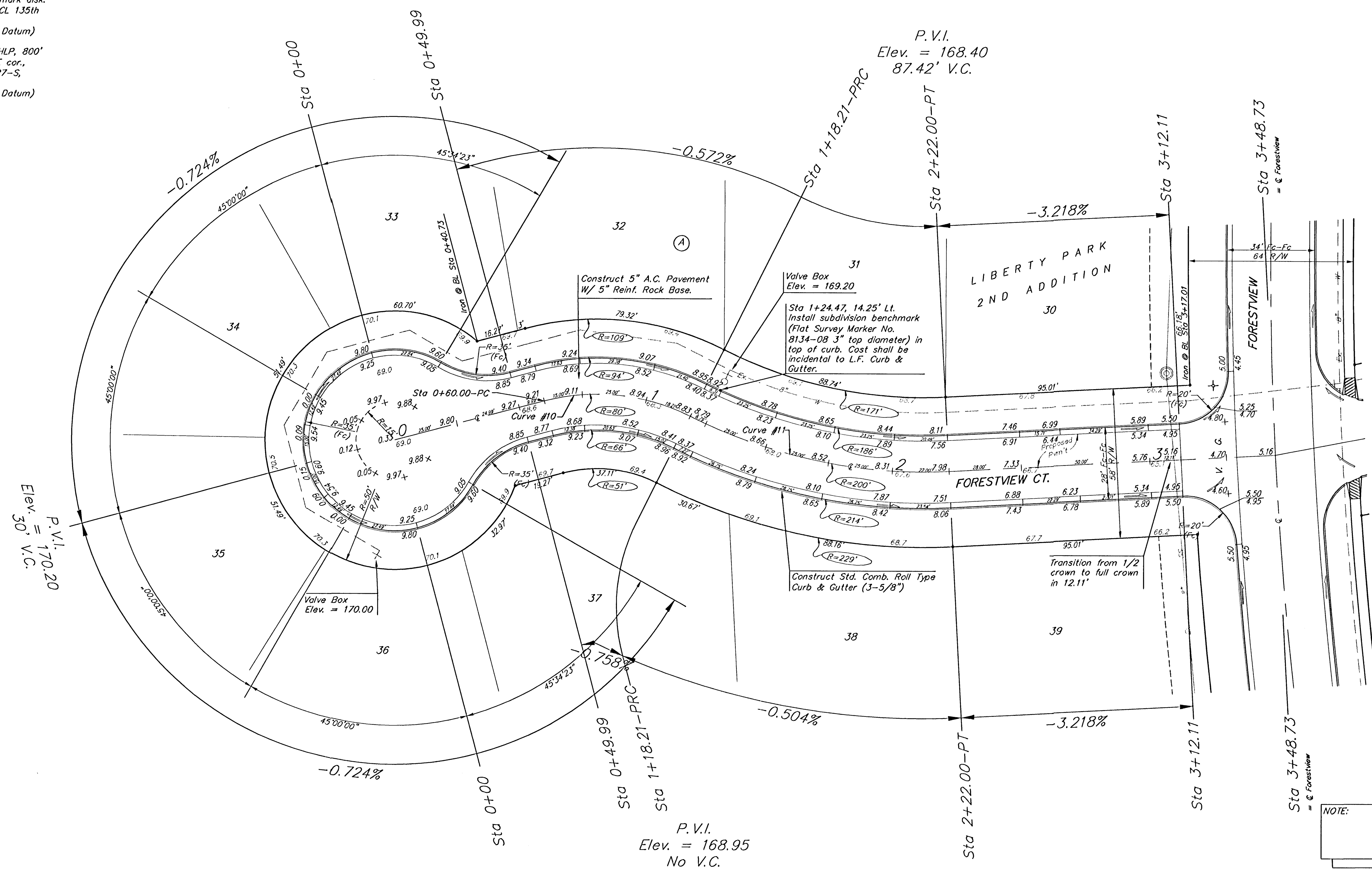
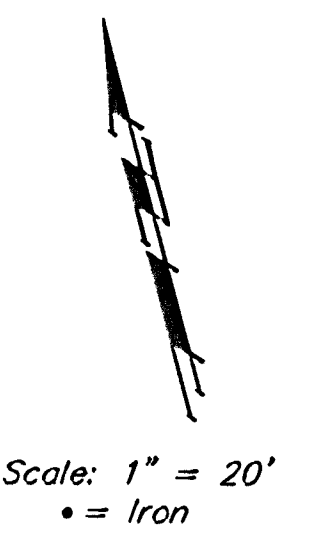


BENCHMARKS:  
 BM #1: C.O.W. benchmark disk.  
 56' E and 55' N of CL 135th  
 St. W. & 13th St. N.  
 Elev. = 167.83 (City Datum)

BM #2: 60D nail in HLP, 800'  
 W & 31' N of the NE cor.,  
 NW1/4, Sec. 13, T-27-S,  
 R-2-W.  
 Elev. = 162.68 (City Datum)



Curve #10  
 Curve Data Based on Centerline  
 Rad. = 80' Delta = 41° 41' 33" Tangent = 30.46'  
 Arc = 58.21' L.C. = 56.94' Del./Fl. = 21.48729 Min.

Station	Arc	FACE CHORD LENGTHS		Defl.	T. Defl.
		8' Lt.	8' Rt.		
0+60.00	-	-	-	0°00'00"	0°00'00"
0+75.00	15.00'	19.10'	10.86'	5°22'18"	5°22'18"
1+00.00	25.00'	31.75'	18.05'	8°57'11"	14°19'29"
1+18.21	18.21'	23.17'	13.17'	6°31'17"	20°50'46"

Curve #11  
 Curve Data Based on Centerline  
 Rad. = 200' Delta = 29° 43' 57" Tangent = 53.09'  
 Arc = 103.79' L.C. = 102.63' Del./Fl. = 8.59404 Min.

Station	Arc	FACE CHORD LENGTHS		Defl.	T. Defl.
		8' Lt.	8' Rt.		
1+18.21	-	-	-	0°00'00"	0°00'00"
1+25.00	6.79'	6.04'	7.54'	0°58'21"	0°58'21"
1+50.00	25.00'	22.23'	27.73'	3°34'51"	4°33'72"
1+75.00	25.00'	22.23'	27.73'	3°34'51"	8°08'03"
2+00.00	25.00'	22.23'	27.73'	3°34'51"	11°42'54"
2+22.00	22.00'	19.57'	24.41'	3°09'04"	14°51'58"

NOTE: ROLL TYPE CURB & GUTTER TO BE CONSTRUCTED ON THE PAVEMENT SHOWN ON THIS SHEET. TOP OF CURB ELEVATIONS ARE GIVEN FOR FULL HEIGHT CURB.

LIBERTY PARK 2ND ADDITION - PHASE I  
**FORESTVIEW CT.**  
 Lots 33-43, Block A

**BAUGHMAN COMPANY P.A.**  
 ENGINEERING, SURVEYING, & PLANNING  
 315-262-7271 • 313 ELLIS • WICHITA, KANSAS 67211

PROJECT NUMBER: \_\_\_\_\_ SHEET: **14**  
 DESIGN: NBW DRAWN: TMS APPROVED: \_\_\_\_\_ DATE: 4/30/03 SCALE: Noted  
 OF 27