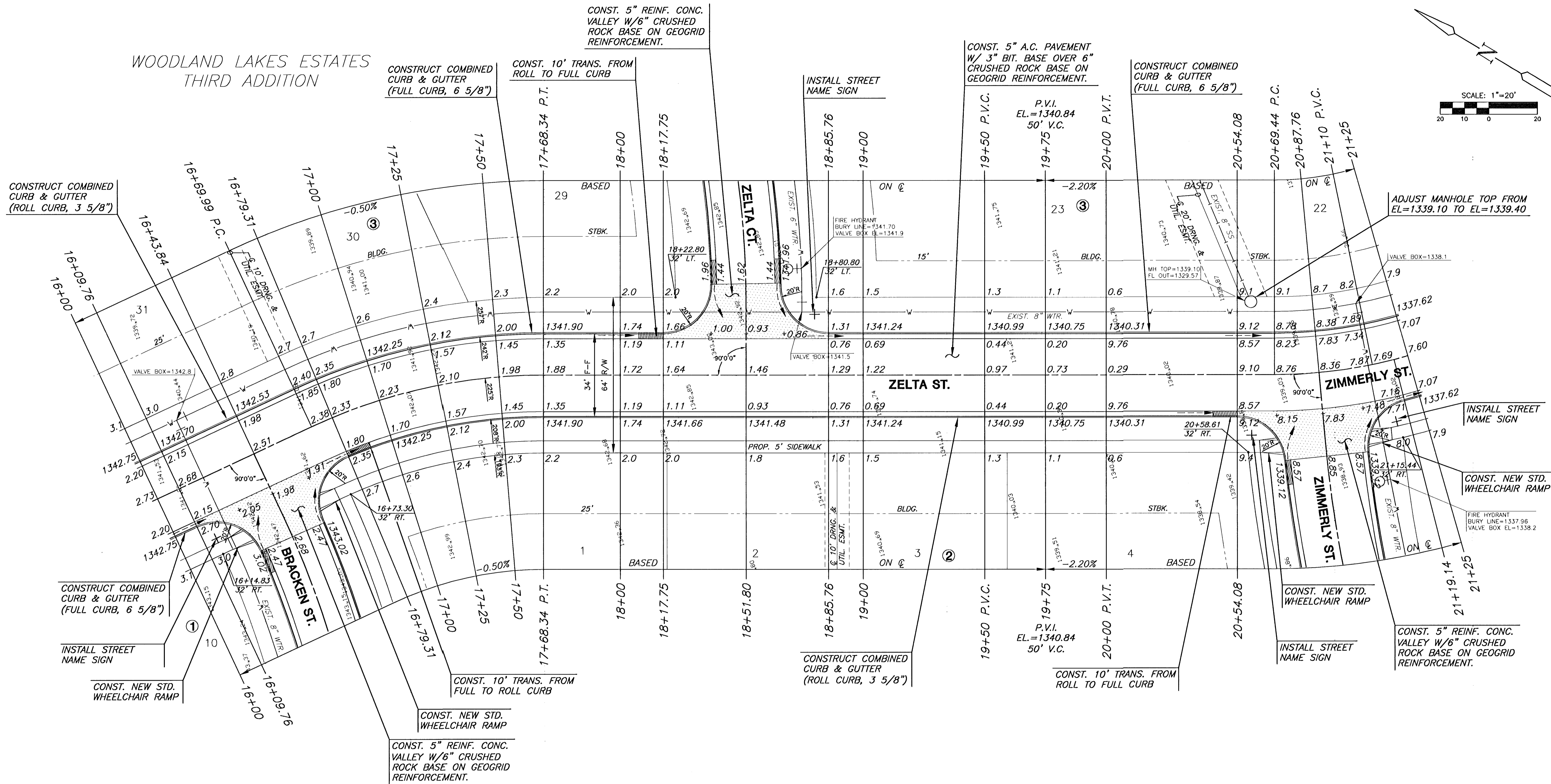
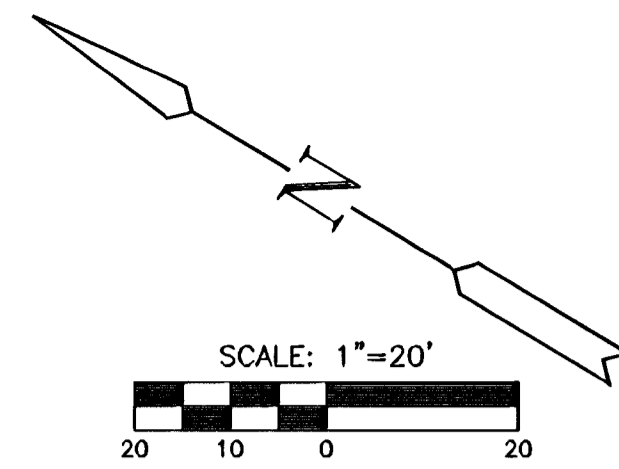


WOODLAND LAKES ESTATES  
THIRD ADDITION




WOODLAND LAKES ESTATES  
THIRD ADDITION

CURVE TABLE					
$\Delta = 25^{\circ}02'44''$ R = 225.00' T = 49.98' L = 98.35' LC = 97.57'					
CURVE DATA BASED ON CENTERLINE $\Delta / 2 = 12^{\circ}31'22''$					
STATION	ARC	CHORD LENGTH		DEFLECTION	TOTAL DEFLECTION
		'OFF LtCb	'OFF RtCb		
16+69.99	-	-	-	00°00'00"	00°00'00"
16+75.00	5.01'	5.39'	4.63'	00°38'16"	00°38'16"
17+00.00	25.00'	26.88'	23.10'	03°10'59"	03°49'16"
17+25.00	25.00'	26.88'	23.10'	03°10'59"	07°00'15"
17+50.00	25.00'	26.88'	23.10'	03°10'59"	10°11'14"
17+68.34	18.34'	19.72'	16.95'	02°20'08"	12°31'22"

Def/Ft = 7.63944 Min.

**NOTES:**  
 1. TOP OF CURB ELEVATIONS SHOWN ARE FOR FULL CURB.  
 2. CONTRACTOR SHALL REMOVE ALL TREES WITHIN ROAD R/W.

**LEGEND**  
 + STREET SIGN & SIGN LOCATION (SEE SIGN ASSEMBLY TABLE FOR TYPE & STATION OF SIGN)



**MKEC**  
ENGINEERING CONSULTANTS  
411 N. WEBB ROAD  
WICHITA, KS. 67206  
316-684-9600

**WOODLAND LAKES THIRD ADDITION  
ZELTA PHASE**  
PROJECT NAME

**PAVING PLANS - ZELTA ST. / ZIMMERLY ST.**  
SHEET TITLE

DESIGN BY: JAS  
DRAWN BY: ASH  
CHECKED BY:

DATE: JULY 2003  
JOB NO.: 02172E2  
SHEET OF: 9 / 42