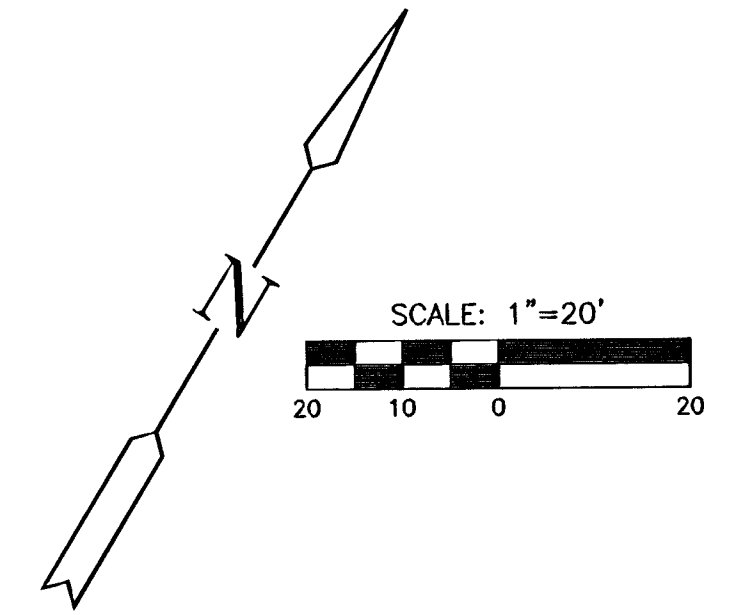
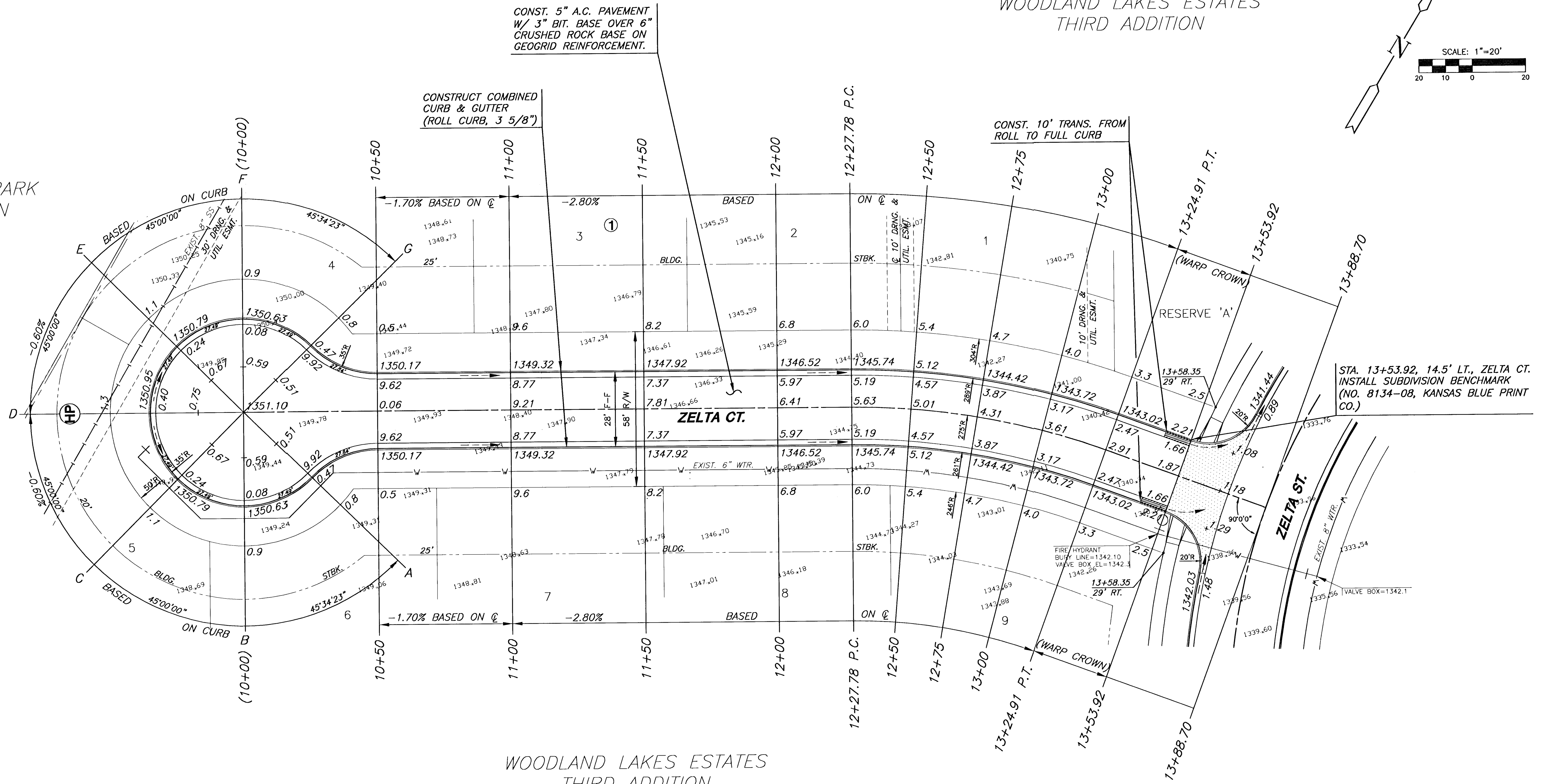


WOODLAND LAKES ESTATES
THIRD ADDITION



WINDSOR PARK
ADDITION



CONST. 5" A.C. PAVEMENT
W/ 3" BIT. BASE OVER 6"
CRUSHED ROCK BASE ON
GEOGRID REINFORCEMENT.

CONSTRUCT COMBINED
CURB & GUTTER
(ROLL CURB, 3 5/8")

CONST. 10' TRANS. FROM
ROLL TO FULL CURB

STA. 13+53.92, 14.5' LT., ZELTA CT.
INSTALL SUBDIVISION BENCHMARK
(NO. 8134-08, KANSAS BLUE PRINT
CO.)

WOODLAND LAKES ESTATES
THIRD ADDITION

CURVE TABLE					
$\Delta = 20^\circ 14' 12''$ $R = 275.00'$ $T = 49.08'$ $L = 97.13'$ $LC = 96.62'$					
CURVE DATA BASED ON CENTERLINE $\Delta / 2 = 10^\circ 07' 06''$					
STATION	ARC	CHORD LENGTH		DEFLECTION	TOTAL DEFLECTION
		' Off LtCb	' Off RtCb		
12+27.78	-	-	-	00° 00' 00"	00° 00' 00"
12+50.00	22.22'	23.34'	21.08'	02° 18' 53"	02° 18' 53"
12+75.00	25.00'	26.26'	23.72'	02° 36' 16"	04° 55' 09"
13+00.00	25.00'	26.26'	23.72'	02° 36' 16"	07° 31' 24"
13+24.91	24.91'	26.17'	23.63'	02° 35' 42"	10° 07' 06"

Def/Ft = 6.25045 Min.


SUBDIVISION BENCH MARKS				
NO.	STREET AND STATION	FROM CL	DESCRIPTION	ELEVATIONS
2	ZELTA CT., STA. 13+53.92	14.5' LT.	TOP OF CURB AT END OF RETURN, ZELTA CT.	

NOTE: CONTRACTOR SHALL INSTALL SUBDIVISION BENCH MARKS ("FLAT SURVEY MARKERS NO. 8134-08 3" TOP DIAMETER" PROVIDED BY KANSAS BLUE PRINT CO., INC.) COSTS TO BE CONSIDERED SUBSIDIARY TO CONSTRUCTION OF COMBINED CURB AND GUTTER.

- NOTES:
- TOP OF CURB ELEVATIONS SHOWN ARE FOR FULL CURB.
 - CONTRACTOR SHALL REMOVE ALL TREES WITHIN ROAD R/W.

LEGEND

+ STREET SIGN & SIGN LOCATION (SEE SIGN ASSEMBLY TABLE FOR TYPE & STATION OF SIGN)



MKEC
ENGINEERING
CONSULTANTS
411 N. WEBB ROAD
WICHITA, KS. 67206
316-684-9600

WOODLAND LAKES THIRD ADDITION
ZELTA PHASE
PROJECT NAME

PAVING PLANS - ZELTA COURT (WEST)
SHEET TITLE

DFL DESIGN BY:	JAS DRAWN BY:	ASH CHECKED BY:
JULY 2003 DATE	02172E4 JOB NO.	11 / 42 SHEET/OF