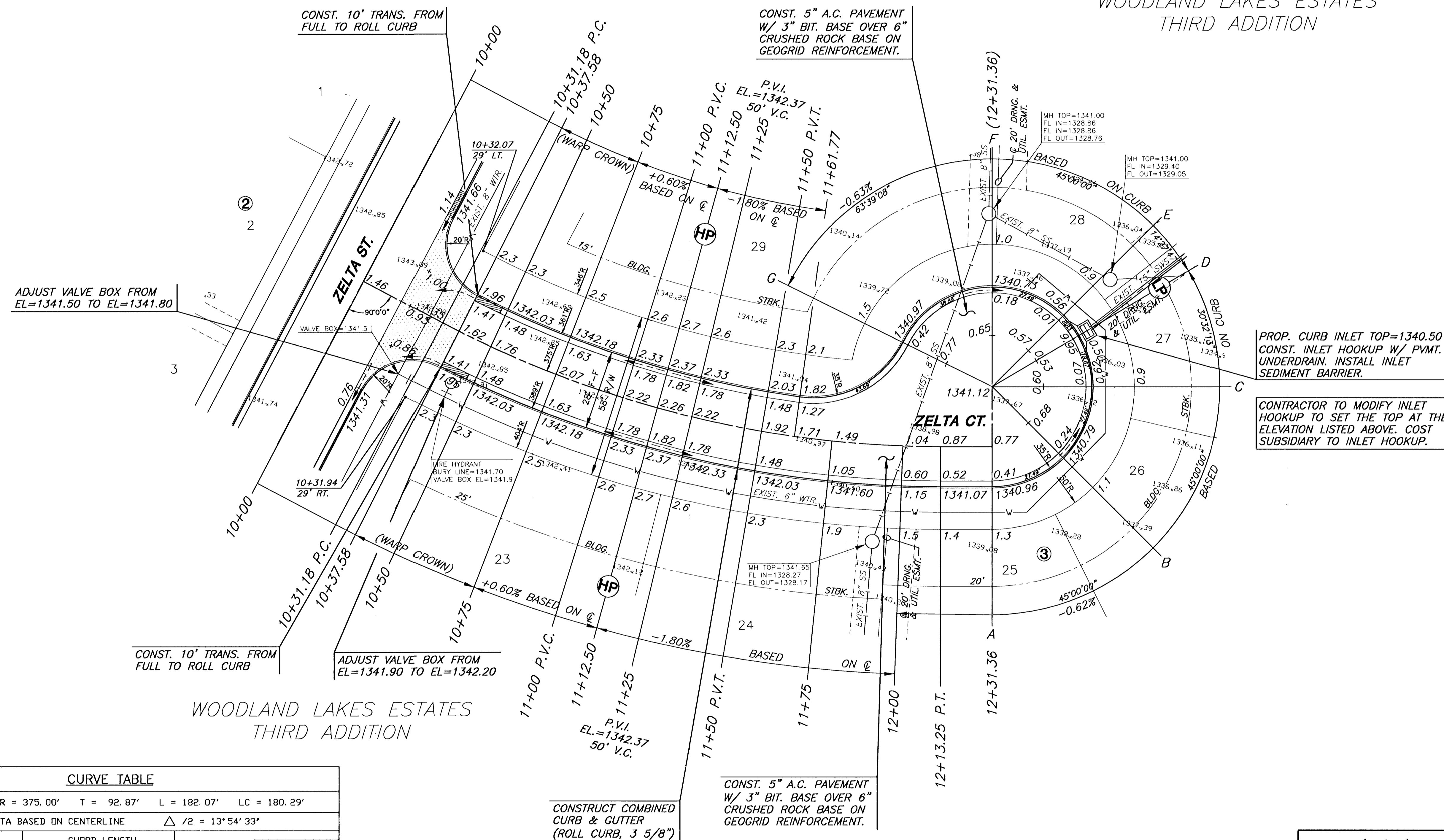


WOODLAND LAKES ESTATES
THIRD ADDITION



WOODLAND LAKES ESTATES
THIRD ADDITION

CURVE TABLE					
$\Delta = 27^{\circ}49'06''$ R = 375.00' T = 92.87' L = 182.07' LC = 180.29'					
CURVE DATA BASED ON CENTERLINE $\Delta / 2 = 13^{\circ}54'33''$					
STATION	ARC	CHORD LENGTH		DEFLECTION	TOTAL DEFLECTION
		'Off LtCb	'Off RtCb		
10+31.18	-	-	-	00°00'00"	00°00'00"
10+50.00	18.82'	18.12'	19.52'	01°26'16"	01°26'16"
10+75.00	25.00'	24.06'	25.93'	01°54'35"	03°20'51"
11+00.00	25.00'	24.06'	25.93'	01°54'35"	05°15'27"
11+25.00	25.00'	24.06'	25.93'	01°54'35"	07°10'02"
11+50.00	25.00'	24.06'	25.93'	01°54'35"	09°04'38"
11+75.00	25.00'	24.06'	25.93'	01°54'35"	10°59'13"
12+00.00	25.00'	24.06'	25.93'	01°54'35"	12°53'49"
12+13.25	13.25'	12.76'	13.74'	01°00'44"	13°54'33"

Def/Ft = 4.58366 Min.

- NOTES:**
- TOP OF CURB ELEVATIONS SHOWN ARE FOR FULL CURB.
 - CONTRACTOR SHALL REMOVE ALL TREES WITHIN ROAD R/W.
- LEGEND**
- ✦ + STREET SIGN & SIGN LOCATION (SEE SIGN ASSEMBLY TABLE FOR TYPE & STATION OF SIGN)

MKEC
ENGINEERING
CONSULTANTS
411 N. WEBB ROAD
WICHITA, KS. 67206
316 - 684 - 9600

**WOODLAND LAKES THIRD ADDITION
ZELTA PHASE**
PROJECT NAME

PAVING PLANS - ZELTA COURT (EAST)
SHEET TITLE

DFL DESIGN BY:	JAS DRAWN BY:	ASH CHECKED BY:
JULY 2003 DATE	02172E5 JOB NO.	12 / 42 SHEET/OF