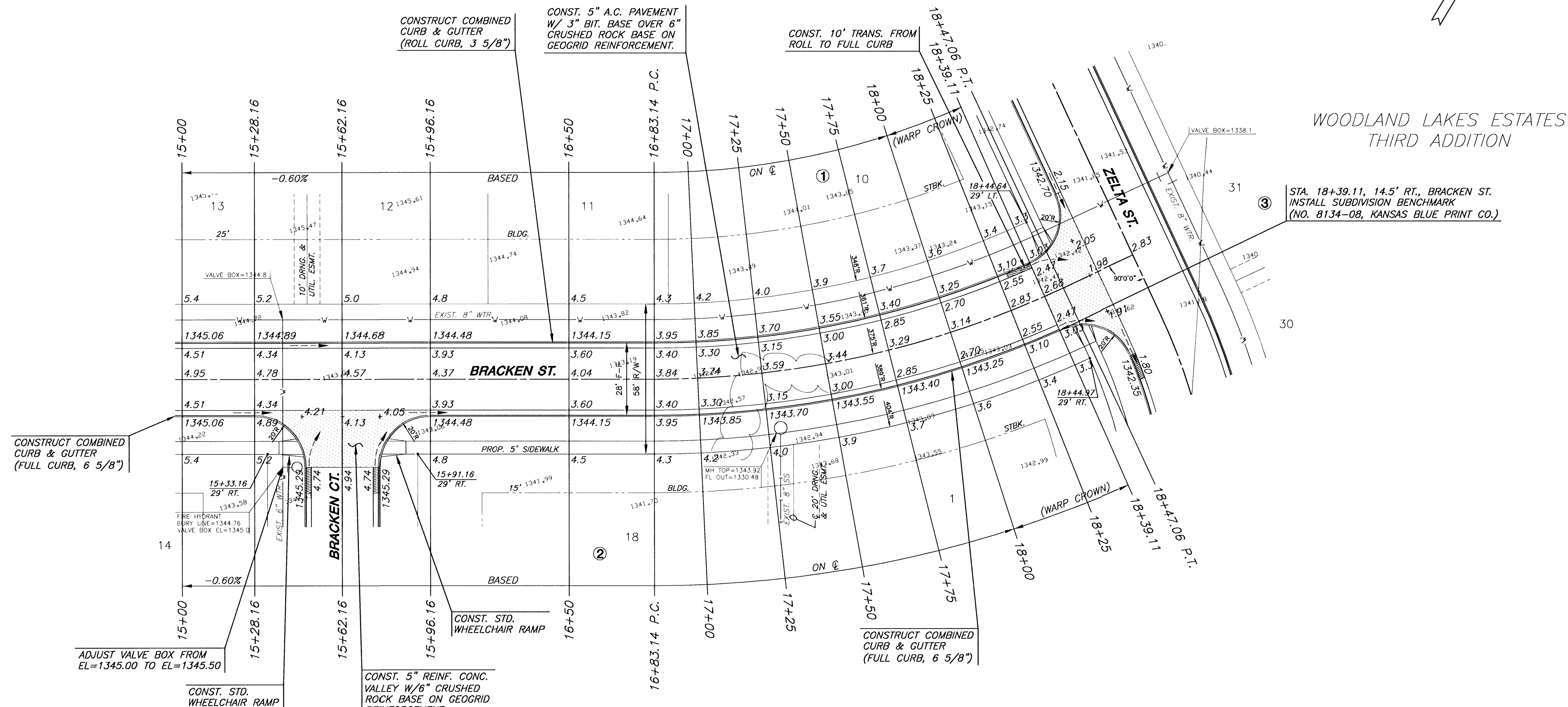
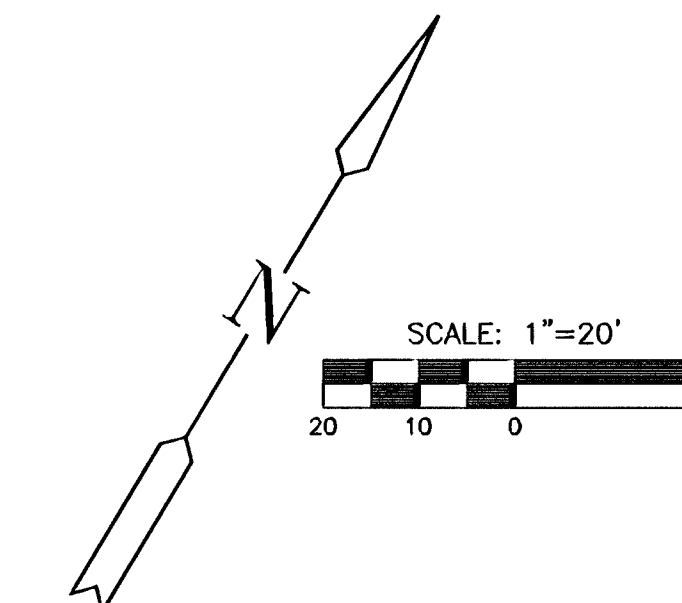


WOODLAND LAKES ESTATES
THIRD ADDITION



STA. 18+39.11, 14.5' RT., BRACKEN ST.
INSTALL SUBDIVISION BENCHMARK
(NO. 8134-08, KANSAS BLUE PRINT CO.)

ADJUST VALVE BOX FROM
EL=1345.00 TO EL=1345.50

CURVE TABLE

$\Delta = 25^\circ 02' 44''$ R = 375.00' T = 83.29' L = 163.92' LC = 162.62'

CURVE DATA BASED ON CENTERLINE $\Delta / 2 = 12^\circ 31' 22''$

STATION	ARC	CHORD LENGTH		DEFLECTION	TOTAL DEFLECTION
		' Off Ltcb	' Off Rtcb		
16+83.14	-	-	-	00° 00' 00"	00° 00' 00"
17+00.00	16.86'	16.23'	17.49'	01° 17' 17"	01° 17' 17"
17+25.00	25.00'	24.06'	25.93'	01° 54' 35"	03° 11' 52"
17+50.00	25.00'	24.06'	25.93'	01° 54' 35"	05° 06' 28"
17+75.00	25.00'	24.06'	25.93'	01° 54' 35"	07° 01' 03"
18+00.00	25.00'	24.06'	25.93'	01° 54' 35"	08° 55' 39"
18+25.00	25.00'	24.06'	25.93'	01° 54' 35"	10° 50' 14"
18+47.06	22.06'	21.24'	22.88'	01° 41' 08"	12° 31' 22"

Def/Ft = 4.58366 Min.

WOODLAND LAKES ESTATES
THIRD ADDITION

SUBDIVISION BENCH MARKS

NO.	STREET AND STATION	FROM CL	DESCRIPTION	ELEVATIONS
4	BRACKEN ST., STA. 18+39.11	14.5' RT.	TOP OF CURB AT END OF RETURN, BRACKEN ST.	

NOTE: CONTRACTOR SHALL INSTALL SUBDIVISION BENCH MARKS ("FLAT SURVEY MARKERS NO. 8134-08 3" TOP DIAMETER" PROVIDED BY KANSAS BLUE PRINT CO., INC.) COSTS TO BE CONSIDERED SUBSIDIARY TO CONSTRUCTION OF COMBINED CURB AND GUTTER.

NOTES:

- TOP OF CURB ELEVATIONS SHOWN ARE FOR FULL CURB.
- CONTRACTOR SHALL REMOVE ALL TREES WITHIN ROAD R/W.

LEGEND

✦ + STREET SIGN & SIGN LOCATION (SEE SIGN ASSEMBLY TABLE FOR TYPE & STATION OF SIGN)

WOODLAND LAKES THIRD ADDITION
ZETA PHASE
PROJECT NAME

PAVING PLANS - BRACKEN STREET
SHEET TITLE

MKEC
ENGINEERING CONSULTANTS
411 N. WEBB ROAD
WICHITA, KS. 67208
316-684-9600

DFL DESIGN BY.	JAS DRAWN BY.	ASH CHECKED BY.
JULY 2003 DATE	02172E7 JOB NO.	14 / 42 SHEET OF