

STREET IMPROVEMENTS FOR OSIE STREET From Hydraulic Ave. To Kansas Ave.

Project Number
472-83705

OCA NO.: 765783

CITY OF WICHITA, KANSAS
Neil D Cable, P.E., City Engineer

Index of Sheets:

- 1 Title Sheet
- 2 Typical Section
- 3 Valley Gutter & handicap Ramp Details
- 4 Driveway Details
- 5 Paving Plan Sta. 10+00 to 15+00
- 6 Paving Plan Sta. 15+00 to 19+06
- 7-8 Cross Sections
- 9 BMP Details
- 10 Demolition Plan
- 11 Signing Details

GENERAL NOTES

1. Contractor will be required to provide notice to utility companies a minimum of twenty-four (24) hours prior to any excavation, as follows:

Kansas One-Call 687-2470

The Contractor must notify the following in case of an emergency:

- Cox Communications 262-4270
- or Westar Energy/ 263-2061
- Kansas Gas & Electric Company 383-8600
- Southwestern Bell Telephone Company 1-571-2611
- City of Wichita Water Department 268-4908
- City of Wichita Sewer Department 268-4071
- Aquila Natural Gas 942-8811
- or 1-800-303-0357

2. Exist. utilities and their locations, as shown on the plans, represent the best information obtainable for design. Location information has been obtained from the various utility companies and is either from company record drawings or company-provided field locations. The Contractor will be required to work around existing utilities which do not conflict with proposed construction.

3. The Contractor to verify utility locations prior to construction of this project.

4. Utility service and installation shall be coordinated with the respective utility owners. Contacts are:

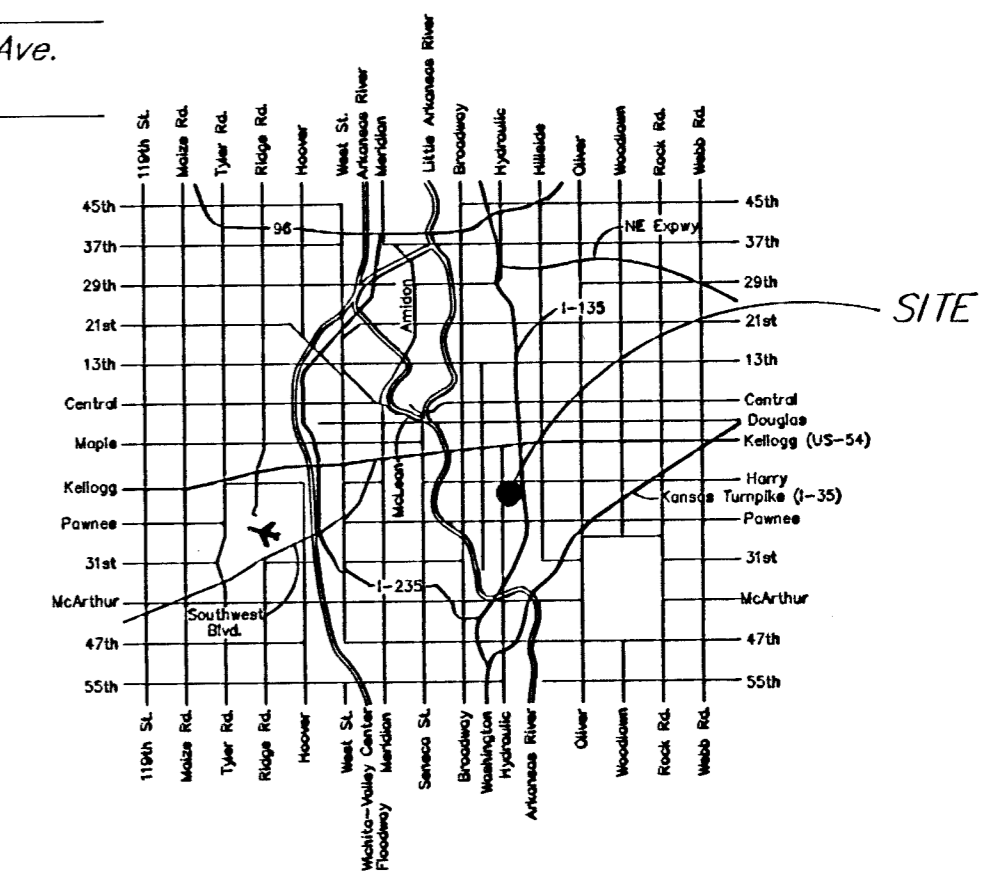
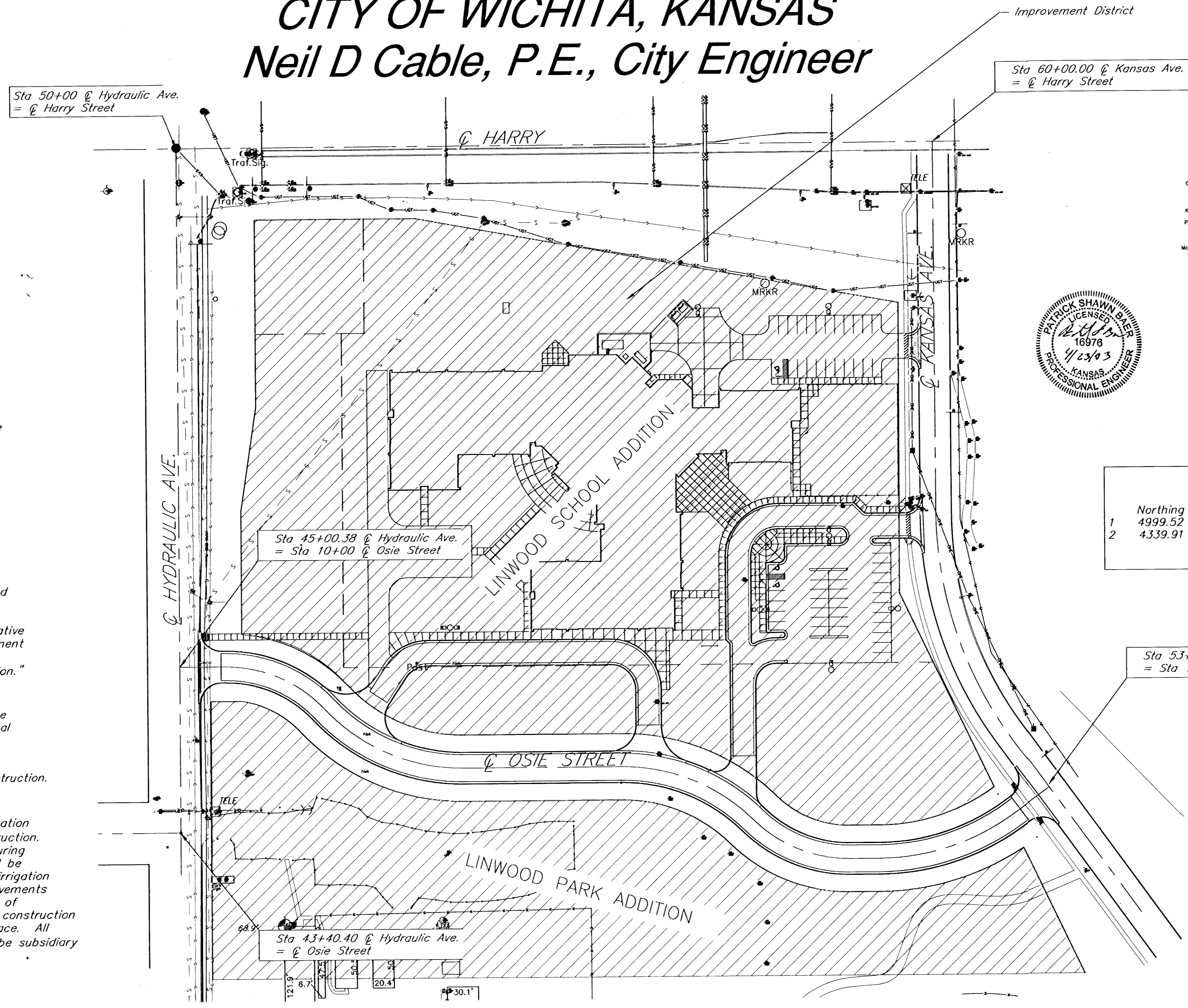
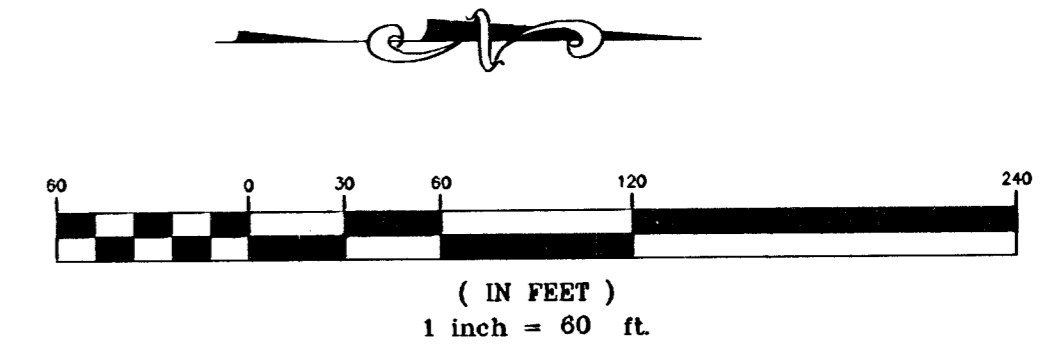
- Kansas Gas Service James Stoltz 831-3122
- Weststar Energy Shane Price 261-6251
- Aquila Networks Gas John Stark 942-8811
- Wichita Water Paul Bryant 268-4555
- Steve Palmer 268-4908
- Southwestern Bell Jim Tobin 268-2759
- Cox Communications Mark Anaya 262-4270

5. All lawn/turf areas disturbed by construction of proposed improvements shall be restored with sod. All sodding work shall be in accordance with the City of Wichita standard specifications and the City of Wichita administrative regulation No. AR78 which governs cleanup and replacement following construction. All costs for this work shall be subsidiary to the lump sum price bid for "Site Restoration."

6. Traffic affected by the construction of this project shall be handled in accordance with the latest edition of the Manual on Uniform Traffic Control Devices.

7. All commercial signs to be moved by others prior to construction.

8. Properties within the project may have underground irrigation systems (lawn sprinklers) which conflict with new construction. Contractor shall remove such components as needed during construction of the project. The irrigation system shall be reinstalled in like kind before project completion. Any irrigation system modifications required because of project improvements shall be coordinated with the property owner. Portions of underground irrigation systems not in conflict with new construction shall be protected from damage and shall remain in place. All work related to underground irrigations/sprinklers shall be subsidiary to Site Restoration.



LOCATION MAP

CONTROL POINTS

	Northing	Easting	Station Description
1	4999.52	10000.05	50+00 IP Intersection of Harry & Hydraulic
2	4339.91	10000.04	43+40.40 Intersection of Osie and Hydraulic

BENCHMARK:
City disc on the traffic signal base on the southeast corner of Harry and Hydraulic.
Elevation=100.26 City Datum

kemiller
engineering

516 S. Market,
Wichita, KS 67202

316/264-0242