

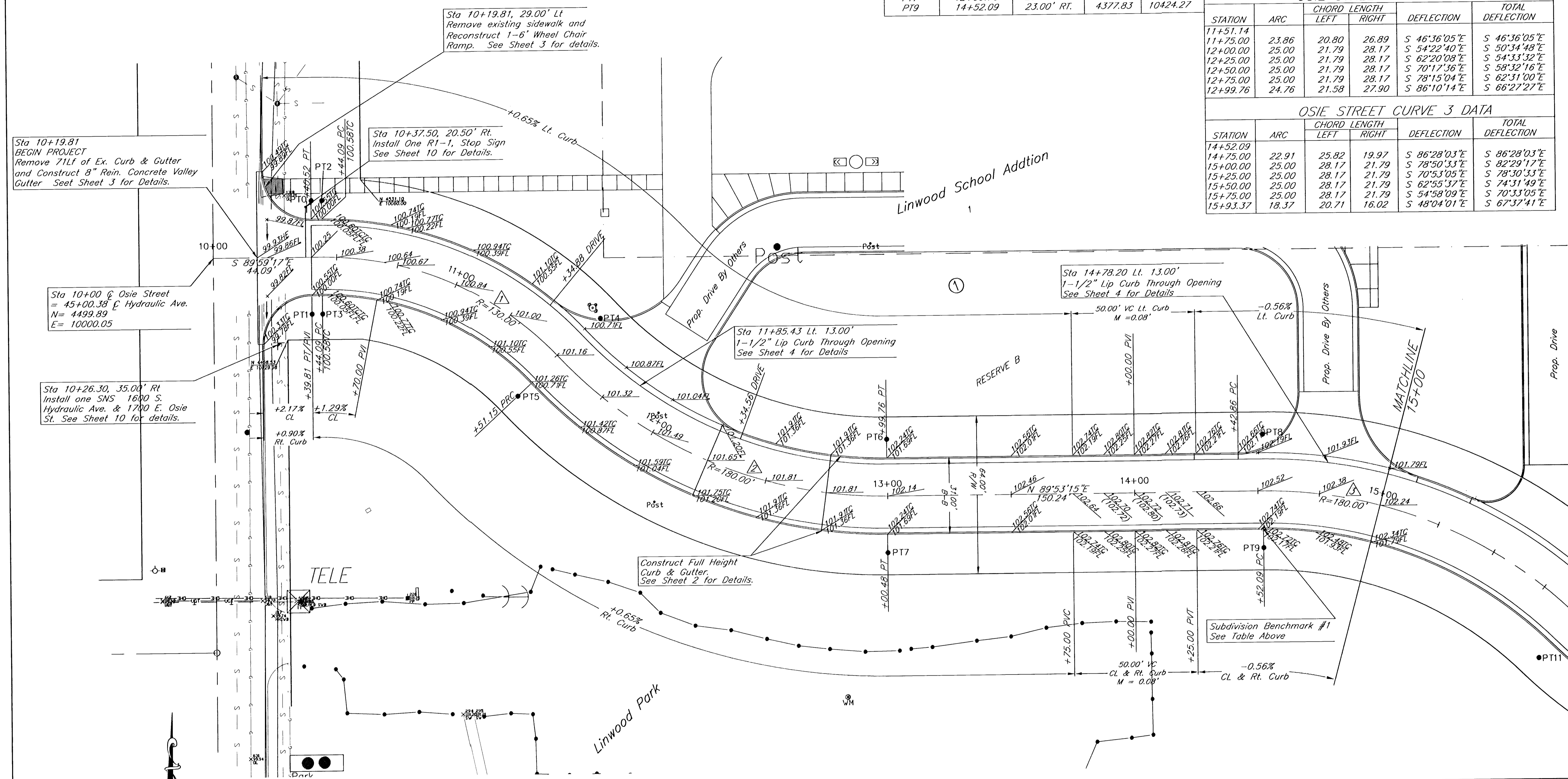
OSIE STREET SUBDIVISION BENCHMARK				
No.	Street and Station	From CL	Description	Elevation
1	Sta 14+52.09 Osie Street	15.25'	South curb line Osie Street, 14' West of the West curb on Bus Entrance Linwood School, 424' West of Hydraulic	

OSIE STREET 8' @ FC STAKING COORDINATES				
POINT#	STATION	OFFSET	NORTHING	EASTING
PT0	10+39.79	23.00' LT.	4522.89	10039.84
PT2	10+44.09	23.00' LT.	4522.88	10044.14
PT4	11+51.14	23.00' LT.	4473.85	10156.36
PT6	12+99.76	23.00' LT.	4423.53	10271.85
PT8	14+52.09	23.00' LT.	4423.83	10424.18
PT1	10+39.79	23.00' RT.	4476.89	10039.83
PT3	10+44.09	23.00' RT.	4476.88	10044.13
PT5	11+51.14	23.00' RT.	4442.59	10122.61
PT7	12+99.76	23.00' RT.	4377.53	10271.94
PT9	14+52.09	23.00' RT.	4377.83	10424.27

OSIE STREET CURVE 1 DATA					
STATION	ARC	CHORD LENGTH		DEFLECTION	TOTAL DEFLECTION
		LEFT	RIGHT		
10+44.09					
10+50.00	5.91	6.96	4.86	S 88°41'07"E	S 88°41'07"E
10+75.00	25.00	29.38	20.55	S 81°52'25"E	S 83°10'34"E
10+75.00	25.00	29.38	20.55	S 70°51'19"E	S 77°40'00"E
11+00.00	25.00	29.38	20.55	S 59°50'12"E	S 72°09'27"E
11+25.00	25.00	29.38	20.55	S 48°49'06"E	S 66°38'54"E
11+50.00	25.00	29.38	20.55	S 43°03'29"E	S 66°23'50"E
11+51.14	1.14	1.34	0.94		

OSIE STREET CURVE 2 DATA					
STATION	ARC	CHORD LENGTH		DEFLECTION	TOTAL DEFLECTION
		LEFT	RIGHT		
11+51.14					
11+75.00	23.86	20.80	26.89	S 46°36'05"E	S 46°36'05"E
12+00.00	25.00	21.79	28.17	S 54°22'40"E	S 50°34'48"E
12+25.00	25.00	21.79	28.17	S 62°20'08"E	S 54°33'32"E
12+50.00	25.00	21.79	28.17	S 70°17'36"E	S 58°32'16"E
12+75.00	25.00	21.79	28.17	S 78°15'04"E	S 62°31'00"E
12+99.76	24.76	21.58	27.90	S 86°10'14"E	S 66°27'27"E

OSIE STREET CURVE 3 DATA					
STATION	ARC	CHORD LENGTH		DEFLECTION	TOTAL DEFLECTION
		LEFT	RIGHT		
14+52.09					
14+75.00	22.91	25.82	19.97	S 86°28'03"E	S 86°28'03"E
15+00.00	25.00	28.17	21.79	S 78°50'33"E	S 82°29'17"E
15+25.00	25.00	28.17	21.79	S 70°53'05"E	S 78°30'33"E
15+50.00	25.00	28.17	21.79	S 62°55'37"E	S 74°31'49"E
15+75.00	25.00	28.17	21.79	S 54°58'09"E	S 70°33'05"E
15+93.37	18.37	20.71	16.02	S 48°04'01"E	S 67°37'41"E



BENCHMARK:
 City disc on the traffic signal base on the southeast corner of Harry and Hydraulic.
 Elevation=100.26 City Datum

Osie Street Improvements
Sta 10+00 to 15+00
 Wichita, Kansas

kemiller engineering		PROJECT NUMBER 472-83705	DATE 3/03	SHEET 5
		DESIGN PB	DRAWN PB	REVISED 04/22/03
518 S. Market, Wichita, KS 67202		316/284-0242		OF 11