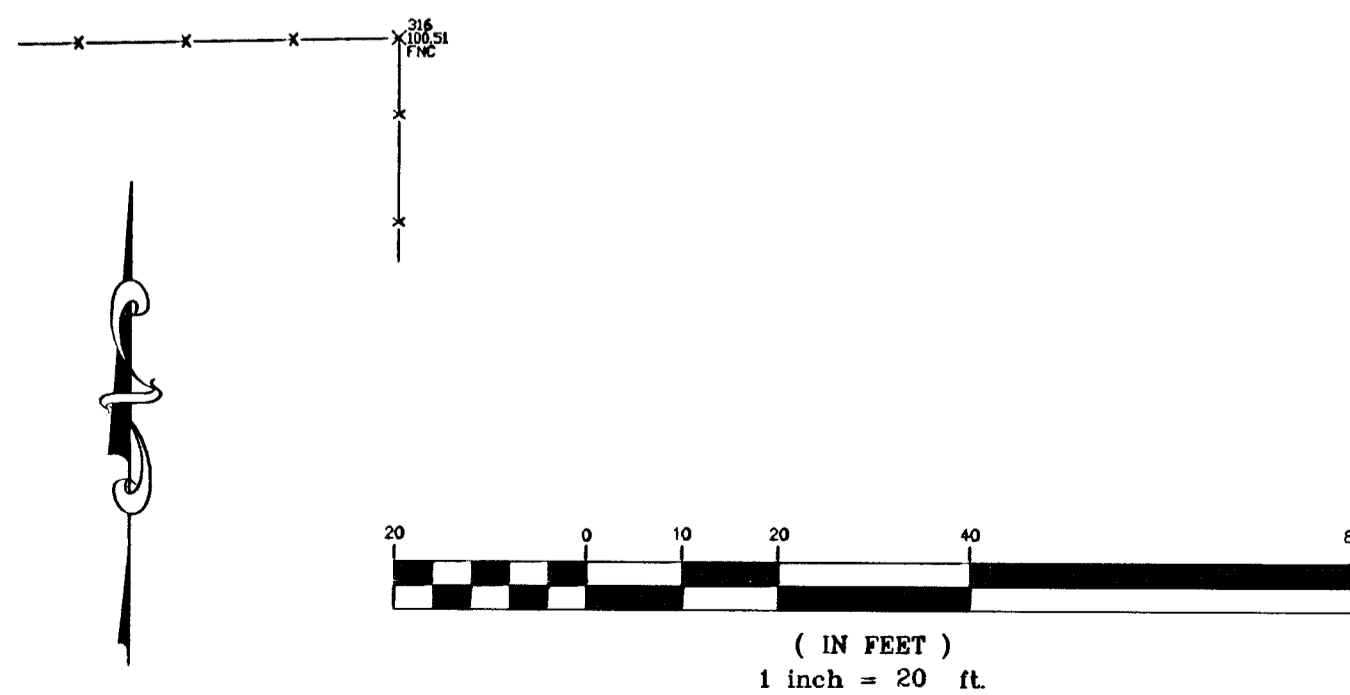
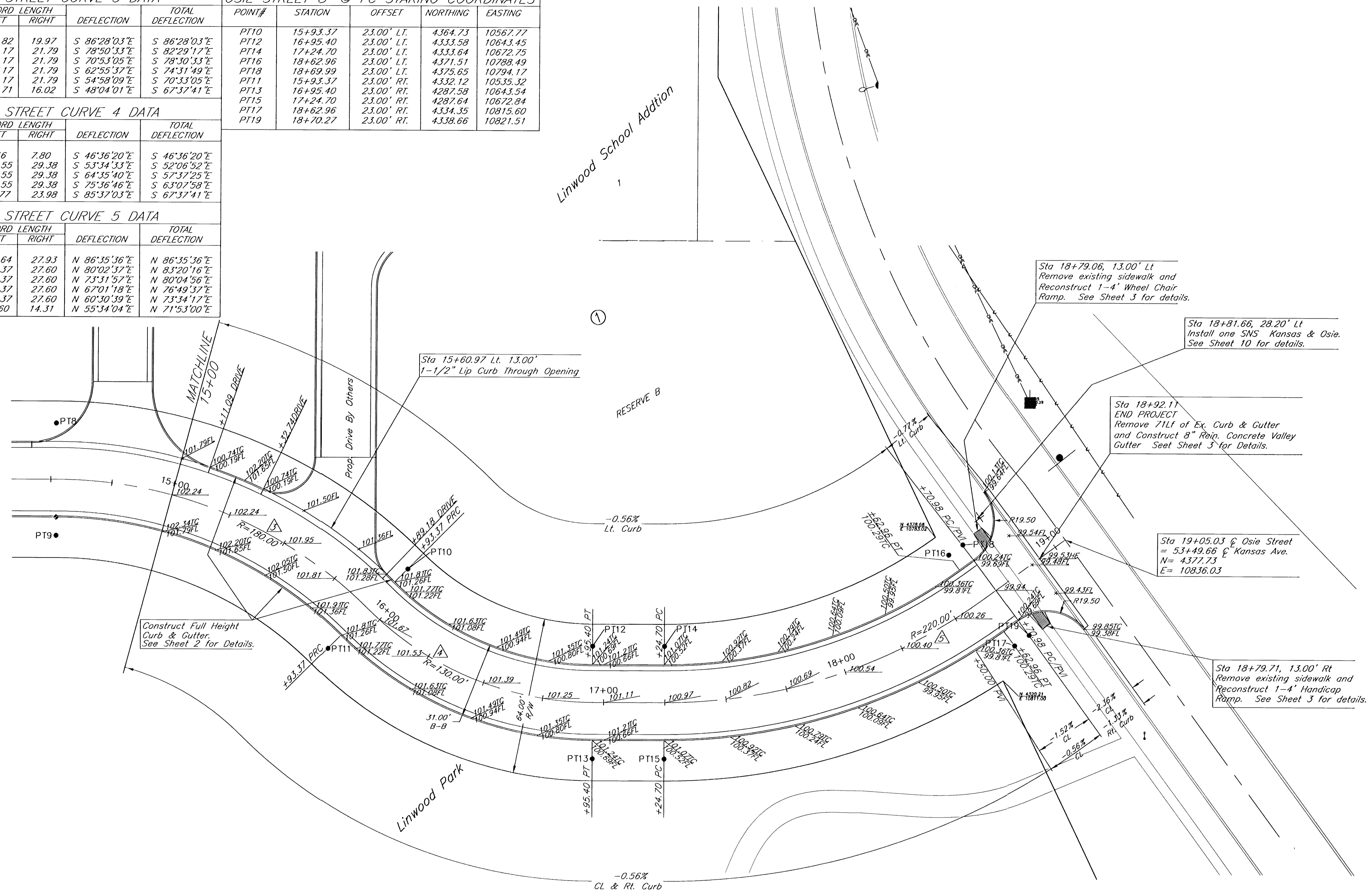


OSIE STREET CURVE 3 DATA					
STATION	ARC	CHORD LENGTH		DEFLECTION	TOTAL DEFLECTION
		LEFT	RIGHT		
14+52.09	22.91	25.82	19.97	S 86°28'03"E	S 86°28'03"E
14+75.00	25.00	28.17	21.79	S 78°50'33"E	S 82°29'17"E
15+00.00	25.00	28.17	21.79	S 70°53'05"E	S 78°30'33"E
15+25.00	25.00	28.17	21.79	S 62°55'37"E	S 74°31'49"E
15+50.00	25.00	28.17	21.79	S 54°58'09"E	S 70°33'05"E
15+75.00	25.00	28.17	21.79	S 48°04'01"E	S 67°37'41"E

OSIE STREET 8' @ FC STAKING COORDINATES				
POINT#	STATION	OFFSET	NORTHING	EASTING
PT10	15+93.37	23.00' LT.	4364.73	10567.77
PT12	16+95.40	23.00' LT.	4333.58	10643.45
PT14	17+24.70	23.00' LT.	4333.64	10672.75
PT16	18+62.96	23.00' LT.	4371.51	10788.49
PT18	18+69.99	23.00' LT.	4375.65	10794.17
PT11	15+93.37	23.00' RT.	4332.12	10535.32
PT13	16+95.40	23.00' RT.	4287.58	10643.54
PT15	17+24.70	23.00' RT.	4287.64	10672.84
PT17	18+62.96	23.00' RT.	4334.35	10815.60
PT19	18+70.27	23.00' RT.	4338.66	10821.51

OSIE STREET CURVE 4 DATA					
STATION	ARC	CHORD LENGTH		DEFLECTION	TOTAL DEFLECTION
		LEFT	RIGHT		
15+93.37	6.63	5.46	7.80	S 46°36'20"E	S 46°36'20"E
16+00.00	25.00	20.55	29.38	S 53°34'33"E	S 52°06'52"E
16+25.00	25.00	20.55	29.38	S 64°35'40"E	S 57°37'25"E
16+50.00	25.00	20.55	29.38	S 75°36'46"E	S 63°07'58"E
16+75.00	25.00	20.55	29.38	S 85°37'03"E	S 67°37'41"E

OSIE STREET CURVE 5 DATA					
STATION	ARC	CHORD LENGTH		DEFLECTION	TOTAL DEFLECTION
		LEFT	RIGHT		
17+24.70	25.30	22.64	27.93	N 86°35'36"E	N 86°35'36"E
17+50.00	25.00	22.37	27.60	N 80°02'37"E	N 83°20'16"E
18+00.00	25.00	22.37	27.60	N 73°31'57"E	N 80°04'56"E
18+25.00	25.00	22.37	27.60	N 67°01'18"E	N 76°49'37"E
18+50.00	25.00	22.37	27.60	N 60°30'39"E	N 73°34'17"E
18+62.96	12.96	11.60	14.31	N 55°34'04"E	N 71°53'00"E



**BENCHMARK:**  
 City disc on the traffic signal base on the southeast corner of Harry and Hydraulic.  
 Elevation=100.26 City Datum

- Sta 18+79.06, 13.00' Lt  
Remove existing sidewalk and Reconstruct 1-4' Wheel Chair Ramp. See Sheet 3 for details.
- Sta 18+81.66, 28.20' Lt  
Install one SNS Kansas & Osie. See Sheet 10 for details.
- Sta 18+92.11  
END PROJECT  
Remove 71lf of Ex. Curb & Gutter and Construct 8" Reim. Concrete Valley Gutter. See Sheet 5 for Details.
- Sta 19+05.03 @ Osie Street = 53+49.66 @ Kansas Ave.  
N= 4377.73  
E= 10836.03
- Sta 18+79.71, 13.00' Rt  
Remove existing sidewalk and Reconstruct 1-4' Handicap Ramp. See Sheet 3 for details.

Osie Street Improvements. Sta 15+00 to 19+06 Wichita, Kansas			
<b>kemiller</b> engineering	PROJECT NUMBER 472-83705		
	KEM NO. 02131	FILE plan2	DATE 3/03
DESIGN pb	DRAWN pb	REVISED 4/22/03	SHEET 6 OF 11
516 S. Market, Wichita, KS 67202		316/284-0242	