

STREET PAVING FOR LARK to serve SOUTHERN RIDGE ADDITION

Part 1

**Yosemite, from the west line of Maize Road,
west to the west line of the plat.
Yosemite Ct., from the north line of Yosemite,
north to and including the cul-de-sac
Lamp Cir., from the south line of Yosemite,
south and east to and including the cul-de-sac**

Part 2

**Lark, from the south line of Pawnee Avenue
to the south line of Atlanta
Atlanta, from the east line of Lark Lane,
east to and including the cul-de-sac
Westgate, from the south line of Atlanta Cir.,
south to the west line of the plat
Westgate Ct., (Lots 22 through 39, Block A), from the east
line of Westgate, east to and including the cul-de-sac**

CITY OF WICHITA, KANSAS

Neil Cable, P.E. City Engineer

Project Number

472-83681

O.C.A. Number:

765778

GENERAL NOTES:

1. Contractor will be required to provide notice to utility companies a minimum of twenty-four (24) hours prior to any excavation, as follows:

| | |
|------------------------------------|----------------|
| Kansas One-Call | 687-2470 |
| Cox Communications | 262-4270 |
| Kansas Gas Service | 1-888-482-4950 |
| Westar Energy | 383-8650 |
| Aquila Energy | 1-888-482-4950 |
| Southwestern Bell | 268-2245 |
| City of Wichita Water Dept. | 268-4563 |
| City of Wichita Sewer Maint. | 268-4024 |
| City of Wichita Storm Sewer Maint. | 268-4090 |
| City of Wichita Traffic Maint. | 268-4034 |
| Conoco Pipeline Co. | 1-800-231-2551 |
| Williams Pipeline Co. | 529-6600 |
| Phillips Pipeline Co. | 1-800-766-8230 |
2. Utility service lines, poles, valve boxes, meters, and etcetera are to be adjusted as necessary by others prior to construction unless the plans specifically call for their adjustment by the Contractor or unless the plans specifically identify a utility to be adjusted by its owner during construction. Existing utilities and their location, as shown on the plans, represent the best information obtainable for design. The contractor will be required to work around existing utilities within the right-of-way which do not conflict with proposed construction.
3. Trees and shrubs in public right-of-way which are in direct conflict with proposed new construction shall be removed by the Contractor with the Engineer's approval. Trees and shrubs which are not in direct conflict with proposed new construction shall be saved and protected from damage.
4. The Contractor shall be responsible for preserving property irons. The Contractor will be required to re-establish any property irons which are damaged or destroyed by his construction operations. Such irons shall be re-established by a licensed land surveyor in accordance with state law.
5. Rubble from the removal of miscellaneous structures and excess excavation which is to be wasted shall be disposed of on sites to be provided by the Contractor. These sites shall be approved by the Engineer as to suitability, appearance and site location. Locations that, in the opinion of the Engineer, will leave an unsightly appearance will not be approved. All disposal sites must be approved by the Kansas Department of Health and Environment. Material either stockpiled or disposed of in a flood plain would require a Kansas State Board of Agriculture permit. Any material dumped in waters of the United States or wetlands is subject to U.S. Corps. of Engineers permitting regulations. Any material buried or stockpiled beyond approved construction limits would require additional archaeological investigations unless buried in a previously approved borrow location.
6. A saw cut of at least one-half the depth of existing surface courses of one-fourth the depth of the existing total pavement thickness shall be provided at locations where proposed construction abuts an existing surface course or pavement for which partial removal of that surface or pavement is required. Sawed joint to facilitate removal within three (3) feet of existing joints will not be permitted and for such instances the limits of removal shall extend to the existing joint. Such saw cuts will not be paid for directly and this cost shall be considered as subsidiary to the removal of the surface or pavement.
7. All areas disturbed during construction within Reserves and Street R/Ws shall be seeded, mulched, and fertilized as follows unless otherwise noted (Permanent Seeding):

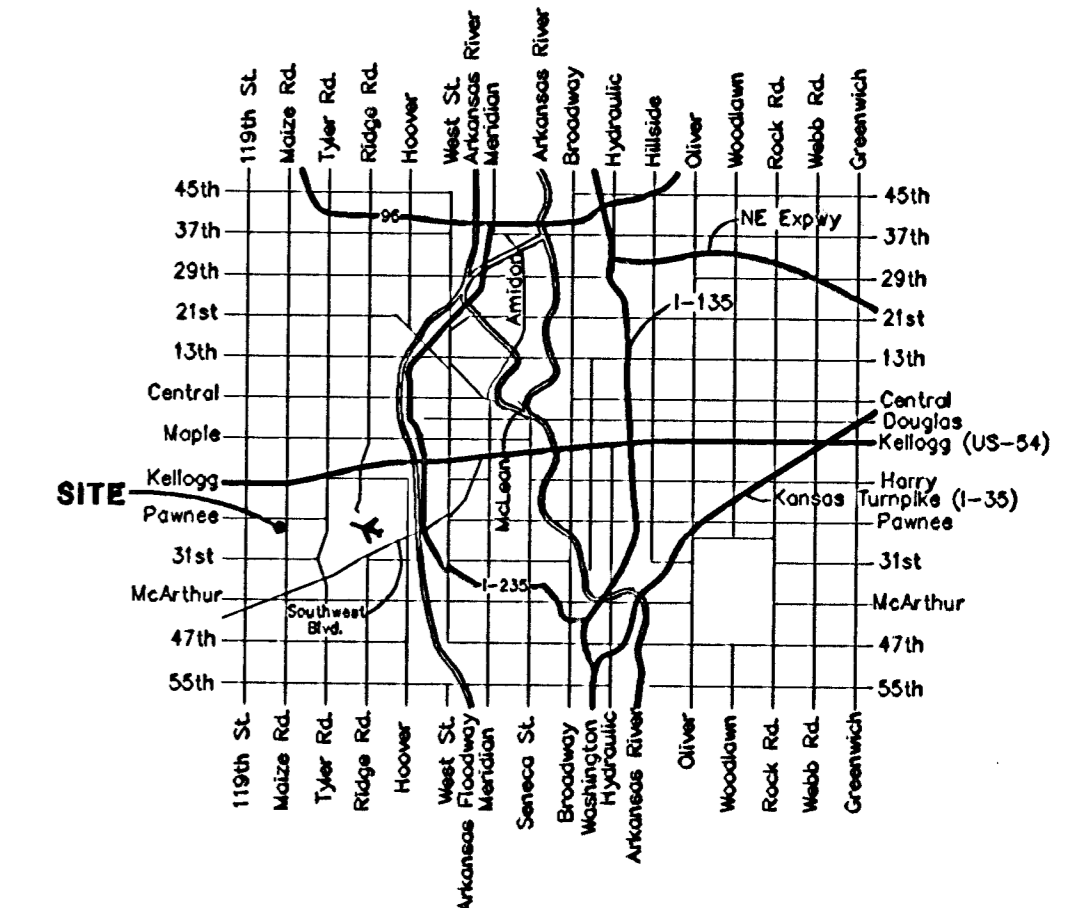
| | |
|-------------|--------------------------------------------------|
| Seed: | Kansas Premium Fescue Blend: 8 lbs./1000 sq. ft. |
| Mulch: | Prairie Hay: 2 tons/acre |
| Fertilizer: | 12-24-12: 850 lbs./acre |

All other areas disturbed during construction shall be seeded and mulched as follows (Temporary Seeding):

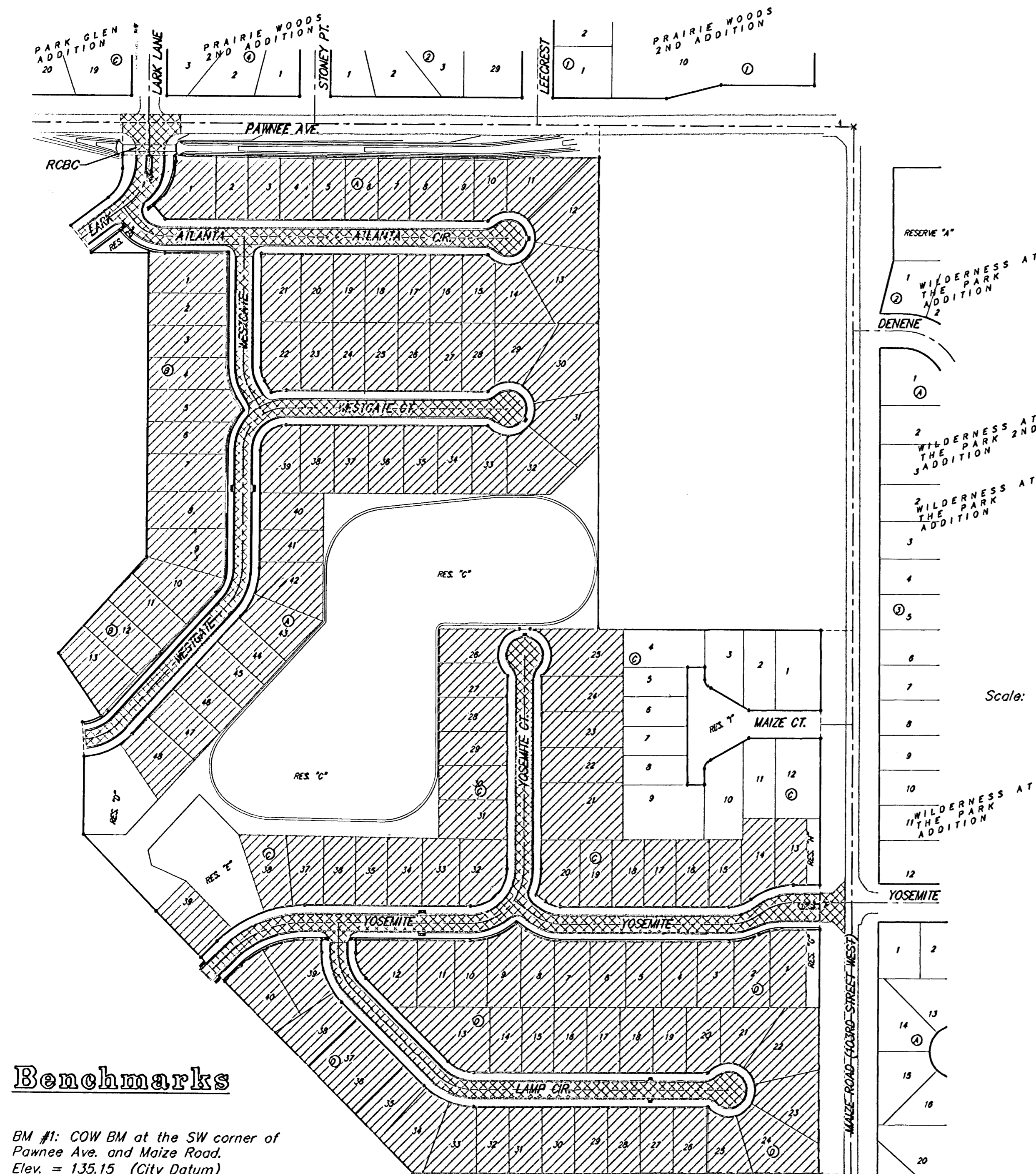
| | |
|--------|--------------------------------|
| Seed: | Rye Grass: 5 lbs./1000 Sq. Ft. |
| Mulch: | Prairie Hay: 2 tons/acre |
8. All existing and proposed erosion control measures including silt fencing, erosion control mat, straw bales, inlet barriers, and const. entrance shall be maintained throughout construction by the contractor and until project is accepted by the City of Wichita. The on-site engineer shall complete weekly reports on the status of erosion control measures. The contractor shall be required to comply with maintenance and/or replacement of erosion control measures as determined by the on-site engineer until project is accepted by City of Wichita. Maintenance and/or replacement of erosion control measures to be paid by L.S. bid item "Erosion Control BMPs."
9. The contractor shall adjust valve boxes as necessary to match proposed grade. Cost to be included in bid item, "Site Clearing & Restoration."
10. The contractor shall complete Part 1 construction prior to Part 2 construction. Contractor shall be required to prioritize Part 1 to be completed as soon as possible. Scheduling between the two parts shall be submitted to the engineer for review prior to beginning of project. Contractor shall bid the project accordingly to successfully complete Part 1 ahead of Part 2.
11. All excess excavation shall remain on-site and shall be spread or stockpiled at an area determined by the engineer.

Sheet Index

| | |
|-----------------------|-------|
| Title Sheet | 1 |
| 35' Pavement Detail | 2 |
| Sign Detail | 3 |
| Miscellaneous Details | 4 |
| Entrance Details | 5 |
| Lark | 6 |
| Atlanta | 7 |
| Atlanta Cir. | 8 |
| Westgate | 9-11 |
| Westgate Ct. | 12 |
| Yosemite | 13-14 |
| Yosemite Ct. | 15 |
| Yosemite | 16-17 |
| Lamp Cir. | 18-19 |
| Sidewalk Plan | 20 |
| Ditch Plan | 21 |
| Ditch Cross Sections | 22 |
| RCBC Details | 23-25 |
| Handrail Details | 26 |
| Erosion Control Plan | 27-28 |
| Soil Erosion BMPs | 29-32 |
| Street X-Sections | 33-47 |
| Copy of Plat | 48 |



Vicinity Map



Benchmarks

BM #1: COW BM at the SW corner of Pawnee Ave. and Maize Road.
Elev. = 135.15 (City Datum)

BM #2: "□" in top of curb on the north side of Yosemite, 65' east of Maize Road.
Elev. = 143.67 (City Datum)

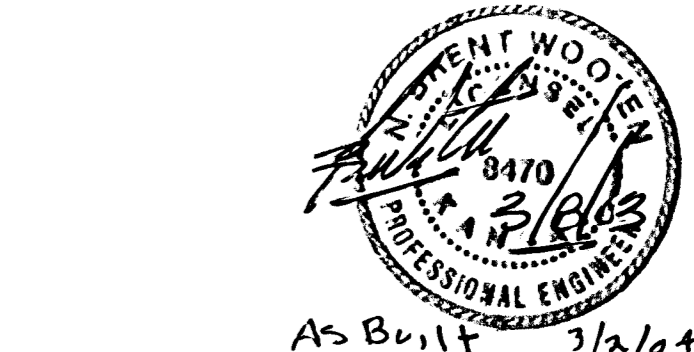
BM #3: COW BM at Shefford on the south side of Pawnee Ave.
Elev. = 145.53 (City Datum)

Project Earthwork Totals
Excavation = 2,845 C.Y.
Loose Fill = 1,507 C.Y.
Compacted Fill = 129 C.Y.

Total Project Length
5,200 L.F. = 0.98 Miles

Benefit District: [Hatched Box]

Proposed Streets: [Cross-hatched Box]



As Built 3/2/04 KK

BAUGHMAN COMPANY P.A.
ENGINEERING, SURVEYING, & PLANNING
316-262-7271 • 315 ELLIS • WICHITA, KANSAS 67211