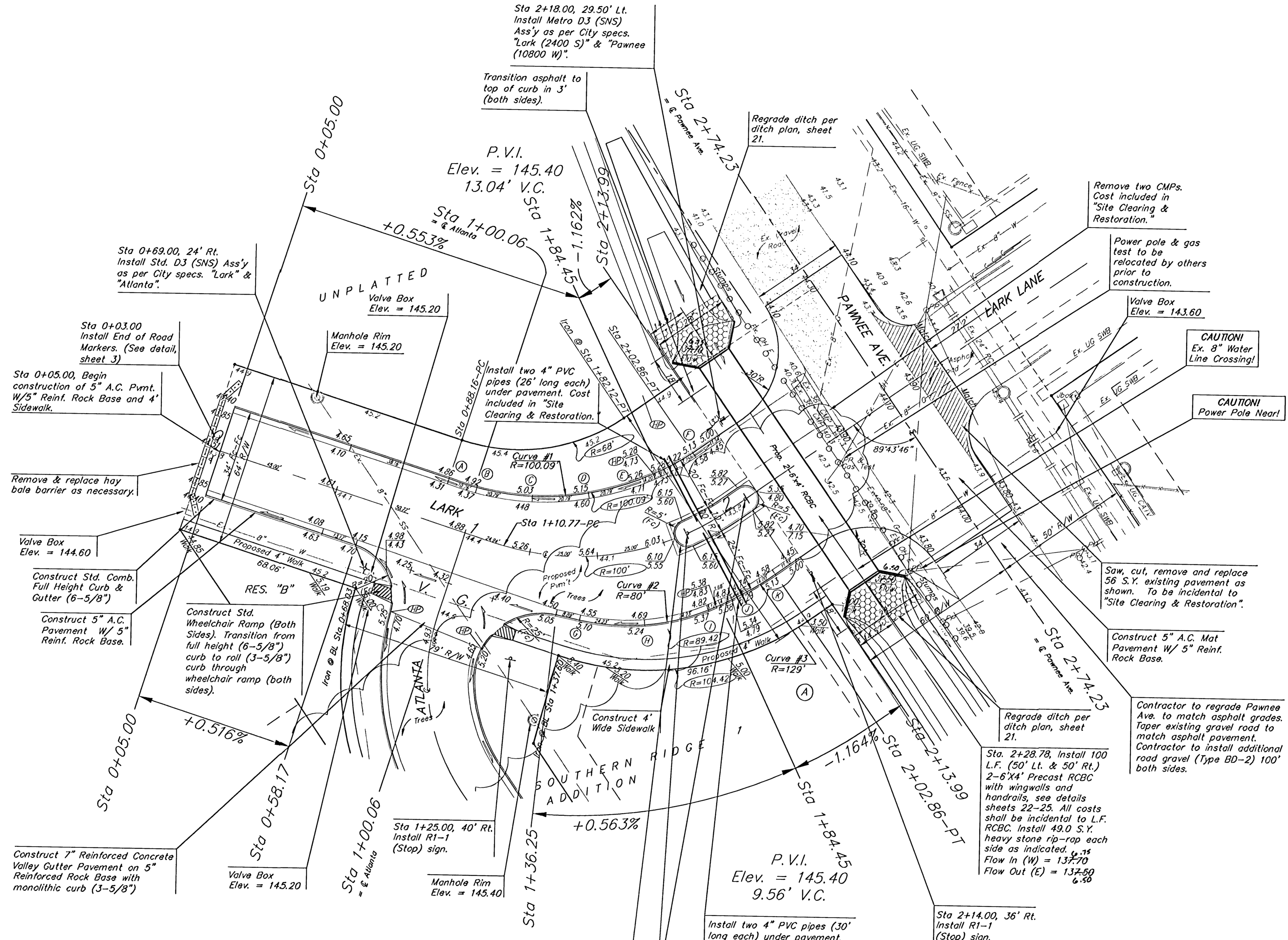
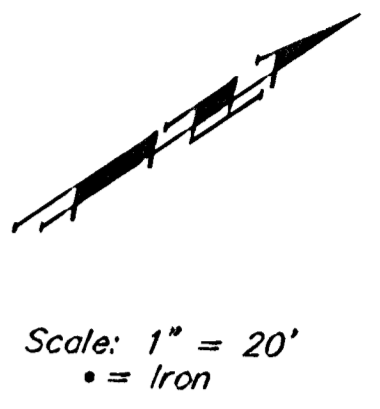


BENCHMARKS:
 BM #1: COW BM at the SW corner of Pawnee Ave. and Maize Road. Elev. = 135.15 (City Datum)
 BM #2: "□" in top of curb on the north side of Yosemite, 65' east of Maize Road. Elev. = 143.67 (City Datum)
 BM #3: COW BM at Shefford on the south side of Pawnee Ave. Elev. = 145.53 (City Datum)



Curve #1
 Curve Data Based on Face of Curb
 Rad. = 100.09' Delta = 53° 45' 37" Tangent = 50.73'
 Arc = 93.92' L.C. = 90.51' Def/Ft. = 17.17215 Min.

Station	Arc	FACE CHORD LENGTHS	Def.	T. Def.
A	-	-	0'00.00"	0'00.00"
B	10.76'	9.89'	3'04.46"	3'04.46"
C	20.79'	19.09'	5'57.01"	9'01.47"
D	20.79'	19.09'	5'57.00"	14'58.47"
E	20.79'	19.09'	5'57.00"	20'55.47"
F	20.79'	19.09'	5'57.01"	26'52.48"

Curve #2
 Curve Data Based on Centerline
 Rad. = 80' Delta = 34° 42' 30" Tangent = 25.00'
 Arc = 48.46' L.C. = 47.72' Def/Ft. = 21.48679 Min.

Station	Arc	FACE CHORD LENGTHS	Def.	T. Def.
G	-	-	0'00.00"	0'00.00"
H	24.23'	21.93'	8'45.37"	8'45.37"
I	24.23'	21.93'	8'45.38"	17'21.75"

Const. Full-Height Low Edge Medial Curb & Gutter. (6-5/8")
 (See Detail, Sheet 5)
 Median Shall Be Filled With Friable Fill Material

Sta. 1+84.45 & 2+09.23
 Install R4-7 (Keep Right) & OM-1 Sign.

Curve #3
 Curve Data Based on Face of Curb
 Rad. = 129' Delta = 12° 26' 17" Tangent = 14.06'
 Arc = 28' L.C. = 27.95' Def/Ft. = 13.32649 Min.

Station	Arc	FACE CHORD LENGTHS	Def.	T. Def.
J	-	-	0'00.00"	0'00.00"
J	14.00'	13.13'	3'06.34"	3'06.34"
K	14.00'	13.13'	3'06.34"	6'13.08"

As Built 3/20/11 KK

SOUTHERN RIDGE ADDITION
LARK
 STA 0+05.00 TO STA 2+74.25

BAUGHMAN COMPANY P.A.
 ENGINEERING, SURVEYING, & PLANNING
 316-282-7271 • 315 ELLIS • WICHITA, KANSAS 67211

PROJECT NUMBER
472-83881

DESIGN NBW DRAWN TMS APPROVED DATE 05/03 SCALE Noted SHEET **6** OF **48**

Remove trees ONLY as necessary for street construction and as approved by Engineer. Cost of removal to be incidental to lump sum bid item "Site Clearing & Restoration".

Remove two CMPs. Cost included in "Site Clearing & Restoration."

Power pole & gas test to be relocated by others prior to construction.

Valve Box Elev. = 143.60

CAUTION! Ex. 8" Water Line Crossing!

CAUTION! Power Pole Near!

Saw, cut, remove and replace 56 S.Y. existing pavement as shown. To be incidental to "Site Clearing & Restoration".

Construct 5" A.C. Mat Pavement W/ 5" Reinf. Rock Base.

Contractor to regrade Pawnee Ave. to match asphalt grades. Taper existing gravel road to match asphalt pavement. Contractor to install additional road gravel (Type BD-2) 100' both sides.

Sta. 2+28.78, Install 100 L.F. (50' Lt. & 50' Rt.) 2-6'x4' Precast RCBC with wingwalls and handrails, see details sheets 22-25. All costs shall be incidental to L.F. RCBC. Install 49.0 S.Y. heavy stone rip-rap each side as indicated.
 Flow In (W) = 137.70
 Flow Out (E) = 137.50

Sta 2+14.00, 36' Rt. Install R1-1 (Stop) sign.

Install two 4" PVC pipes (30' long each) under pavement. Cost included in "Site Clearing & Restoration."

Transition asphalt to top of curb in 3' (both sides).

Regrade ditch per ditch plan, sheet 21.

P.V.I. Elev. = 145.40
 13.04' V.C.

Sta 1+00.06
 +0.553%

Sta 0+69.00, 24' Rt. Install Std. D3 (SNS) Ass'y as per City specs. "Lark" & "Atlanta".

UNPLATTED
 Valve Box Elev. = 145.20

Manhole Rim Elev. = 145.20

Sta 0+03.00 Install End of Road Markers. (See detail, sheet 3)

Sta 0+05.00, Begin construction of 5" A.C. Pmnt. W/5" Reinf. Rock Base and 4' Sidewalk.

Remove & replace hay bale barrier as necessary.

Valve Box Elev. = 144.60

Construct Std. Comb. Full Height Curb & Gutter (6-5/8")

Construct 5" A.C. Pavement W/ 5" Reinf. Rock Base.

Construct Std. Wheelchair Ramp (Both Sides). Transition from full height (6-5/8") curb to roll (3-5/8") curb through wheelchair ramp (both sides).

Construct 7" Reinforced Concrete Valley Gutter Pavement on 5" Reinforced Rock Base with monolithic curb (3-5/8")

Valve Box Elev. = 145.20

Sta 1+25.00, 40' Rt. Install R1-1 (Stop) sign.

Manhole Rim Elev. = 145.40

Sta 1+36.25
 +0.563%

P.V.I. Elev. = 145.40
 9.56' V.C.

Install two 4" PVC pipes (30' long each) under pavement. Cost included in "Site Clearing & Restoration."