

BENCHMARKS:
 BM #1: COW BM at the SW corner of Pawnee Ave. and Maize Road.
 Elev. = 135.15 (City Datum)

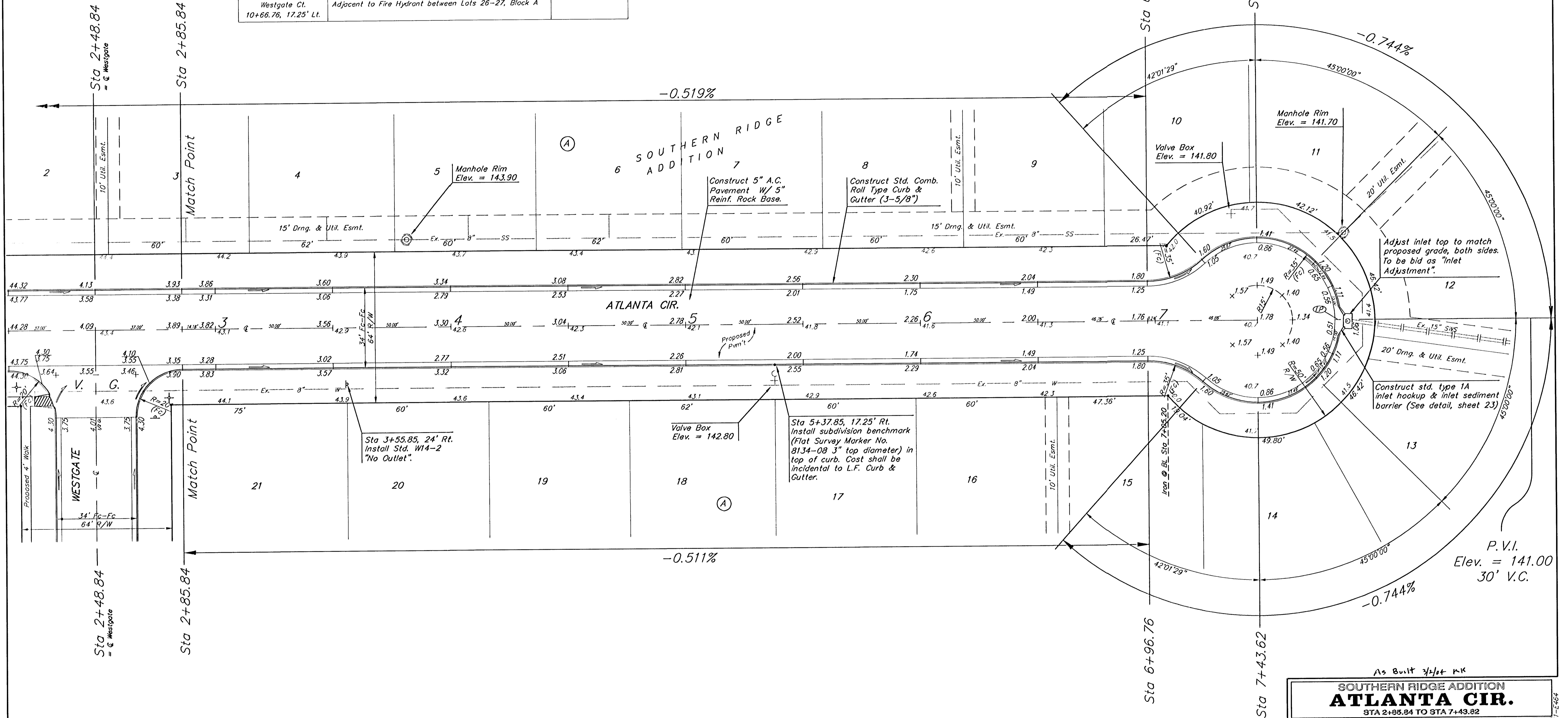
BM #2: "□" in top of curb on the north side of Yosemite, 65' east of Maize Road.
 Elev. = 143.67 (City Datum)

BM #3: COW BM at Shefford on the south side of Pawnee Ave.
 Elev. = 145.53 (City Datum)

Street & Station	Location Description	Elevation
Atlanta 0+35.33, 17.25' Rt.	Adjacent to Fire Hydrant at E. End of S. Curb Return of Lark & Atlanta	
Atlanta Cir. 5+37.85, 17.25' Rt.	Adjacent to Fire Hydrant between Lots 16-17, Block A	
Westgate 0+50.90, 17.25' Lt.	Adjacent to Fire Hydrant at S corner of Lot 13, Block B	
Westgate 7+28.41, 17.25' Lt.	Adjacent to Fire Hydrant at W. End of W. Curb Return of Westgate and Westgate Ct.	
Westgate Ct. 10+66.76, 17.25' Lt.	Adjacent to Fire Hydrant between Lots 26-27, Block A	

Street & Station	Location Description	Elevation
Yosemite Ct. 8+27.74, 17.25' Rt.	Adjacent to Fire Hydrant between Lots 21-22, Block C	
Yosemite 5+67.33, 17.25' Rt.	Adjacent to Fire Hydrant between Lot 1, Block D & Res. G	
Lamp Cir. 0+37.00, 17.25' Rt.	Adjacent to Fire Hydrant at S. End of W. Curb Return & Yosemite & Lamp Cir.	
Lamp Cir. 6+22.48, 17.25' Rt.	Adjacent to Fire Hydrant between Lots 29-30, Block D	

Scale: 1" = 20'
 • = Iron



NOTE: ROLL TYPE CURB & GUTTER TO BE CONSTRUCTED ON THE PAVEMENT SHOWN ON THIS SHEET. TOP OF CURB ELEVATIONS ARE GIVEN FOR FULL HEIGHT CURB.

As Built 3/16/11 KK

SOUTHERN RIDGE ADDITION
ATLANTA CIR.
 STA 2+85.84 TO STA 7+43.82

BAUGHMAN COMPANY P.A.
 ENGINEERING, SURVEYING, & PLANNING
 316-282-7271 • 315 ELLIS • WICHITA, KANSAS 67211

PROJECT NUMBER
472-83881

DESIGN: NBW DRAWN: TMS APPROVED: [Signature] DATE: 05/03 SCALE: Noted

SHEET **8** OF **48**

02-11-5464
 Storage/313