

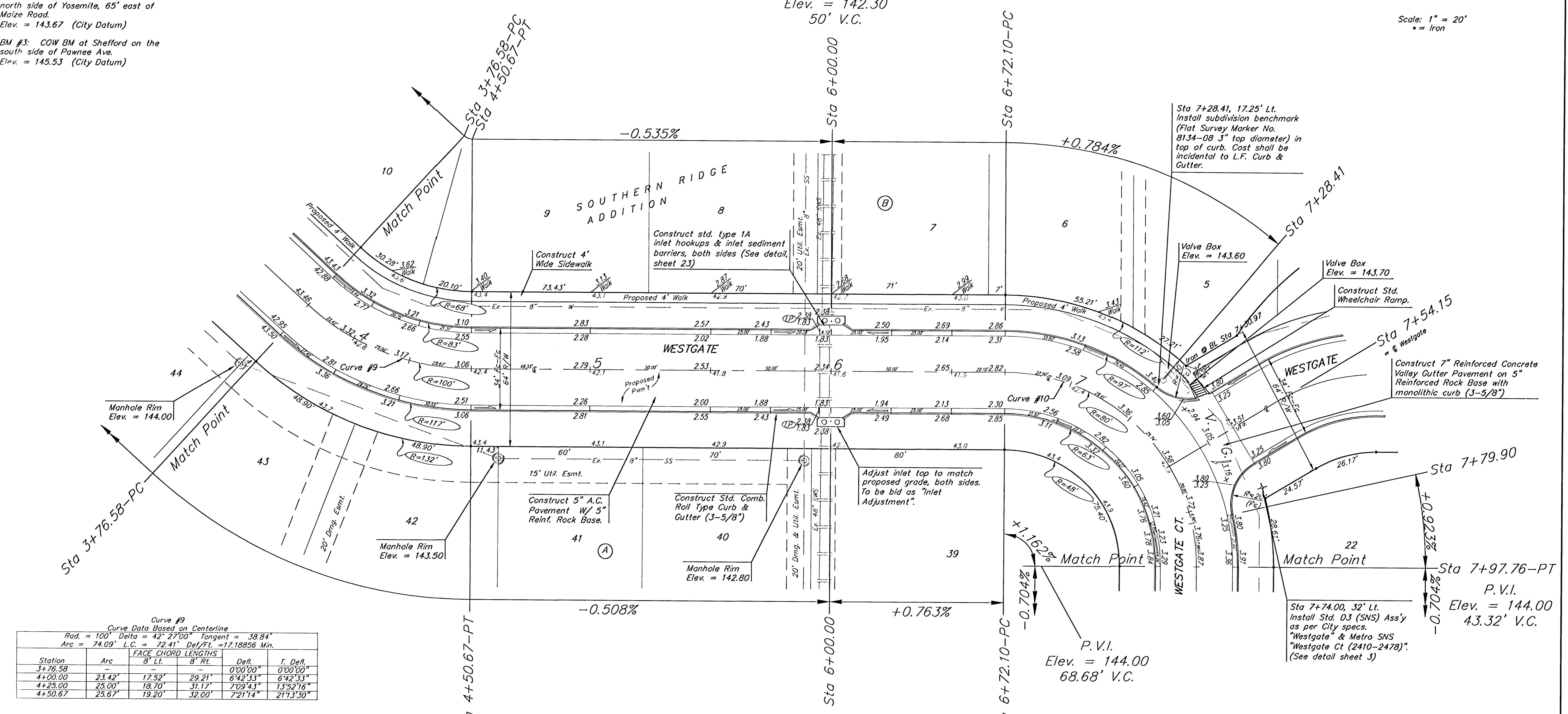
BENCHMARKS:
 BM #1: COW BM at the SW corner of Pawnee Ave. and Maize Road. Elev. = 135.15 (City Datum)

BM #2: "□" in top of curb on the north side of Yosemite, 65' east of Maize Road. Elev. = 143.67 (City Datum)

BM #3: COW BM at Shefford on the south side of Pawnee Ave. Elev. = 145.53 (City Datum)

Scale: 1" = 20'
 = Iron

P.V.I.
 Elev. = 142.30
 50' V.C.



Curve #9
 Curve Data Based on Centerline
 Rad. = 100' Delta = 42° 27' 00" Tangent = 38.84'
 Arc = 74.09' L.C. = 72.41' Def/Fl. = 17.18856 Min.

Station	Arc	FACE CHORD LENGTHS		Defl.	T. Defl.
		8' Lt.	8' Rt.		
3+76.58	-	-	-	0°00'00"	0°00'00"
4+00.00	23.42'	17.52'	29.21'	6°42'33"	6°42'33"
4+25.00	25.00'	18.70'	31.17'	7°09'43"	13°52'16"
4+50.67	25.67'	19.20'	32.00'	7°21'14"	21°13'30"

Curve #10
 Curve Data Based on Centerline
 Rad. = 80' Delta = 90°00'00" Tangent = 80.00'
 Arc = 125.66' L.C. = 113.14' Def/Fl. = 21.48655 Min.

Station	Arc	FACE CHORD LENGTHS		Defl.	T. Defl.
		8' Lt.	8' Rt.		
6+72.10	-	-	-	0°00'00"	0°00'00"
6+75.00	2.90'	1.99'	3.81'	1°02'18"	1°02'18"
7+00.00	25.00'	17.12'	32.68'	8°57'10"	9°59'28"
7+25.00	25.00'	17.12'	32.68'	8°57'10"	18°56'38"
7+28.41	3.41'	2.34'	4.48'	1°13'16"	20°09'54"
7+50.00	21.59'	14.80'	28.25'	7°43'54"	27°53'48"
7+54.15	4.15'	2.85'	5.45'	1°29'10"	29°22'58"
7+75.00	20.85'	14.29'	27.29'	7°27'59"	36°50'58"
7+79.90	4.90'	3.37'	6.43'	1°45'17"	38°36'15"
7+97.76	17.86'	12.25'	23.39'	6°23'45"	45°00'00"

NOTE:
 ROLL TYPE CURB & GUTTER TO BE CONSTRUCTED ON THE PAVEMENT SHOWN ON THIS SHEET. TOP OF CURB ELEVATIONS ARE GIVEN FOR FULL HEIGHT CURB.

As Built 3/16/14 KW

SOUTHERN RIDGE ADDITION
WESTGATE
 STA 3+76.58 TO STA 7+97.76

BAUGHMAN COMPANY P.A.
 ENGINEERING, SURVEYING, & PLANNING
 316-282-7271 • 315 ELLIS • WICHITA, KANSAS 67211

DESIGN	DRAWN	APPROVED	DATE	SCALE	SHEET
NBW	TMS		05/03	Noted	11 OF 48