

BENCHMARKS:
 BM #1: COW BM at the SW corner of
 Pawnee Ave. and Maize Road.
 Elev. = 135.15 (City Datum)

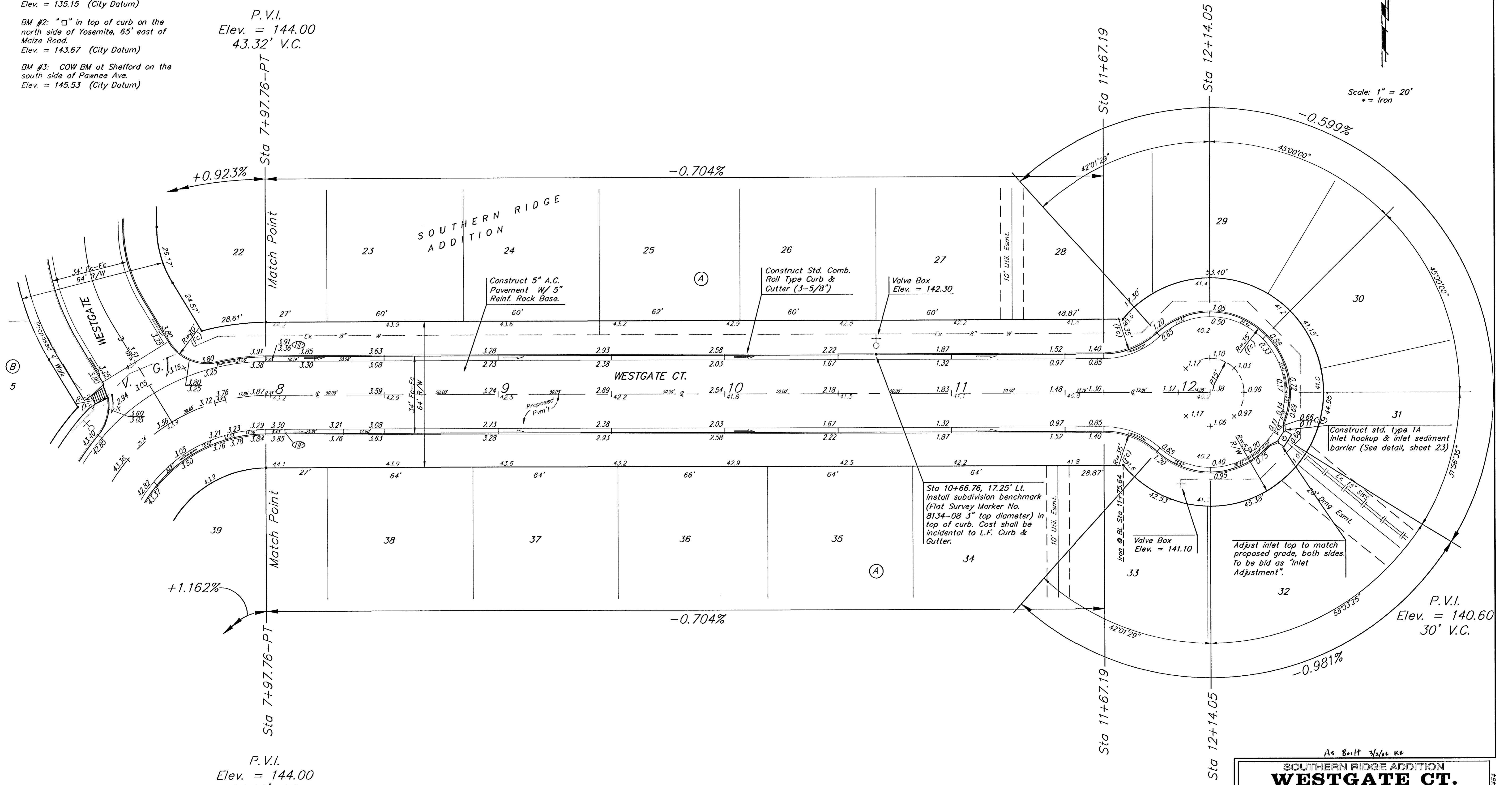
BM #2: "□" in top of curb on the
 north side of Yosemite, 65' east of
 Maize Road.
 Elev. = 143.67 (City Datum)

BM #3: COW BM at Shefford on the
 south side of Pawnee Ave.
 Elev. = 145.53 (City Datum)

P.V.I.
 Elev. = 144.00
 43.32' V.C.

P.V.I.
 Elev. = 144.00
 68.68' V.C.

Scale: 1" = 20'
 • = Iron



NOTE: ROLL TYPE CURB & GUTTER TO BE CONSTRUCTED ON THE PAVEMENT SHOWN ON THIS SHEET. TOP OF CURB ELEVATIONS ARE GIVEN FOR FULL HEIGHT CURB.

As Built 3/2/06 KE

SOUTHERN RIDGE ADDITION
WESTGATE CT.
 STA 7+97.76 TO STA 12+14.05

BAUGHMAN COMPANY P.A.
 ENGINEERING, SURVEYING, & PLANNING
 315-262-7271 • 315 ELLIS • WICHITA, KANSAS 67211

PROJECT NUMBER
472-83881

DESIGN NBW	DRAWN TMS	APPROVED	DATE 05/03	SCALE Noted	SHEET 12 OF 48
---------------	--------------	----------	---------------	----------------	-------------------------

02-11-E464
 5/20/06/5/07