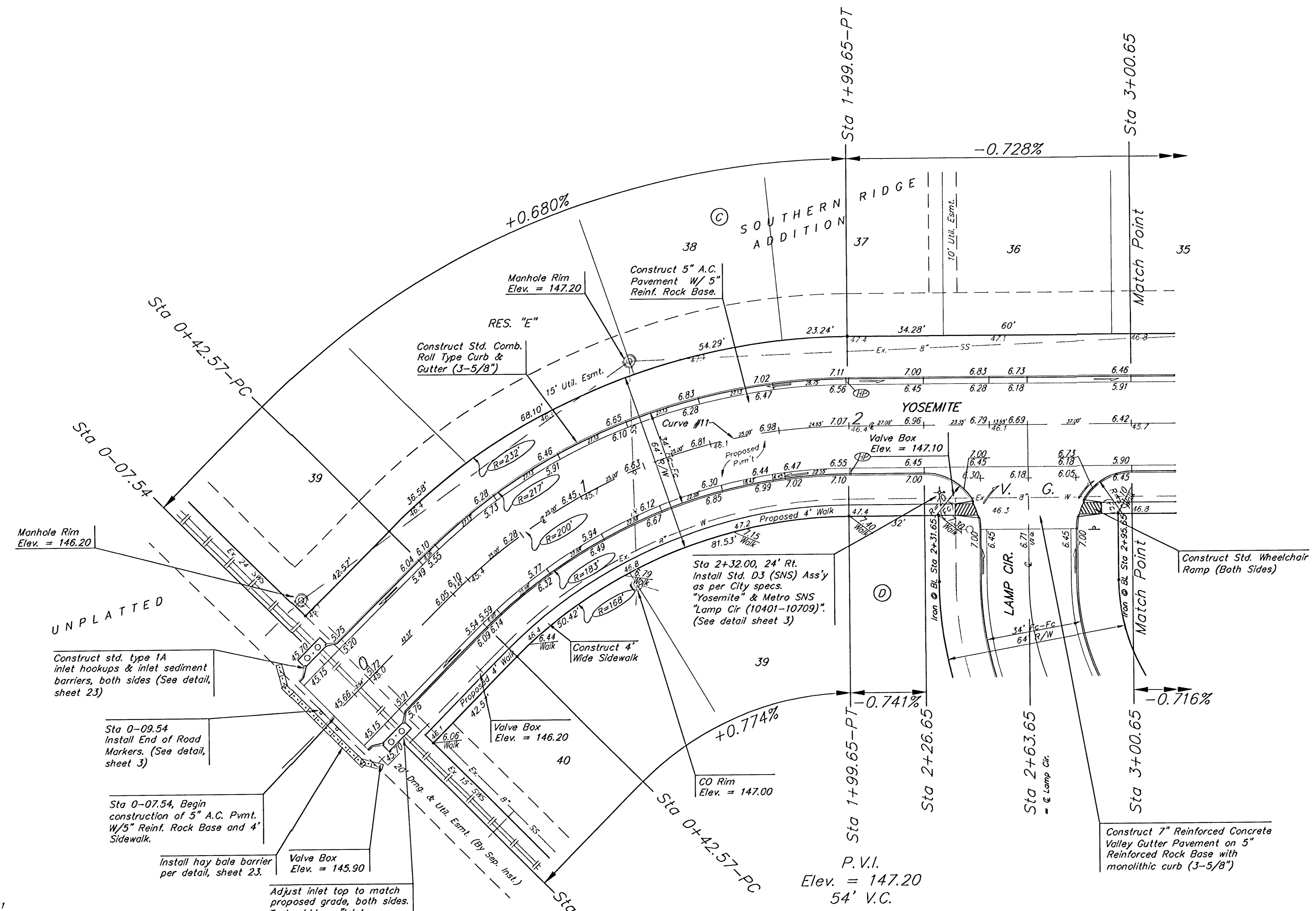
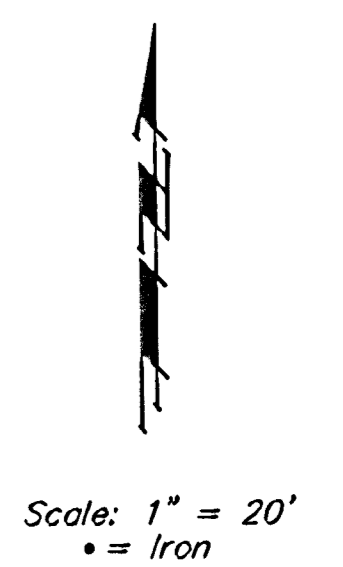


BENCHMARKS:
 BM #1: COW BM at the SW corner of Pawnee Ave. and Maize Road.
 Elev. = 135.15 (City Datum)

BM #2: "□" in top of curb on the north side of Yosemite, 65' east of Maize Road.
 Elev. = 143.67 (City Datum)

BM #3: COW BM at Shefford on the south side of Pawnee Ave.
 Elev. = 145.53 (City Datum)

P.V.I.
 Elev. = 147.20
 53.50' V.C.



Curve #11
 Curve Data Based on Centerline
 Rad. = 200' Delta = 45°00'00" Tangent = 82.84'
 Arc = 157.08' L.C. = 153.07' Def/Ft. = 8.59435 Min.

Station	Arc	FACE CHORD LENGTHS		Defl.	T. Defl.
		B' Lt.	B' Rt.		
0+42.57	-	-	-	0°00'00"	0°00'00"
0+50.00	7.43'	8.36'	6.50'	1°03'51"	1°03'51"
0+75.00	25.00'	28.11'	21.86'	3°34'51"	4°38'43"
1+00.00	25.00'	28.11'	21.86'	3°34'51"	8°13'34"
1+25.00	25.00'	28.11'	21.86'	3°34'51"	11°48'26"
1+50.00	25.00'	28.11'	21.86'	3°34'51"	15°23'17"
1+75.00	25.00'	28.11'	21.86'	3°34'51"	18°58'09"
1+99.65	24.65'	27.71'	21.56'	3°31'51"	22°30'00"

NOTE: ROLL TYPE CURB & GUTTER TO BE CONSTRUCTED ON THE PAVEMENT SHOWN ON THIS SHEET. TOP OF CURB ELEVATIONS ARE GIVEN FOR FULL HEIGHT CURB.

As Built 3/2/24 K4

SOUTHERN RIDGE ADDITION
YOSEMITE
 STA 0-07.54 TO STA 3+00.65

BAUGHMAN COMPANY P.A.
 ENGINEERING, SURVEYING, & PLANNING
 318-282-7271 • 315 ELLIS • WICHITA, KANSAS 67211

PROJECT NUMBER
472-83881

DESIGN NBW DRAW TMS APPROVED DATE 05/03 SCALE Noted

SHEET
 OF
13
 OF
48