

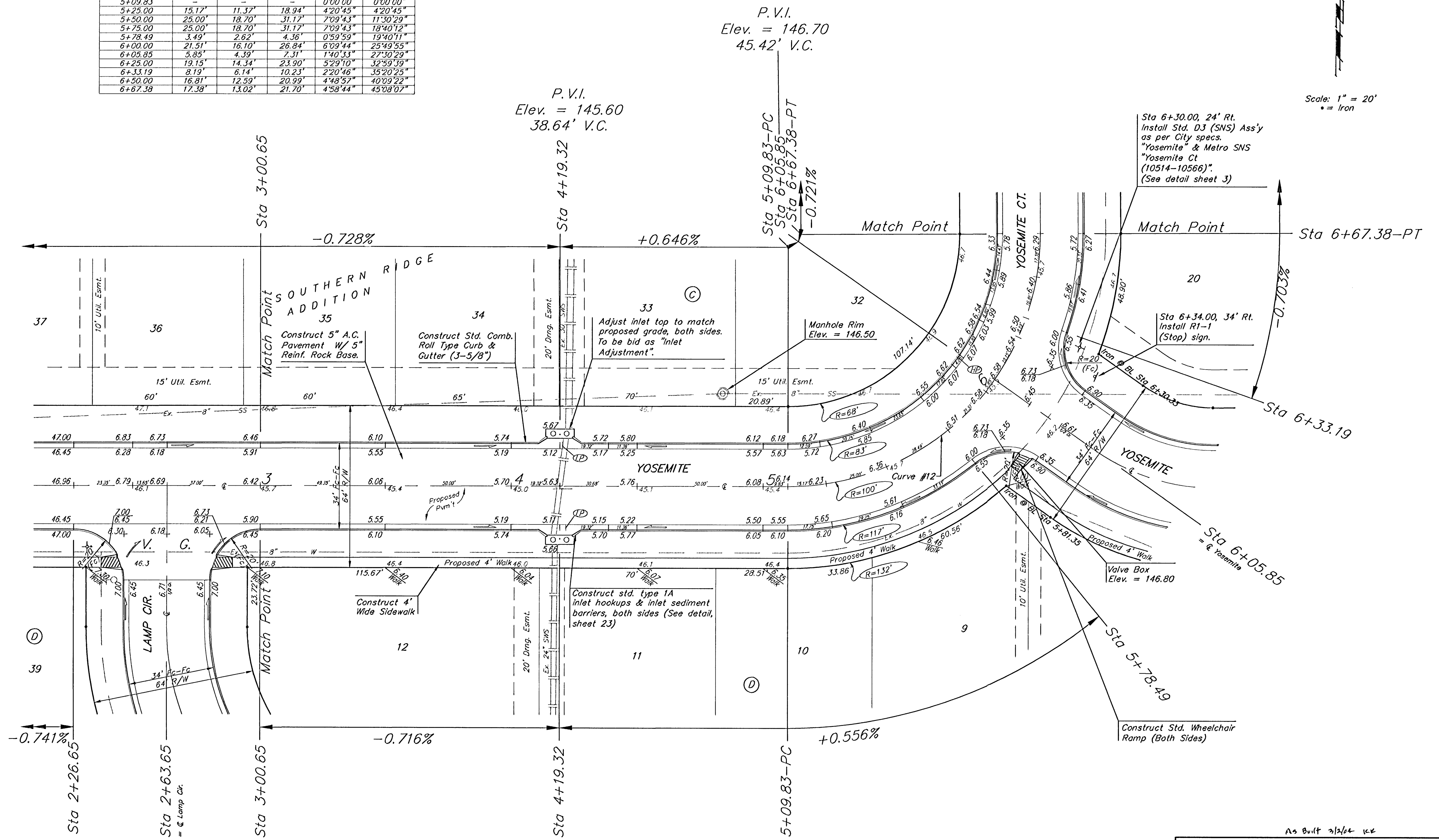
**BENCHMARKS:**  
 BM #1: COW BM at the SW corner of Pawnee Ave. and Maize Road.  
 Elev. = 135.15 (City Datum)

BM #2: "□" in top of curb on the north side of Yosemite, 65' east of Maize Road.  
 Elev. = 143.67 (City Datum)

BM #3: COW BM at Shefford on the south side of Pawnee Ave.  
 Elev. = 145.53 (City Datum)

Curve #12  
 Curve Data Based on Centerline  
 Rad. = 100' Delta = 90° 16' 14" Tangent = 100.47'  
 Arc = 157.55' L.C. = 141.75' Def/Fl. = 17.18893 Min.

Station	Arc	FACE CHORD LENGTHS		Defl.	T. Defl.
		8' Lt.	8' Rt.		
5+09.83	-	-	-	0°00'00"	0°00'00"
5+25.00	15.17'	11.37'	18.94'	4°20'45"	4°20'45"
5+50.00	25.00'	18.70'	31.17'	7°09'43"	11°30'29"
5+75.00	25.00'	18.70'	31.17'	7°09'43"	18°40'12"
5+78.49	3.49'	2.62'	4.36'	0°59'59"	19°40'11"
6+00.00	21.51'	16.10'	26.84'	6°09'44"	25°49'55"
6+05.85	5.85'	4.39'	7.31'	1°40'33"	27°30'29"
6+25.00	19.15'	14.34'	23.90'	5°29'10"	32°59'39"
6+33.19	8.19'	6.14'	10.23'	2°20'46"	35°20'25"
6+50.00	16.81'	12.59'	20.99'	4°48'57"	40°09'22"
6+67.38	17.38'	13.02'	21.70'	4°58'44"	45°08'07"



P.V.I.  
 Elev. = 145.60  
 38.64' V.C.

P.V.I.  
 Elev. = 146.70  
 45.42' V.C.

P.V.I.  
 Elev. = 145.60  
 38.64' V.C.

Sta 6+30.00, 24' Rt.  
 Install Std. D3 (SNS) Ass'y  
 as per City specs.  
 "Yosemite" & Metro SNS  
 "Yosemite Ct  
 (10514-10566)".  
 (See detail sheet 3)

Sta 6+34.00, 34' Rt.  
 Install R1-1  
 (Stop) sign.

Valve Box  
 Elev. = 146.80

Construct Std. Wheelchair  
 Ramp (Both Sides)

NOTE: ROLL TYPE CURB & GUTTER TO BE CONSTRUCTED ON THE PAVEMENT SHOWN ON THIS SHEET. TOP OF CURB ELEVATIONS ARE GIVEN FOR FULL HEIGHT CURB.

As Built 3/26/24 KZ

**SOUTHERN RIDGE ADDITION**  
**YOSEMITE**  
 STA 3+00.85 TO STA 8+87.38

**BAUGHMAN COMPANY P.A.**  
 ENGINEERING, SURVEYING, & PLANNING  
 318-282-7271 • 315 ELLIS • WICHITA, KANSAS 67211

PROJECT NUMBER  
**472-83881**

DESIGN NBW	DRAWN TMS	APPROVED	DATE 05/03	SCALE Noted	SHEET OF <b>14</b> OF <b>48</b>
---------------	--------------	----------	---------------	----------------	---