

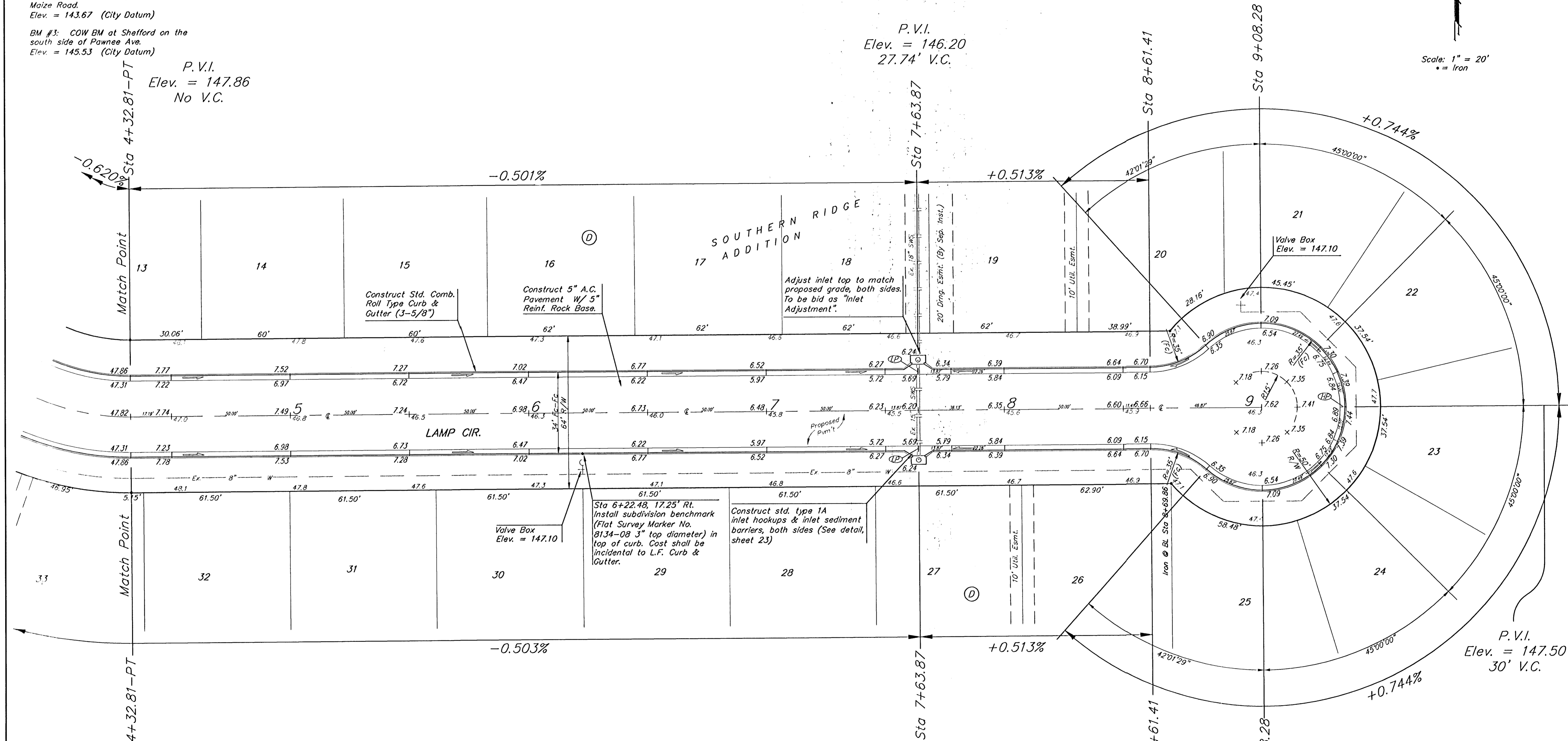
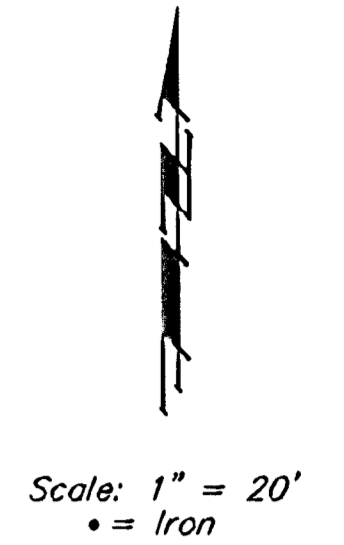
BENCHMARKS:
 BM #1: COW BM at the SW corner of Pawnee Ave. and Maize Road.
 Elev. = 135.15 (City Datum)

BM #2: "□" in top of curb on the north side of Yosemite, 65' east of Maize Road.
 Elev. = 143.67 (City Datum)

BM #3: COW BM at Shefford on the south side of Pawnee Ave.
 Elev. = 145.53 (City Datum)

P.V.I.
 Elev. = 147.86
 No V.C.

P.V.I.
 Elev. = 146.20
 27.74' V.C.



-0.501%

+0.513%

-0.503%

+0.513%

+0.744%

+0.744%

P.V.I.
 Elev. = 147.50
 30' V.C.

NOTE: ROLL TYPE CURB & GUTTER TO BE CONSTRUCTED ON THE PAVEMENT SHOWN ON THIS SHEET. TOP OF CURB ELEVATIONS ARE GIVEN FOR FULL HEIGHT CURB.

As Built 3/2014

SOUTHERN RIDGE ADDITION
LAMP CIR.
 STA 4+32.81 TO STA 9+08.28

BAUGHMAN COMPANY P.A.
 ENGINEERING, SURVEYING, & PLANNING
 316-282-7271 • 315 ELLIS • WICHITA, KANSAS 67211

PROJECT NUMBER
472-63681

DESIGN NBW	DRAWN TMS	APPROVED	DATE 05/03	SCALE Noted	SHEET 19 OF 48
---------------	--------------	----------	---------------	----------------	-------------------------

02-11-E464