

# STREET PAVING FOR SHERIAC to serve SHADOW WOODS ADDITION

## GENERAL NOTES:

- Contractor will be required to provide notice to utility companies a minimum of twenty-four (24) hours prior to any excavation, as follows:  
 Kansas One-Call 687-2470  
 The Contractor must notify the following in case of an emergency:  
 Cox Communications 262-4270  
 Kansas Gas Service 1-888-482-4950  
 Westar Energy 383-8650  
 Aquila Energy 1-800-303-0357  
 Southwestern Bell 268-2245  
 City of Wichita Water Dept. 268-4563  
 City of Wichita Sewer Maint. 268-4024  
 City of Wichita Storm Sewer Maint. 268-4090  
 City of Wichita Traffic Maint. 268-4034  
 Conoco Pipeline Co. 1-800-231-2351  
 Williams Pipeline Co. 529-6600  
 Phillips Pipeline Co. 1-800-766-8230
- Utility service lines, poles, valve boxes, meters, and etcetera are to be adjusted as necessary by others prior to construction unless the plans specifically call for their adjustment by the Contractor or unless the plans specifically identify a utility to be adjusted by its owner during construction. Existing utilities and their location, as shown on the plans, represent the best information obtainable for design. The Contractor will be required to work around existing utilities within the right-of-way which do not conflict with proposed construction.
- Rubble from the removal of miscellaneous structures and excess excavation which is to be wasted shall be disposed of on sites to be provided by the Contractor. These sites shall be approved by the Engineer as to suitability, appearance on site location. Locations, in the opinion of the Engineer, will leave an unsightly appearance will not be approved. All disposal sites must be approved by the Kansas Department of Health and Environment. Material either stockpiled or disposed of in a flood plain would require a Kansas State Board of Agriculture permit. Any material dumped in waters of the United States or wetlands is subject to U.S. Corps of Engineers permitting regulations. Any material buried or stockpiled beyond approved construction limits would require additional archaeological investigations unless buried in a previously approved borrow location.
- Trees and shrubs in public right-of-way which are in direct conflict with proposed new construction shall be removed by the Contractor with the Engineer's approval. Trees and shrubs which are not in direct conflict with proposed new construction shall be saved and protected from damage.
- The Contractor shall give all property owners and/or tenants of developed property abutting the construction of this project a minimum of ten (10) days advance notice prior to start of construction.
- The Contractor shall be responsible for preserving property irons. The Contractor will be required to re-establish any property irons which are damaged or destroyed by his construction operations. Such irons shall be re-established by a licensed land surveyor in accordance with state laws.
- All existing and proposed erosion control measures including silt fencing, erosion control mat, straw bales, inlet barriers, and const. entrance shall be maintained throughout construction by the contractor and until project is accepted by the City of Wichita. The on-site engineer shall complete weekly reports on the status of erosion control measures. The contractor shall be required to comply with maintenance and/or replacement of erosion control measures as determined by the on-site engineer until project is accepted by City of Wichita. Maintenance and/or replacement of erosion control measures to be paid by L.S. bid item "Erosion Control BMP's."
- The contractor shall adjust valve boxes as necessary to match proposed grade. Cost to be included in bid item, "Site Clearing & Restoration."
- All excess excavation shall remain on-site and be stockpiled at a location determined by the engineer.
- All areas disturbed during construction within Reserves and Street R/W's shall be seeded, mulched, and fertilized as follows unless otherwise noted (Permanent Seeding):  
 Seed: Kansas Premium Fescue Blend: 8 lbs./1000 sq. ft.  
 Mulch: Prairie Hay: 2 tons/acre  
 Fertilizer: 12-24-12: 850 lbs./acre  
 All other areas disturbed during construction shall be seeded and mulched as follows (Temporary Seeding):  
 Seed: Rye Grass: 5 lbs./1000 Sq. Ft.  
 Mulch: Prairie Hay: 2 tons/acre  
 All costs associated with seeding, mulching, and fertilizing shall be included in bid item "Project Seeding." All seeding operations shall conform to City of Wichita Standard Specifications.

**Sheriac, from Maple to the north line of Lot 20, Block C.  
Decker, from the east line of Sheriac  
to the north line of Lot 23, Block D.  
Sheriac Cir., from the westerly line of Sheriac  
to and including the cul-de-sac  
Decker Ct., from the east line of Decker  
to and including the cul-de-sac**

CITY OF WICHITA, KANSAS

Neil Cable, P.E. City Engineer

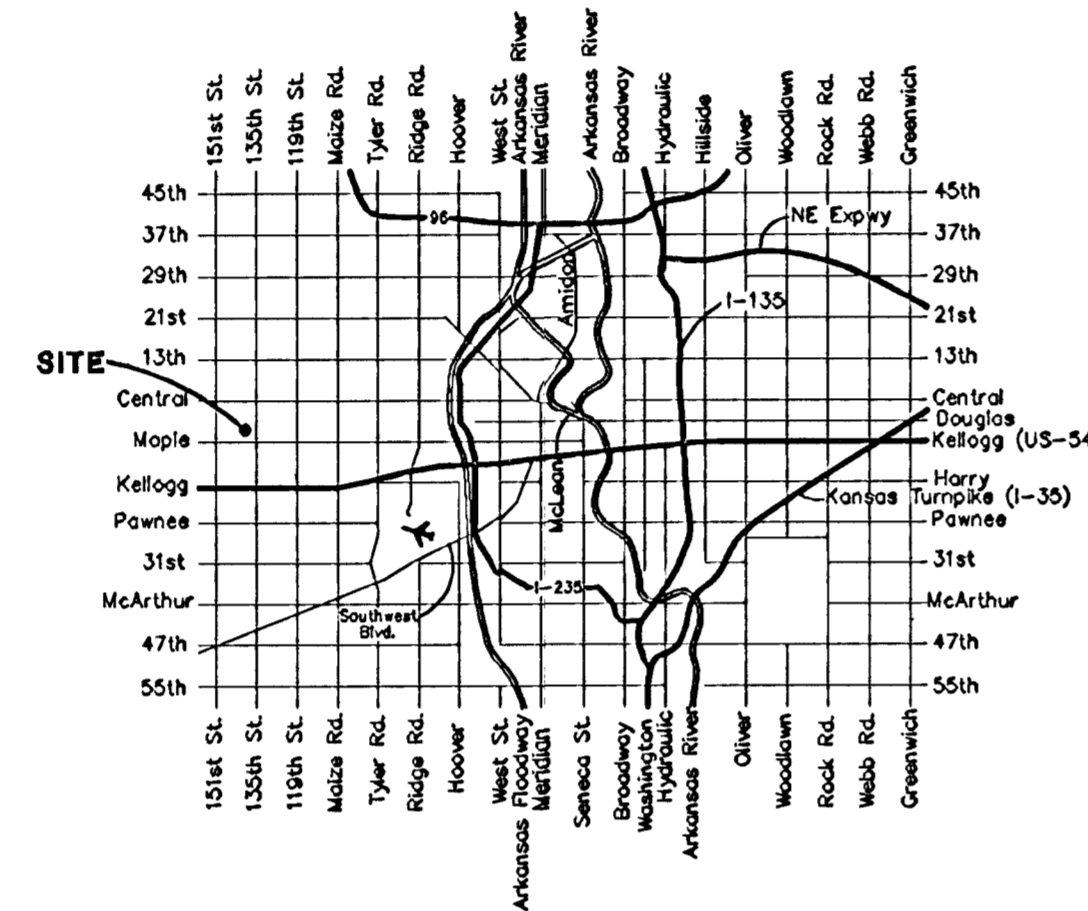
Project Number

**472-83721**

O.C.A. Number:

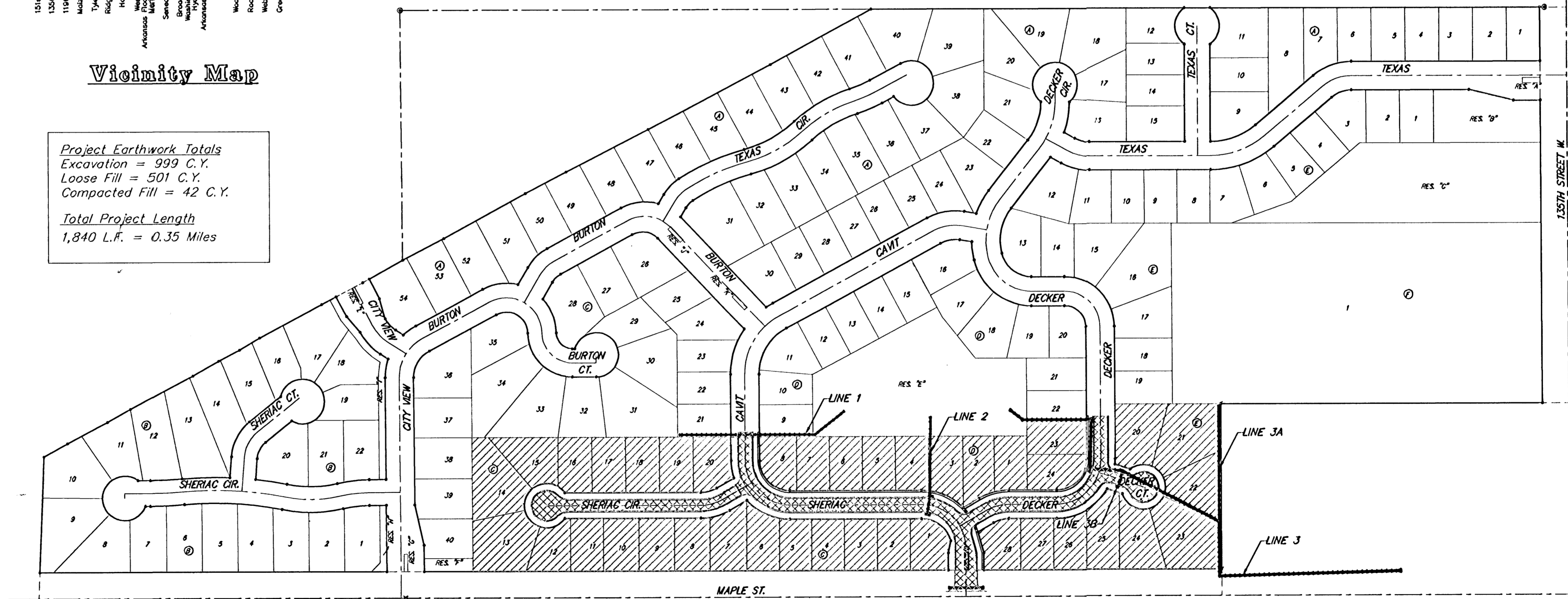
**765794**

I.D. Booked  
6-22-04  
MCG  
C-2645



Vicinity Map

Project Earthwork Totals  
Excavation = 999 C.Y.  
Loose Fill = 501 C.Y.  
Compacted Fill = 42 C.Y.  
  
Total Project Length  
1,840 L.F. = 0.35 Miles



Scale: 1" = 150'



## Benchmarks

RR Spike in N. Face of PP in N. R/W of Maple N. of Nineiron. Elev. = 177.01 (City Datum)

"□" Cut center of north Headwall of RCBC in N. R/W of Maple 570' East of centerline of City View. Elev. = 187.91 (City Datum)

## Sheet Index

Title Sheet	1
35' Pavement Detail	2
29' Pavement Detail	3
Sign Detail	4
Miscellaneous Details	5
Entrance Details	6
Sheriac	7-9
Sheriac Cir.	10
Decker	11
Decker Ct.	12
SWS Line 1	13
SWS Line 2	14
SWS Line 3	15-17
SWS Line 3B	17
SWS Line 3A	18
Std. Type 1A Single Inlet Detail	19
Std. Type 1A Double Inlet Detail	20
Std. Manhole Detail	21
Manhole Ring & Cover Detail	22
Special Yard Inlet Detail	23
Inlet Manhole Detail	24
Erosion Control Plan	25-26
Erosion Control Details	27-30
Street X-Sections	31-36
Copy of Plat	37

Benefit District:

Proposed Streets:



As Built 1/15/04 K.K.

**BAUGHMAN COMPANY P.A.**  
ENGINEERING, SURVEYING, & PLANNING  
318-262-7271 • 315 ELLIS • WICHITA, KANSAS 67211