

Lateral 11, Main 5, Northwest Interceptor Sewer  
SANITARY SEWER IMPROVEMENTS  
to serve

**LIBERTY PARK 3RD ADDITION - PHASE 2C**

CITY OF WICHITA, KANSAS

Gary Janzen, P.E. City Engineer

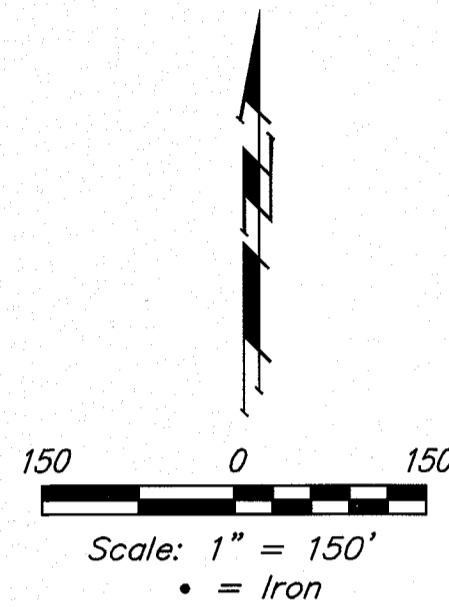
Project Number  
468-84926

O.C.A. Number  
744429

**NOTE: Preliminary release date of 5/18/2017 for connection purposes only.**  
Dutton Construction - Contractor  
J. Brand - City of Wichita, Field Project Engineer  
T. Dvorak - City of Wichita, Inspector  
Stubs & Risers  
Final Acceptance Date: 5/22/2017  
Completion Date: 8/24/2018  
: 10/3/2017 apr

**GENERAL NOTES:**

- Contractor will be required to provide notice to utility companies a minimum of forty-eight (48) hours prior to any excavation, as follows:  
*Kansas One—Call 687-2470*  
The Contractor must notify the following in case of an emergency:  
*Cox Communications 262-4270*  
*Kansas Gas Service 1-888-482-4950*  
*Westar Energy 383-8650*  
*Aquila Energy 1-800-303-0357*  
*AT&T 268-2245*  
*City of Wichita Water Dept. 268-4563*  
*City of Wichita Sewer Maint. 268-4024*  
*City of Wichita Storm Sewer Maint. 268-4090*  
*City of Wichita Traffic Maint. 268-4034*  
*Conoco Phillips Pipeline Co. 1-877-267-2290*  
*Southern Star Pipeline Co. 529-6600*  
*Kinder-Morgan Pipeline Co. 1-888-844-5658*
- Utility service lines, poles, valve boxes, meters, and etcetera are to be adjusted as necessary by others prior to construction unless the plans specifically call for their adjustment by the Contractor or unless the plans specifically identify a utility to be adjusted by its owner during construction. Existing utilities and their location, as shown on the plans, represent the best information obtainable for design. The Contractor will be required to work around existing utilities within the right-of-way which do not conflict with proposed construction.
- Rubble from the removal of miscellaneous structures and excess excavation which is to be wasted shall be disposed of on sites to be provided by the Contractor. These sites shall be approved by the Engineer as to suitability, appearance and site location. Locations, in the opinion of the Engineer, that will leave an unsightly appearance will not be approved. All disposal sites must be approved by the Kansas Department of Health and Environment. Material either stockpiled or disposed of in a flood plain would require a Kansas State Board of Agriculture permit. Any material dumped in waters of the United States or wetlands is subject to U.S. Corps of Engineers permitting regulations. Any material buried or stockpiled beyond approved construction limits would require additional archeological investigations unless buried in a previously approved borrow location.
- Trees and shrubs in public right-of-way which are in direct conflict with proposed new construction shall be removed by the Contractor with the Engineer's approval. Trees and shrubs which are not in direct conflict with proposed new construction shall be saved and protected from damage.
- The Contractor shall give all property owners and/or tenants of developed property abutting the construction of this project a minimum of ten (10) days notice prior to start of construction.
- The Contractor shall be responsible for preserving property irons. The Contractor will be required to re-establish any property irons which are damaged or destroyed by his construction operations. Such irons shall be re-established by a licensed land surveyor in accordance with state laws.
- All existing and proposed erosion control measures including silt fencing, erosion control mat, straw bales, inlet barriers, and const. entrance shall be maintained throughout construction by the contractor and until project is accepted by the City of Wichita. The on-site engineer shall complete weekly reports on the status of erosion control measures. The contractor shall be required to comply with maintenance and/or replacement of erosion control measures as determined by the on-site engineer until project is accepted by City of Wichita. Maintenance and/or replacement of erosion control measures to be paid by L.S. bid item "Maintain Existing BMP's."
- All excess excavation shall remain on-site and shall be stockpiled or spread at a location determined by the engineer.
- The Contractor shall be responsible for maintaining continuous flow of sewage through construction. Contractor's proposed method for maintaining sewage flow shall be approved by the Engineer. Cost of maintaining flow of sewage through construction will not be paid for directly and this cost shall be considered as subsidiary to the other pay items of work.
- All areas disturbed during construction shall be seeded as follows (Temporary Seeding):  
*Seed: Rye grass (PLS)—5 lbs./1000 Sq. Ft.*  
All costs associated with seeding shall be included in bid item "Seeding". All seeding operations shall conform to City of Wichita Standard Specifications.
- The Developer for this project is Paul E. Kelsey (316) 722-1077.

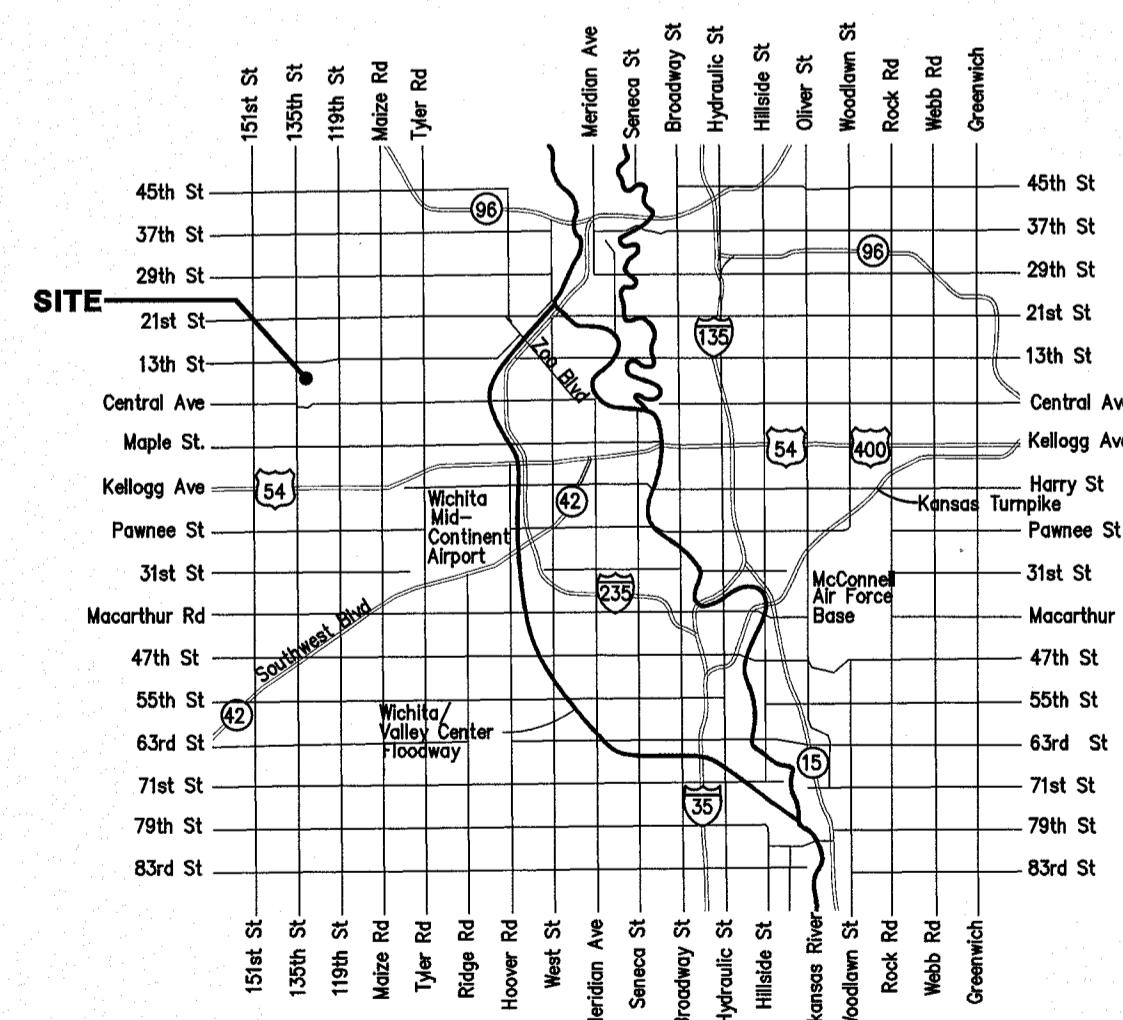


**SHEET INDEX**

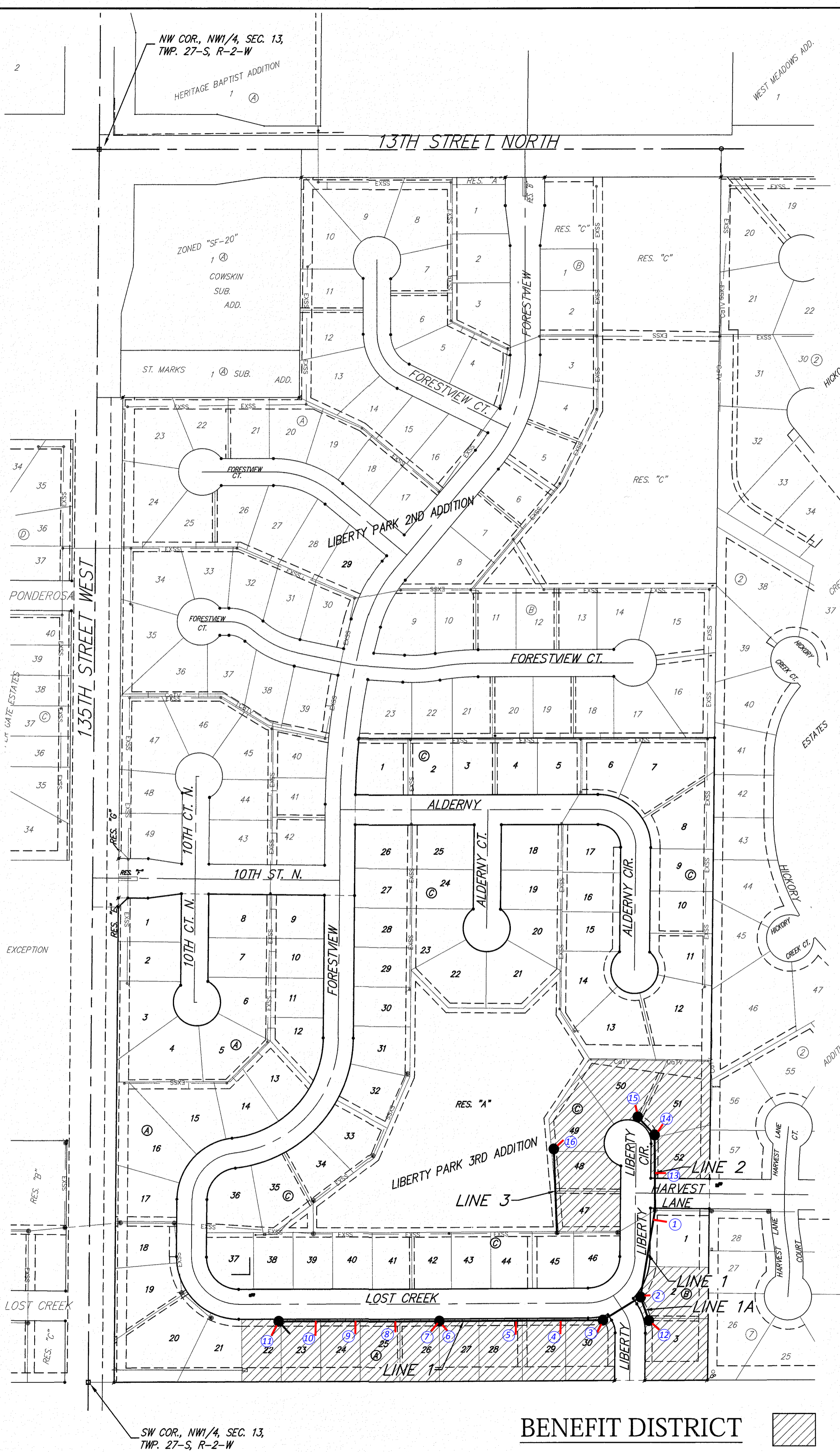
Title Sheet	1
Line 1 & Line 1A	2
Line 2, & Line 3	3
Erosion Control Plan	4
Erosion Control BMP Details	5-9
Standard Manhole Detail	10
Ring & Cover Detail	11
Vertical Riser Detail	12
Coordinate Sheet	13
Copy of Plat	14

**BENCHMARKS**

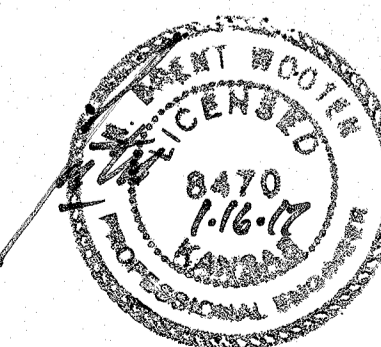
- "□" Cut in top of curb 10' west of end of existing pavement adjacent to Lot 37, Block C, Liberty Park 3rd Addition  
Elev. = 168.20 (City Datum)
- "□" Cut in top of curb 10' east of end of existing pavement adjacent to Lot 52, Block C, Liberty Park 3rd Addition  
Elev. = 164.21 (City Datum)
- C.O.W. Benchmark Disk. 56' E and 55' N of  $\odot$  135th St. W. & 13th St. N.  
Elev. = 167.83 (City Datum)
- C.O.W. Benchmark Disk. 1/2 mile south of 13th St. 39' east of  $\odot$  135th St. 18' south of hedge row.  
Elev. = 159.71 (City Datum)



Vicinity Map

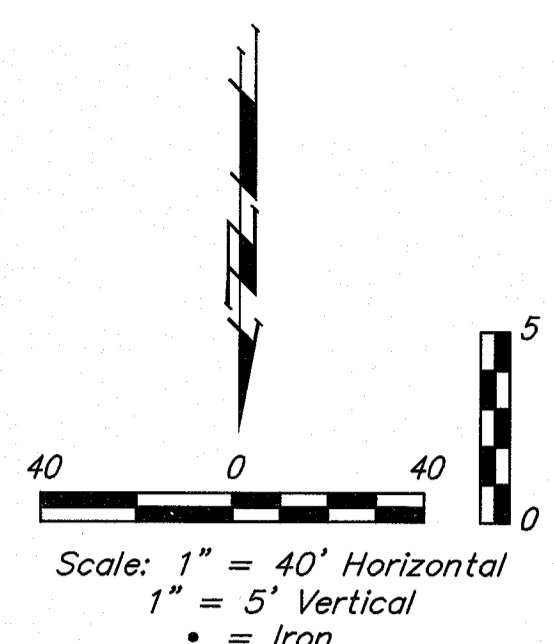
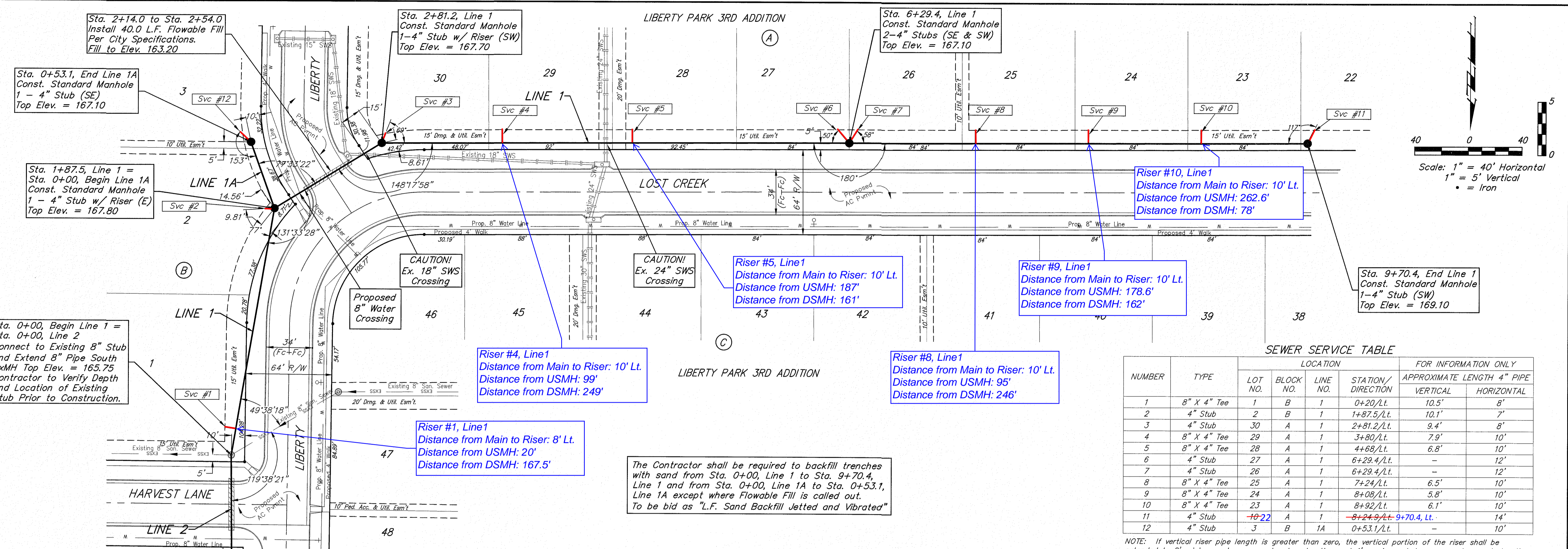


BENEFIT DISTRICT



E:\Projects\Liberty Park 3rd\_04-03-P304\Engineering\Phase 2C\SS\_155 PLANS.dwg  
Baughman Company, P.A. 315 Ellis St. Wichita, KS 67211 P 316-262-7271 F 316-262-0145  
ENGINEERING | SURVEYING | PLANNING | LANDSCAPE ARCHITECTURE

**BENCHMARKS:**  
 "□" Cut in top of curb 10' west of end of existing pavement adjacent to Lot 52, Block C, Liberty Park 3rd Addition  
 Elev. = 168.20 (City Datum)  
 "□" Cut in top of curb 10' east of end of existing pavement adjacent to Lot 52, Block C, Liberty Park 3rd Addition  
 Elev. = 164.21 (City Datum)  
 C.O.W. Benchmark Disk, 56" E and 55" N of @ 135th St. W. & 13th St. N.  
 Elev. = 167.83 (City Datum)  
 C.O.W. Benchmark Disk, 1/2 mile south of 13th St. 39' east of @ 135th St. 18' south of hedge row.  
 Elev. = 159.71 (City Datum)

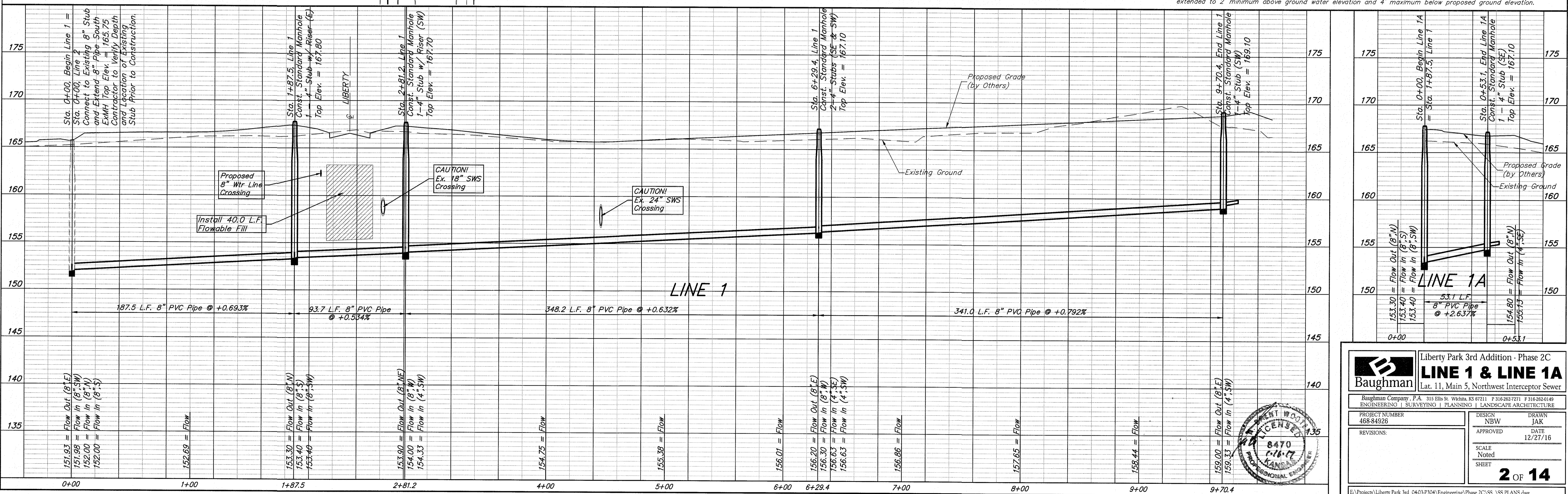


**SEWER SERVICE TABLE**

NUMBER	TYPE	LOCATION			FOR INFORMATION ONLY	
		LOT NO.	BLOCK NO.	LINE NO.	STATION/DIRECTION	APPROXIMATE LENGTH 4" PIPE
					VERTICAL	HORIZONTAL
1	8" X 4" Tee	1	B	1	0+20/Lt.	10.5' 8'
2	4" Stub	2	B	1	1+87.5/Lt.	10.1' 7'
3	4" Stub	30	A	1	2+81.2/Lt.	9.4' 8'
4	8" X 4" Tee	29	A	1	3+80/Lt.	7.9' 10'
5	8" X 4" Tee	28	A	1	4+68/Lt.	6.8' 10'
6	4" Stub	27	A	1	6+29.4/Lt.	- 12'
7	4" Stub	26	A	1	6+29.4/Lt.	- 12'
8	8" X 4" Tee	25	A	1	7+24/Lt.	6.5' 10'
9	8" X 4" Tee	24	A	1	8+08/Lt.	5.8' 10'
10	8" X 4" Tee	23	A	1	8+92/Lt.	6.1' 10'
11	4" Stub	10-22	A	1	8+24.9/Lt-9+70.4, Lt.	- 14'
12	4" Stub	3	B	1A	0+53.1/Lt.	- 10'

NOTE: If vertical riser pipe length is greater than zero, the vertical portion of the riser shall be extended to 2' minimum above ground water elevation and 4' maximum below proposed ground elevation.

The Contractor shall be required to backfill trenches with sand from Sta. 0+00, Line 1 to Sta. 9+70.4, Line 1 and from Sta. 0+00, Line 1A to Sta. 0+53.1, Line 1A except where Flowable Fill is called out. To be bid as "L.F. Sand Backfill Jetted and Vibrated"



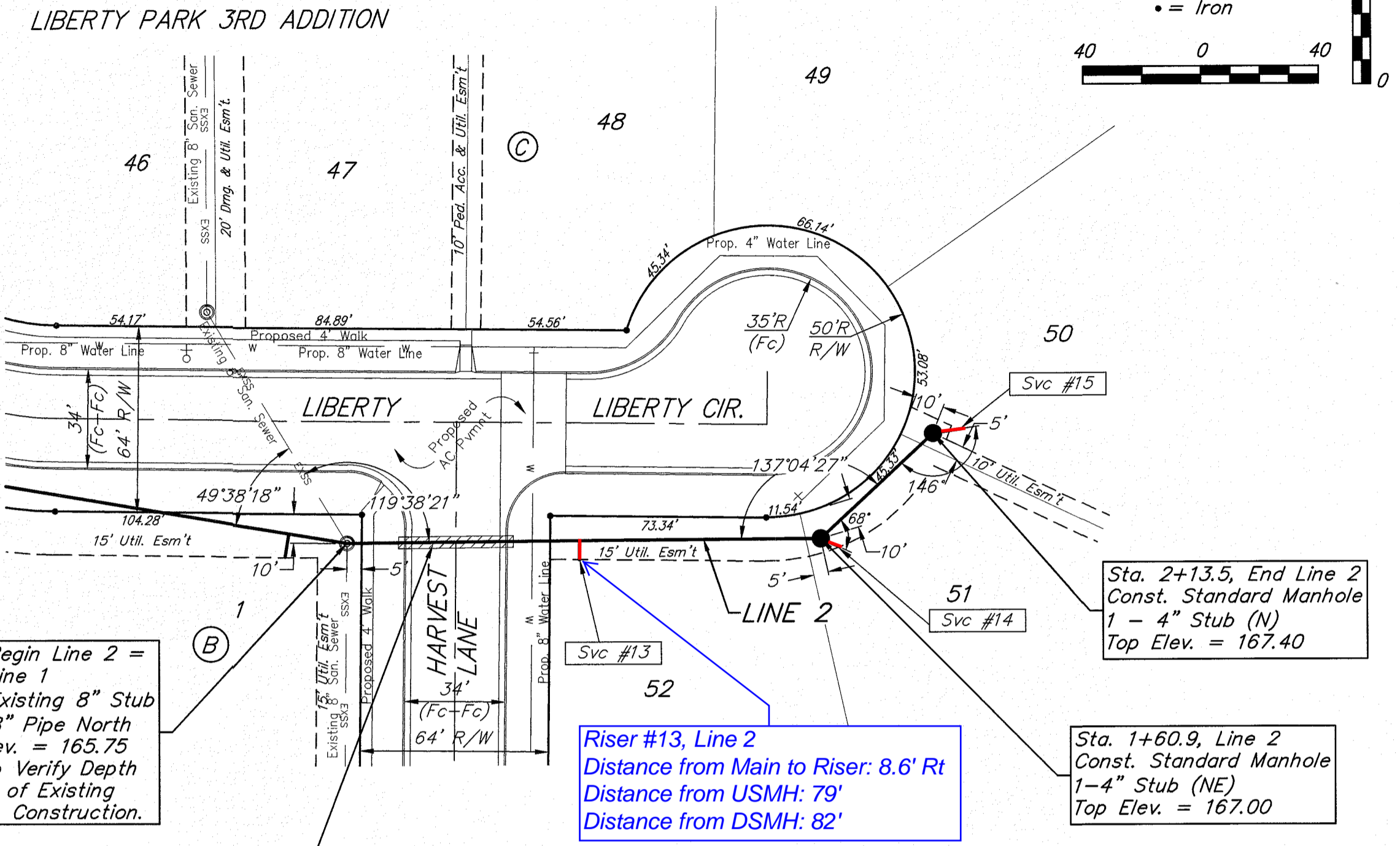
**Liberty Park 3rd Addition - Phase 2C**  
**LINE 1 & LINE 1A**  
 Lat. 11, Main 5, Northwest Interceptor Sewer

Baughman Company, P.A. 315 Ellis St. Wichita, KS 67211 P 316-282-7271 F 316-282-0149  
 ENGINEERING | SURVEYING | PLANNING | LANDSCAPE ARCHITECTURE

PROJECT NUMBER: 468-84926  
 DESIGNER: NBW  
 DRAWN: JAK  
 APPROVED: DATE 12/27/16  
 SCALE: Noted  
 SHEET: 2 OF 14

Professional Engineer Seal: 8470, License No. 1617, State of Kansas

**BENCHMARKS:**  
 "□" Cut in top of curb 10' west of end of existing pavement adjacent to Lot 37, Block C, Liberty Park 3rd Addition  
 Elev. = 168.20 (City Datum)  
 "□" Cut in top of curb 10' east of end of existing pavement adjacent to Lot 52, Block C, Liberty Park 3rd Addition  
 Elev. = 164.21 (City Datum)  
 C.O.W. Benchmark Disk, 56' E and 55' N of  $\odot$  135th St. W. & 13th St. N.  
 Elev. = 167.83 (City Datum)  
 C.O.W. Benchmark Disk, 1/2 mile south of 13th St. 39' east of  $\odot$  135th St. 18' south of hedge row.  
 Elev. = 159.71 (City Datum)



Sta. 0+00, Begin Line 2 = Sta. 0+00, Line 1  
 Connect to Existing 8" Stub and Extend 8" Pipe North ExMH Top Elev. = 165.75  
 Contractor to Verify Depth and Location of Existing Stub Prior to Construction.

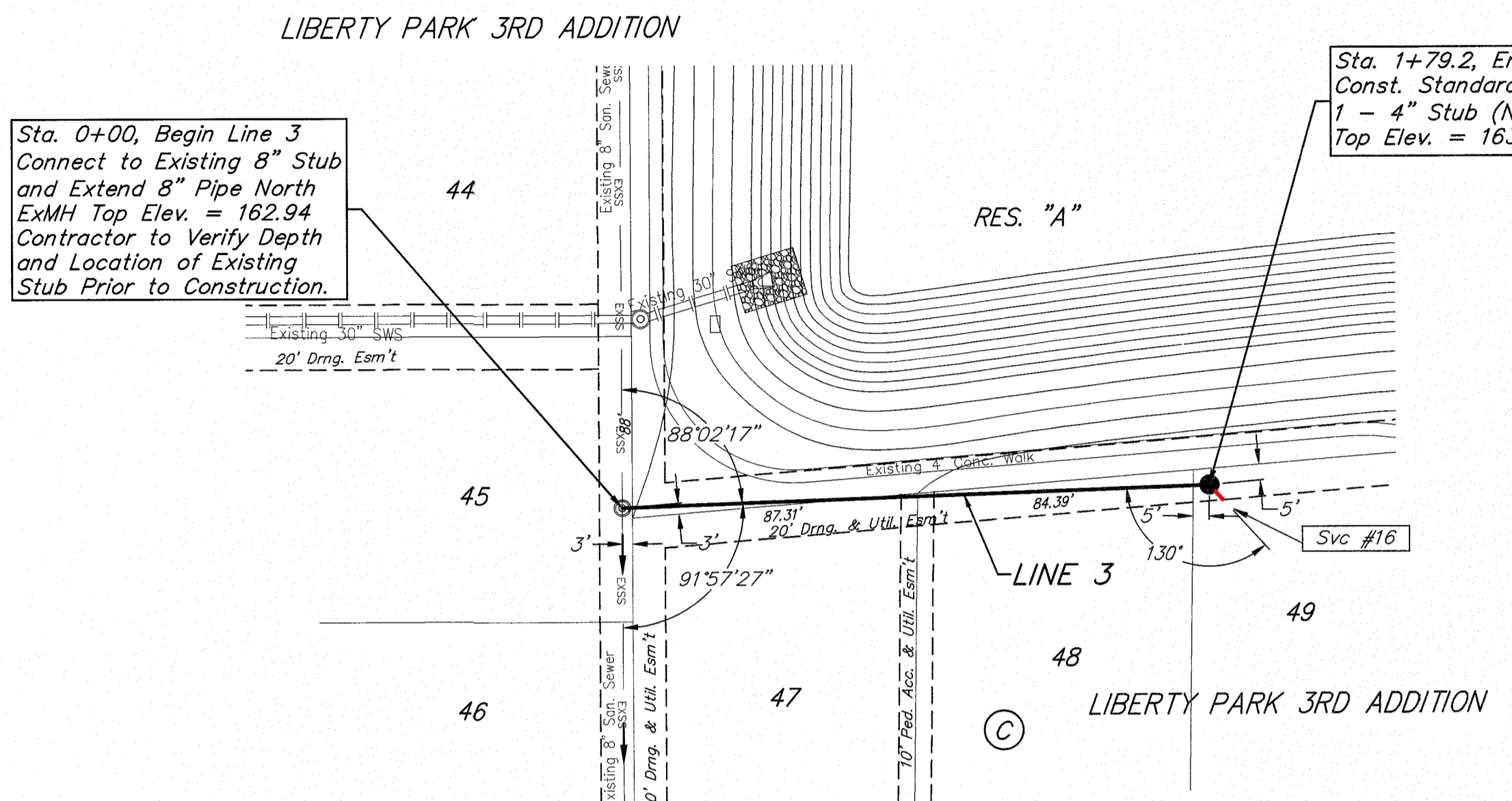
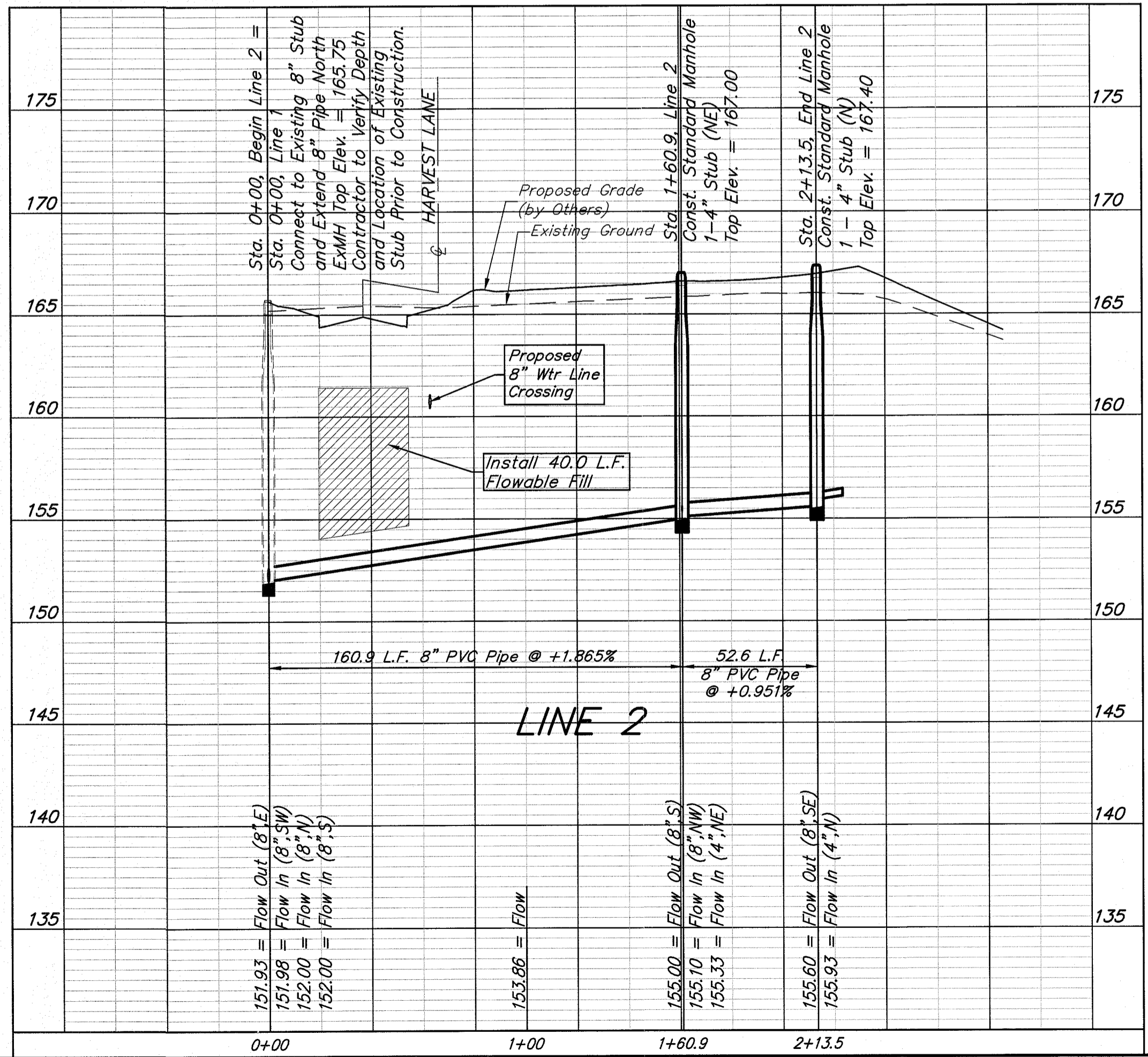
Riser #13, Line 2  
 Distance from Main to Riser: 8.6' Rt  
 Distance from USMH: 79'  
 Distance from DSMH: 82'

Sta. 2+13.5, End Line 2  
 Const. Standard Manhole 1-4" Stub (N)  
 Top Elev. = 167.40

Sta. 1+60.9, Line 2  
 Const. Standard Manhole 1-4" Stub (NE)  
 Top Elev. = 167.00

Sta. 0+17.0 to Sta. 0+57.0  
 Install 40.0 L.F. Flowable Fill Per City Specifications.  
 Fill to Elev. 161.40

The Contractor shall be required to backfill trenches with sand from Sta. 0+57.0, Line 2 to Sta. 2+13.5, Line 1. To be bid as "L.F. Sand Backfill Jetted and Vibrated"



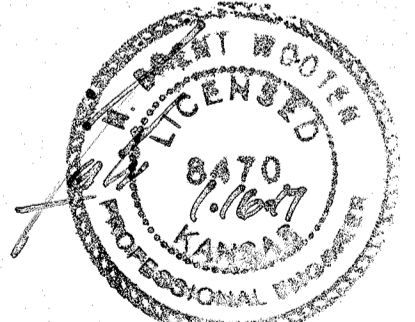
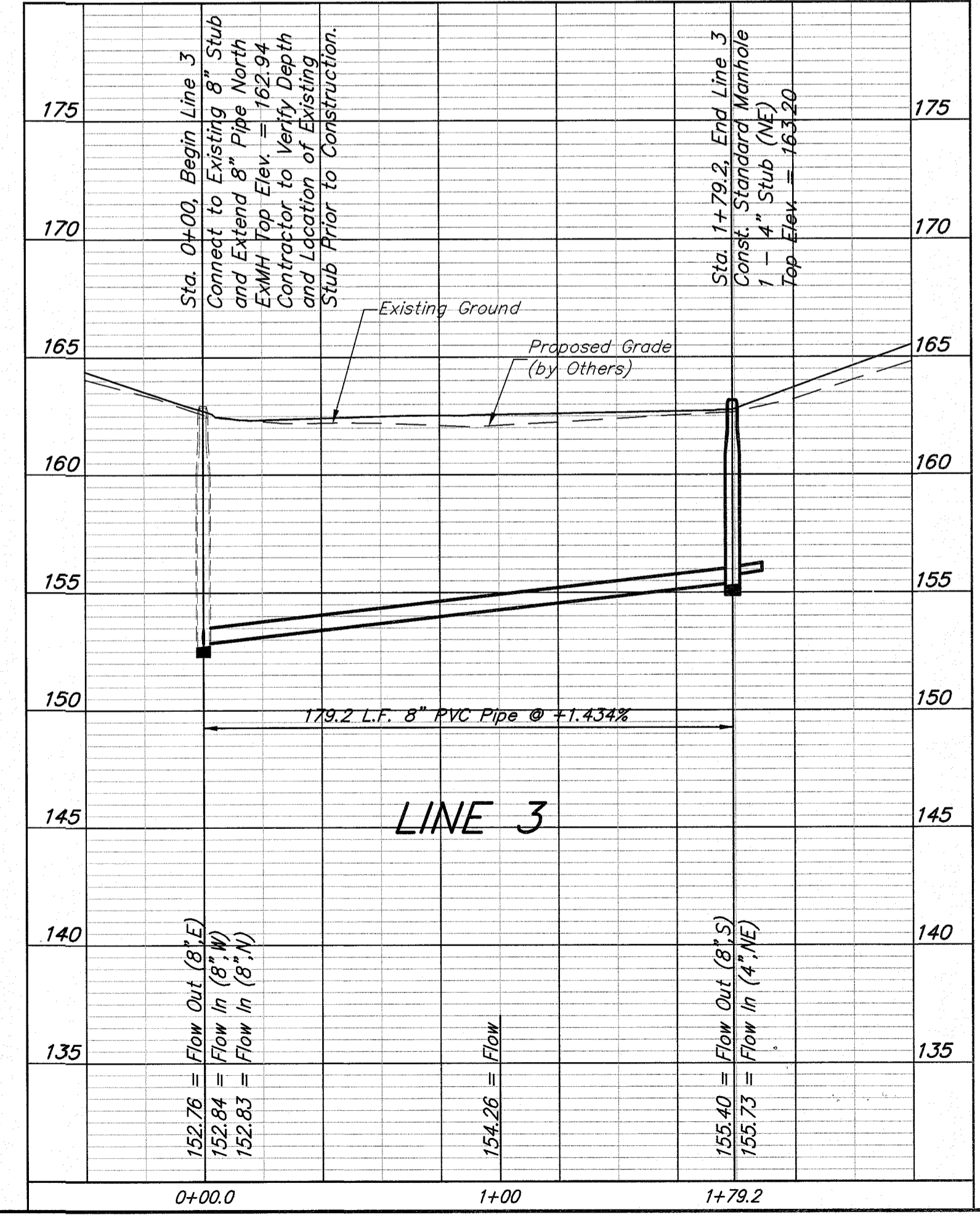
Sta. 0+00, Begin Line 3  
 Connect to Existing 8" Stub and Extend 8" Pipe North ExMH Top Elev. = 162.94  
 Contractor to Verify Depth and Location of Existing Stub Prior to Construction.

Sta. 1+79.2, End Line 3  
 Const. Standard Manhole 1-4" Stub (NE)  
 Top Elev. = 163.20

SEWER SERVICE TABLE

NUMBER	TYPE	LOCATION				FOR INFORMATION ONLY	
		LOT NO.	BLOCK NO.	LINE NO.	STATION/DIRECTION	APPROXIMATE LENGTH 4" PIPE	
						VERTICAL	HORIZONTAL
13	8" X 4" Tee	52	C	2	0+79/Rt.	8.6'	6'
14	4" Stub	51	C	2	1+60.9/Rt.	-	7'
15	4" Stub	50	C	2	2+13.5/Rt.	-	10'
16	4" Stub	49	C	3	1+79.2/Rt.	-	10'

NOTE: If vertical riser pipe length is greater than zero, the vertical portion of the riser shall be extended to 2' minimum above ground water elevation and 4' maximum below proposed ground elevation.



**Baughman** Liberty Park 3rd Addition - Phase 2C  
**LINE 2 & LINE 3**  
 Lat. 11, Main 5, Northwest Interceptor Sewer

PROJECT NUMBER: 468-84926  
 DESIGN: NBW  
 DRAWN: JAK  
 APPROVED: [Signature]  
 DATE: 12/21/16

REVISIONS:

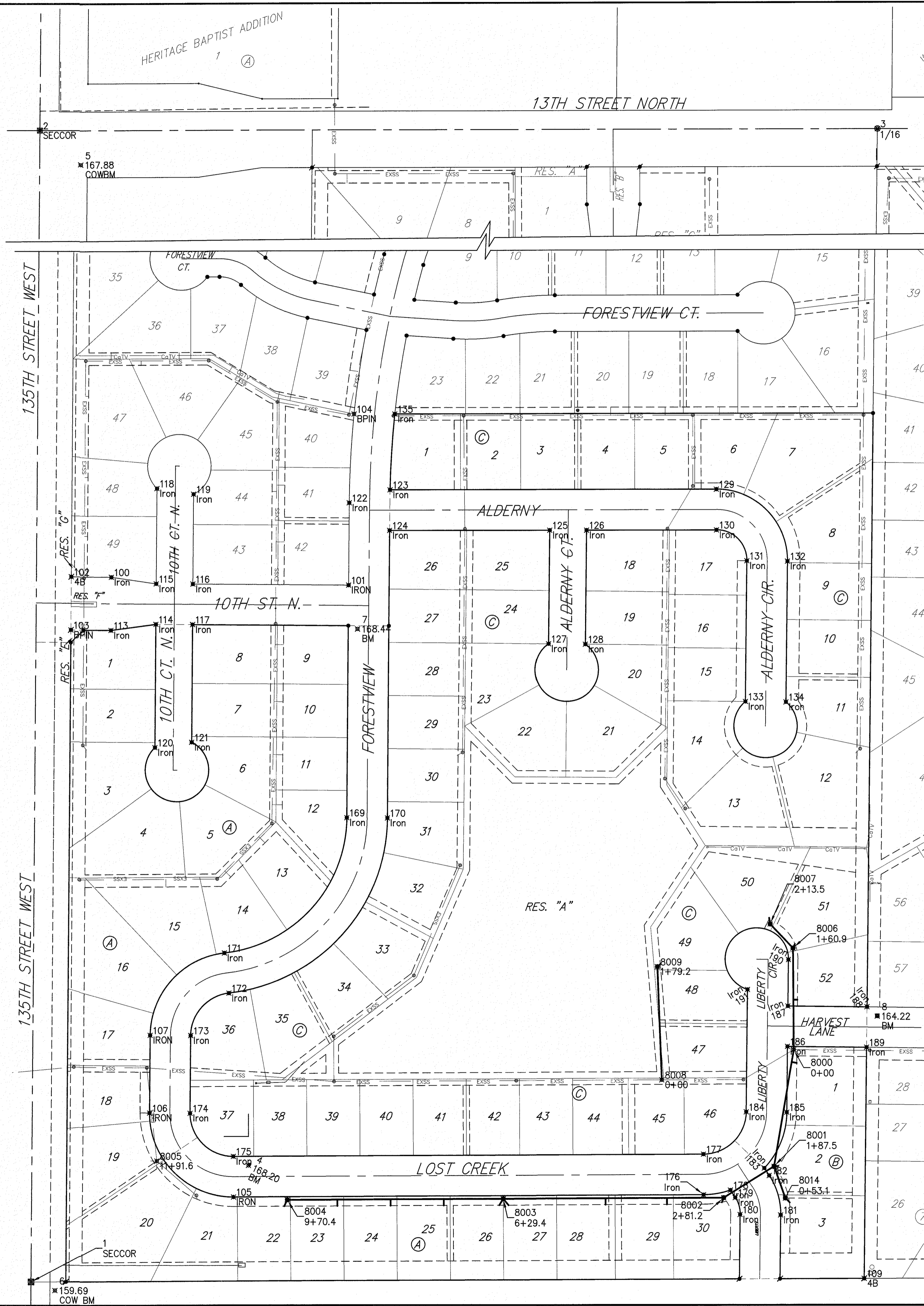
SCALE: Noted  
 SHEET: **3 OF 14**

**BENCHMARKS:**  
 "□" Cut in top of curb 10' west of end of existing pavement adjacent to Lot 37, Block C, Liberty Park 3rd Addition  
 Elev. = 168.20 (City Datum)

"□" Cut in top of curb 10' east of end of existing pavement adjacent to Lot 52, Block C, Liberty Park 3rd Addition  
 Elev. = 164.21 (City Datum)

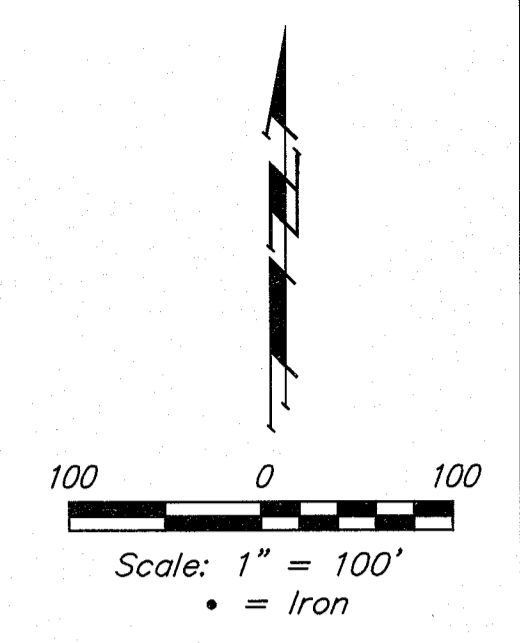
C.O.W. Benchmark Disk. 56' E and 55' N of @ 135th St. W. & 13th St. N.  
 Elev. = 167.83 (City Datum)

C.O.W. Benchmark Disk. 1/2 mile south of 13th St. 39' east of @ 135th St. 18' south of hedge row.  
 Elev. = 159.71 (City Datum)



IRONS				
Point	Northing	Easting	Elevation	Description
1	25023.60	14983.63		SECCOR
2	27656.32	15008.87		SECCOR
3	27656.32	16331.22		1/16
4	25207.32	15327.23	168.20	BM
5	27601.63	15072.90	167.88	COWBM
6	25010.09	15021.23	159.69	COW BM
7	26056.98	15501.10	168.44	BM
8	25442.43	16320.80	164.22	BM
100	26139.86	15112.34		Iron
101	26126.27	15487.22		IRON
102	26140.47	15049.34		4B
103	26056.47	15048.53		BPIN
104	26396.57	15496.28		BPIN
105	25157.66	15303.63		IRON
106	25290.93	15171.20		IRON
107	25413.93	15172.38		IRON
109	25027.97	16299.54		4B
113	26055.87	15111.53		Iron
114	26065.19	15182.62		Iron
115	26129.18	15183.24		Iron
116	26128.63	15241.23		Iron
117	26064.63	15240.62		Iron
118	26279.54	15184.68		Iron
119	26270.29	15242.59		Iron
120	25870.24	15180.75		Iron
121	25878.37	15238.83		Iron
122	26256.04	15488.47		Iron
123	26276.32	15552.81		Iron
124	26212.32	15552.05		Iron
125	26212.32	15804.78		Iron
126	26212.32	15862.78		Iron
127	26033.03	15802.62		Iron
128	26032.33	15860.61		Iron
129	26276.32	16068.22		Iron
130	26212.32	16068.22		Iron
131	26163.74	16116.21		Iron
132	26162.97	16180.21		Iron
133	25941.27	16113.53		Iron
134	25940.50	16177.53		Iron
135	26396.32	15560.60		Iron
169	25758.44	15483.70		Iron
170	25757.82	15547.69		Iron
171	25543.86	15289.79		Iron
172	25480.25	15296.86		Iron
173	25413.32	15236.38		Iron
174	25290.32	15235.20		Iron
175	25221.66	15303.42		Iron
176	25160.13	16046.14		Iron
177	25224.13	16045.93		Iron
178	25167.23	16088.41		Iron
179	25155.44	16096.04		Iron
180	25128.78	16103.74		Iron
181	25128.01	16167.73		Iron
182	25190.21	16149.77		Iron
183	25202.00	16142.14		Iron
184	25291.19	16113.70		Iron
185	25290.54	16177.69		Iron
186	25394.68	16178.95		Iron
187	25458.68	16179.72		Iron
188	25457.33	16304.71		Iron
189	25393.33	16303.94		Iron
190	25532.02	16180.60		Iron
191	25484.79	16116.03		Iron

SS POINTS			
Point	Northing	Easting	Description
8000	25389.58	16188.89	0+00
8001	25204.76	16157.41	1+87.5
8002	25155.23	16077.81	2+81.2
8003	25154.08	15729.64	6+29.4
8004	25152.95	15388.64	9+70.4
8005	25214.67	15182.61	11+91.6
8006	25550.47	16187.89	1+60.9
8007	25588.73	16151.86	2+13.5
8008	25341.90	15980.30	0+00
8009	25520.96	15973.57	1+79.2
8014	25154.71	16175.08	0+53.1



**Baughman** Liberty Park 3rd Addition - Phase 2C  
**COORDINATES**  
 Sanitary Sewer Improvements

Baughman Company, P.A. 315 Ellis St. Wichita, KS 67211 P 316-262-7271 F 316-262-0149  
 ENGINEERING | SURVEYING | PLANNING | LANDSCAPE ARCHITECTURE

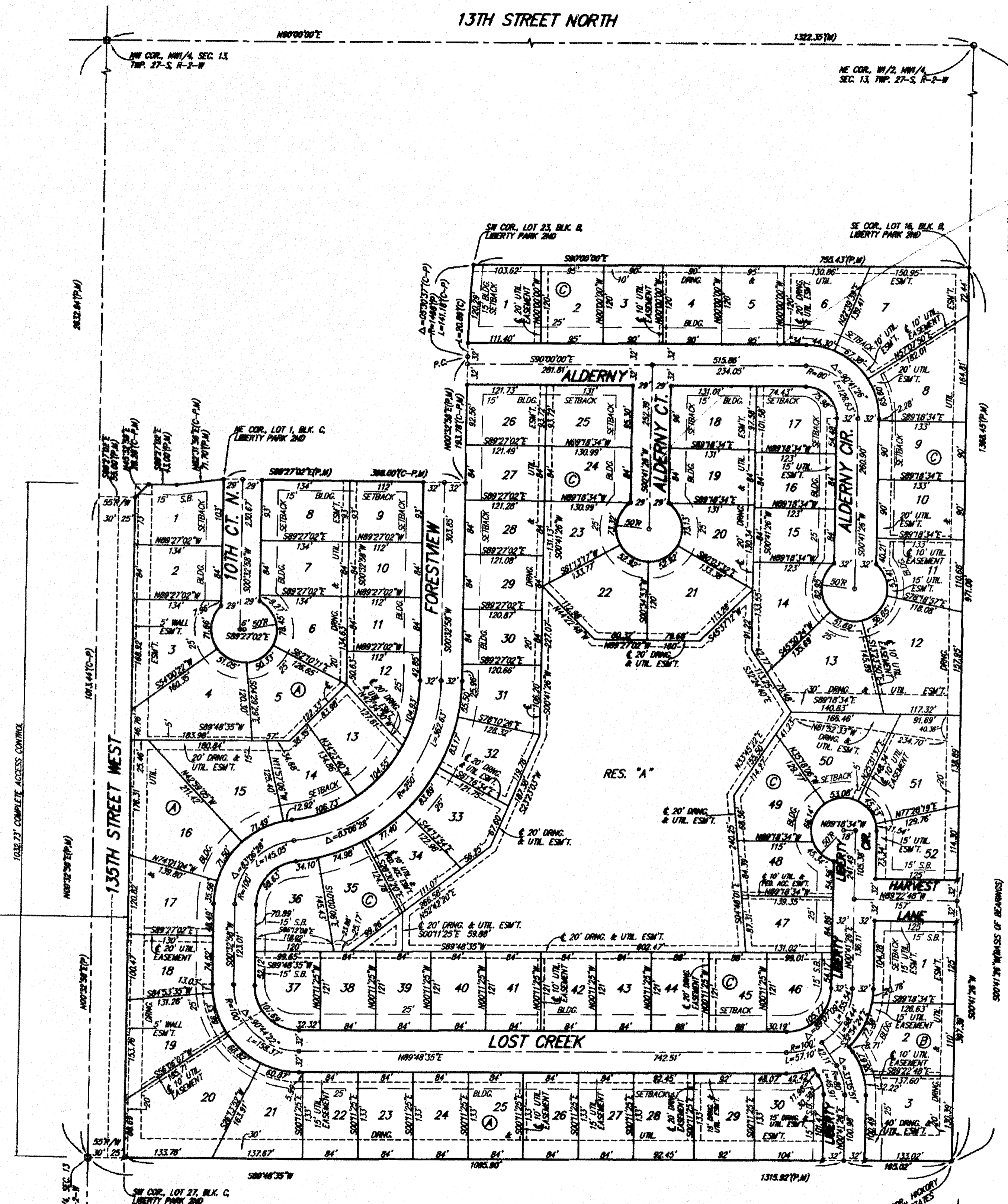
PROJECT NUMBER	DESIGN NBW	DRAWN JAK
REVISIONS:	APPROVED	DATE 11/14/16
	SCALE Noted	
	SHEET	<b>13 OF 14</b>

E:\Projects\Liberty Park 3rd\_0403-P204\Engineering\Phase 2C\SS\_SSS PLANS.dwg



# LIBERTY PARK 3RD

## AN ADDITION TO WICHITA, SEDGWICK COUNTY, KANSAS



LOT	BLOCK	CITY DATUM
13,14, 20-23	C	163.5
29-35, 38-45	C	163.5
47-50	C	163.5

**BENCHMARK:**  
 135TH ST. W. & 13TH ST. N. - CITY OF WICHITA DISC  
 AT SOUTHWEST CORNER OF INTERSECTION,  
 30.00' S. OF & OF 13TH ST. N.  
 35.00' W. OF & OF 135TH ST. W.  
 ELEV. = 168.25 CITY DATUM  
 (1358.65 NGVD29)

**SMALL RAILROAD SPUR IN 2ND 1/2 MI. W. OF 135TH ST. W.**  
 ON SOUTH SIDE OF 13TH ST. N. (N. FACE OF MAP).  
 ELEV. = 172.10 CITY DATUM  
 (1359.50 NGVD29)

**600' HALL IN HIGH LINE POLE, 800' W. & 31' N. OF THE NE COR. NW 1/4, SEC. 13, TWP. 27-S, R-2-W**  
 ELEV. = 162.68 CITY DATUM  
 (1350.08 NGVD29)

- = #4 REBAR W/ "BAUGHMAN" CAP (SET)
  - = #4 REBAR W/ "BAUGHMAN" CAP (FOUND)
  - = 3/4" IRON W/ ALUMINUM YELLOW CAP (FOUND)
  - = 3/4" IRON W/ SEDGWICK COUNTY METAL CAP IN CONCRETE (FOUND)
- (M) = MEASURED  
 (P) = PLATED  
 (C-P) = CALCULATED PER PLATED INFO.

**NOTE:**  
 A master grading plan for drainage has been developed for this subdivision and is on file with the City of Wichita, Kansas. All drainage easements, rights-of-way, or reserves shall remain of established grades or as modified with the approval of the City Engineer of the City of Wichita, Kansas. No obstructions which impede the flow of this drainage system shall be allowed.

State of Kansas) SS We, Baughman Company, P.A., Surveyors in  
 Sedgwick County) and state do hereby certify that we have surveyed and  
 aforesaid county and state do hereby certify that we have surveyed and  
 platted "LIBERTY PARK 3RD", an Addition to Wichita, Sedgwick County,  
 Kansas and that the accompanying plat is a true and correct exhibit of  
 the property surveyed, described as and being a replat of all of Lots 24,  
 25, 26, 27, 28, 29, 30, 31, 32, 33, 34, 35, 36, 37, 38, and 39, Block B,  
 Liberty Park 2nd, an Addition to Wichita, Sedgwick County, Kansas,  
 together with all of Lots 1, 2, 3, 4, 5, 6, 7, 8, 9, 10, 11, 12, 13, 14, 15,  
 16, 17, 18, 19, 20, 21, 22, 23, 24, 25, 26, 27, 28, 29, 30, 31, 32, 33,  
 34, 35, 36, and 37, Block C, in said Liberty Park 2nd, together with all  
 of Lots 1, 2, 3, 4, 5, 6, 7, 8, 9, 10, 11, 12, 13, 14, 15, 16, 17, 18, 19,  
 20, 21, 22, 23, 24, 25, 26, 27, 28, 29, 30, 31, 32, 33, 34, 35, and 36,  
 Block D, in said Liberty Park 2nd, together with all of Lots 1, 2, and 3,  
 Block E, in said Liberty Park 2nd, together with that part of Forestview  
 lying south of the north line of Lot 9 in said Block C, as extended east  
 to the west line of Lot 2 in said Block D, the most southerly Forestview  
 Ct., 10th Ct. N. lying south of 10th St. N., Alderny Ct., Liberty  
 Harvest Lane, Lost Creek, and Lost Creek Cr., all as dedicated in said  
 Liberty Park 2nd.

Existing public easements and dedications  
 being vacated by virtue of K.S.A. 12-512(b).  
 All being situated in the NW 1/4 of Sec. 13, Twp. 27-S,  
 R-2-W of the 6th P.M., Sedgwick County, Kansas.  
 Baughman Company, P.A.

Michael G. Conroy, Surveyor  
 Michael G. Conroy

We, the undersigned holders of mortgages on the  
 above described property, do hereby consent to this plat of "LIBERTY  
 PARK 3RD", an Addition to Wichita, Sedgwick County, Kansas.  
 Legacy Bank

Brad E. Yarger, S.V.P.  
 BRAD E. YARGER

State of Kansas) SS The foregoing instrument acknowledged be-  
 fore me this 7 day of July, 2004, by Brad E. Yarger,  
 S.V.P. of Legacy Bank, on behalf of the bank.

Danielle K. Reichert, Notary Public  
 My App't. Exp. 06/11/05

This plat of "LIBERTY PARK 3RD", an Addition  
 to Wichita, Sedgwick County, Kansas has been submitted to and approved  
 by the Wichita-Sedgwick County Metropolitan Area Planning Commission,  
 Wichita, Kansas.  
 Dated this 2nd day of August, 2004.  
 Wichita-Sedgwick County Metropolitan Area Planning Commission

Ronald L. Morrell, Chair  
 John E. Schlegel, Secretary

This plat approved and all dedications  
 shown hereon accepted by the City Council of the City of Wichita,  
 Kansas, this 5th day of August, 2004.

Carlos Myers, Mayor  
 Karen Sublett, City Clerk

Revised in accordance with K.S.A. 58-2005  
 on this 24th day of July, 2004.  
 Tricia L. Robello, L.S. #1246  
 Deputy County Surveyor  
 Sedgwick County, Kansas

Know all men by these presents that we,  
 the undersigned, have caused the land in the surveyors certificate to be  
 platted into Lots, Blocks, Streets, and a Reserve, to be known as  
 "LIBERTY PARK 3RD", an Addition to Wichita, Sedgwick County, Kansas.  
 The utility easements are hereby granted as indicated for the construction  
 and maintenance of all public utilities. The drainage and utility easements  
 are hereby granted as indicated for drainage purposes and for the  
 construction and maintenance of all public utilities. The drainage  
 easements are hereby granted as indicated for drainage purposes. The  
 wall easement is hereby granted as indicated for the construction and  
 maintenance of a private screening wall and utility main lines and service  
 lines shall be allowed to cross these easements. The utility and  
 pedestrian access easements are hereby granted as indicated for the  
 construction and maintenance of all public utilities and for pedestrian  
 access to or from Reserve "A" and no fences or other obstructions shall  
 be constructed or placed on or within these easements. The streets are  
 hereby dedicated to and for the use of the public. Reserve "A" is hereby  
 reserved for landscaping, lakes, open space, berms, drainage purposes,  
 and utilities as contained to easements. Reserve "A" shall be owned and  
 maintained by the homeowners association for the addition. Access  
 controls shall be as depicted on the face of the plat and are hereby  
 granted to the City of Wichita, Kansas. The Minimum Building Foot  
 Elevations for the lowest opening to the structures shall be as indicated  
 on the face of the plat.

Kelsey Investments, Inc.  
 Paul E. Kelsey, President

Entered on transfer record this 25th day  
 of August, 2004.  
 Don Brace, County Clerk

State of Kansas) SS The foregoing instrument acknowledged before  
 Sedgwick County) me, this 11th day of July, 2004, by Paul E. Kelsey, President  
 of Kelsey Investments, Inc., on behalf of the corporation.  
 Judith M. Terhune, Notary Public  
 My App't. Exp. 11-7-2005

State of Kansas) SS This is to certify that this plat has been  
 Sedgwick County) filed for record in the office of the Register of Deeds, this 25th day  
 of August, 2004 at 3:01 o'clock P.M. and is duly recorded.  
 Bill Meek, Register of Deeds

14 of 14  
**BAUGHMAN COMPANY P.A.**  
 ENGINEERING, SURVEYING, & PLANNING  
 318-348-7871 • 318 E. 51st St. • WICHITA, KANSAS 67211  
 P:\PLAT\LIBERTY PARK 3RD\LIBERTY PARK 3RD.DWG