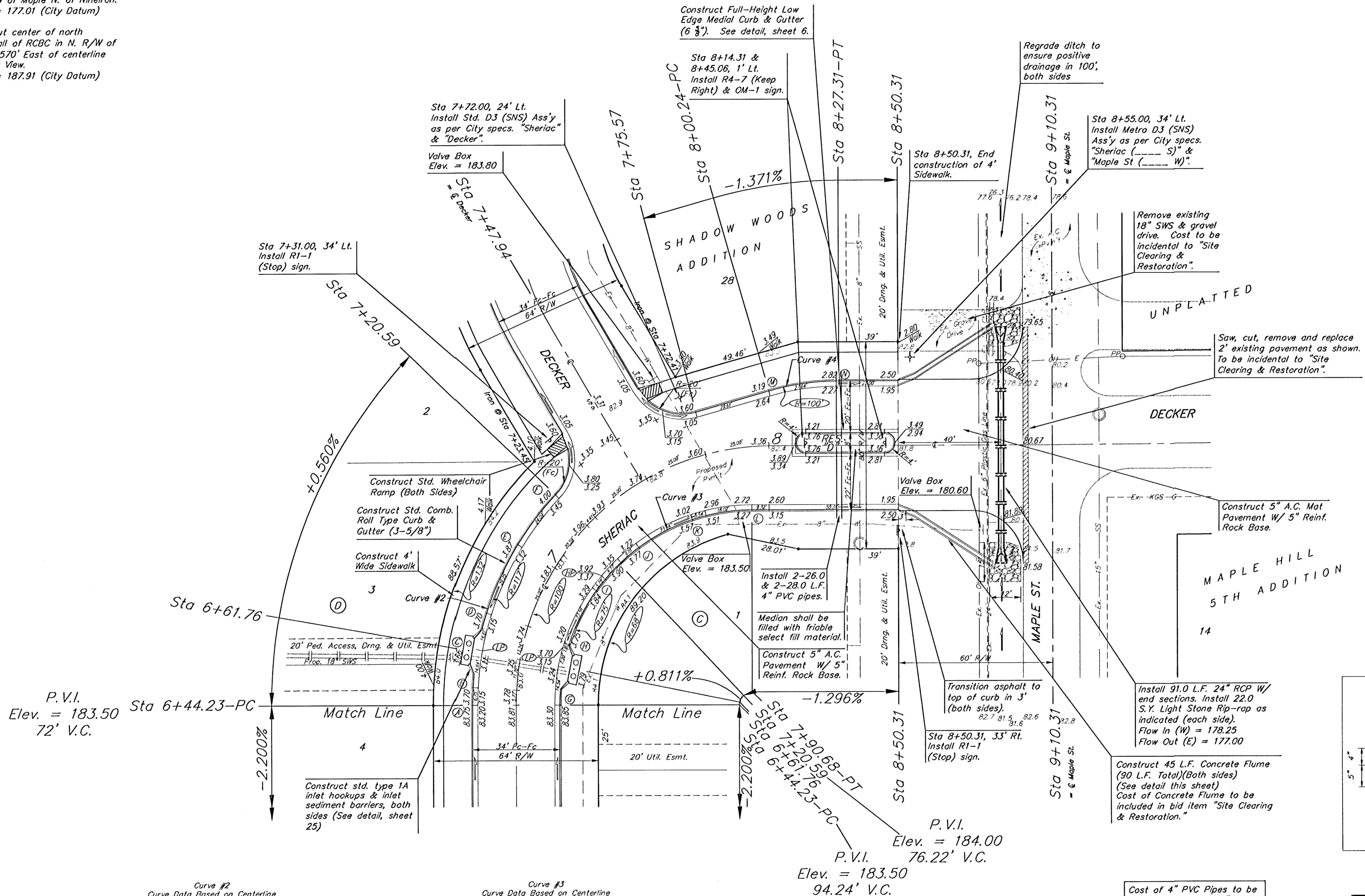


RR Spike in N. Face of PP in
N. R/W of Maple N. of Nineiron.
Elev. = 177.01 (City Datum)

"□" Cut center of north
Headwall of R/CBC in N. R/W of
Maple 570' East of centerline
of City View.
Elev. = 187.91 (City Datum)

Scale: 1" = 20'
• = Iron



P.V.I.
Elev. = 183.50
72' V.C.

P.V.I.
Elev. = 184.00
76.22' V.C.
P.V.I.
Elev. = 183.50
94.24' V.C.

Curve #2
Curve Data Based on Centerline
Rad. = 117' Delta = 43° 45' 08" Tangent = 46.98'
Arc = 89.34' L.C. = 87.19' Def/Ft. = 14.69182 Min.

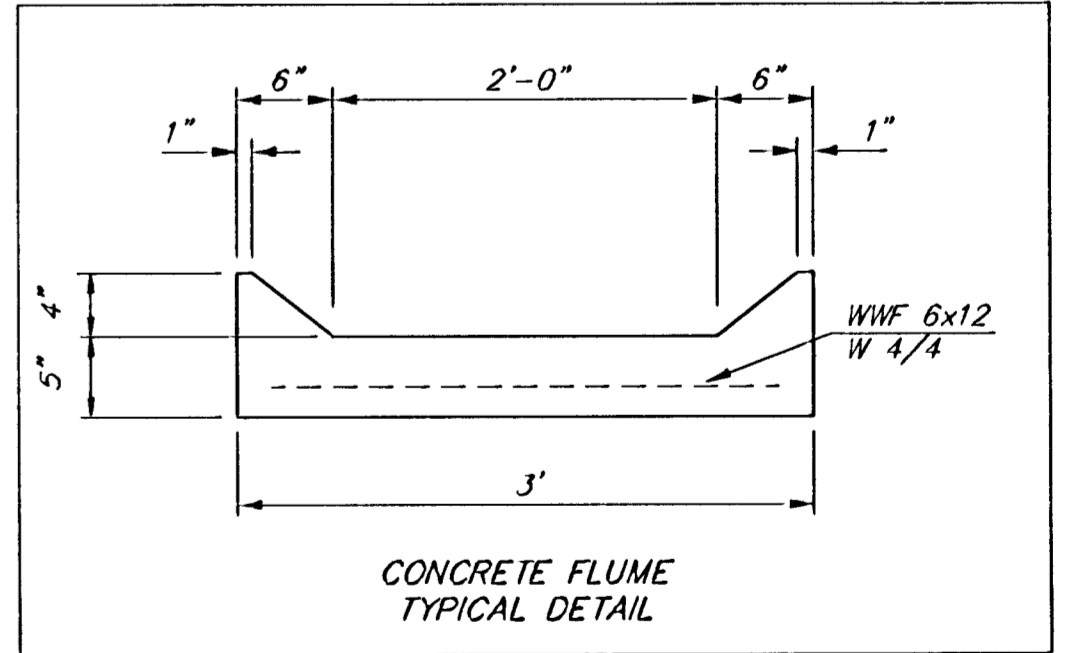
Station	Arc	FACE CHORD LENGTHS 8' Lt.	Def.	T. Def.
A	-	-	0'00"00"	0'00"00"
B	6.75'	7.21'	1'39"10"	1'39"10"
C	13.76'	14.69'	3'22"09"	3'01"29"
D	15.49'	16.54'	5'09"44"	4'48"54"
E	20.25'	21.17'	7'09"44"	6'58"58"
F	24.09'	25.69'	9'53"55"	9'12"34"

Curve #3
Curve Data Based on Centerline
Rad. = 75' Delta = 90° 00' 00" Tangent = 75.00'
Arc = 117.80' L.C. = 106.07' Def/Ft. = 22.92021 Min.

Station	Arc	FACE CHORD LENGTHS 8' Rt.	Def.	T. Def.
G	-	-	0'00"00"	0'00"00"
H	23.56'	20.96'	0'00"00"	0'00"00"
I	23.56'	20.96'	0'00"00"	18'00"00"
J	23.56'	20.96'	0'00"00"	27'00"00"
K	23.56'	20.96'	0'00"00"	36'00"00"
L	23.56'	20.96'	0'00"00"	45'00"00"

Curve #4
Curve Data Based on Centerline
Rad. = 100' Delta = 15° 50' 13" Tangent = 13.91'
Arc = 27.64' L.C. = 27.55' Def/Ft. = 17.18916 Min.

Station	Arc	FACE CHORD LENGTHS 8' Lt.	Def.	T. Def.
M	-	-	0'00"00"	0'00"00"
N	27.64'	29.76'	7'55"06"	7'55"06"



Cost of 4" PVC Pipes to be included in bid item "Site Clearing & Restoration."

NOTE: ROLL TYPE CURB & GUTTER TO BE CONSTRUCTED ON THE PAVEMENT SHOWN ON THIS SHEET. TOP OF CURB ELEVATIONS ARE GIVEN FOR FULL HEIGHT CURB.

As Built

SHADOW WOODS ADDITION - PHASE IA

SHERIAC
STA 8+44.23 TO STA 9+10.31

BAUGHMAN COMPANY P.A.
ENGINEERING, SURVEYING, & PLANNING
316-262-7271 • 315 ELLIS • WICHITA, KANSAS 67211

PROJECT NUMBER
472-83721

DESIGN: NBW DRAWN: TMS APPROVED: DATE: 05-28-03 SCALE: Noted SHEET OF 37