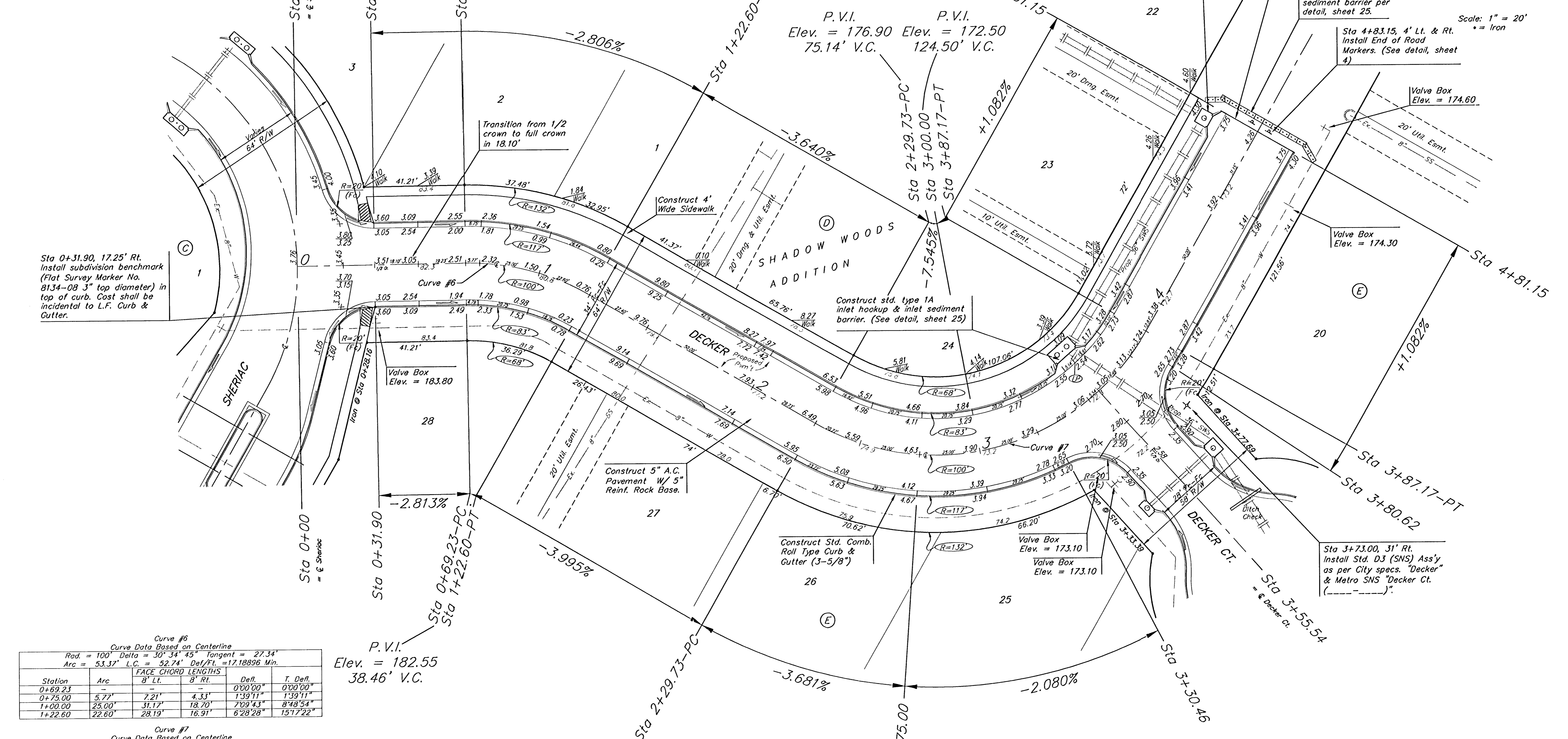


RR Spike in N. Face of PP in N. R/W of Maple N. of Nineiron. Elev. = 177.01 (City Datum)

"□" Cut center of north Headwall of RCB in N. R/W of Maple 570' East of centerline of City View. Elev. = 187.91 (City Datum)

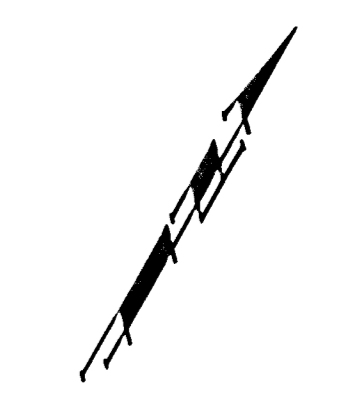


Curve #6  
Curve Data Based on Centerline  
Rad. = 100' Delta = 30° 34' 45" Tangent = 27.34'  
Arc = 53.37' L.C. = 52.74' Def/Ft. = 17.18896 Min.

Station	Arc	FACE CHORD LENGTHS	Def.	T. Def.
		B' Lt. B' Rt.		
0+69.23	-	-	0'00"00"	0'00"00"
0+75.00	5.77'	7.21' 4.33'	1'39"11"	1'39"11"
1+00.00	25.00'	31.17' 18.70'	7'09"42"	8'48"54"
1+22.60	22.60'	28.19' 16.91'	6'28"28"	15'17"22"

Curve #7  
Curve Data Based on Centerline  
Rad. = 100' Delta = 90° 12' 16" Tangent = 100.36'  
Arc = 157.44' L.C. = 141.67' Def/Ft. = 17.18835 Min.

Station	Arc	FACE CHORD LENGTHS	Def.	T. Def.
		B' Lt. B' Rt.		
2+29.73	-	-	0'00"00"	0'00"00"
2+50.00	20.27'	15.18' 25.29'	5'48"24"	5'48"24"
2+75.00	25.00'	18.70' 31.17'	7'09"42"	12'58"09"
3+00.00	25.00'	18.70' 31.17'	7'09"42"	20'07"49"
3+25.00	25.00'	18.70' 31.17'	7'09"42"	27'17"32"
3+30.46	5.46'	4.09' 6.82'	1'33"51"	28'51"23"
3+55.54	25.08'	18.76' 31.27'	7'11"05"	36'02"28"
3+80.62	25.08'	18.76' 31.27'	7'11"05"	43'13"33"
3+87.17	6.55'	4.91' 8.19'	1'52"55"	45'06"08"



Scale: 1" = 20'  
• = Iron

As Built  
SHADOW WOODS ADDITION - PHASE IA  
**DECKER**  
STA 0+00 TO STA 4+81.15

**BAUGHMAN COMPANY P.A.**  
ENGINEERING, SURVEYING, & PLANNING  
316-262-7271 • 315 ELLIS • WICHITA, KANSAS 67211

PROJECT NUMBER  
**472-83721**

DESIGN NBW DRAWN TMS APPROVED DATE 05-28-03 SCALE Noted

SHEET **11** OF **37**

NOTE: ROLL TYPE CURB & GUTTER TO BE CONSTRUCTED ON THE PAVEMENT SHOWN ON THIS SHEET. TOP OF CURB ELEVATIONS ARE GIVEN FOR FULL HEIGHT CURB.