

SHADOW WOODS ADDITION WICHITA, SEDGWICK COUNTY, KANSAS

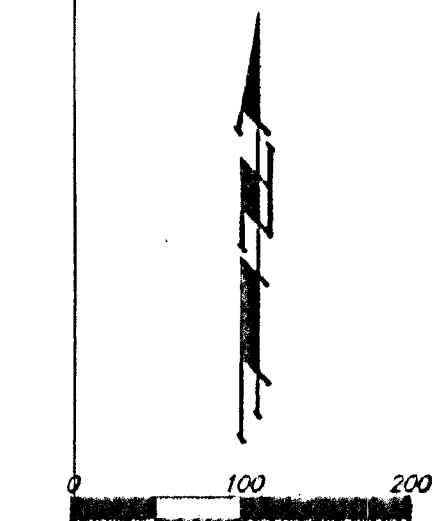
Maple Group, L.L.C.,
Member
Jay W. Russell
(See Page 1 for Owner's Acknowledgment)

MINIMUM BUILDING PAD ELEVATIONS FOR LOWEST OPENING TO THE STRUCTURES		
LOT	BLOCK	ELEVATION CITY DATUM
1-24	D	177.2
1-7	E	182.5

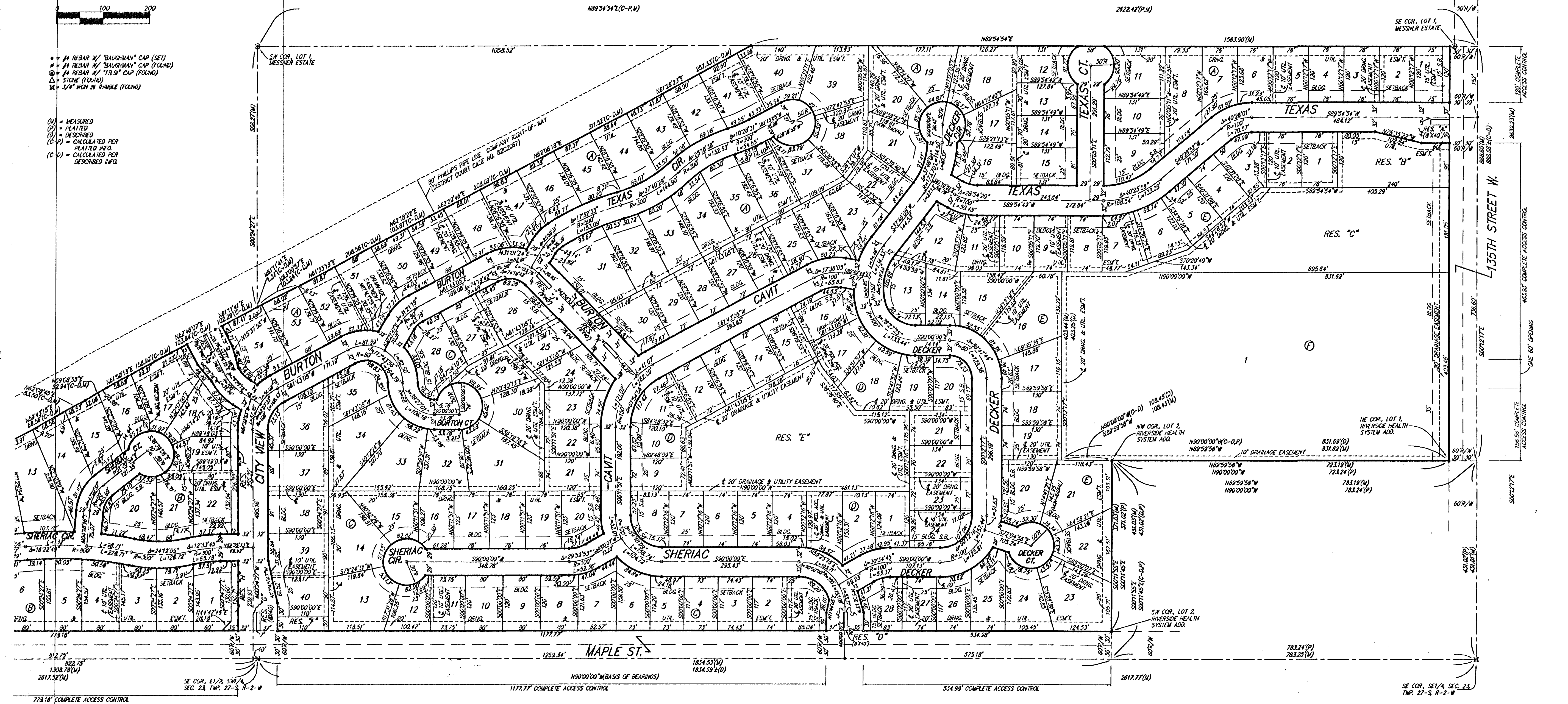
BENCHMARK
1350 SE 1/2 & Maple -
City of Wichita Benchmark Disc
at hood of NE corner
of intersection
5400' SW 1/4 Section Cor. Iron
Elev. = 150.28 City Datum
(1337.69 NGVD29)

NOTE:
A master grading plan for drainage has been developed for this subdivision and is on file with the City of Wichita, Kansas. All drainage easements, rights-of-way, or reserves shall remain at established grades or as modified with the approval of the City Engineer of the City of Wichita, Kansas. No obstructions which impede the flow of this drainage system shall be allowed.

NOTE:
A drainage plan has been developed for this subdivision and is on file with the City of Wichita, Kansas. Drainage inlets shall remain as depicted or as modified with the approval of the City Engineer of the City of Wichita, Kansas. No obstructions which impede the flow of this drainage plan shall be allowed.



- #1 REBAR W/ "BAUGHMAN" CAP (SET)
 - #1 REBAR W/ "BAUGHMAN" CAP (FOUND)
 - #4 REBAR W/ "TES" CAP (FOUND)
 - 3/4" IRON IN TRIMBLE (FOUND)
- (M) = MEASURED
(P) = PLATTED
(D) = DESCRIBED
(C-P) = CALCULATED PER PLATTED INFO.
(C-D) = CALCULATED PER DESCRIBED INFO.



4-11-2020 1:28:41 PM
4-11-2020 1:28:41 PM
4-11-2020 1:28:41 PM