

Subdivision Bench Marks

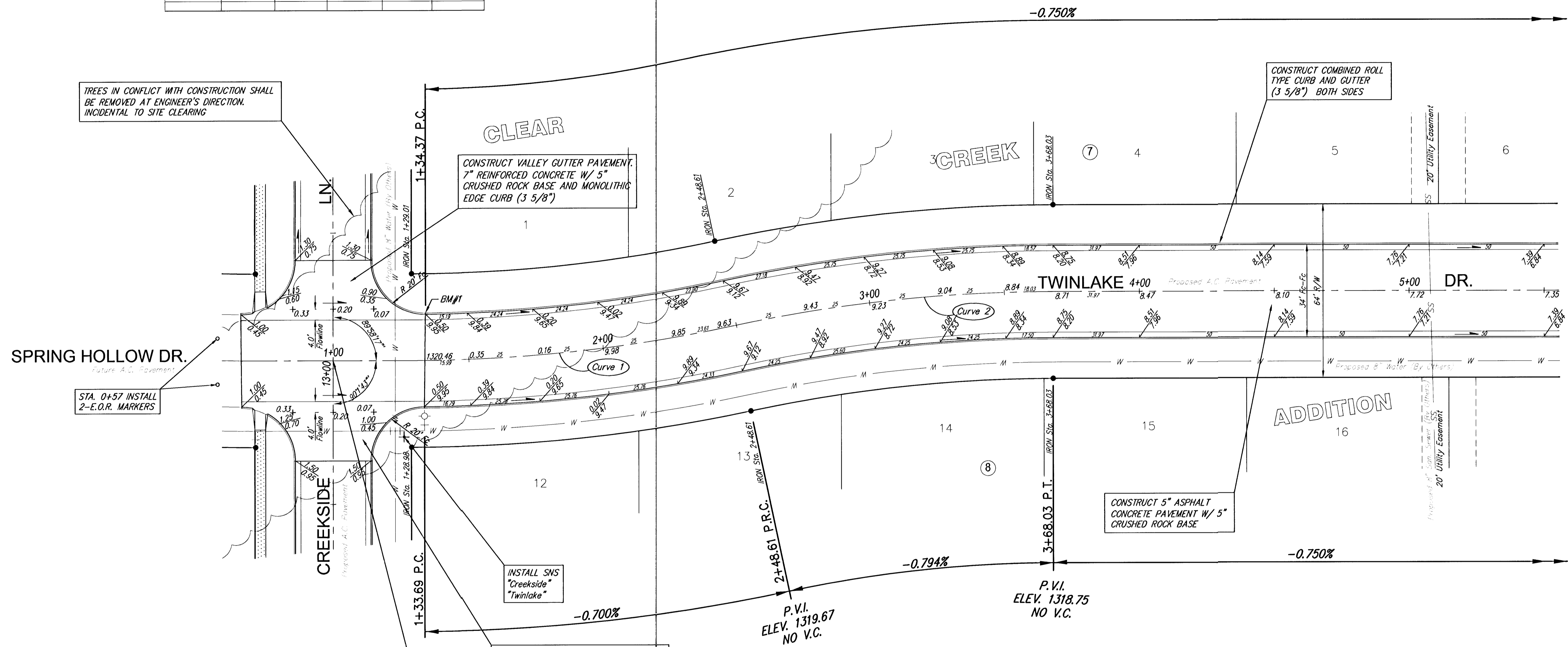
No.	Street and Station	From CL	Description	Elevation
1	Twinlake, Sta. 1+34.37	17.0' Lt.	East end of northeast curb return of Creekside to Loguna.	
2				

Curve 1
Curve Data Based on Centerline
Rad. = 568' Delta = 120° 56' Tangent = 60.03'
Arc = 119.61' L.C. = 119.39' Def/Ft. = 3.02622 Min.

Station	Arc	FACE CHORD LENGTHS			I. Defl.
		8 Lt.	8 Rt.	Defl.	
1+29.00	-	-	-	0°00'00"	0°00'00"
1+50.00	21.00'	20.07'	21.92'	1°03'33"	1°03'33"
1+75.00	25.00'	23.90'	28.10'	1°53'39"	2°19'12"
2+00.00	25.00'	23.90'	28.10'	1°53'39"	3°34'52"
2+25.00	23.00'	23.90'	28.10'	1°53'39"	4°50'31"
2+48.61	23.61'	22.57'	24.65'	1°11'27"	6°01'58"

Curve 2
Curve Data Based on Centerline
Rad. = 568.44' Delta = 120° 13' Tangent = 60.01'
Arc = 119.42' L.C. = 119.37' Def/Ft. = 3.02804 Min.

Station	Arc	FACE CHORD LENGTHS			Defl.	I. Defl.
		8 Lt.	8 Rt.	Defl.		
2+48.61	-	-	-	0°00'00"	0°00'00"	
2+50.00	1.39'	1.45'	1.33'	0°04'12"	0°04'12"	
2+75.00	25.00'	26.13'	23.93'	1°15'42"	1°19'54"	
3+00.00	25.00'	26.13'	23.93'	1°15'42"	2°35'36"	
3+25.00	25.00'	26.13'	23.93'	1°15'42"	3°51'19"	
3+68.03	43.03'	44.97'	41.18'	2°10'18"	6°01'36"	



TREES IN CONFLICT WITH CONSTRUCTION SHALL BE REMOVED AT ENGINEER'S DIRECTION. INCIDENTAL TO SITE CLEARING

CONSTRUCT VALLEY GUTTER PAVEMENT. 7" REINFORCED CONCRETE W/ 5" CRUSHED ROCK BASE AND MONOLITHIC EDGE CURB (3 5/8")

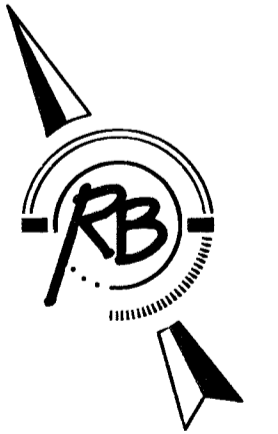
CONSTRUCT COMBINED ROLL TYPE CURB AND GUTTER (3 5/8") BOTH SIDES

CONSTRUCT 5" ASPHALT CONCRETE PAVEMENT W/ 5" CRUSHED ROCK BASE

INSTALL SNS "Creekside" "Twinlake"

CONSTRUCT VALLEY GUTTER PAVEMENT. 7" REINFORCED CONCRETE W/ 5" CRUSHED ROCK BASE AND MONOLITHIC EDGE CURB (3 5/8")

Sta. 1+00 Twinlake Dr. = Sta. 13+02.92 Creekside Ln.



SCALE 1" = 20'
IRON = •

NOTE: ROLL TYPE CURB AND GUTTER TO BE CONSTRUCTED ALONG PAVEMENT DEPICTED ON THIS SHEET

**Clear Creek Addition, Paving Improvements
Twinlake Drive
WICHITA, KANSAS**

Ruggles & Bohm, P.A.
Engineering, Surveying, Land Planning

924 North Main
Wichita, Kansas 67203
www.rbkansas.com

(316) 264-8008
(316) 264-4621 fax
E-mail: info@rbkansas.com

DESIGN: KWL
DRAWN: TEB
REVIEW: TEB
UTILITY: TEB

PROJECT NUMBER: 472-83743
DATE: July 29, 2003

SHEET 5 OF 40