

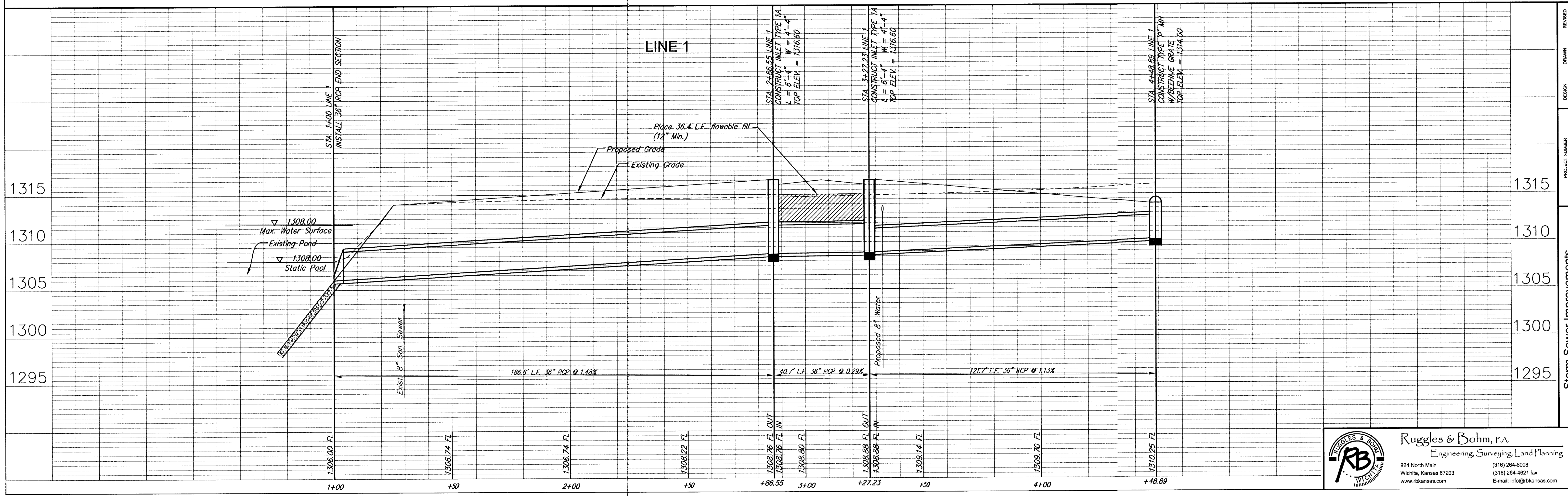
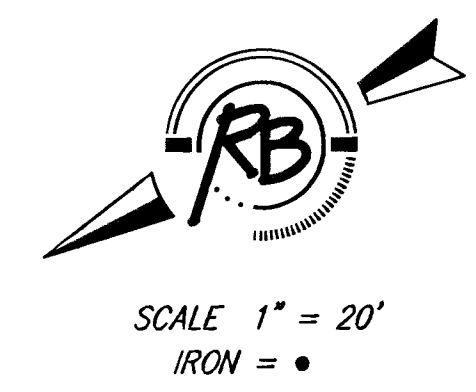
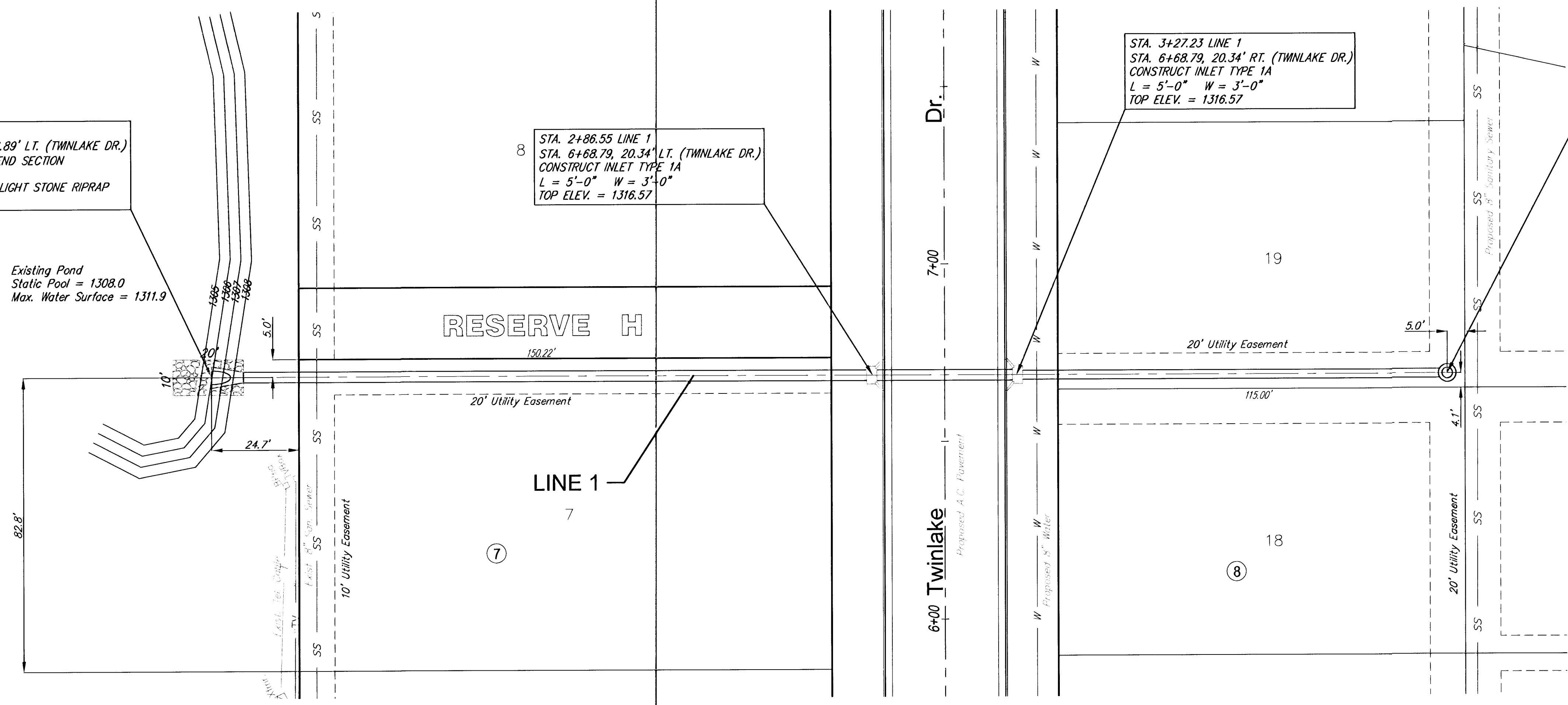
STA. 1+00 LINE 1
 STA. 6+68.79, 206.89' LT. (TWINLAKE DR.)
 INSTALL 36" RCP END SECTION
 FL 1306.00
 INSTALL 22.2 S.Y. LIGHT STONE RIPRAP
 AS SHOWN

Existing Pond
 Static Pool = 1308.0
 Max. Water Surface = 1311.9

8
 STA. 2+86.55 LINE 1
 STA. 6+68.79, 20.34' LT. (TWINLAKE DR.)
 CONSTRUCT INLET TYPE 1A
 L = 5'-0" W = 3'-0"
 TOP ELEV. = 1316.57

STA. 3+27.23 LINE 1
 STA. 6+68.79, 20.34' RT. (TWINLAKE DR.)
 CONSTRUCT INLET TYPE 1A
 L = 5'-0" W = 3'-0"
 TOP ELEV. = 1316.57

STA. 4+48.89 LINE 1
 CONSTRUCT TYPE 'P' MANHOLE W/BEEHIVE GRATE (5' DIA.)
 TOP ELEV. = 1314.00



DESIGN	TEB	REVISION
K/M/L	DATE	REVIEW
UTILITY	July 30, 2003	
PROJECT NUMBER	472-83743	
DRAWING FILE	storm sewer [sww 1]	

Storm Sewer Improvements
 SWS Line 1
 WICHITA, KANSAS

Ruggles & Bohm, P.A.
 Engineering, Surveying, Land Planning
 924 North Main (316) 264-8008
 Wichita, Kansas 67203 (316) 264-4621 fax
 www.rbkansas.com E-mail: info@rbkansas.com