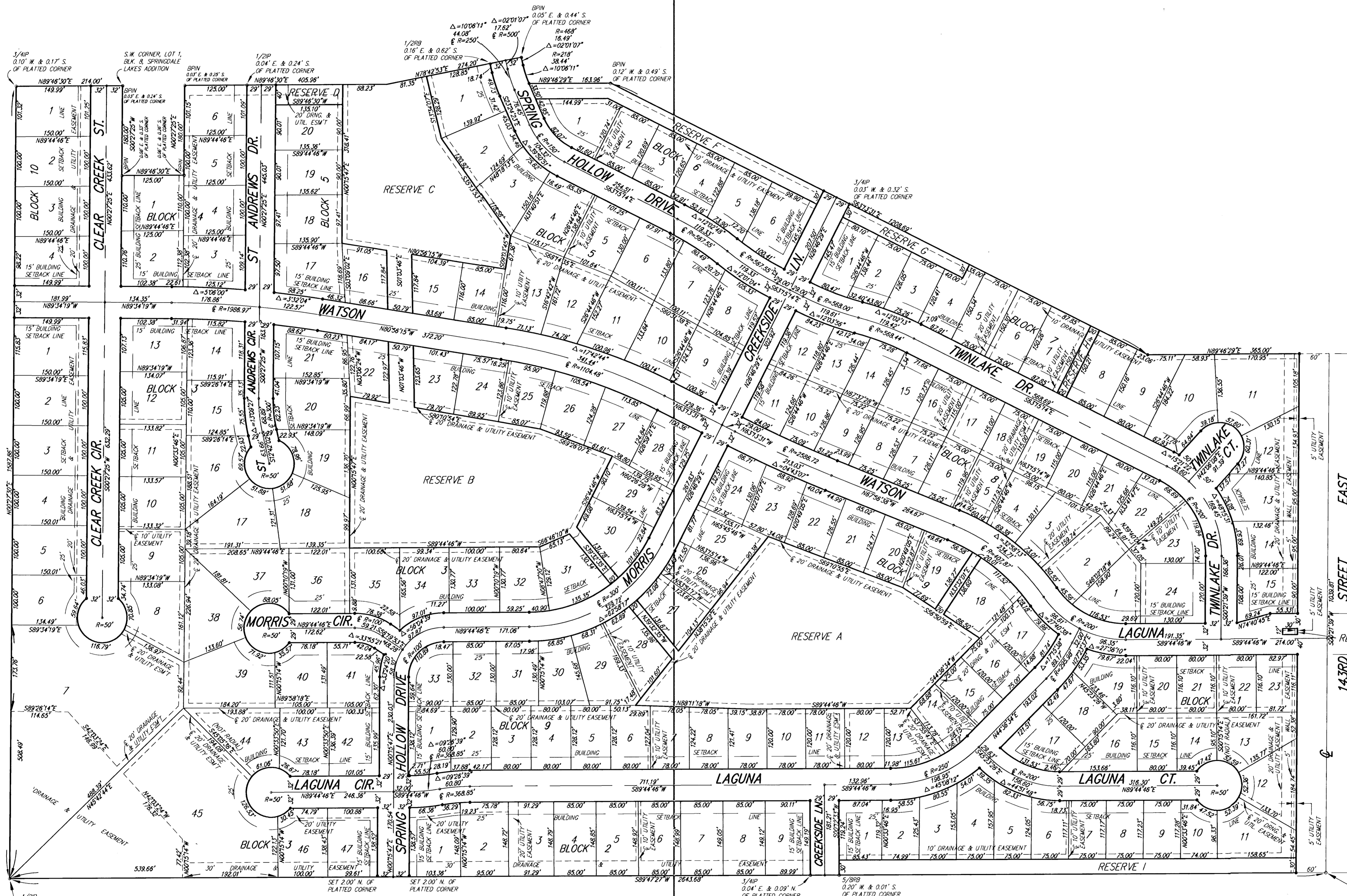


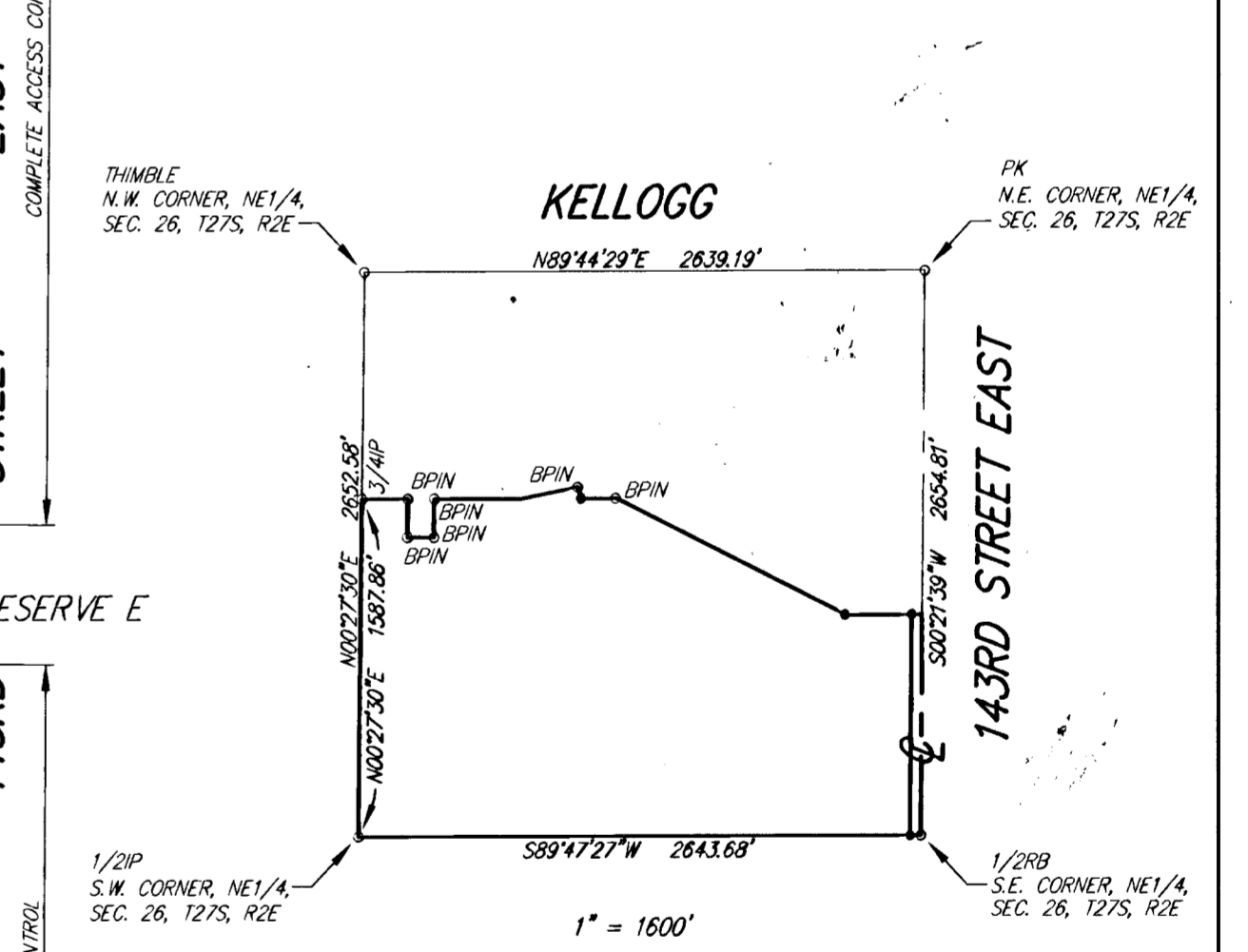
CLEAR CREEK ADDITION

Wichita, Sedgwick County, Kansas



- SURVEY MARKER LEGEND**
- = 5/8" REBAR IN THIMBLE (FOUND)
 - 1/2RB = 1/2" REBAR (FOUND)
 - 1/2IP = 1/2" IRON PIPE (FOUND)
 - 3/4IP = 3/4" IRON PIPE (FOUND)
 - 5/8RB = 5/8" REBAR (FOUND)
 - BPIN = 5/8" REBAR W/BAUGHMAN CAP (FOUND)
 - PK = PK NAIL W/W/EC WASHER (FOUND)
 - = 5/8" REBAR W/RAB CAP (SET)

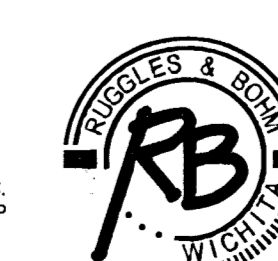
BENCH MARK: R.R. SPIKE WEST FACE POWER POLE
38 FEET WEST OF THE S.E. CORNER, SEC. 16, T27S, R2E
ELEV. = 1314.88 NGVD



SHEET 40 OF 40

Ruggles & Bohm, P.A.
Engineering, Surveying, Land Planning
924 North Main
Wichita, Kansas 67203
www.rbkansas.com

DWG FILE: 226P-W.C.
PROJECT NO. 02K0226P
APRIL 9, 2003



(316) 264-9008
(316) 264-4821 fax
E-mail: info@rbkansas.com

18-03-05-02