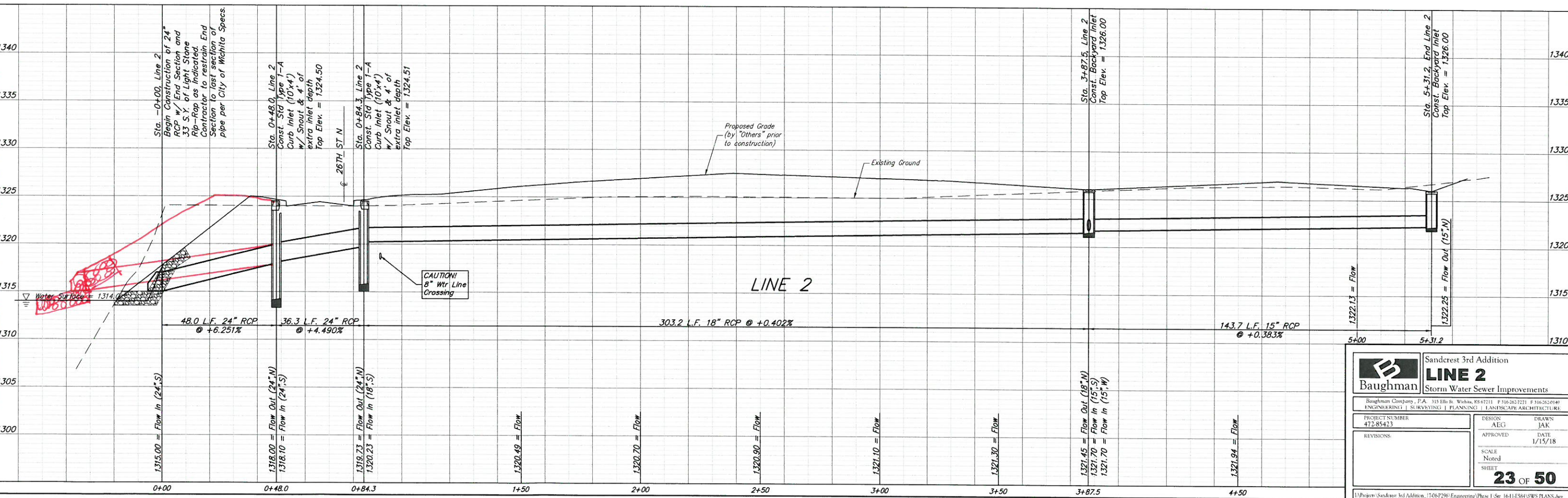
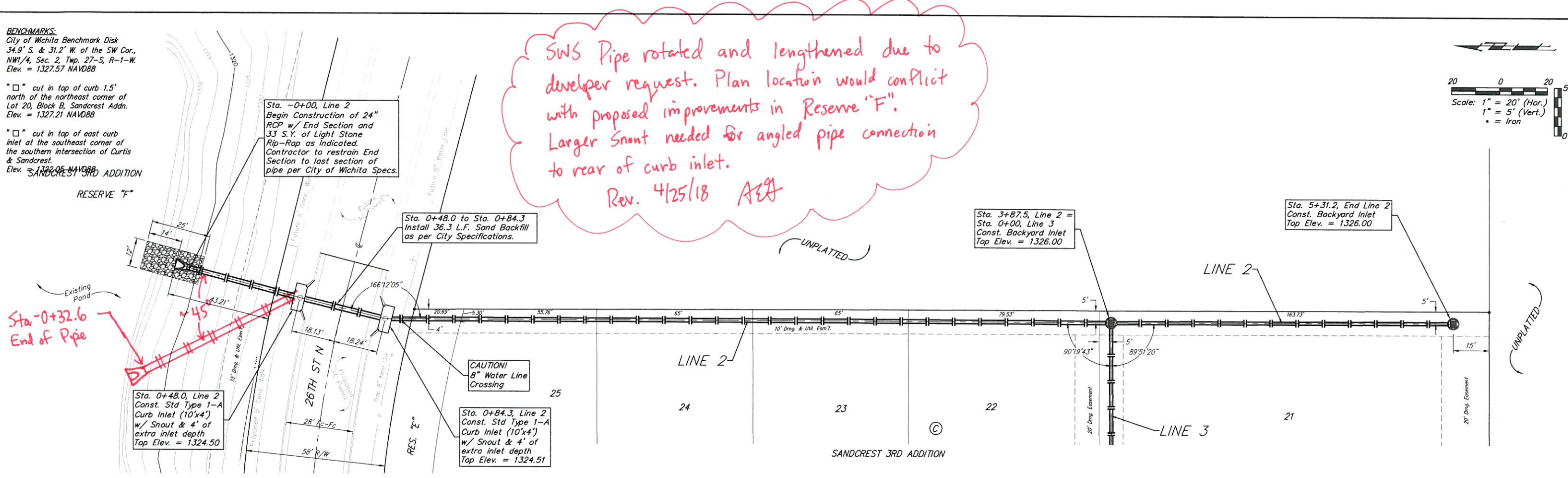
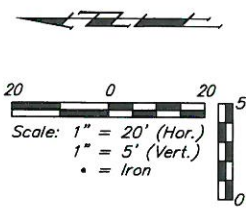


BENCHMARKS:
 City of Wichita Benchmark Disk
 34.9' S. & 31.2' W. of the SW Cor.,
 NW1/4, Sec. 2, Twp. 27-S, R-1-W.
 Elev. = 1327.57 NAVD88

"□" cut in top of curb 1.5'
 north of the northeast corner of
 Lot 20, Block B, Sandcrest Addn.
 Elev. = 1327.21 NAVD88

"□" cut in top of east curb
 inlet at the southeast corner of
 the southern intersection of Curtis
 & Sandcrest.
 Elev. = 1327.05 NAVD88

SWS Pipe rotated and lengthened due to developer request. Plan location would conflict with proposed improvements in Reserve "F". Larger Snout needed for angled pipe connection to rear of curb inlet.
 Rev. 4/25/18 AEA



Baughman Sandcrest 3rd Addition
LINE 2
 Storm Water Sewer Improvements

Baughman Company, P.A. 315 Ellis St. Wichita, KS 67211 P 316-262-7271 F 316-262-0140
 ENGINEERING | SURVEYING | PLANNING | LANDSCAPE ARCHITECTURE

PROJECT NUMBER 472-85423	DESIGN AEG	DRAWN JAK
REVISIONS	APPROVED	DATE 1/15/18
SCALE Noted		SHEET 23 OF 50
PROJECT: Sandcrest 3rd Addition, 1706-F206-Engineering/Phase 1 Str. 1641-E584-SWS PLANS.dwg		