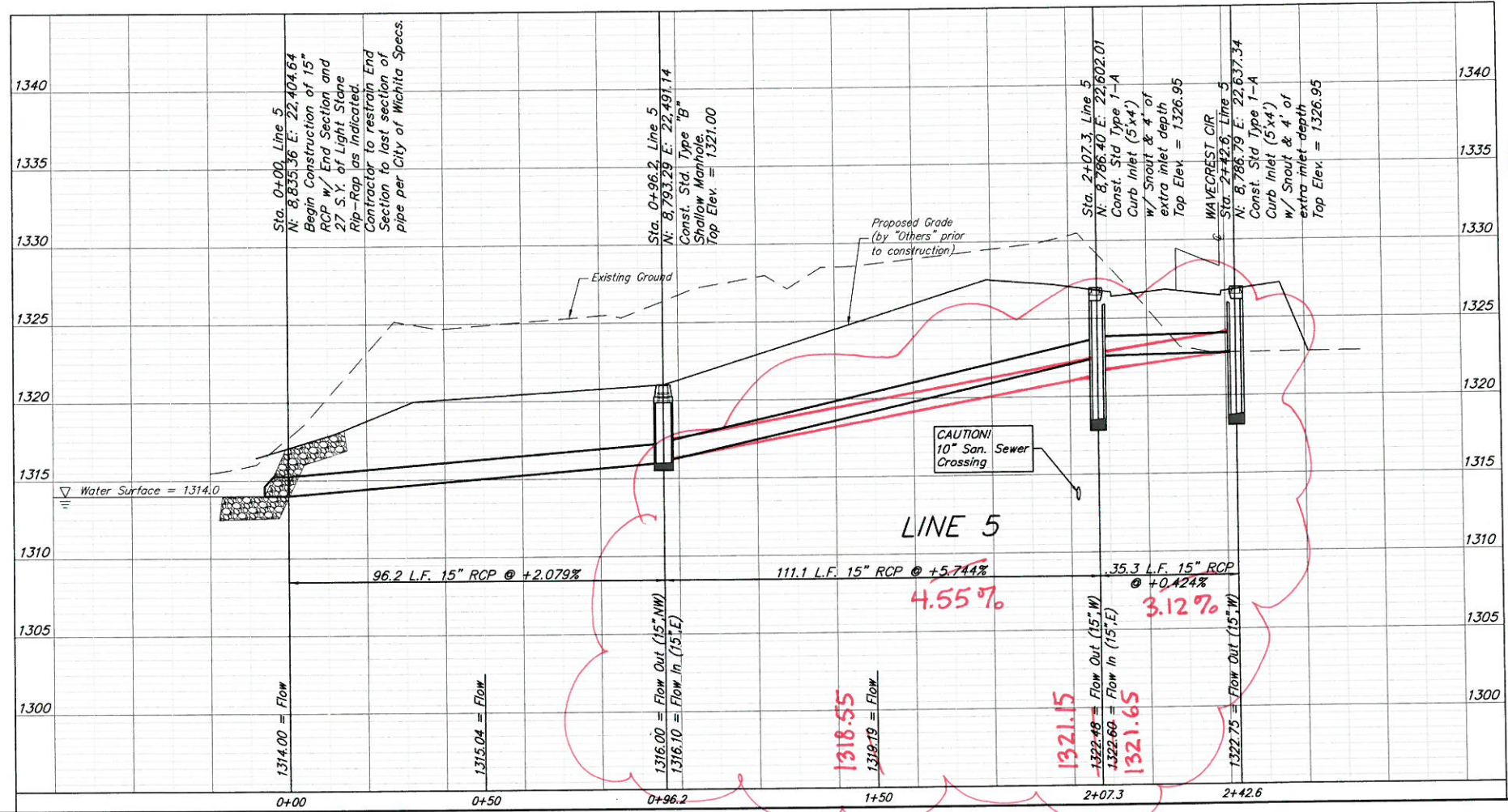
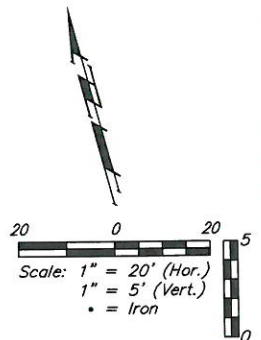
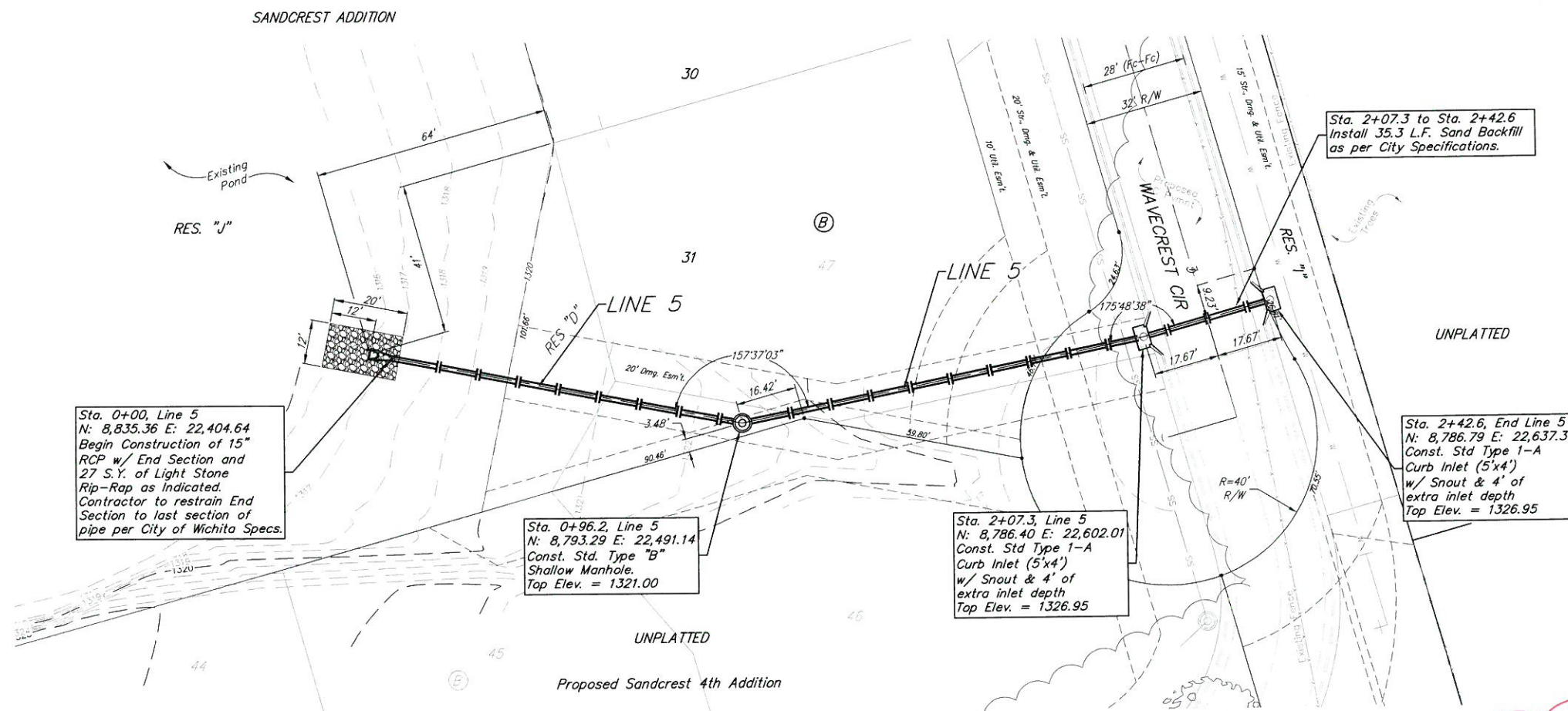


**BENCHMARKS:**  
 City of Wichita Benchmark Disk  
 34.9' S. & 31.2' W. of the SW Cor.,  
 NW1/4, Sec. 2, Twp. 27-S, R-1-W.  
 Elev. = 1327.57 NAVD88

\* □ cut in top of curb 1.5'  
 north of the northeast corner of  
 Lot 20, Block B, Sandcrest Addn.  
 Elev. = 1327.21 NAVD88

\* □ cut in top of east curb  
 inlet at the southeast corner of  
 the southern intersection of Curtis  
 & Sandcrest.  
 Elev. = 1322.05 NAVD88



Pipe Flows and Slopes revised  
 to match existing opening in  
 backside of curb inlet.  
 4/26/18 AEG

	Sandcrest 3rd Addition	
	<b>LINE 5</b>	
Storm Water Sewer Improvements		
<small>Baughman Company, P.A. 315 Ellis St. Wichita, KS 67211 P 316-262-2121 F 316-262-0149        ENGINEERING   SURVEYING   PLANNING   LANDSCAPE ARCHITECTURE</small>		
PROJECT NUMBER 472-85423	DESIGN AEG	DRAWN JAK
REVISIONS 4/04/18 Sandcrest 4th Addition Revision	APPROVED JAK	DATE 1/15/18
SCALE Noted		SHEET <b>25R OF 50</b>

C:\Project\Sandcrest 3rd Addition\_1726-P226\Engineering\Phase 1 Set\_1611-ESW\SW PLANS.dwg