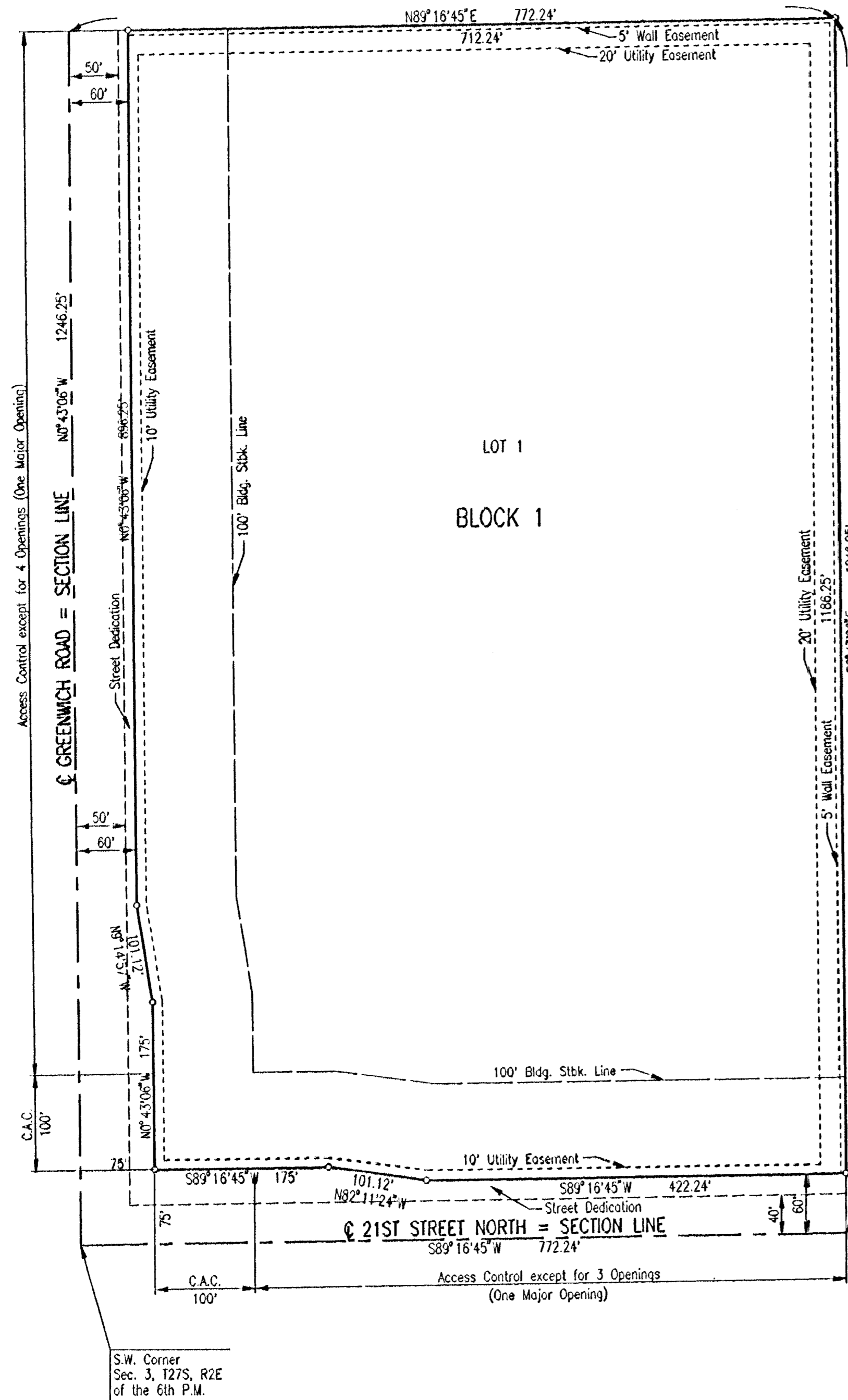


THE MANHATTAN ADDITION TO SEDGWICK COUNTY, KANSAS



SCALE: 1" = 100'
 ○ = IRON SET
 C.A.C. = COMPLETE ACCESS CONTROL

B.M. - CITY OF WICHITA DISC, 41 FEET SOUTH AND 58 FEET WEST OF IRON AT CENTERLINE OF GREENWICH AND 21ST ST. N. ELEV. 173.98 CITY DATUM ELEV. 1361.38 M.S.L.

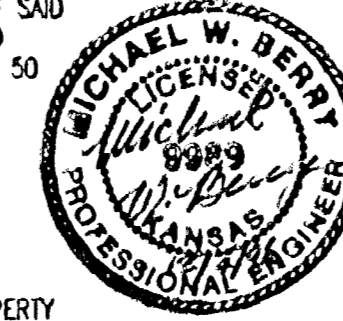
SEE AGREEMENT FILED BY SEPARATE INSTRUMENT FOR TERMS, RESTRICTIONS, AND CONDITIONS ESTABLISHED FOR THE DEVELOPMENT OF THIS PROPERTY.

STATE OF KANSAS)
 COUNTY OF SEDGWICK) SS

I, MICHAEL W. BERRY, A REGISTERED LAND SURVEYOR IN AFORESAID STATE AND COUNTY, DO HEREBY CERTIFY THAT ON THIS 20th DAY OF December 1996, I HAVE CAUSED TO BE SURVEYED AND PLATTED THE MANHATTAN ADDITION TO SEDGWICK COUNTY, KANSAS, INTO A LOT, A BLOCK, AND STREETS THE SAME TO BE DESCRIBED AS:

A TRACT IN THE SOUTHWEST QUARTER OF THE SOUTHWEST QUARTER OF SECTION 3, TOWNSHIP 27 SOUTH, RANGE 2 EAST OF THE SIXTH PRINCIPAL MERIDIAN, SEDGWICK COUNTY, KANSAS, DESCRIBED AS BEGINNING AT THE SOUTHWEST CORNER OF SAID SECTION; THENCE NORTH ALONG THE WEST LINE OF SAID SECTION, 1246.25 FEET; THENCE EAST PARALLEL TO THE SOUTH LINE OF SAID SECTION, 772.24 FEET; THENCE SOUTH PARALLEL TO THE WEST LINE OF SAID SECTION, 1246.25 FEET; THENCE WEST ALONG THE SOUTH LINE OF SAID SECTION, 772.24 FEET TO THE POINT OF BEGINNING, EXCEPT THE WEST 50 FEET AND THE SOUTH 40 FEET THEREOF.

Michael W. Berry
 MICHAEL W. BERRY, R.L.S. NO. 9148
 PROFESSIONAL ENGINEERING CONSULTANTS, P.A.



KNOW ALL MEN BY THESE PRESENTS THAT WE, THE UNDERSIGNED (PROPERTY OWNERS OF THE LAND AS ABOVE SET FORTH IN THE SURVEYOR'S CERTIFICATE, HAVE CAUSED THE LAND TO BE SURVEYED AND PLATTED INTO A LOT, A BLOCK, AND STREETS, THE SAME TO BE KNOWN AS THE MANHATTAN ADDITION TO SEDGWICK COUNTY, KANSAS. EASEMENTS, AS INDICATED FOR THE CONSTRUCTION AND MAINTENANCE OF PUBLIC UTILITIES, ARE HEREBY GRANTED. THE STREETS ARE HEREBY DEDICATED TO AND FOR THE USE OF THE PUBLIC.

THE 5-FOOT WALL EASEMENT ALONG THE NORTH AND EAST LINES OF BLOCK 1 IS HEREBY PLATTED FOR THE CONSTRUCTION AND MAINTENANCE OF A PRIVATE WALL. UTILITIES MAY CROSS THE WALL EASEMENT.

ALL ADJUTERS RIGHT OF ACCESS TO AND FROM 21ST STREET NORTH AND GREENWICH ROAD OVER AND ACROSS THE SOUTH AND WEST SIDE OF LOT 1, BLOCK 1, ARE HEREBY GRANTED TO THE APPROPRIATE GOVERNING BODY; PROVIDED HOWEVER THAT LOT 1 SHALL HAVE ACCESS TO THE 21ST STREET NORTH AT (3) THREE LOCATIONS AND GREENWICH ROAD AT (4) FOUR LOCATIONS AS SHOWN, SAID LOCATIONS TO BE DESIGNATED BY THE APPROPRIATE ENGINEER.

SEE AGREEMENT FILED BY SEPARATE INSTRUMENT FOR TERMS, RESTRICTIONS, AND CONDITIONS ESTABLISHED FOR THE DEVELOPMENT OF THIS PROPERTY.

OWNERS:

LUXURY DEVELOPMENT PARTNERS, INC.

BY William J. Warren
 WILLIAM J. WARREN, PRESIDENT

STATE OF KANSAS)
 COUNTY OF SEDGWICK) SS

THIS INSTRUMENT WAS ACKNOWLEDGED BEFORE ME THIS 4th DAY OF December, 1996, BY WILLIAM J. WARREN, PRESIDENT OF LUXURY DEVELOPMENT PARTNERS, INC.

Gary L. Wiley, NOTARY PUBLIC
 GARY L. WILEY
 MY COMMISSION EXPIRES Jan 15, 1997



WE, INTRUST BANK, N.A., WICHITA, KANSAS, HOLDER OF A MORTGAGE ON THE ABOVE DESCRIBED PROPERTY, DO HEREBY CONSENT TO THE PLATTING OF THE MANHATTAN ADDITION TO SEDGWICK COUNTY, KANSAS.

BY Bruce A. Long
 BRUCE A. LONG, VICE PRESIDENT

STATE OF KANSAS)
 COUNTY OF SEDGWICK) SS

THIS INSTRUMENT WAS ACKNOWLEDGED BEFORE ME THIS 14th DAY OF December, 1996, BY BRUCE A. LONG, VICE PRESIDENT OF INTRUST BANK, N.A., WICHITA, KANSAS.

Gary L. Wiley, NOTARY PUBLIC
 GARY L. WILEY
 MY COMMISSION EXPIRES Jan 15, 1997



THIS PLAT HAS BEEN SUBMITTED TO AND APPROVED BY THE WICHITA-SEDGWICK COUNTY METROPOLITAN AREA PLANNING COMMISSION, WICHITA, KANSAS. DATED THIS 15TH DAY OF FEBRUARY, 1996.

Susan Osborne-Howes, CHAIRMAN
 SUSAN OSBORNE-HOWES
Marvin S. Krout, SECRETARY
 MARVIN S. KROUT



THIS PLAT APPROVED ALL DEDICATIONS SHOWN HEREON ARE ACCEPTED BY THE CITY COUNCIL OF THE CITY OF WICHITA, KANSAS. DATED THIS 14th DAY OF JANUARY, 1997.

Bob Knight, MAYOR
 BOB KNIGHT
Pat Burnett, DEPUTY CITY CLERK
 PAT BURNETT



THIS PLAT APPROVED AND ALL DEDICATIONS SHOWN HEREON ARE ACCEPTED BY THE BOARD OF COUNTY COMMISSIONERS OF SEDGWICK COUNTY, KANSAS. THIS 20th DAY OF Feb., 1997.

Thomas G. Winters, CHAIRMAN
 THOMAS G. WINTERS
Paul W. Hancock, CHAIR PRO-TEM
 PAUL W. HANCOCK

Betsy Gwin, COMMISSIONER
 BETSY GWIN

Melody Miller, COMMISSIONER
 MELODY MILLER

Mark F. Schroeder, COMMISSIONER
 MARK F. SCHROEDER

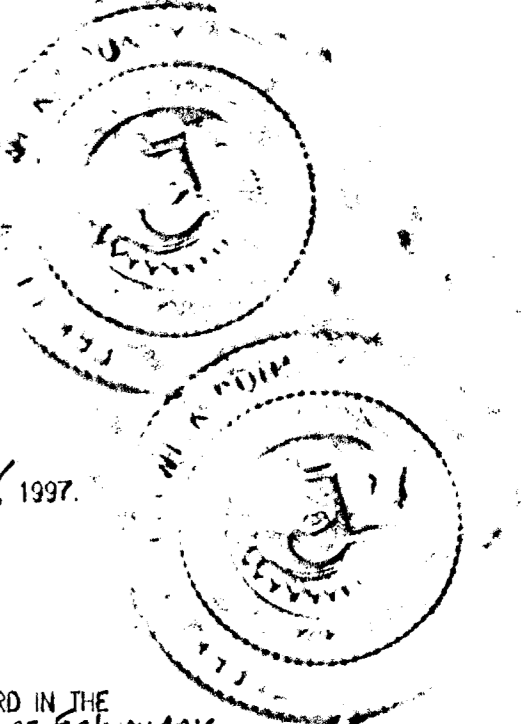
James Alford, COUNTY CLERK
 JAMES ALFORD

James Alford, COUNTY CLERK
 JAMES ALFORD

ENTERED ON TRANSFER RECORD THIS 24 DAY OF February, 1997.

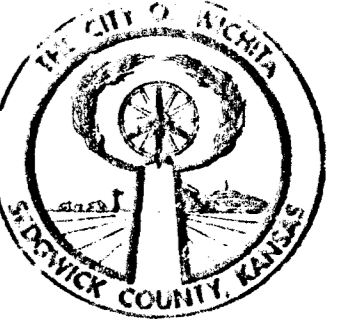
Larry L. Gonsolver, REGISTER OF DEEDS
 LARRY L. GONSOLVER

Michael D. Hurtt, DEPUTY
 MICHAEL D. HURTT



CONSENT IS HEREBY GIVEN FOR THE FORMATION OF BENEFIT DISTRICTS WITHIN THE BOUNDARY OF THIS PLAT BY THE BOARD OF COUNTY COMMISSIONERS AS THEY DEEM NECESSARY TO MAKE STREET IMPROVEMENTS TO SERVE THIS AREA, THIS 14th DAY OF JANUARY, 1997.

Bob Knight, MAYOR
 BOB KNIGHT
Pat Burnett, CITY CLERK
 PAT BURNETT



20
 ck

18 01 50 11