

PLAN	CHECKED	CHECKED
BY		
DATE		

PROFILE	CHECKED	CHECKED
BY		
DATE		

Sheet 06-15-2006 12:56:08 PM by AEE  
 Plot Scale 1:20 06-15-2006 1:26:14 PM by AEE  
 C:\2006\0615\061515-003-04\_3-260-00

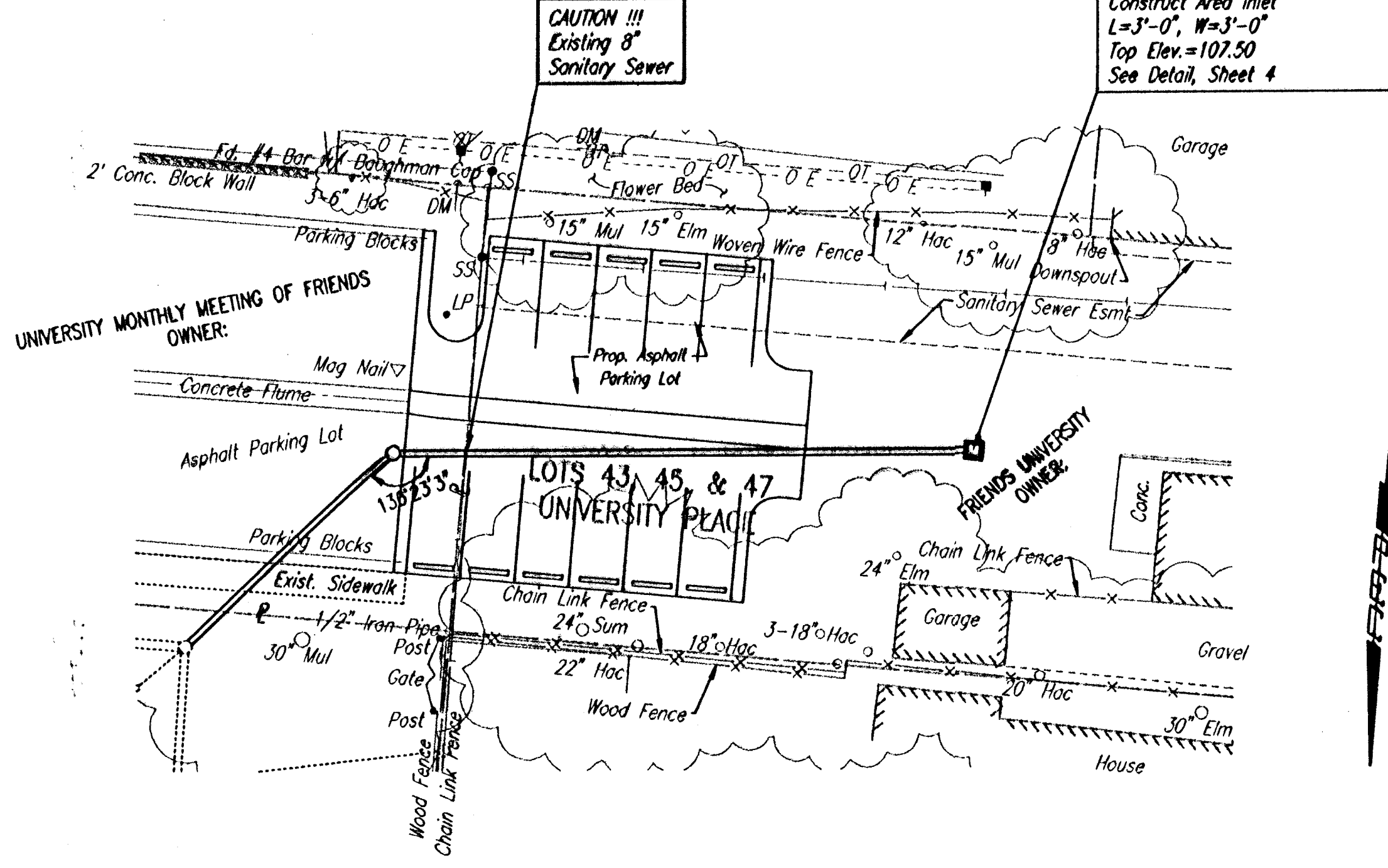
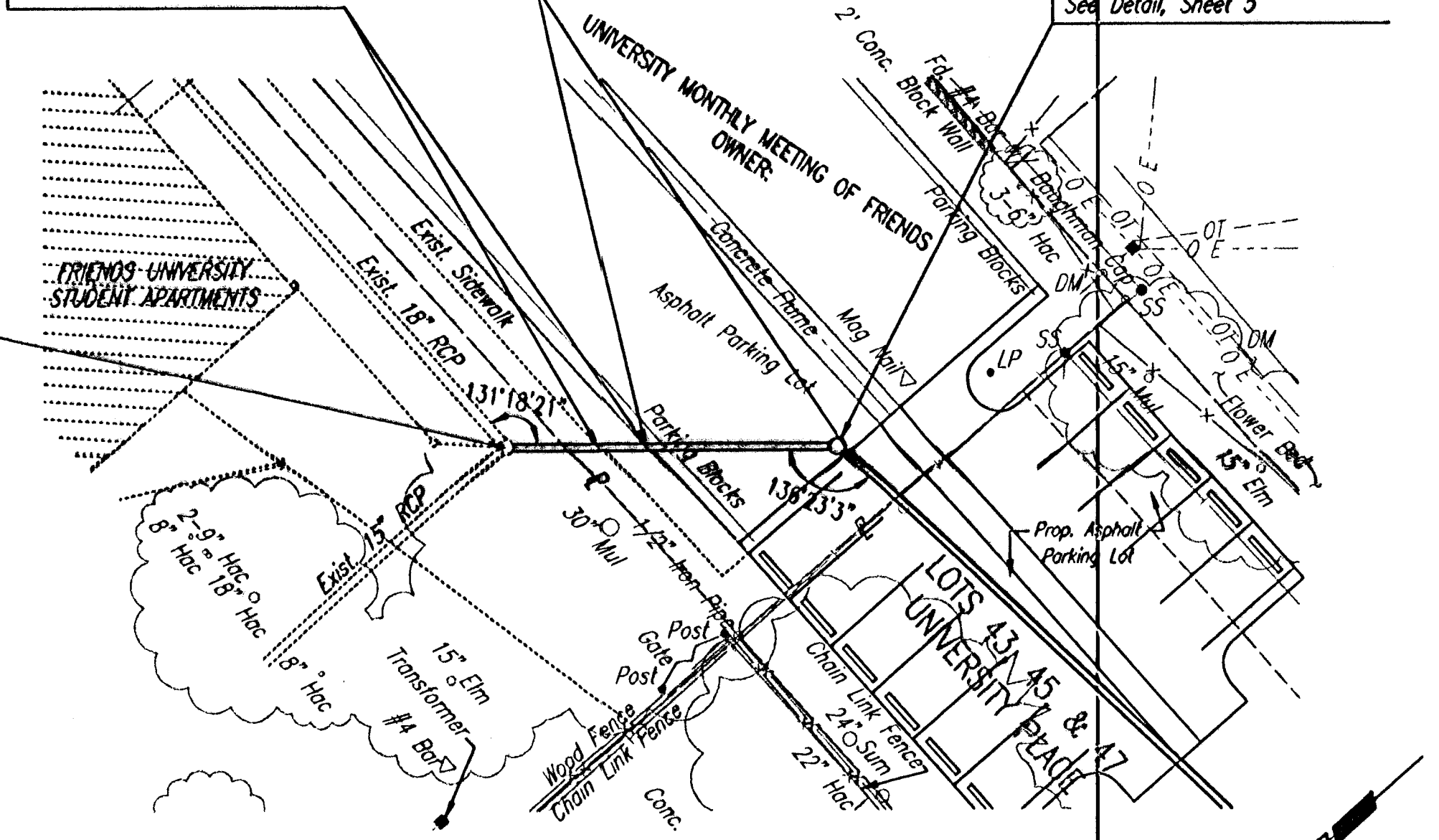
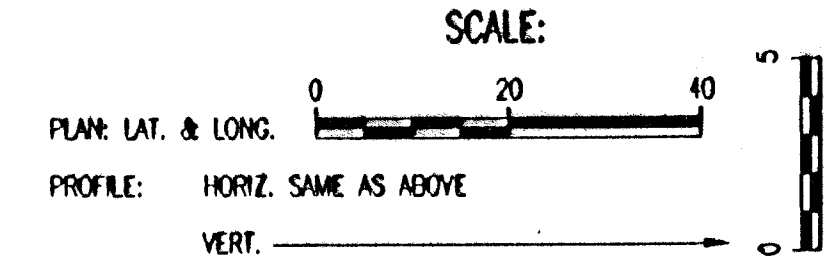
N-9,795.9564, E-9,836.9836  
 Sta. 0+00.00 SWS Line No. 1  
 \*Exist. Manhole  
 Core existing concrete MH wall and  
 install New 12" Pipe. Seal new 12" Pipe  
 to MH with an approved waterstop  
 gasket and non-shrink grout.  
 Construct a minimum of 3" Reinforced  
 Concrete Encasement from MH wall.  
 Reshape MH floor to provide smooth  
 flow.  
 Install 47.72 L.F. 12" RCP (SW)

Sta. 0+13.32 to Sta. 0+20.03  
 Remove and replace  
 7 L.F. Concrete  
 Sidewalk in kind.

Sta. 0+20.03 to Sta. 0+51.63  
 Remove and replace  
 32 L.F. Asphalt  
 Pavement in kind.

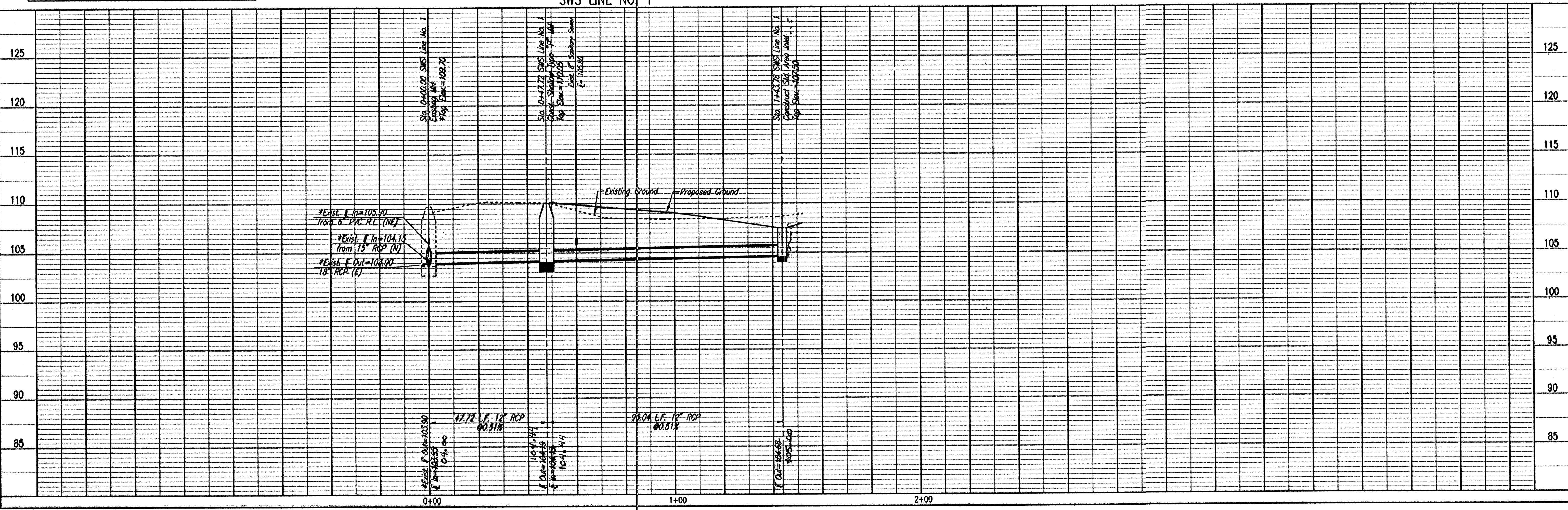
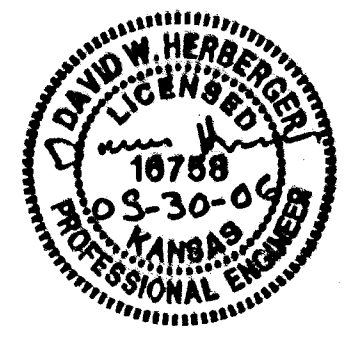
N-9,760.2341, E-9,805.3410  
 Sta. 0+47.72 SWS Line No. 1  
 Const. Shallow Type "P" MH  
 Dia.=4'-0"  
 Top Elev.=110.05  
 Install 98.04 L.F. 12" RCP (W)  
 See Detail, Sheet 5

N-9,752.1146, E-9,709.6448  
 Sta. 1+43.76 SWS Line No. 1  
 Construct Area Inlet  
 L=3'-0", W=3'-0"  
 Top Elev.=107.50  
 See Detail, Sheet 4



NOTE:  
 CONTRACTOR SHALL EXPOSE UTILITIES AND REPORT FINDINGS  
 TO THE ENGINEER. WORK SHALL BE ACCOMPLISHED PRIOR TO  
 ORDERING ANY MATERIALS, PIPING, OR STRUCTURES.

\* Existing manhole was installed by others. However, at the time  
 of survey the manhole did not exist. Manhole location and flow  
 line elevations shown are based on design documents. Contractor  
 to verify location and elevations.



Professional Engineering Consultants, P.A.  
 303 S. TOPEKA - WICHITA, KANSAS 67202  
 316-262-2691 • FAX 316-262-3003

City of Wichita, Kansas  
 Friends University Parking Lot  
**SWS LINE NO. 1**

James L. Armour, P.E. - CITY ENGINEER  
 CITY OF WICHITA, PRIVATE PROJECT NO. 1672, PPS. (607861)

Job No. 35-06193-003  
 Date May 2005

Designed By DMH  
 Drawn By AEE

Sheet 3 of 10