

PRIVATE STORM WATER DRAIN TO SERVE CONQUEST NORTH 2ND ADDITION PRIVATE PROJECT NUMBER 1657 PPS (607861)

1657 PPS
S.O.S

GENERAL NOTES

- Contractor will be required to provide a minimum advance notice of forty-eight (48) hours to utility companies prior to starting any excavation as follows:

Kansas One-Call	687-2470
-----------------	----------

The Contractor must notify the following in case of an emergency:

Cox Communications	262-0661
Kansas Gas Service	383-8600
Westar	383-8600
Aquila Energy	1-800-303-0357
Southwestern Bell Telephone Company	1-800-286-8313
City of Wichita Water Department	262-6000
City of Wichita Sewer Maintenance	262-6000
- Existing utilities and their location, as shown on the plans, represent the best information obtainable for design. Location information has been obtained from the various utility companies and is either from company record drawings or company-provided field locations. The Contractor will be required to work around existing utilities within the right-of-way which do not conflict with proposed construction.
- A saw cut of the full depth of existing surface courses or pavement thickness shall be provided at locations where proposed construction abuts an existing surface course or pavement for which partial removal of that surface or pavement is required, except when such saw cuts are within three (3) feet of an existing joint the limits of removal shall be extended to the existing joint.
- Rubble from the removal of miscellaneous structures and excess excavation which is to be wasted shall be disposed of on sites to be provided by the Contractor. These sites shall be approved by the Engineer as to suitability, appearance and site location. Locations that, in the opinion of the Engineer, will leave an unsightly appearance will not be approved.
- All disposal sites must be approved by the Kansas Department of Health and Environment. Material either stockpiled or disposed of in a flood plain would require a Kansas State Board of Agriculture permit. Any material dumped in waters of the United States or wetlands is subject to U.S. Corps permitting regulations. Any material buried or stockpiled beyond approved of Engineers construction limits would require additional archeological investigations unless buried in a previously approved borrow location.
- This project is to be constructed in accordance with City of Wichita Standard Specifications for the Construction of City Projects, and Policy on Construction of Public Works Improvements by Private Contract.
- No work shall begin on this project before required bonds are submitted to the City of Wichita, and the project inspector has been notified.
- All areas of public R/W disturbed by construction of this project are to be restored in accordance with Administrative Regulation AR 78 of the City of Wichita.
- Trench backfill to be compacted to minimum of 98% std. density (ASTM D-698) to existing grade.
- Traffic will not be affected by construction of this project.

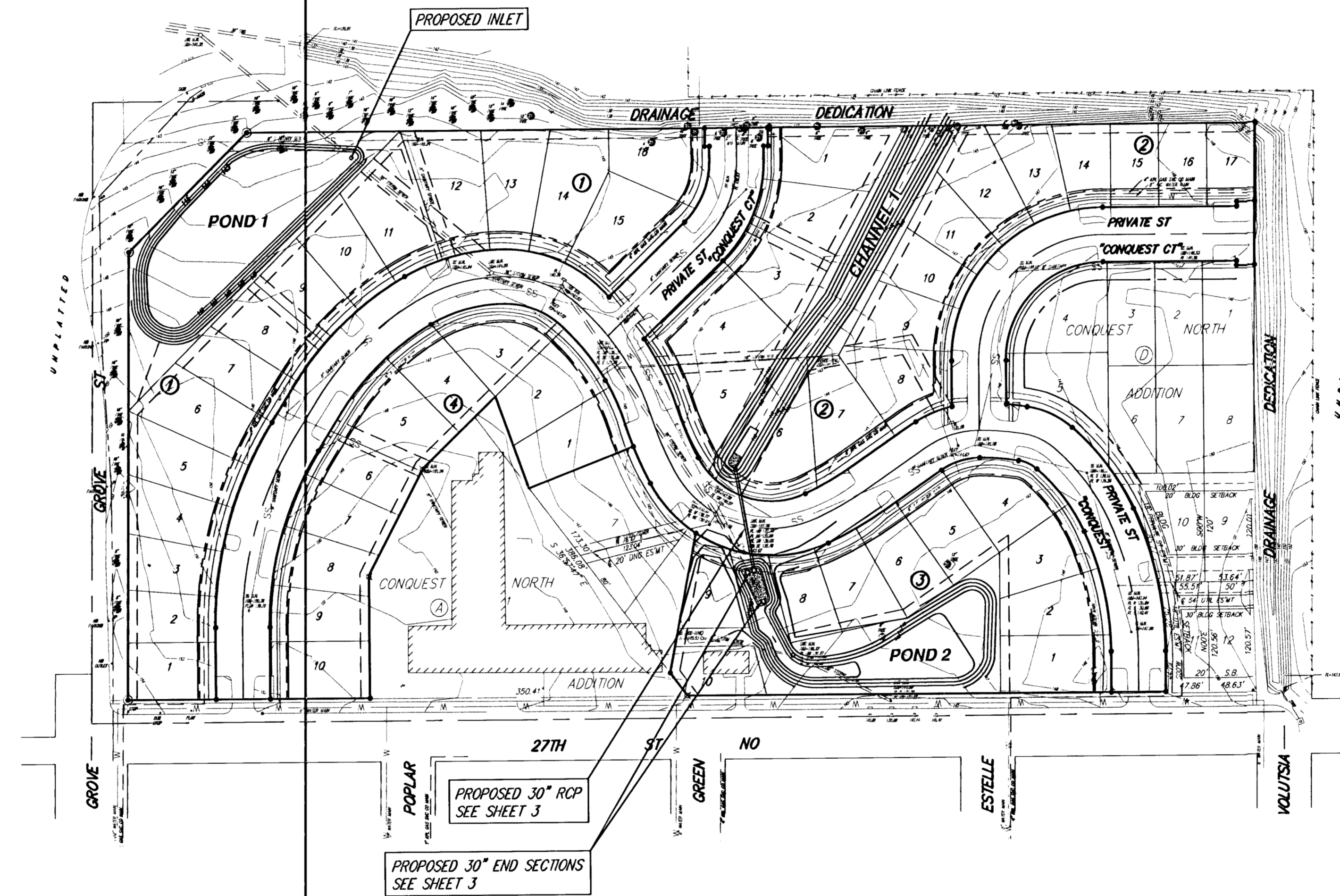
INDEX OF SHEETS

- INDEX SHEET
- MASS GRADING PLAN
- STORM DRAIN PLAN
- STANDARD TYPE P MANHOLE DETAILS
- EROSION CONTROL PLAN
- EROSION CONTROL DETAILS

BENCHMARKS

BENCH MARK:
CITY STANDARD DISC @ 25TH ST NO
& GROVE; 41' S & 21.5' E OF THE
CENTER-LINE OF BOTH
ELEVATION = 141.65 CITY DATUM
ELEVATION = 1329.05 MSL

BENCH MARK:
SQUARE CUT ON TOP OF CURB @
27TH ST NO & GROVE; NORTH
END OF CURB RETURN @ N.E. COR
OF INTERSECTION
ELEVATION = 154.76 CITY DATUM
ELEVATION = 1342.16 MSL

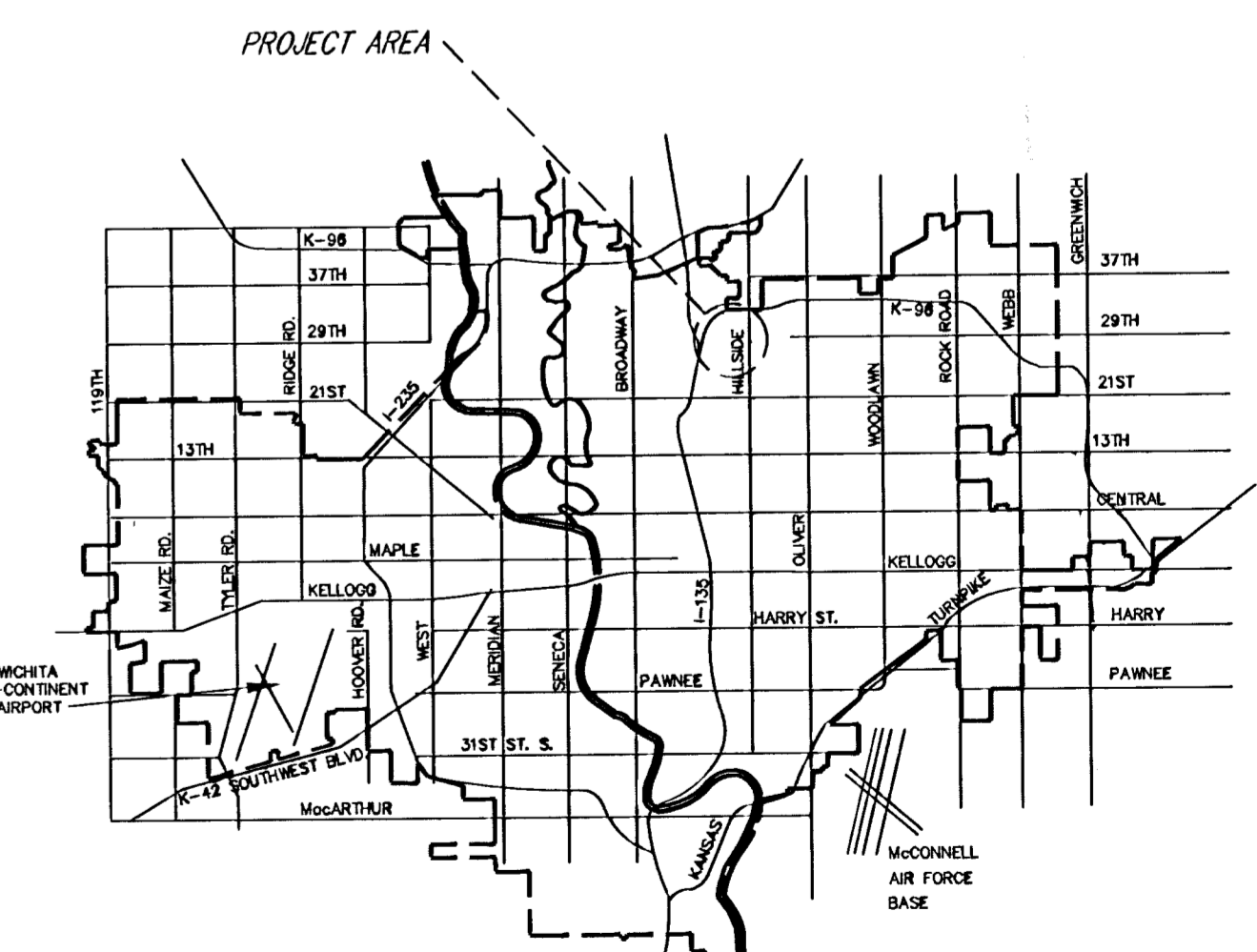


APPROVED AS NOTED
BY CITY ENGINEER OF WICHITA

Sanitary Sewers _____
Storm Sewers JCA 11-7-06
Driveway Approaches _____
Water Mains _____
Paving _____

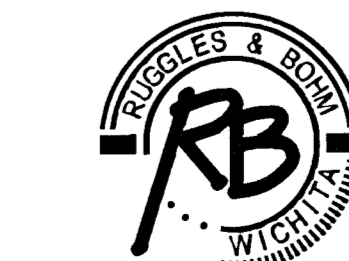
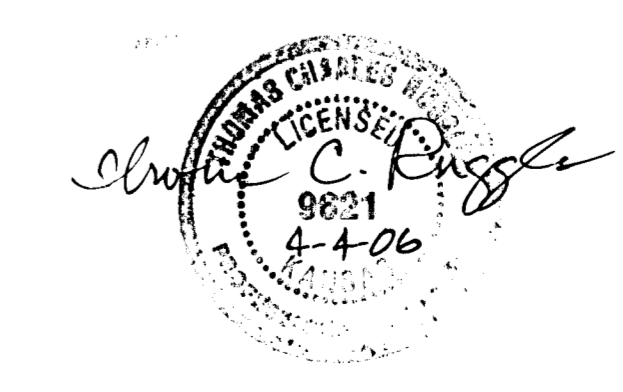
NOTE TO CONTRACTORS

Inspection and testing for this project are to be provided by a Licensed Consulting Engineering Firm under contract with the Owner/Developer. Said inspection to be in accordance with the City of Wichita standard construction engineering practices and certified by a Licensed Professional Engineer. No work shall be performed in dedicated easements or public right-of-way by the Contractor without such inspection, nor shall any work be commenced without written authorization by the City Engineer.



"AS BUILT"
7-28-06
R+B E
SHEET 3 ONLY CHANGE

CITY OF WICHITA, KANSAS
JAMES L. ARMOUR, P.E., CITY ENGINEER



Ruggles & Bohm, P.A.
Engineering, Surveying, Land Planning
924 North Main
Wichita, Kansas 67203
www.rbkansas.com
(316) 264-8008
(316) 264-4621 fax
E-mail: info@rbkansas.com