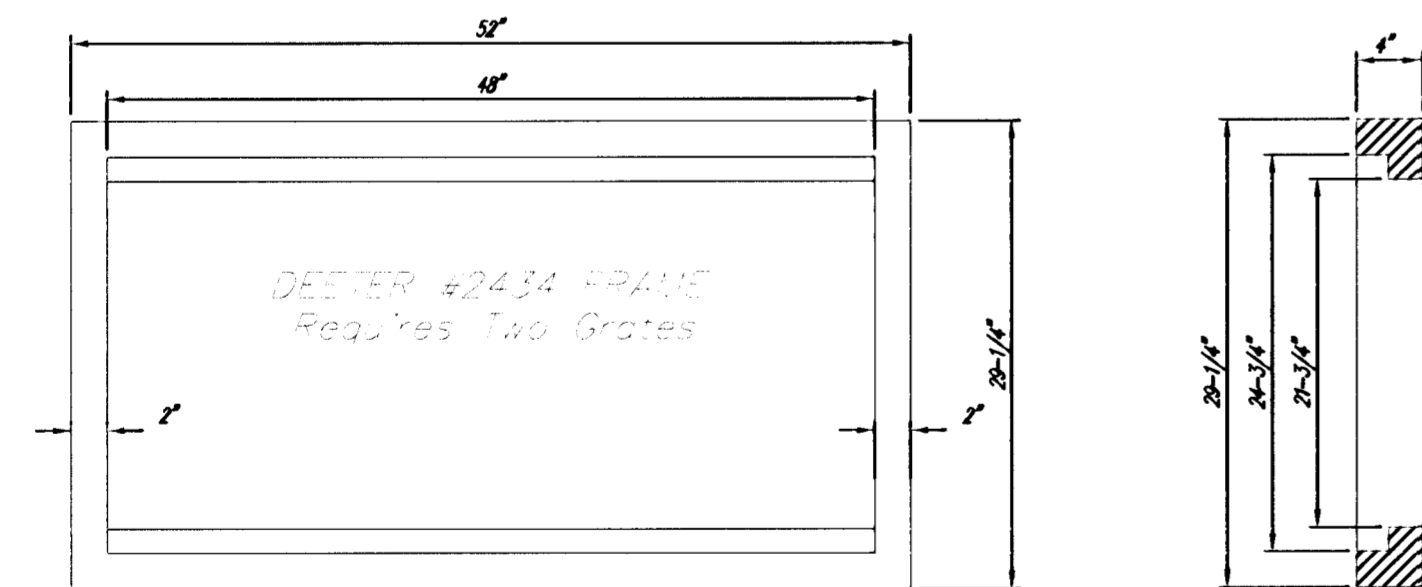


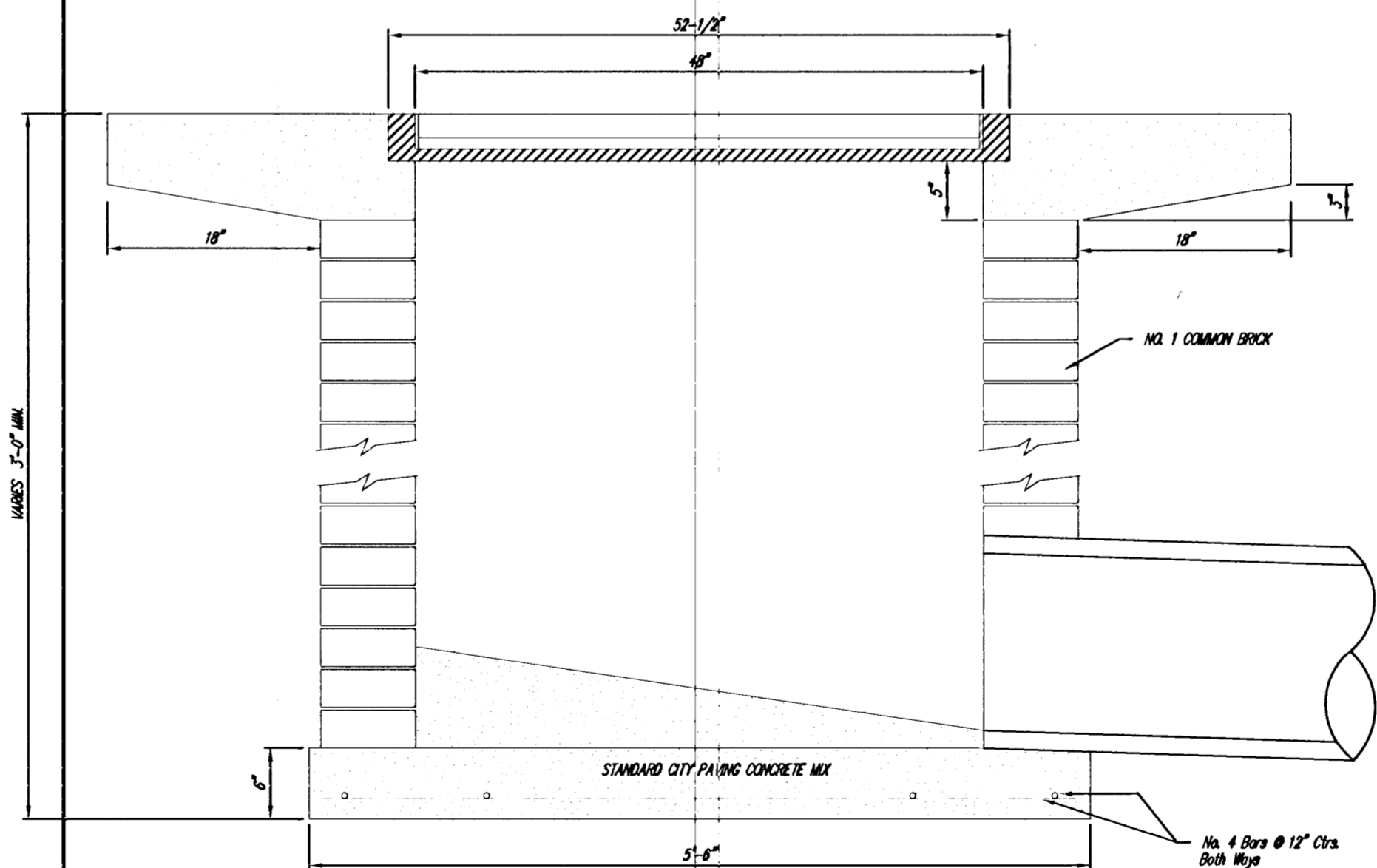
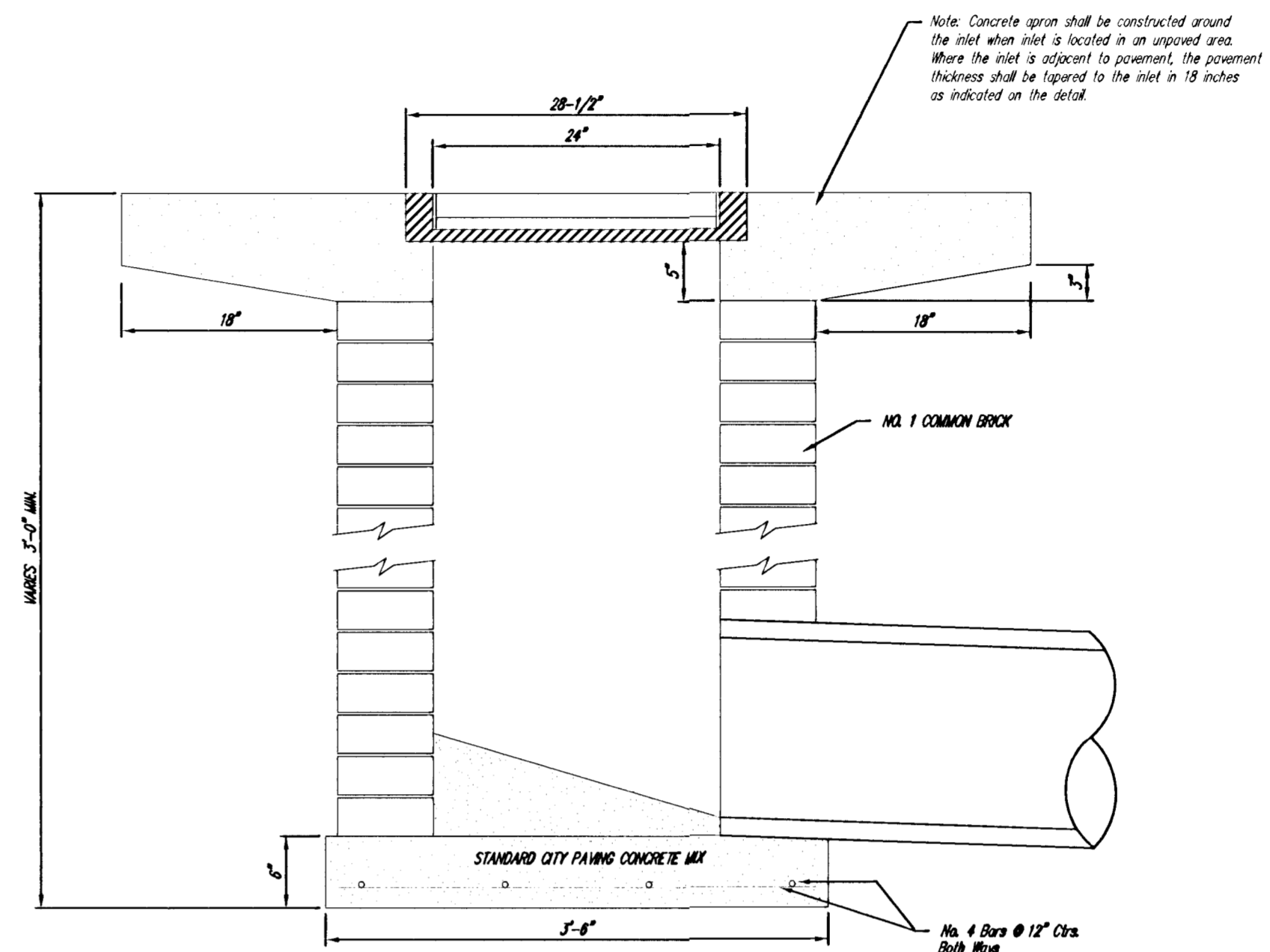
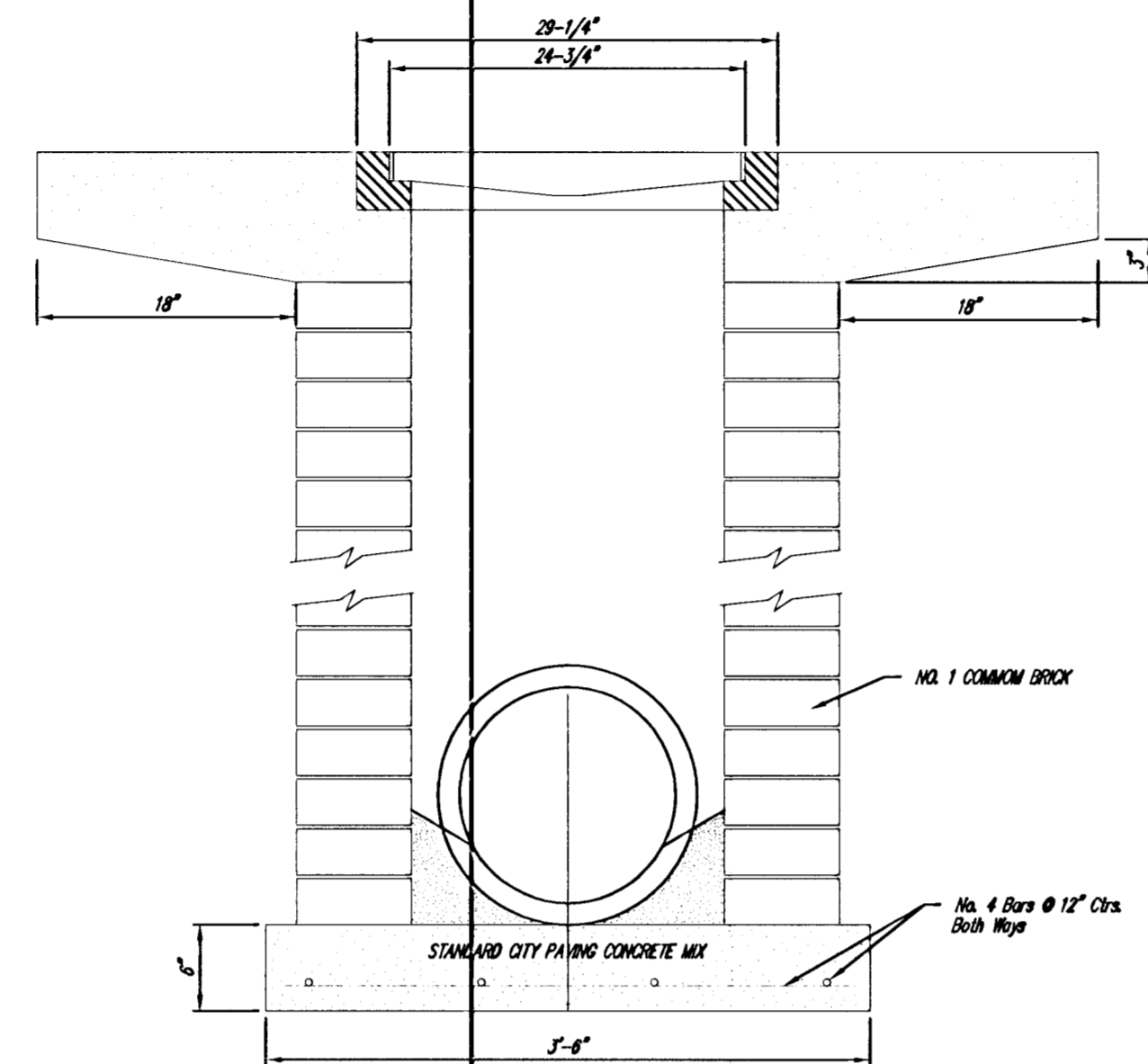
DEETER #2433 GRATE

24" x 24" Frame and Grate Detail



Double 24" x 24" Frame Detail

NOTE: Grates shall be imprinted on the top surface with "CITY OF WICHITA" using letters at least 1" in height. Other marking methods may be approved by the engineer.



<p>THE CITY OF WICHITA</p> <p>CITY ENGINEER'S OFFICE CITY HALL, SEVENTH FLOOR 408 NORTH MAIN STREET WICHITA, KANSAS 67202 (316) 268-4114 FAX</p>	<p>DROP INLET 2' X 2'/2' X 4'</p>	
	<p>M. E. LINDEBAK P.E. - CITY ENGINEER</p>	
<p>DESIGNED BY: T. Austin/S. Schmidt</p> <p>DRAWN BY: M. Myers</p> <p>FILE NO.: 815\base-sws.dwg</p> <p>DATE: JUNE 2006</p>	<p>PROJECT NUMBER</p>	<p>INDEX CODE</p>

DROP INLET DETAILS

<p>FINAL</p>	<p>Designed By: T. Austin/S. Schmidt</p>	<p>No. <input type="checkbox"/></p>	<p>Date <input type="checkbox"/></p>	<p>By <input type="checkbox"/></p>	<p>Approved <input type="checkbox"/></p>	<p>Revision <input type="checkbox"/></p>
	<p>Drawn By: M. Myers</p>	<p>No. <input type="checkbox"/></p>	<p>Date <input type="checkbox"/></p>	<p>By <input type="checkbox"/></p>	<p>Approved <input type="checkbox"/></p>	<p>Revision <input type="checkbox"/></p>
<p>MAY FIELD FIRST ADDITION STORM SEWER IMPROVEMENTS DROP INLET DETAILS CITY OF WICHITA, KANSAS JAMES ARMOUR, P.E. - CITY ENGINEER 1677 PPS (607861)</p>						
<p>POE & ASSOCIATES, INC. CONSULTING ENGINEERS 5940 E. Central, Suite 200 • Wichita, KS 67208-4242 Phone 316/685-4114 • FAX 316/685-4444</p>						
<p>3 of 8</p>						