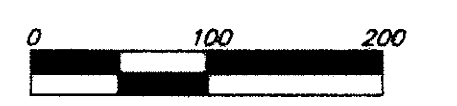
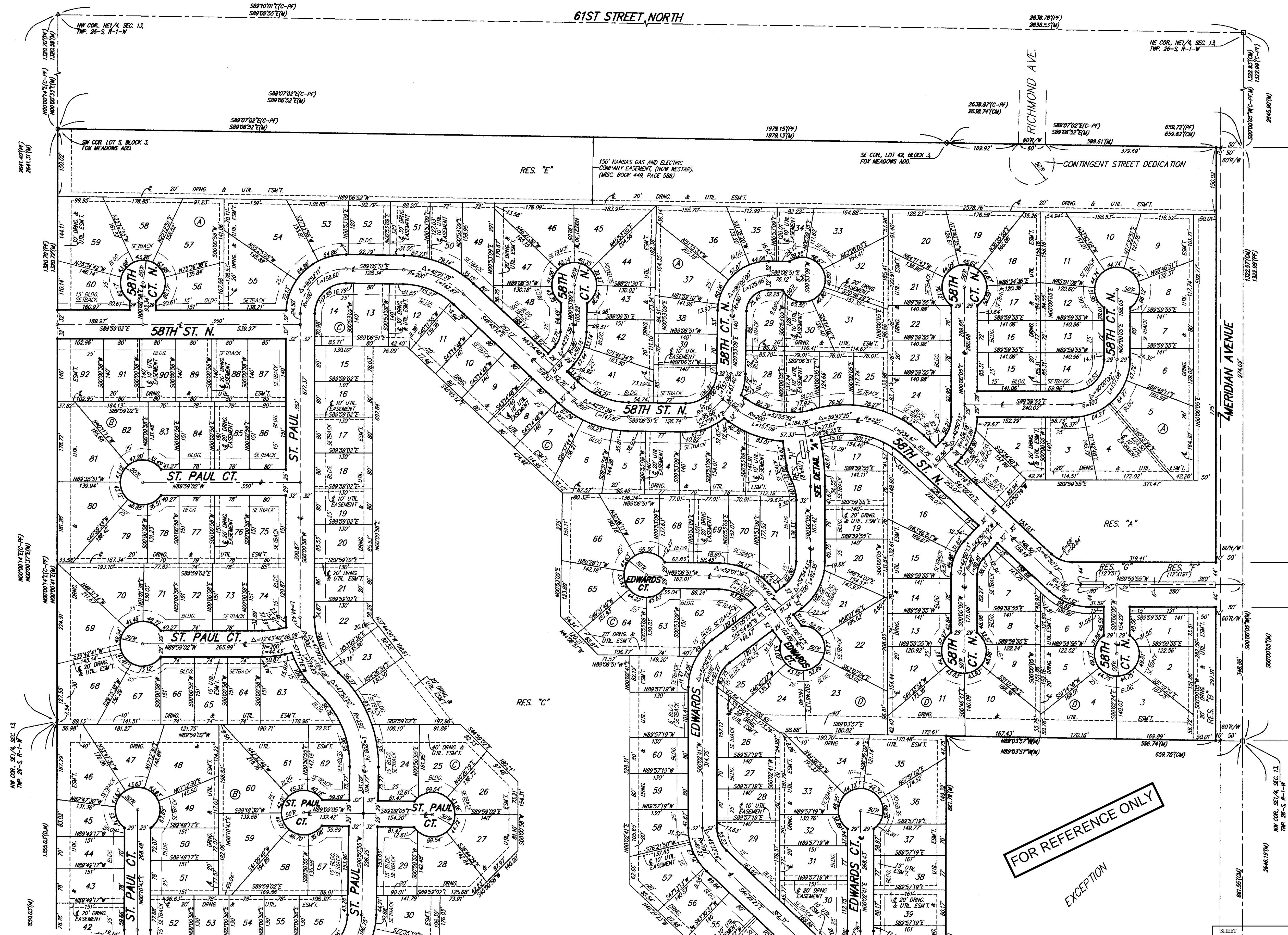


NORTHGATE ADDITION WICHITA, SEDGWICK COUNTY, KANSAS

61ST STREET NORTH



- = #4 REBAR W/ 'BAUGHMAN' SET (SET)
- = #4 REBAR W/ 'BAUGHMAN' CAP (FOUND)
- = 1" IRON (FOUND)
- = #5 REBAR (FOUND)
- = 1" SQUARE IRON BAR (FOUND)
- = #5 REBAR W/ ILLEGIBLE CAP (FOUND)

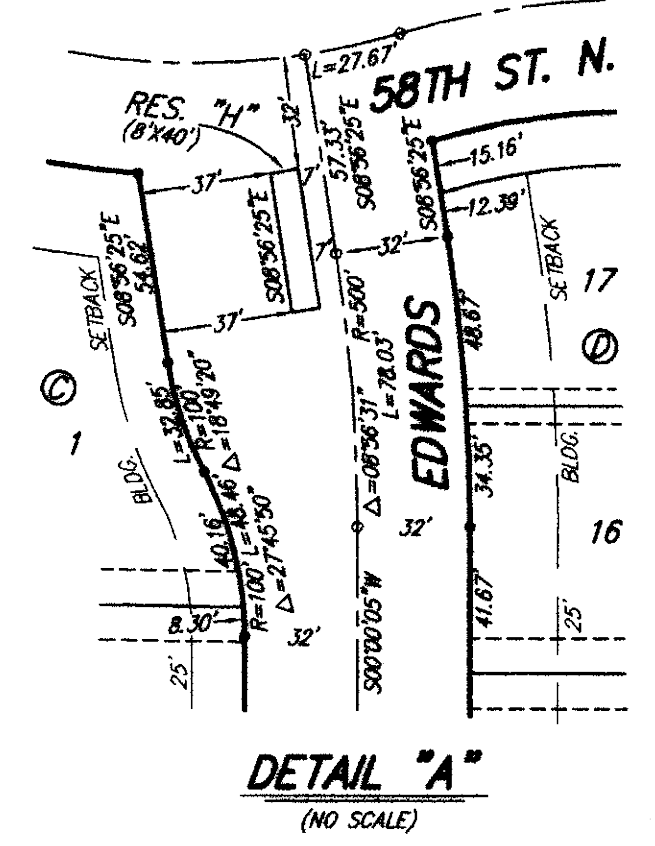
- (M) = MEASURED
- (D) = DESCRIBED
- (C) = CALCULATED
- (PF) = PLATTED INFO PER FOX MEADOW ADD.
- (C-PF) = CALCULATED INFO PER FOX MEADOW ADD.
- (CM) = CALCULATED PER MEASURED INFO.
- (C-D) = CALCULATED PER DESCRIBED INFO.

MINIMUM BUILDING PAD ELEVATIONS FOR LOWEST OPENING TO THE STRUCTURES		
LOT	BLOCK	ELEVATION
1-5	A	1337.0
6, 7, 13-22	B	1335.0
26, 27, 32, 33	B	1335.0
6-13, 15-28	C	1335.0
30-33, 43-52	C	1335.0
55-61, 64-66	C	1335.0
53, 54	C	1336.0

BENCHMARK:
BENT ROW NAIL IN LIGHT POLE.
55' SSM OF THE E 1/4 COR.
SEC. 13, TWP. 26-S, R-1-W.
ELEV. = 1336.54 NGVD29

RAILROAD SWM IN E. FACE OF N. 1/4 POLE.
60' S. OF N. LINE, S1/2, NE1/4, SEC. 13,
TWP. 26-S, R-1-W.
ELEV. = 1335.83 NGVD29

"C" CUT ON TOP OF NE COR. OF WATER VAULT, 437' E. & 54' N. OF S1/4 COR., SEC. 13, TWP. 26-S, R-1-W.
ELEV. = 1334.81 NGVD29



FOR REFERENCE ONLY
EXCEPTION

NOTE:
A master grading plan for drainage has been developed for this subdivision and is on file with the City of Wichita, Kansas. All drainage easements, right-of-ways, or reserves shall remain as established grades or as modified with the approval of the City Engineer of the City of Wichita, Kansas. No obstructions which impede the flow of this drainage system be allowed.