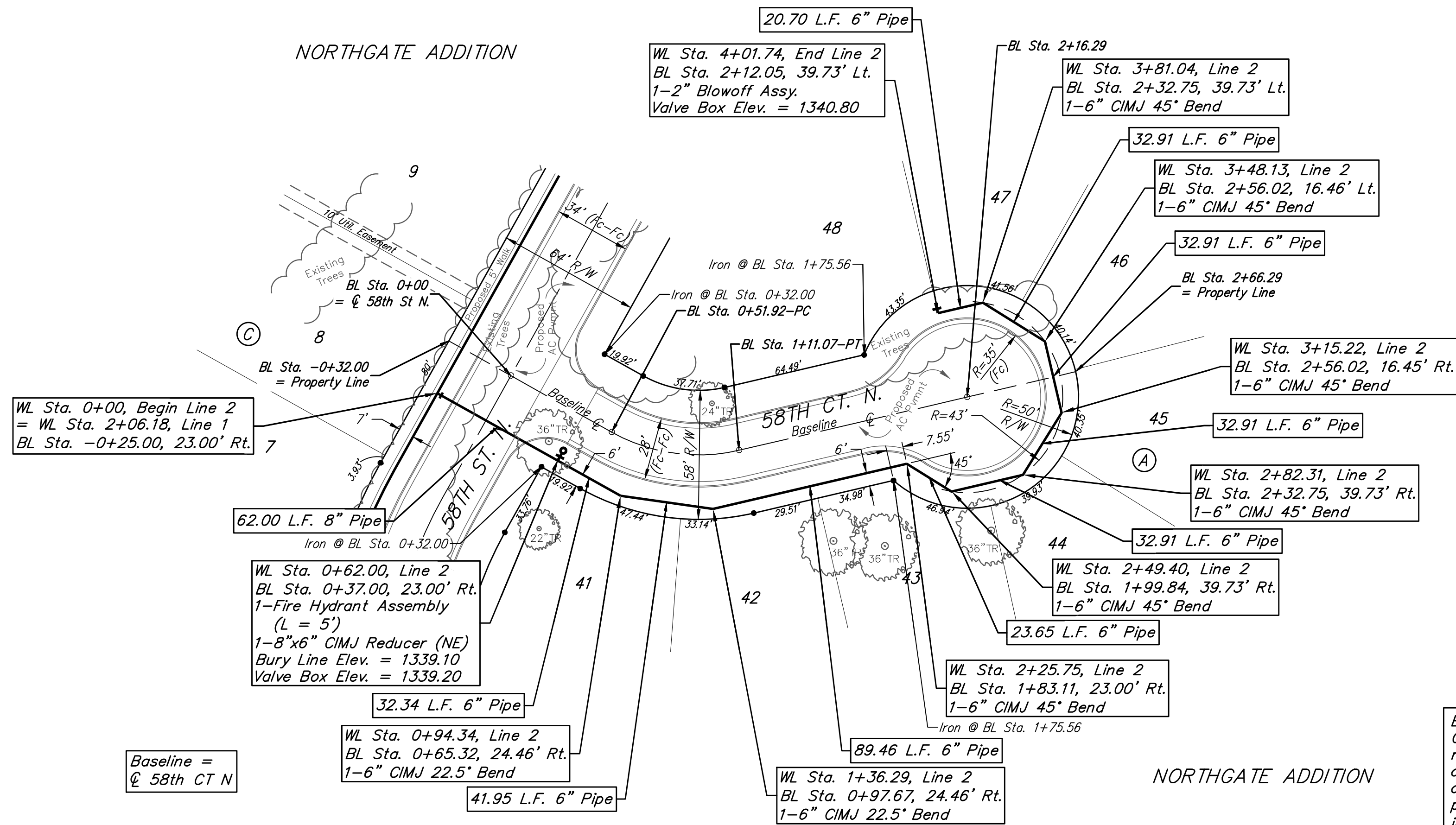


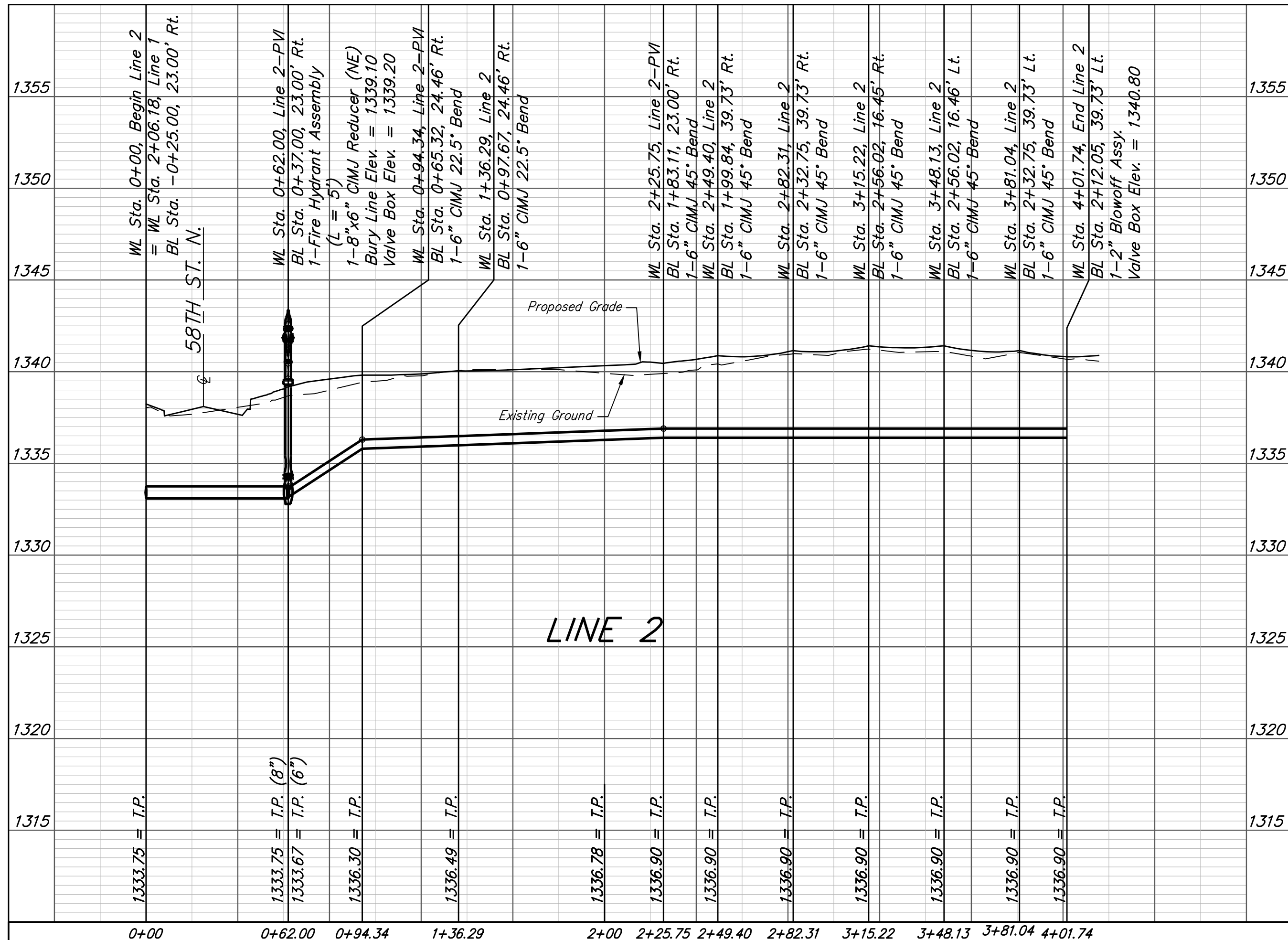
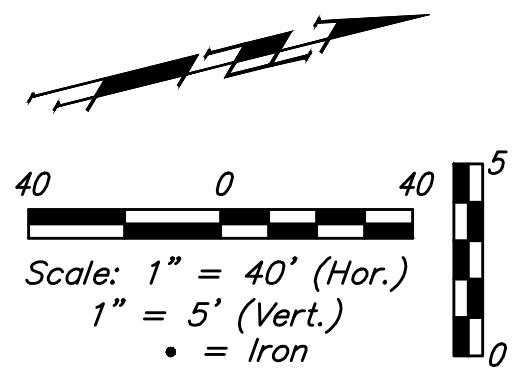
BENCHMARKS:
 BM #1: "□" Cut on top of SE Cor. of utility pad, adjacent to the SW Cor. Lot 40, Block A, Northgate Addition.
 Elev. = 1340.12 NGVD29

BM #2: "□" Cut on top of NE Cor. of water vault, 437± E. & 54± N. of S1/4 Cor., Sec. 13, TWP 26-S, R-1-W.
 Elev. = 1334.81 NGVD29

BM #3: "□" Cut on top of curb, adjacent to the SW Cor. Lot 17, Block D, Northgate Addition.
 Elev. = 1338.47 NGVD29



Existing trees shall be removed by the Contractor only as **ABSOLUTELY** necessary for construction. Trees not in direct conflict with proposed new construction shall remain and be protected from damage. Cost to be included in bid item "Site Clearing"



	Northgate Addition - Phase 2A	
	LINE 1 Water Distribution System	
Baughman Company, P.A. 315 Ellis St. Wichita, KS 67211 P 316-262-7271 F 316-262-0149 ENGINEERING SURVEYING PLANNING LANDSCAPE ARCHITECTURE		
PROJECT NUMBER 448-90243	DESIGN DMV	DRAWN JAK
REVISIONS:	APPROVED	DATE 8/20/18
	SCALE Noted	SHEET
5 OF 13		