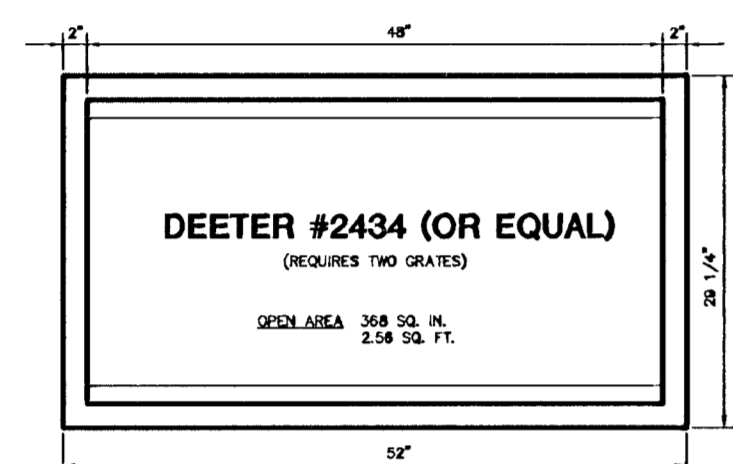


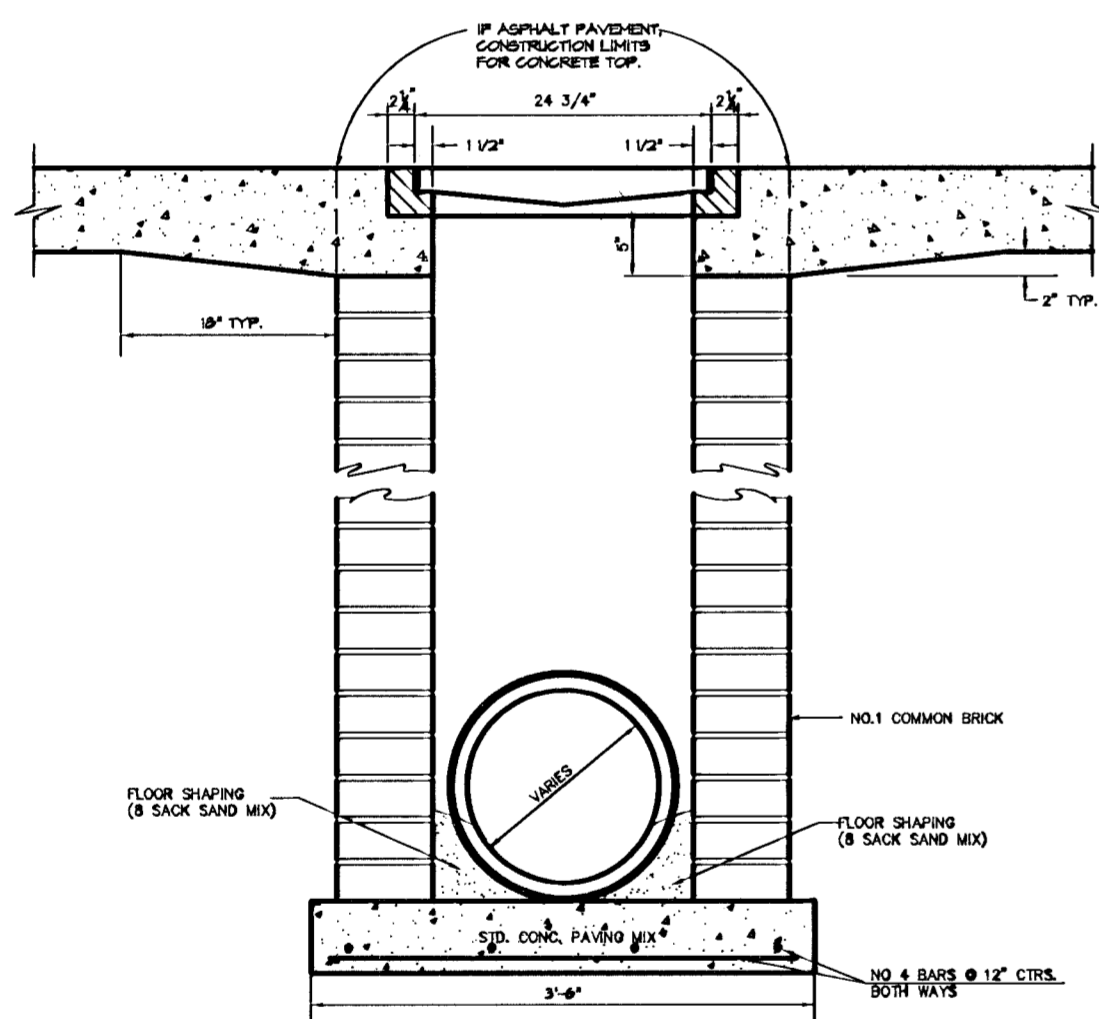
APPROVED AS NOTED
 BY CITY ENGINEER OF WICHITA
 STORMWATER SEWER URH 9/22/00

NOTE TO CONTRACTOR

INSPECTION AND TESTING FOR THIS PROJECT IS TO BE PROVIDED BY A LICENSED CONSULTING ENGINEERING FIRM UNDER CONTRACT WITH THE OWNER/DEVELOPER. SAID INSPECTION TO BE IN ACCORDANCE WITH THE CITY OF WICHITA STANDARD CONSTRUCTION ENGINEERING PRACTICES AND CERTIFIED BY A LICENSED PROFESSIONAL ENGINEER. NO WORK SHALL BE PERFORMED IN DEDICATED EASEMENTS OR THE PUBLIC RIGHT-OF-WAY BY THE CONTRACTOR WITHOUT SUCH INSPECTION NOR SHALL ANY WORK BE COMMENCED IN DEDICATED EASEMENTS OR PUBLIC RIGHT-OF-WAY WITHOUT WRITTEN AUTHORIZATION BY THE CITY ENGINEER.

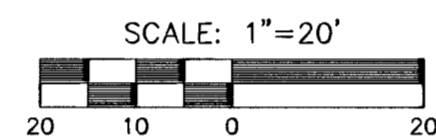
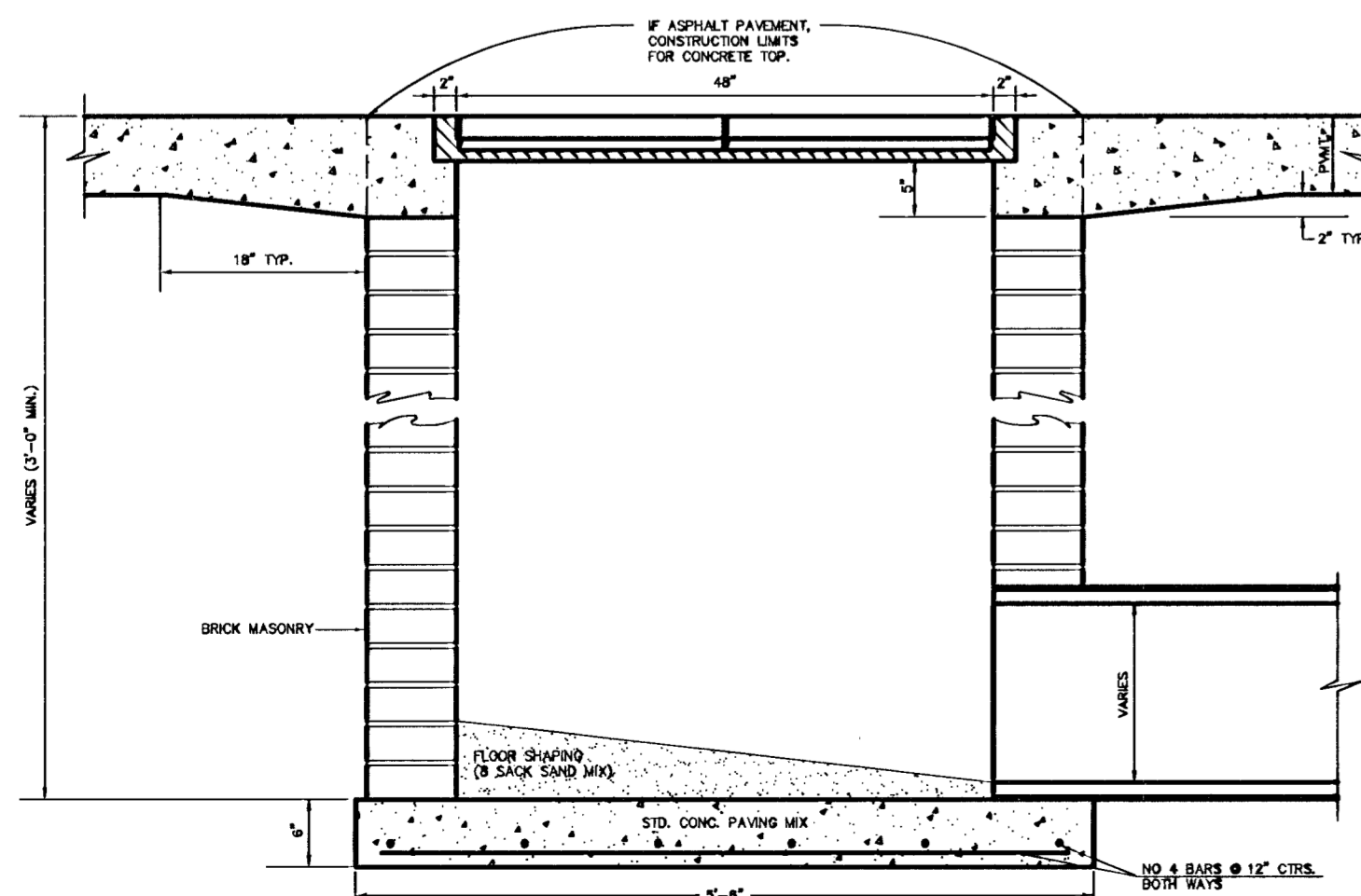


DOUBLE 24"x24" FRAME DETAIL



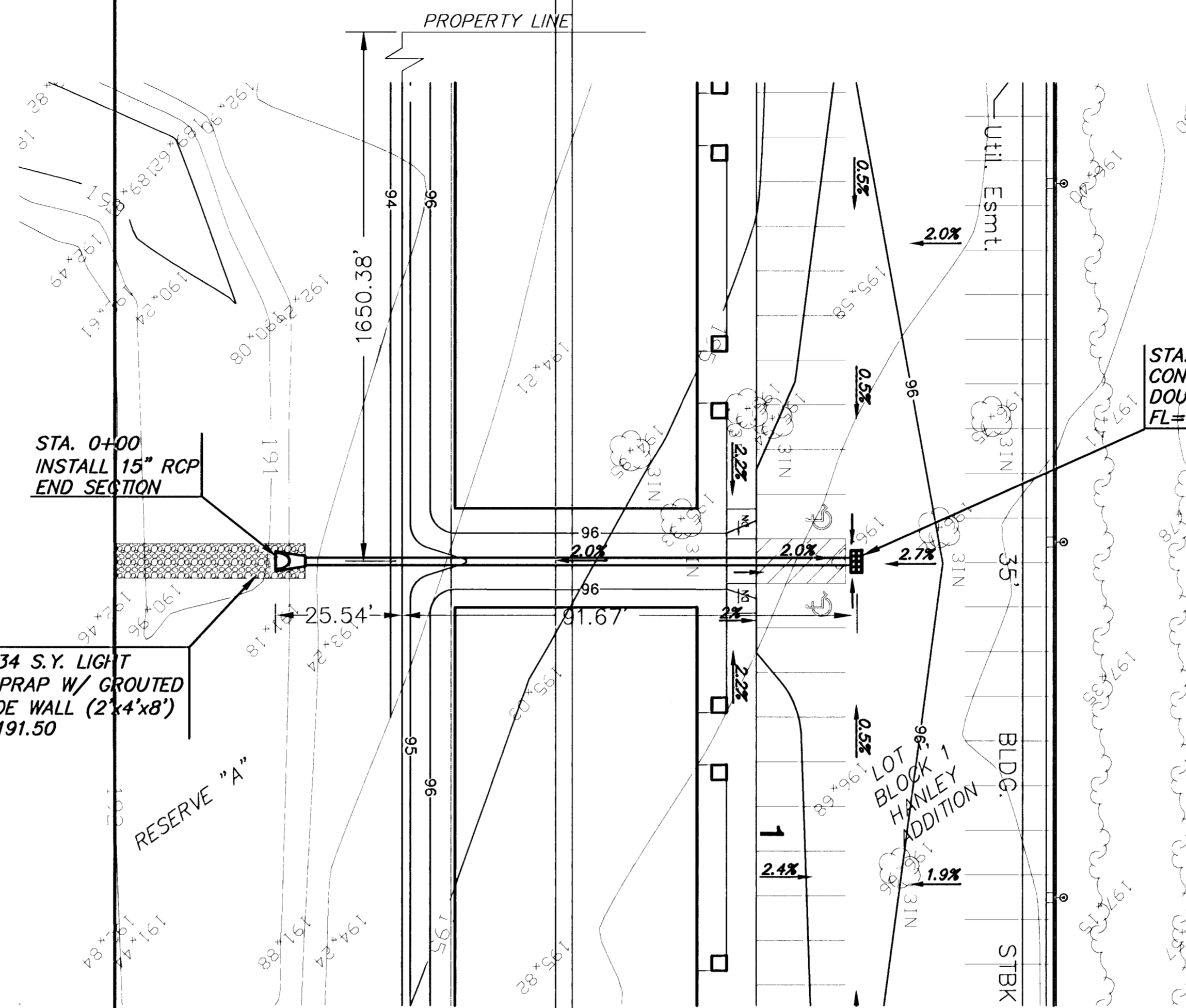
24"x24" GRATE DETAIL

NOTE: GRATES SHALL BE IMPRINTED ON THE TOP SURFACE WITH "CITY OF WICHITA" USING LETTERS AT LEAST 1" IN HEIGHT. OTHER MARKING METHODS MAY BE USED ONLY IF APPROVED BY THE ENGINEER.



INSTALL 34 S.Y. LIGHT STONE RIPRAP W/ GROUTED STONE TOE WALL (2'x4'x8')
 FL OUT=191.50

STA. 0+00
 INSTALL 15" RCP
 END SECTION



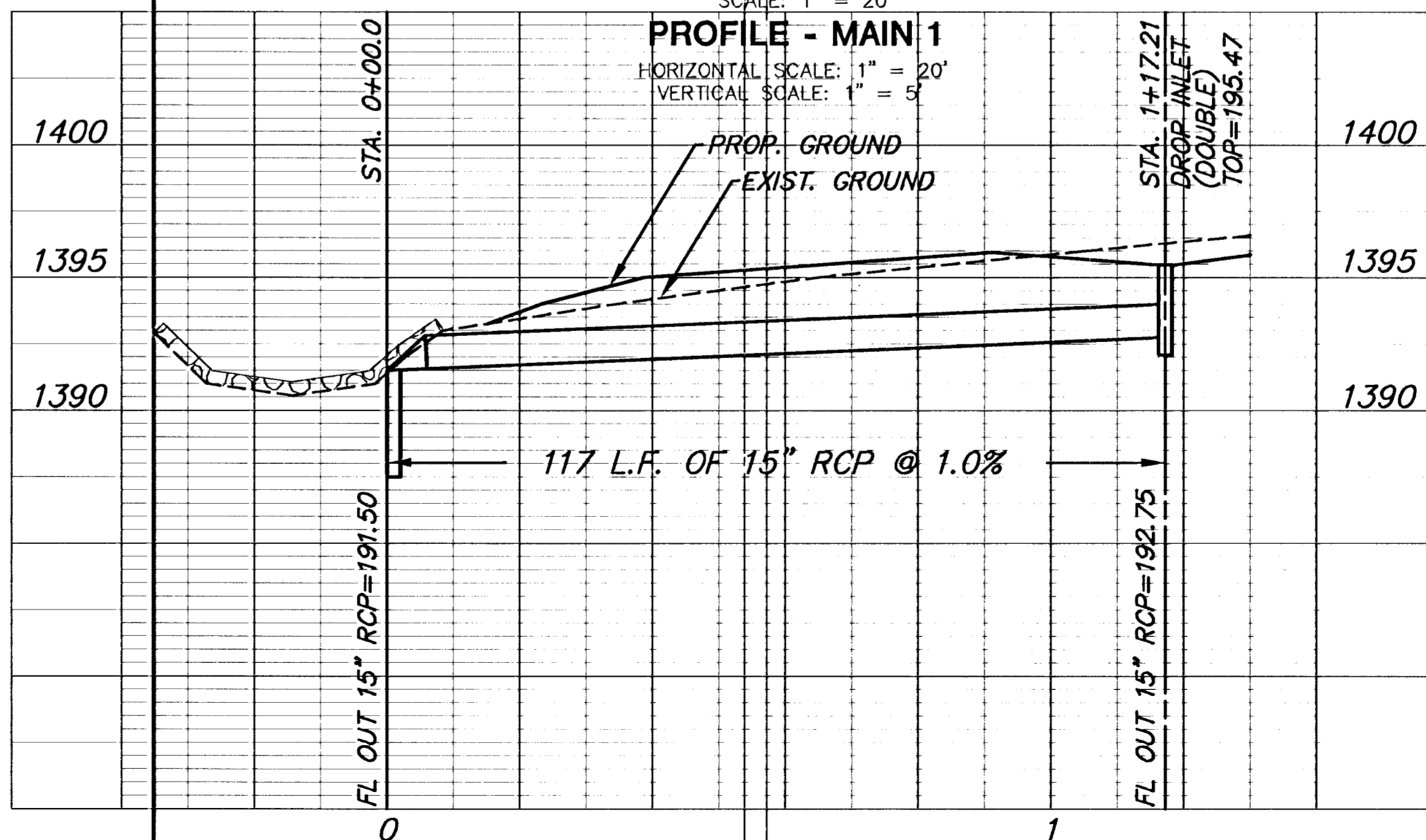
PLAN - MAIN 1

SCALE: 1" = 20'

PROFILE - MAIN 1

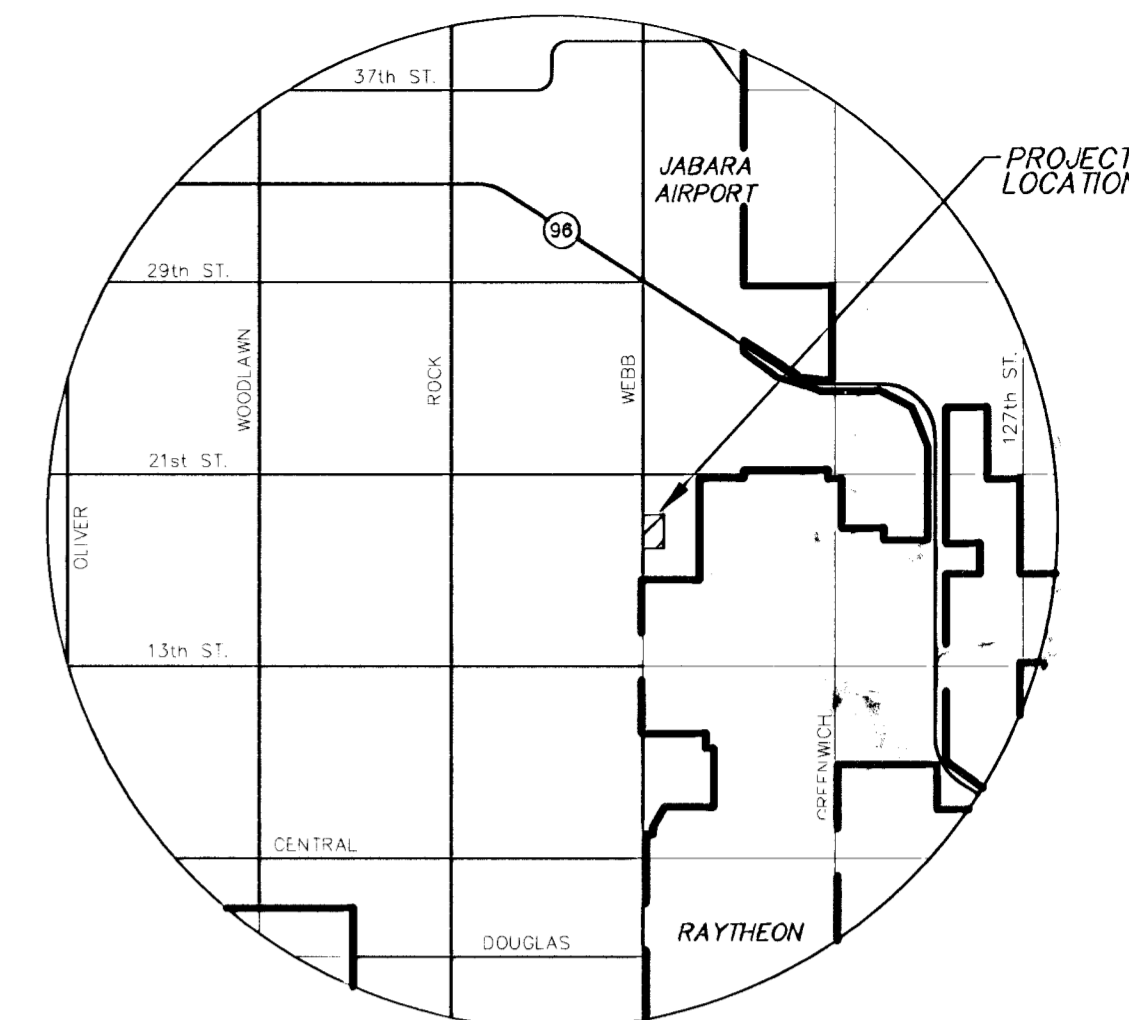
HORIZONTAL SCALE: 1" = 20'

VERTICAL SCALE: 1" = 5'



BENCHMARKS

- BM#1 CITY OF WICHITA BENCH MARK DISC IN NE CORNER CONCRETE VAULT, 400' N - WEST OF WEBB RD ON NORTH SIDE OF 21ST STREET
 ELEV. = 205.70
- BM#2 "□" CUT ON NE CORNER HEADWALL OF RCB 853' SOUTH AND 50' EAST OF SECTION CORNER AT 21ST AND WEBB ROAD
 ELEV. = 198.03



GENERAL NOTES

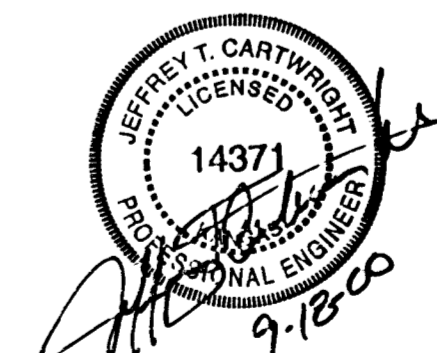
- THE CONTRACTOR SHALL BE RESPONSIBLE FOR PRESERVING PROPERTY IRONS. THE CONTRACTOR WILL BE REQUIRED TO RE-ESTABLISH ANY PROPERTY IRONS WHICH ARE DAMAGED OR DESTROYED BY THEIR CONSTRUCTION OPERATIONS. SUCH IRONS SHALL BE RE-ESTABLISHED BY A LICENSED LAND SURVEYOR IN ACCORDANCE WITH STATE LAWS.
- EXISTING UTILITIES AND THEIR LOCATIONS, AS SHOWN ON THE PLANS REPRESENT THE BEST INFORMATION OBTAINABLE FOR DESIGN. LOCATION INFORMATION HAS BEEN OBTAINED FROM THE VARIOUS UTILITY COMPANIES AND IS EITHER FROM COMPANY RECORD DRAWINGS OR COMPANY PROVIDED FIELD LOCATIONS. THE PLAN LOCATIONS SHOWN ARE NOT GUARANTEED. ADDITIONAL EXISTING UTILITIES MAY ALSO BE ENCOUNTERED.
- CONTRACTOR WILL BE REQUIRED TO PROVIDE A MINIMUM ADVANCE NOTICE OF FORTY-EIGHT (48) HOURS TO UTILITY COMPANIES PRIOR TO STARTING ANY EXCAVATION AS FOLLOWS:

KANSAS ONE-CALL 1-800-344-7233
 or 687-2470 (LOCAL WICHITA)

THE CONTRACTOR MUST NOTIFY THE FOLLOWING IN CASE OF AN EMERGENCY:

SOUTHWESTERN BELL TELEPHONE COMPANY 1-571-2115
 CABLEVISION 262-4270 or 263-2061
 KANSAS GAS & ELECTRIC 264-1141
 CITY OF WICHITA SEWER MAINTENANCE 268-4071
 ARKLA GAS COMPANY 942-8350 OR 263-8161
 CITY OF WICHITA WATER DEPARTMENT 268-4908

- RUBBLE FROM THE REMOVAL OF MISCELLANEOUS STRUCTURES AND EXCESS EXCAVATION WHICH IS TO BE WASTED SHALL BE DISPOSED OF ON SITES TO BE PROVIDED BY THE CONTRACTOR. THESE SITES SHALL BE APPROVED BY THE ENGINEER AS TO SUITABILITY, APPEARANCE AND SITE LOCATION. LOCATIONS THAT, IN THE OPINION OF THE ENGINEER, WILL LEAVE AN UNSIGHTLY APPEARANCE WILL NOT BE APPROVED. ALL DISPOSAL SITES MUST BE APPROVED BY THE KANSAS DEPARTMENT OF HEALTH AND ENVIRONMENT. MATERIAL EITHER STOCKPILED OR DISPOSED OF IN A FLOOD PLAIN WOULD REQUIRE A KANSAS STATE BOARD OF AGRICULTURE PERMIT. ANY MATERIAL DUMPED IN WATERS OF THE UNITED STATES OR WETLANDS IS SUBJECT TO U.S. CORPS OF ENGINEERS PERMITTING REGULATIONS. ANY MATERIAL BURIED OR STOCKPILED BEYOND APPROVED CONSTRUCTION LIMITS WOULD REQUIRE ADDITIONAL ARCHAEOLOGICAL INVESTIGATIONS UNLESS BURIED IN A PREVIOUSLY APPROVED BORROW LOCATION.
- ALL DISTURBED AREAS TO BE SEEDED WITH A RYE GRASS AT A RATE OF 200 LBS/ACRE WITHIN 10 DAYS OF CONSTRUCTION. COST SHALL BE CONSIDERED SUBSIDIARY TO PROJECT.
- CONTRACTOR SHALL PROVIDE TEMPORARY SEDIMENT CONTROL AT ALL INLETS. SUCH CONTROL SHALL BE MAINTAINED UNTIL AND UPON GERMINATION OF SEEDING. ACCEPTABLE MEANS OF CONTROL SHALL BE APPROVED BY ENGINEER.



MKEC
 ENGINEERING CONSULTANTS
 411 N. WEBB ROAD
 WICHITA, KS. 67208
 316-684-9600

LOT 1, BLOCK 1, HANLEY ADDITION
 PROJECT NAME
PRIVATE STORM WATER SEWER
1048pps (807861)
 SHEET TITLE

JAG DESIGN BY: RKH DRAWN BY: JTC CHECKED BY:
 SEPTEMBER 2000 DATE: 00007 DRAWING NAME: 1 / 1 SHEET / OF