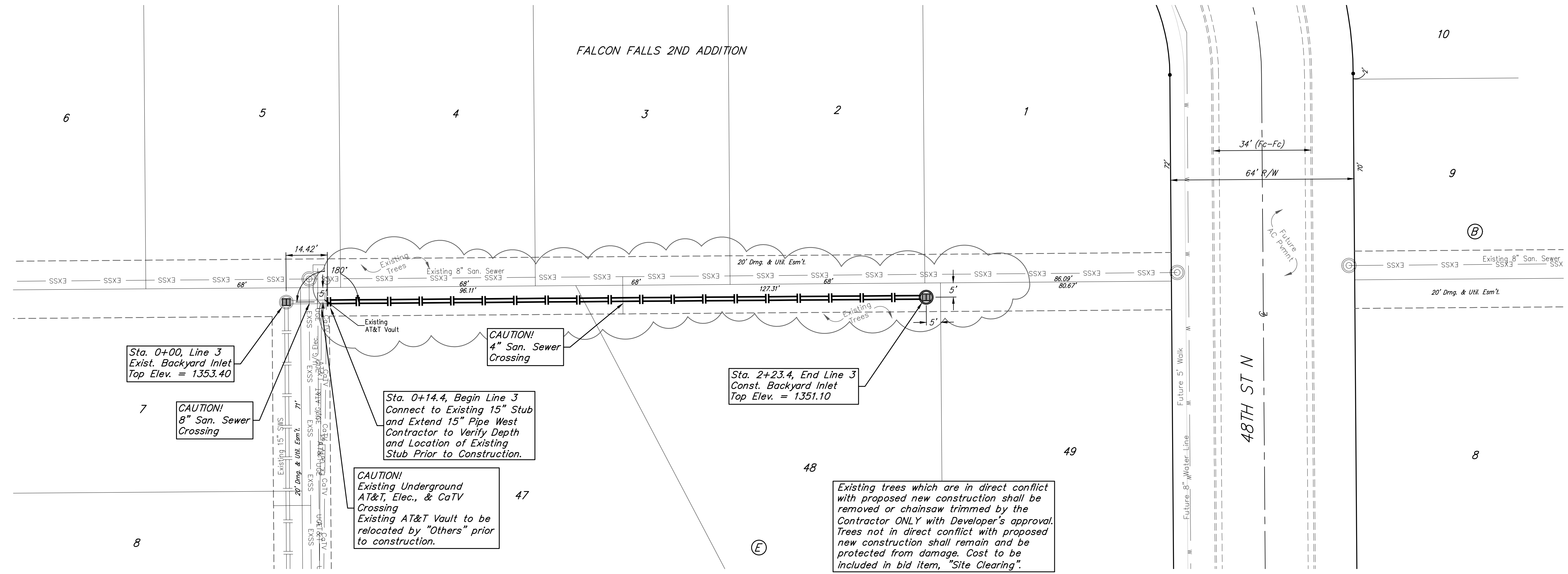
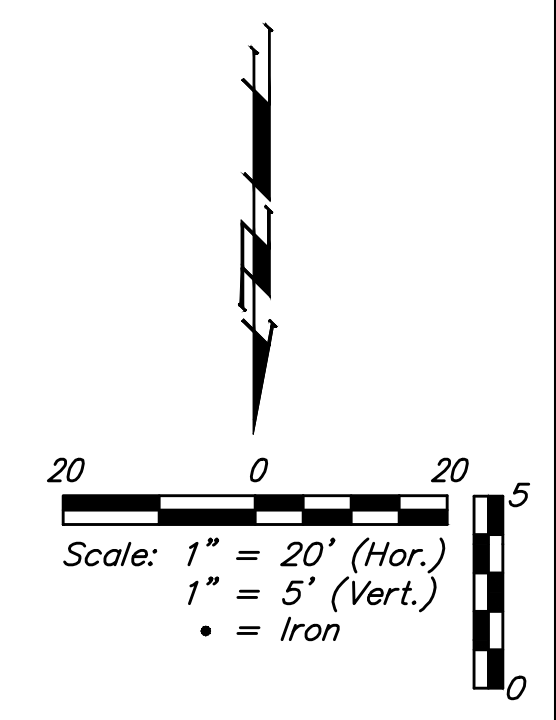


BENCHMARKS:
 BM #1: "□" Top of Curb NE of the most easterly corner of Lot 2B, Block E, Falcon Falls 2nd Addition
 Elev. = 1361.23 (NGVD29)
 BM #2: "□" Top of Curb North of the NE corner of Lot 2, Block D, Falcon Falls 3rd Addition
 Elev. = 1351.76 (NGVD29)



Sta. 0+00.00, Line 3
 Exist. Backyard Inlet
 Top Elev. = 1353.40

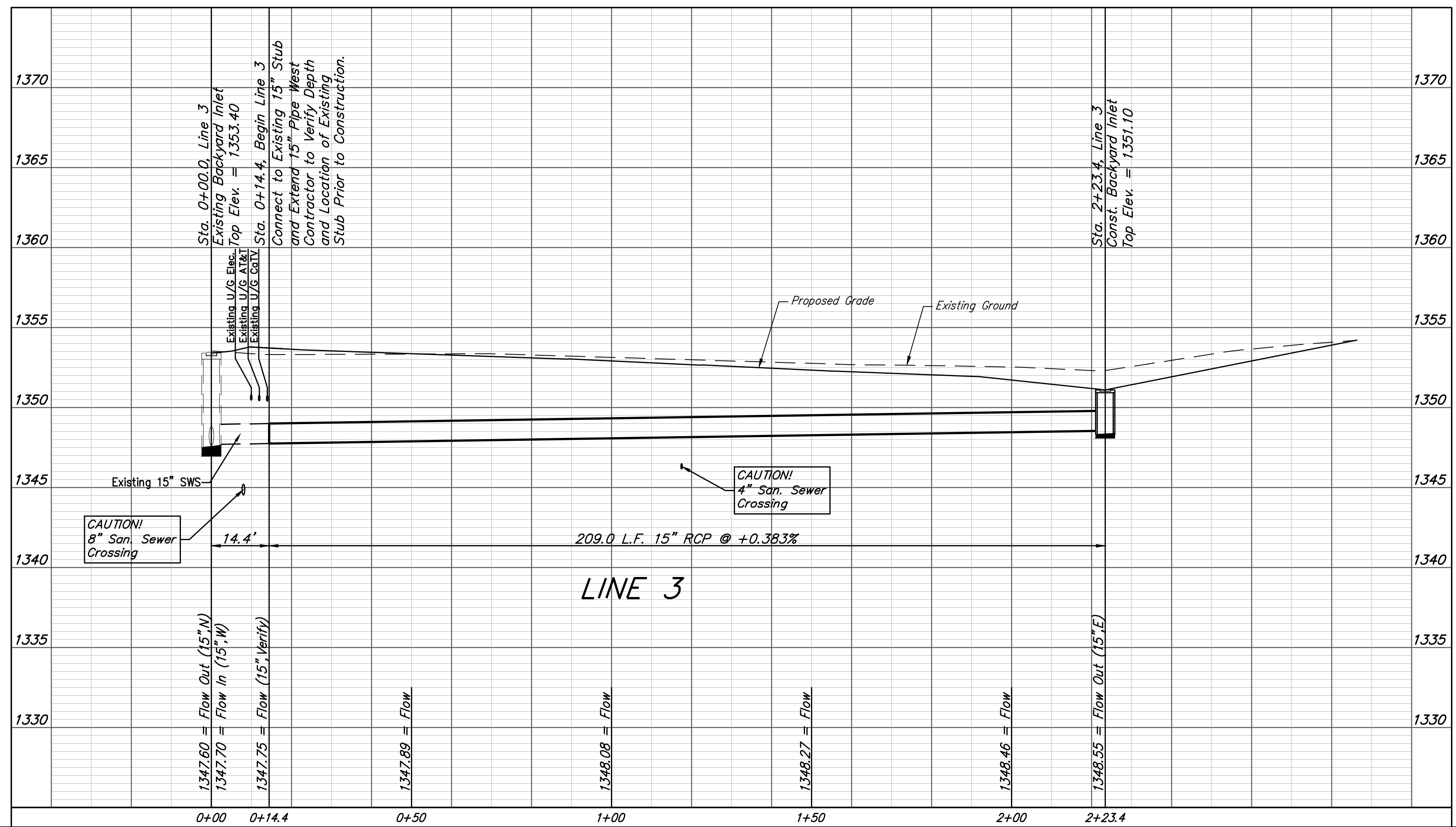
CAUTION!
 8" San. Sewer
 Crossing

Sta. 0+14.4, Begin Line 3
 Connect to Existing 15" Stub
 and Extend 15" Pipe West
 Contractor to Verify Depth
 and Location of Existing
 Stub Prior to Construction.

CAUTION!
 Existing Underground
 AT&T, Elec., & CaTV
 Crossing
 Existing AT&T Vault to be
 relocated by "Others" prior
 to construction.

Sta. 2+23.4, End Line 3
 Const. Backyard Inlet
 Top Elev. = 1351.10

Existing trees which are in direct conflict
 with proposed new construction shall be
 removed or chainsaw trimmed by the
 Contractor ONLY with Developer's approval.
 Trees not in direct conflict with proposed
 new construction shall remain and be
 protected from damage. Cost to be
 included in bid item, "Site Clearing".



		Falcon Falls 2nd Addition - Phase 4A	
		LINE 3	
Storm Water Sewer Improvements #731		<small>Baughman Company, P.A. 315 Ellis St. Wichita, KS 67211 P 316-262-7271 F 316-262-0149 ENGINEERING SURVEYING PLANNING LANDSCAPE ARCHITECTURE</small>	
PROJECT NUMBER 468-85340	DESIGN AEG	DRAWN JAK	DATE 9/04/18
REVISIONS:	SCALE Noted SHEET		
			9 OF 24