

# GENERAL NOTES:

1. The Contractor shall comply with all applicable safety regulations. All construction shall be completed following current City Standard Specifications and Special Provisions.

2. Contractor will be required to provide notice to utility companies a minimum of seventy-two (72) hours prior to any excavation, as follows:

Kansas One-Call 687-2470

The Contractor must notify the following in case of an emergency:

AT&T 1-800-246-8464  
 Black Hills Energy 1-800-694-8989  
 City of Wichita Water & Sewer 1-316-219-8921  
 City of Wichita Stormwater 1-316-268-4090  
 City of Wichita Traffic 1-316-268-4034  
 Cox Communications 1-888-249-3530  
 Kansas Gas Service 1-888-482-4950  
 Westar Energy 1-800-544-4857

3. Utility service lines, poles, etc. are to be adjusted as necessary by others prior to construction unless the plans specifically call for their adjustment by the Contractor or unless the plans specifically identify a utility to be adjusted by its owner during construction. Existing utilities and their location, as shown on the plans, represent the best information obtainable for design. The Contractor will be required to work around existing utilities within the right-of-way which do not conflict with proposed construction.

4. Rubble from the removal of miscellaneous structures and excess excavation which is to be wasted shall be disposed of on sites to be provided by the Contractor. These sites shall be approved by the Engineer as to suitability, appearance and site location. Locations, in the opinion of the Engineer, that will leave an unsightly appearance will not be approved. All disposal sites must be approved by the Kansas Department of Health and Environment. Material either stockpiled or disposed of in a flood plain will require a Kansas State Board of Agriculture permit. Any material dumped in waters of the United States or wetlands is subject to U.S. Corps. of Engineers permitting regulations. Any material buried or stockpiled beyond approved construction limits will require additional archaeological investigations unless buried in a previously approved borrow location.

5. Trees and shrubs in public right-of-way which are in direct conflict with proposed new construction shall be removed by the Contractor with the City Engineer's approval. Trees and shrubs which are not in direct conflict with proposed new construction shall be saved and protected from damage.

6. The Contractor shall give all property owners and/or tenants of developed property abutting the construction of this project a minimum of ten (10) days notice prior to start of construction.

7. The Contractor shall be responsible for preserving property irons. The Contractor will be required to re-establish any property irons which are damaged or destroyed by his construction operations. Such irons shall be re-established by a licensed land surveyor in accordance with state laws.

8. The Engineering Division shall field locate water valve one time during construction when requested by the Contractor. It shall be the Contractor's responsibility to preserve such field locations during the construction process. Water valves, valve boxes or fire hydrants damaged during construction shall be repaired by Contractor at his own expense. Valve boxes and water meters within the project limits shall be adjusted to match field grades by the contractor.

9. The Contractor shall notify the consultant engineer and Tom Mason at 316-268-4574 with the City of Wichita with the anticipated construction start date and notify them of project completion. Staking and inspection for this project will be the responsibility of the Contractor.

10. If traffic will be impacted by construction, a traffic control plan must be submitted and approved by the City Traffic Engineer, Brian Coon at [traffic@wichita.gov](mailto:traffic@wichita.gov) before construction can begin. The Contractor shall be responsible for all traffic control measures to facilitate construction. All construction zone markings and signage shall conform to the latest version of Manual on Uniform Traffic Control Devices (MUTCD) as published by the US Dept. of Transportation, Federal Highway Administration. All costs associated with construction markings and signage shall be the Contractors responsibility.

11. All elevations shown are NAVD 88.

12. All areas disturbed during construction that will not be under proposed pavement shall be restored to match existing conditions.

13. Any sidewalk, drive approach, or street pavement removed to construct project must have a pavement cut permit and be replaced by the City contractor. Permits can be obtained by calling 316-268-4501 or 316-268-4480.

14. City maintenance of storm sewer ends at last structure in the easement or right-of-way.

15. All existing and proposed erosion control measures including silt fencing, erosion control mat, straw bales, inlet barriers, and const. entrance shall be maintained throughout construction by the contractor and until project is accepted by the City of Wichita. The on-site engineer shall complete weekly reports on the status of erosion control measures. The contractor shall be required to comply with maintenance and/or replacement of erosion control measures as determined by the on-site engineer until project is accepted by City of Wichita. Maintenance and/or replacement of erosion control measures to be paid by L.S. bid item "Maintain Existing BMPs".

16. All areas disturbed during construction shall be seeded at 300 lbs./acre with Rye Grass immediately following construction in that area. Contractor shall prepare ground per City Specifications.

17. The Contractor shall not begin work on the project until the Project Inspector is assigned and on site. Any work completed without inspection will be required to be uncovered for inspection at the Contractor's expense.

## Benchmarks

BM #1: Chiseled Square with divot on the top of curb at the east curb return at the NE corner of St. Francis and 2nd Street.  
 Elev. = 1298.73 (NAVD88)

## AS BUILTS

Contractor:

WILKS  
 UNDERGROUND  
 UTILITIES

Project Inspector:

LARRY GANN

**KEMILLER**  
 ENGINEERING PA

117 E. Lewis, Wichita, KS 67202 (316)264-0242

# STORM SEWER IMPROVEMENTS

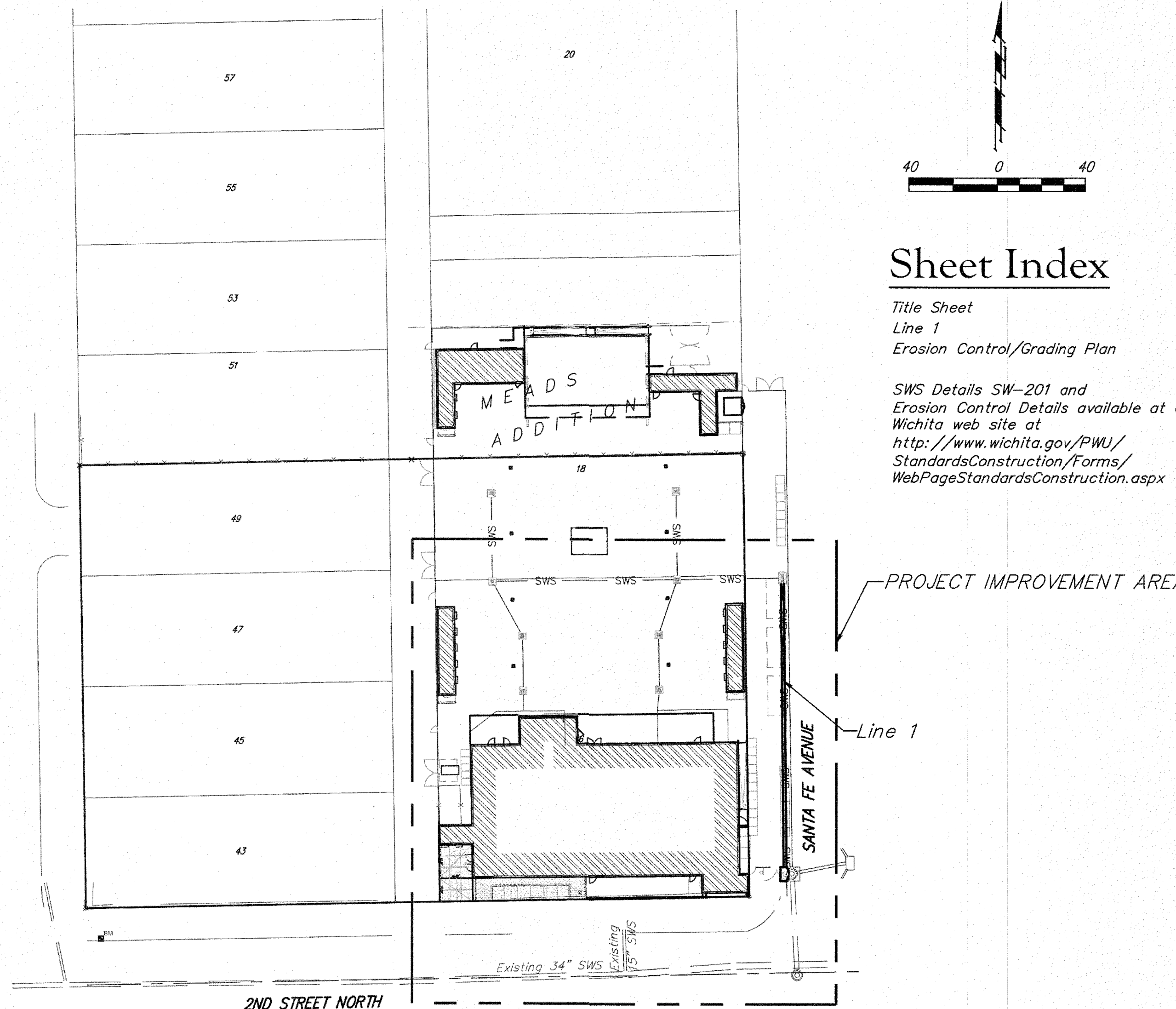
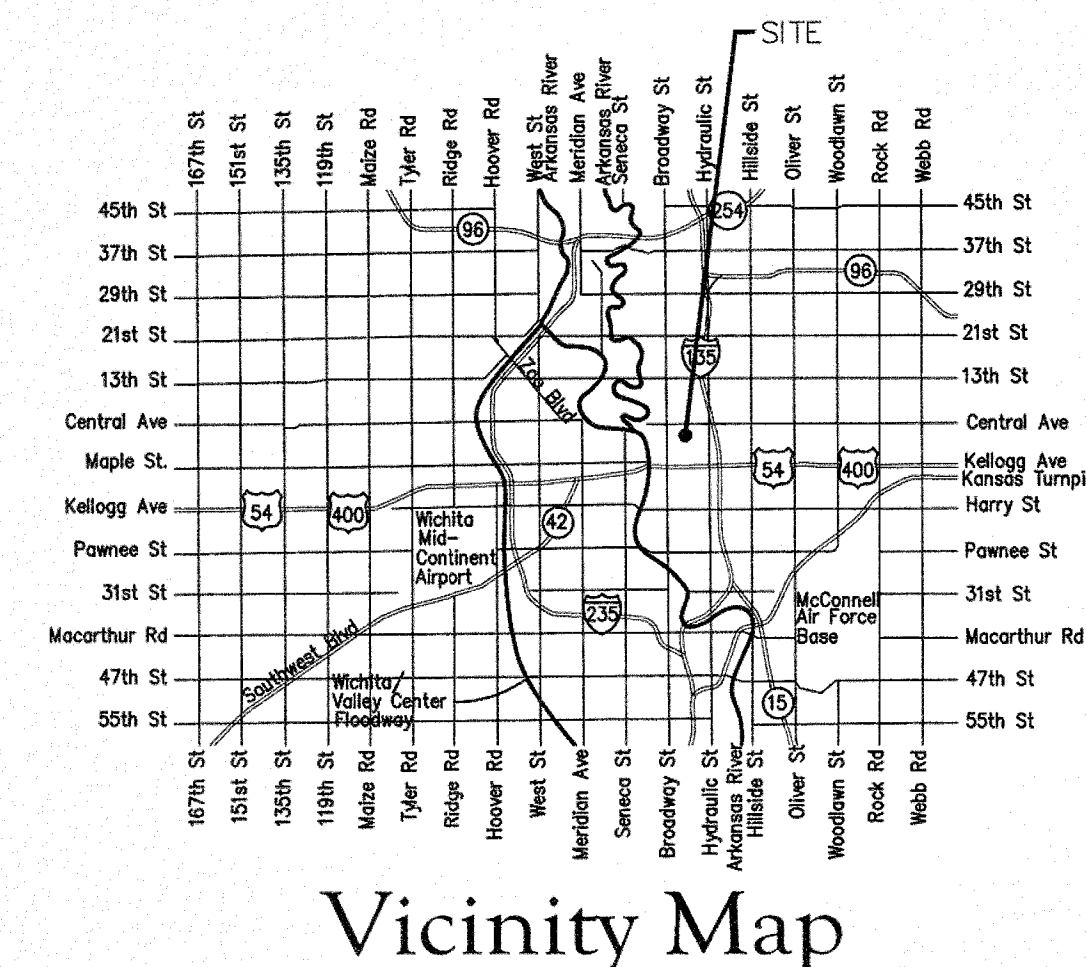
to serve

# THE WAVE MEADS ADDITION

656 E. 2ND STREET  
 CITY OF WICHITA, KANSAS

Gary Janzen, P.E. City Engineer

Project Number  
 0524 PPD (133119)



## Sheet Index

Title Sheet	1
Line 1	2
Erosion Control/Grading Plan	3

SWS Details SW-201 and Erosion Control Details available at City of Wichita web site at <http://www.wichita.gov/PWU/StandardsConstruction/Forms/WebPageStandardsConstruction.aspx>

**Stormwater Certification:**  
 New Development

These construction plans were prepared in accordance with the current Stormwater Management Regulations as set forth in the City of Wichita's Stormwater Management Ordinance 16.32 and the policies/guidelines presented in the Wichita/Sedgwick County Stormwater Manual.

Disturbed Area = 0.8 ac.  
 Water Quality Treatment: N/A  
 Downstream Channel Protection: N/A  
 Detention: N/A

The BMP used for this development is silt fence, drop inlet protection, curb inlet protection, and construction entrance.

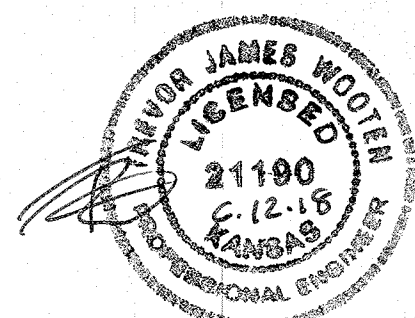
APPROVED AS NOTED  
 BY WICHITA PUBLIC WORKS ENGINEERING  
 AND STORMWATER DIVISION

Engineering *Julianne Kellerman* 6-14-18  
 Stormwater *Joe Finkle PE* 6/15/18

NOTE TO CONTRACTORS

Inspection and testing for this project is to be provided by a Licensed Consulting Engineering Firm under contract with the Owner/Developer. Said inspection to be in accordance with the City of Wichita standard construction engineering practices and certified by a Licensed Professional Engineer in the state of Kansas. No work shall be performed by the Contractor without such inspection nor shall any work be commenced without written authorization by City Engineering. All Construction and Materials shall conform with the current City of Wichita Specifications and Standards and Special Provisions (on file and available at Wichita.gov).

An approved copy of these plans signed by City staff are required on-site.

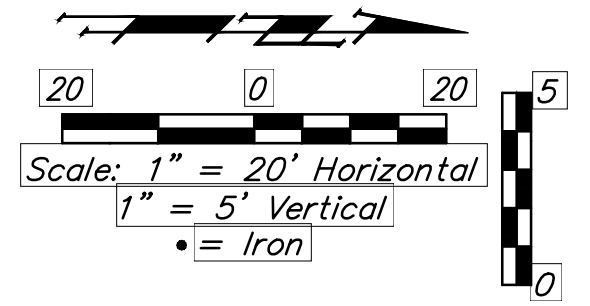


**BENCHMARK:**  
 BM #1: Chiseled Square with  
 divot on the top of curb at  
 the NE corner of St. Francis and  
 2nd Street.  
 Elev. = 1298.73 (NAVD88)

**AS BUILTS**



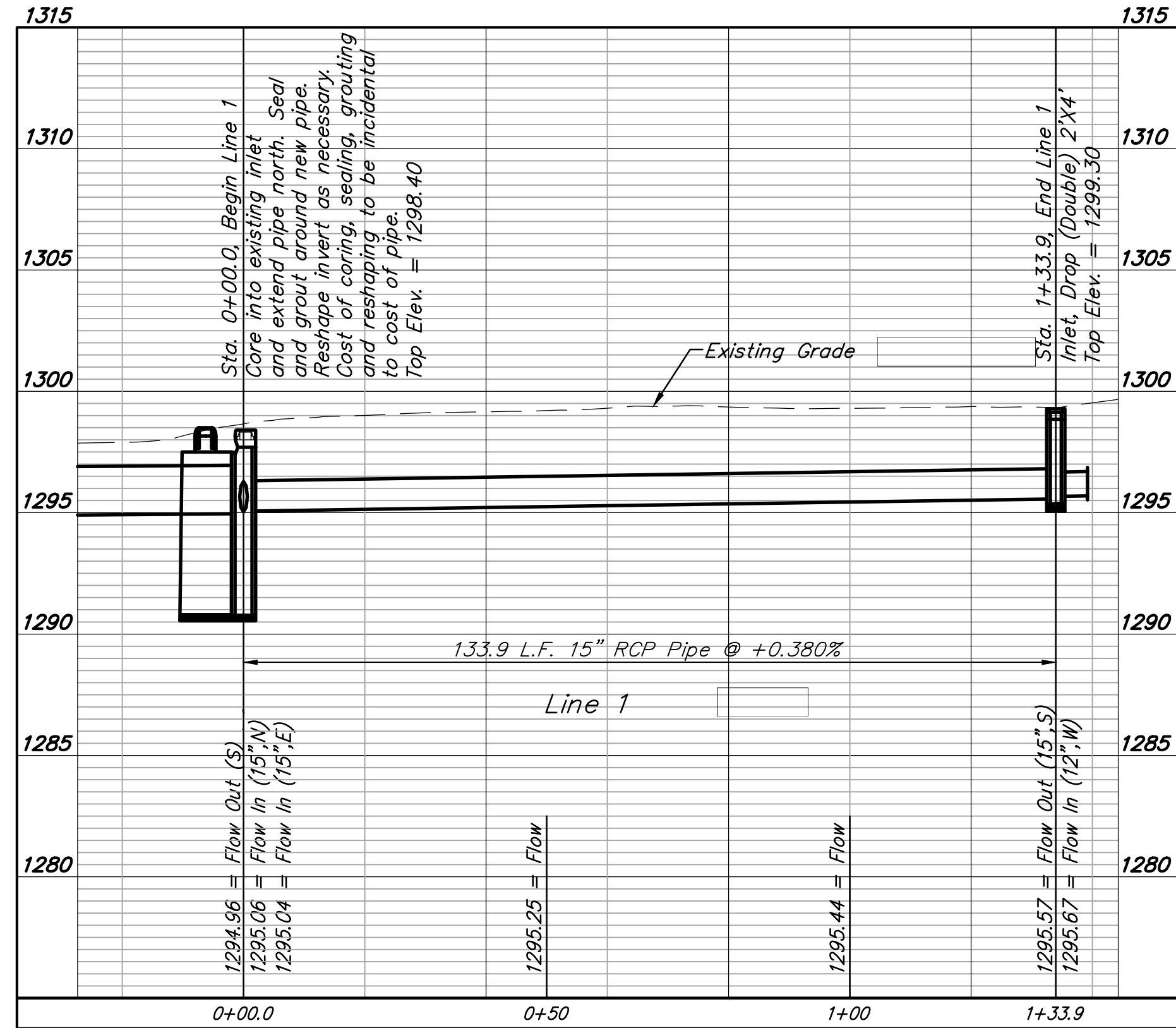
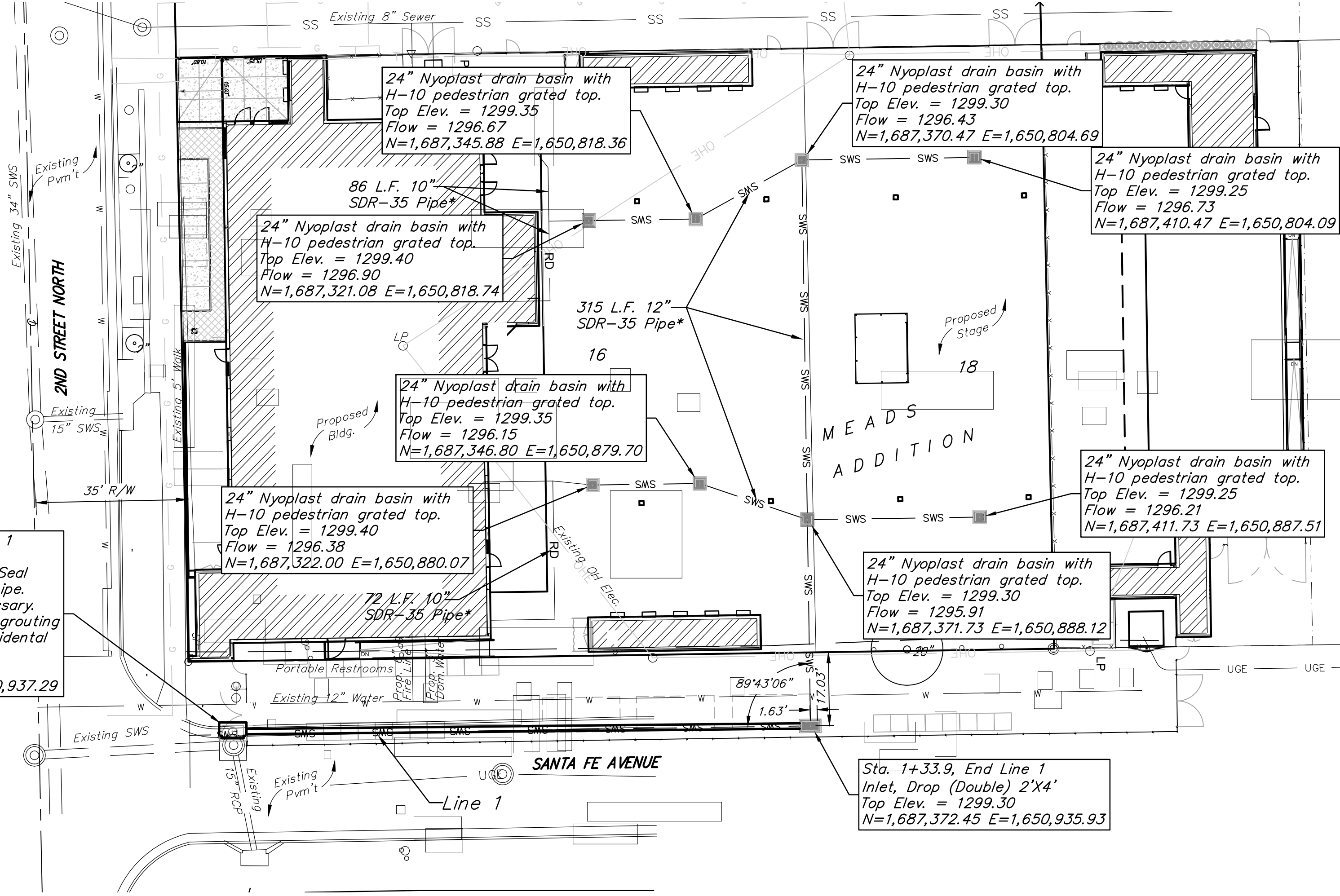
**KEMILLER**  
 ENGINEERING PA  
 117 E. Lewis,  
 Wichita, KS 67202 (316)264-0242



\*10" & 12" pipe to be reviewed, approved, and inspected by MABCD. Only structures on the 12" line are included for inspection with this PPD.

Sta. 0+00.0, Begin Line 1  
 Core into existing inlet and extend pipe north. Seal and grout around new pipe. Reshape invert as necessary. Cost of coring, sealing, grouting and reshaping to be incidental to cost of pipe.  
 Top Elev. = 1298.40  
 N=1,687,238.52 E=1,650,937.29

Contractor shall verify depth and location of existing inlet prior to construction and notify Engineer of any discrepancy.



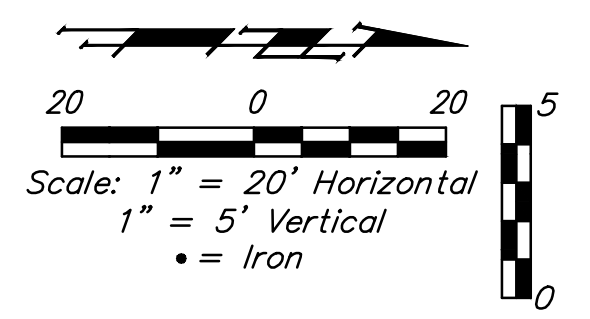
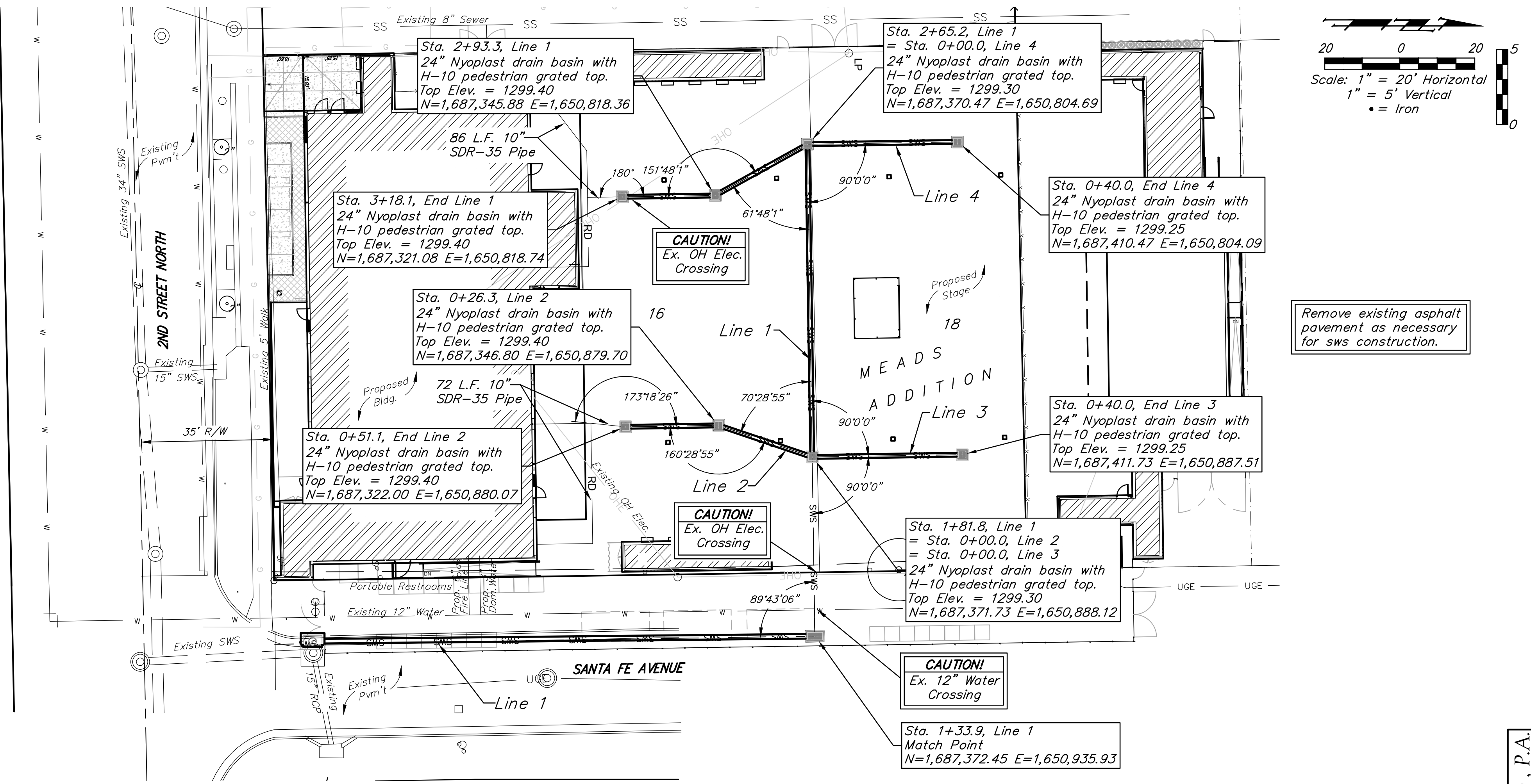
BENCHMARK:  
 BM #1: Chiseled Square with  
 divot on the top of curb at  
 the east curb return at the  
 NE corner of St. Francis and  
 2nd Street.  
 Elev. = 1298.73 (NAVD88)

**AS BUILTS**

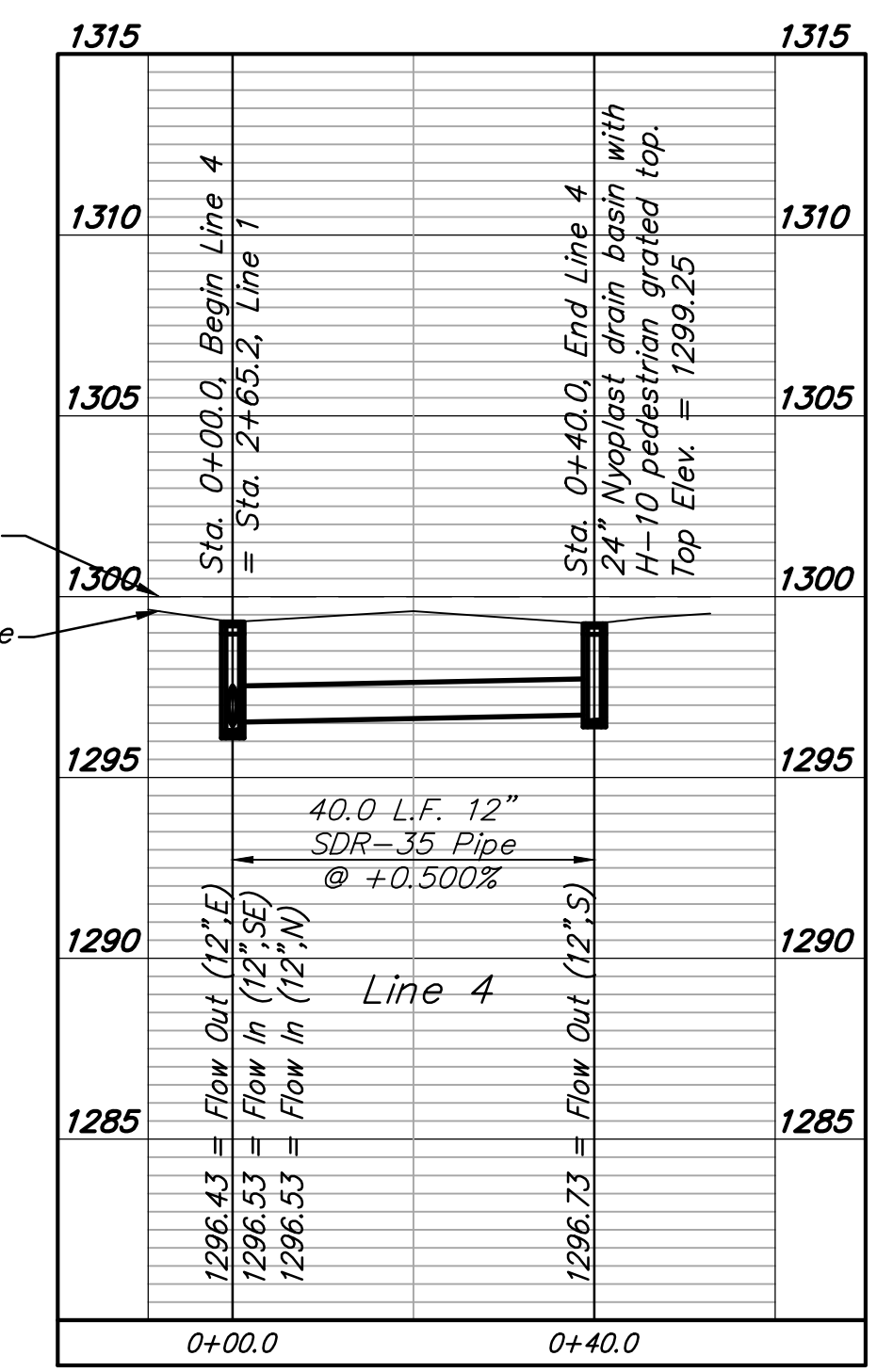
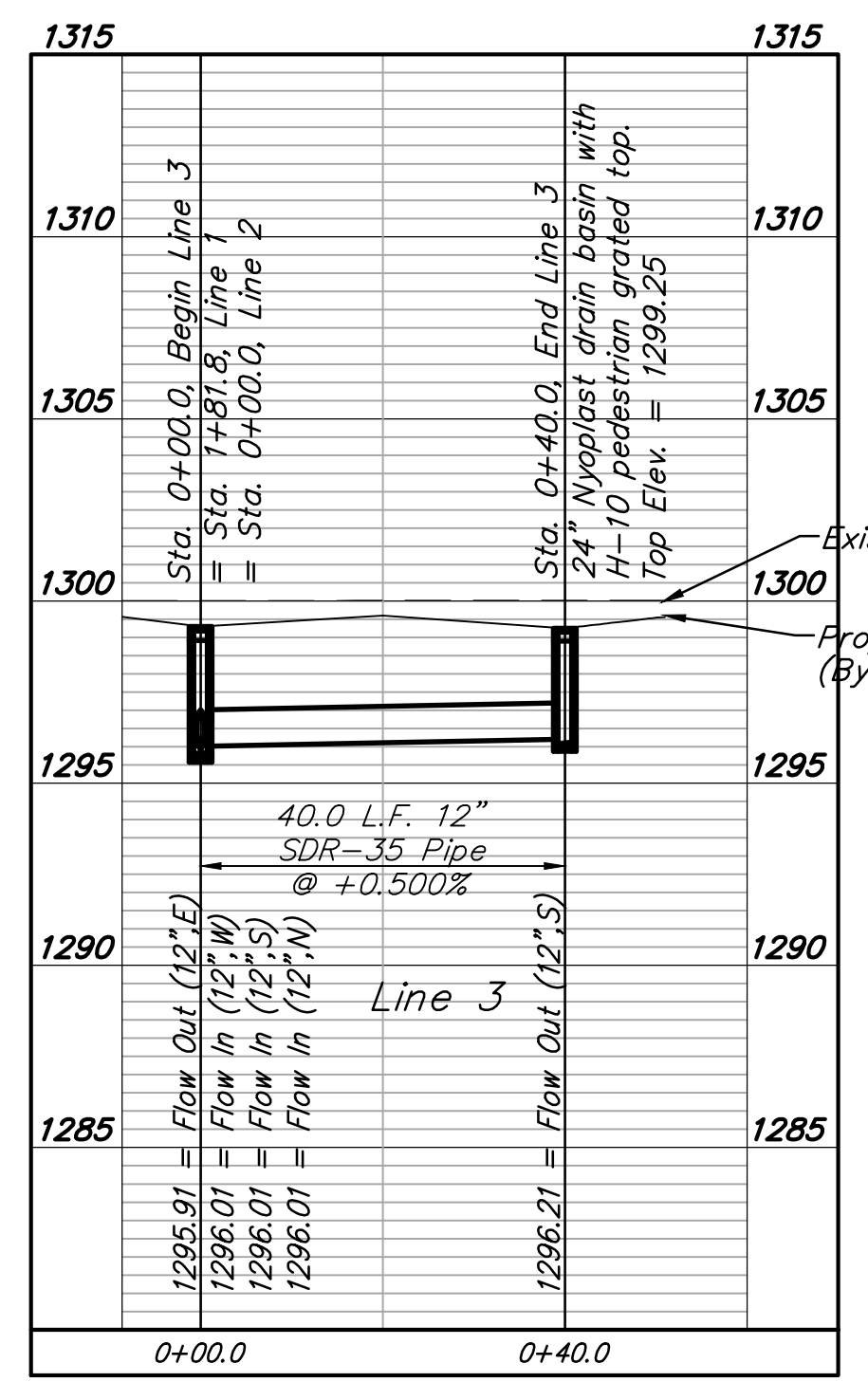
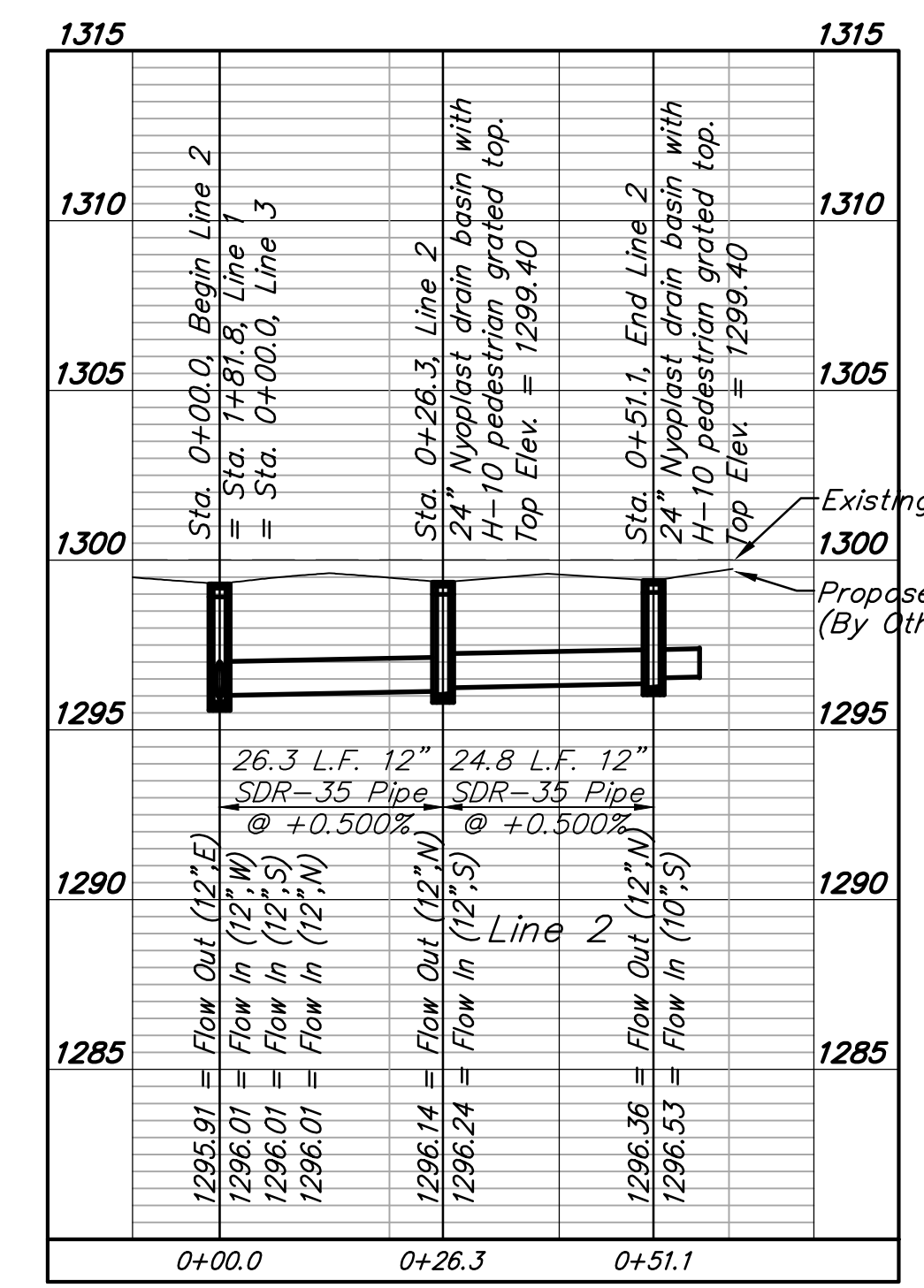
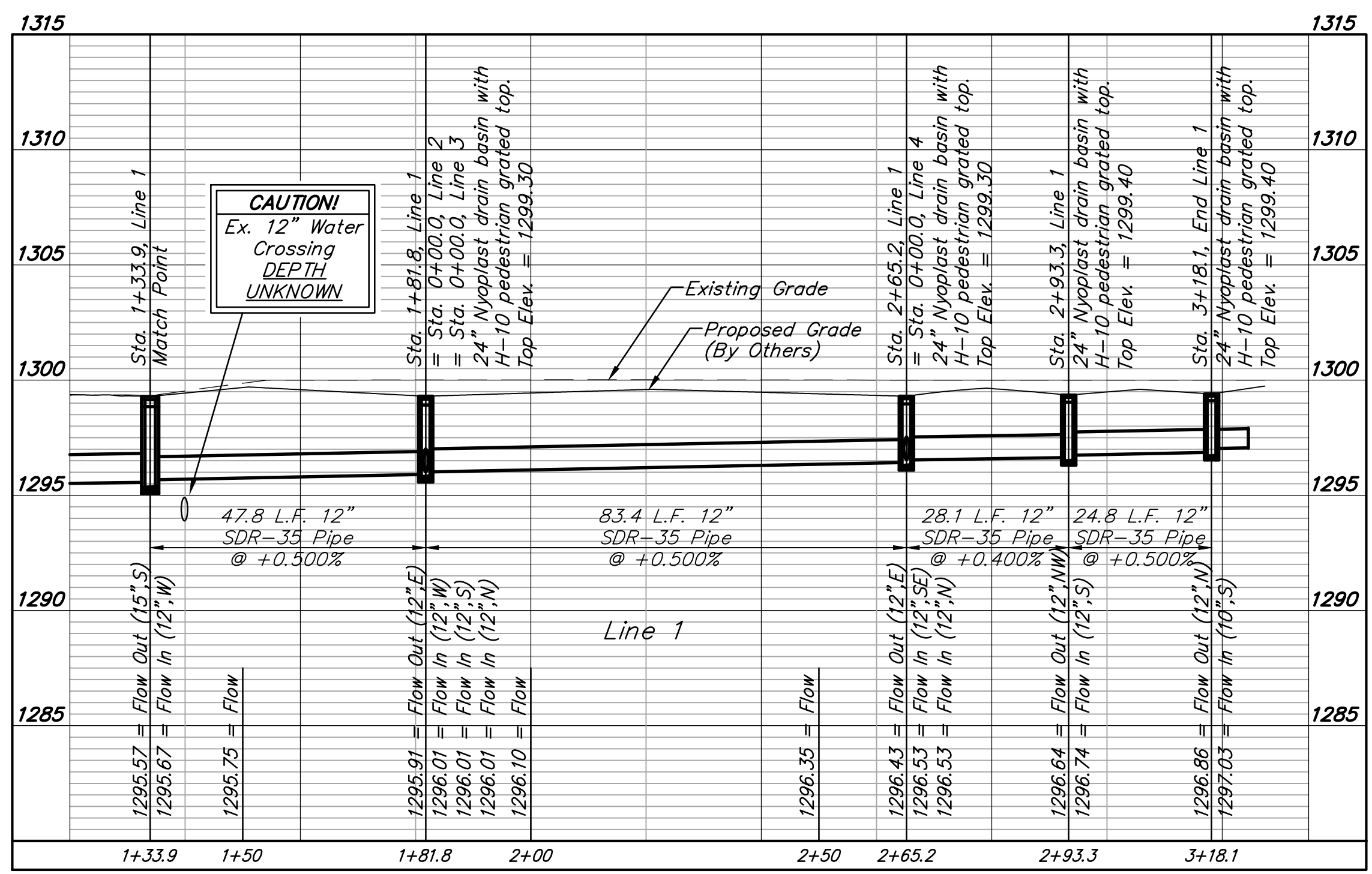
**KEMILLER**  
 ENGINEERING PA

117 E. Lewis,  
 Wichita, KS 67202 (316)264-0242

\*10" pipe to be reviewed,  
 approved, and inspected  
 by MABCD.



Remove existing asphalt  
 pavement as necessary  
 for sws construction.



### LEGAL DESCRIPTION

All of Large Lot or Block 16, and Large Lot or Block 18, except the north thereof, on Fifth now Santa Fe Avenue, in J.R. Mead's Addition to the Town of Wichita, Sedgwick County, Kansas, together with the West Half of the alley adjoining on the West.

### SITE INFORMATION

Total Area: 30,141.1 sq. ft. (0.69 acres)  
Disturbed Area: 30,141.1 sq. ft. (0.69 acres)  
Impervious Area, pre-const: 30,141.1 sq. ft. (0.69 acres)  
Impervious Area, post-const: 30,141.1 sq. ft. (0.69 acres)

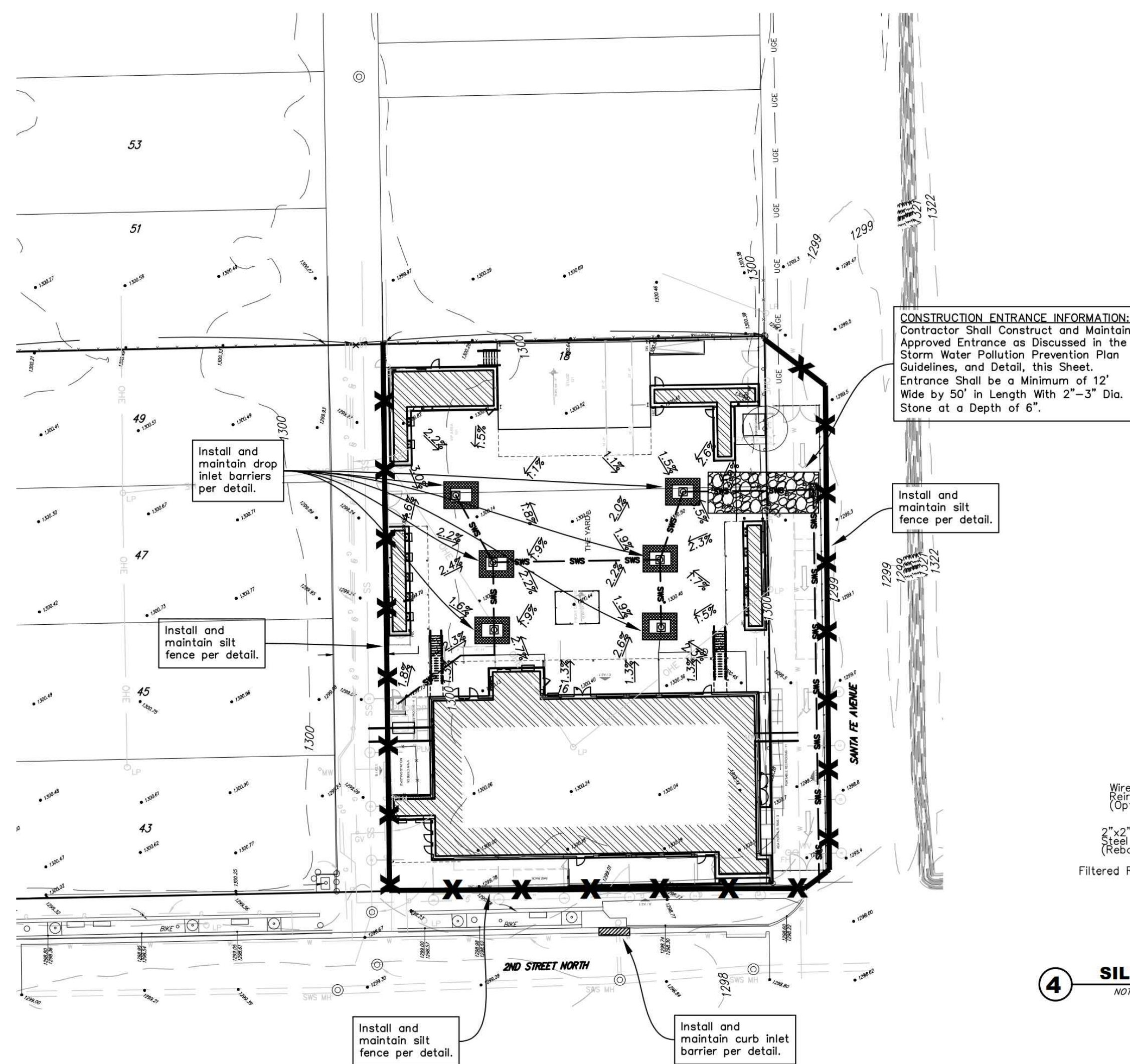
E:\Projects\The Wave - 2nd Street Music Venue 18-02-E835\Eng

### BENCHMARKS

CHISELED SQUARE WITH DIVOT ON THE TOP OF CURB AT THE EAST CURB RETURN AT THE NORTHEAST CORNER OF ST. FRANCIS AND 2ND STREET  
ELEVATION = 1298.73 (NAVD88)

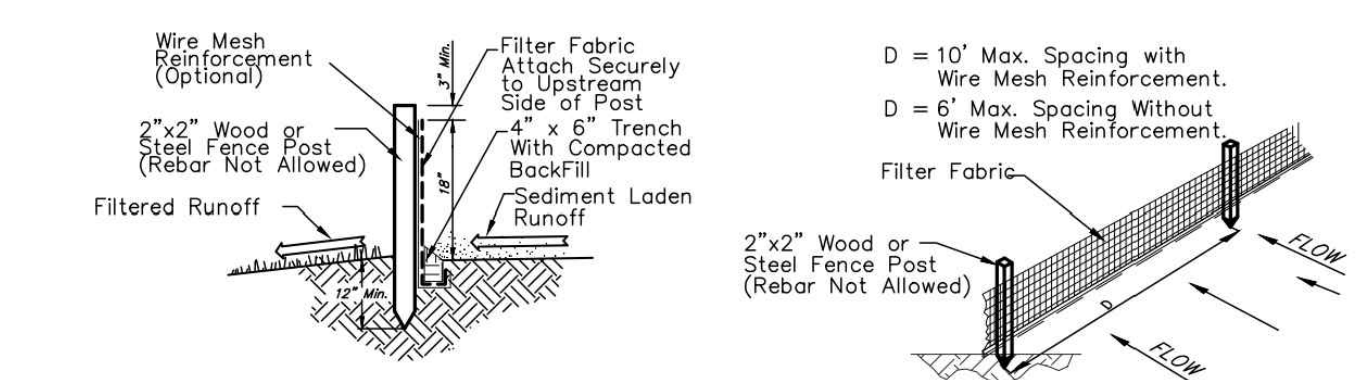
### EROSION CONTROL NOTES

- No land clearing or grading shall begin until all applicable erosion control measures have been installed. This project is subject to this SWPP Plan. The Contractor shall comply with any unusual requirements as necessary for the site to be in compliance during construction, per this plan and City specs (See #11).
- All exposed areas shall be seeded as specified within 21 days of final GRADING. Seed is to include straw mulch, crimped in place per industry standards.
- Should construction stop for longer than 14 days, the site shall be seeded as specified.
- Maintain erosion control measures after each rain and at least once a week.
- This plan shall not be considered all inclusive as the contractor shall take all necessary precautions to prevent soil sediment from leaving the site.
- Contractor shall comply with all state and local ordinances that apply.
- Additional erosion and sediment control measures will be installed if deemed necessary by on site inspection.
- Land disturbing activities shall not commence until approval to do so has been received by governing authorities.
- If installation of storm drainage system should be interrupted by weather or nightfall, the pipe ends shall be covered with filter fabric.
- See Landscape Plan for ground treatments in all disturbed areas beyond impervious surfaces.
- This SWPP Plan should be in job trailer and/or on site at all times. The Contractor is responsible for any needed changes, updates or maintenance to BMP's on site. This plan may change and updates need to be recorded and documented on the plan. This plan is a flexible plan, due to changing site conditions and weather. Please inform Landscape Architect and/or Engineer of changes to plan.
- ANY substitutions for the sediment control devices shown, must be approved by the Landscape Architect and/or Engineer prior to any uses on site.
- An NPDES Permit Application has been submitted for this property. A copy of this application must be kept at the job site for the duration of the construction process.

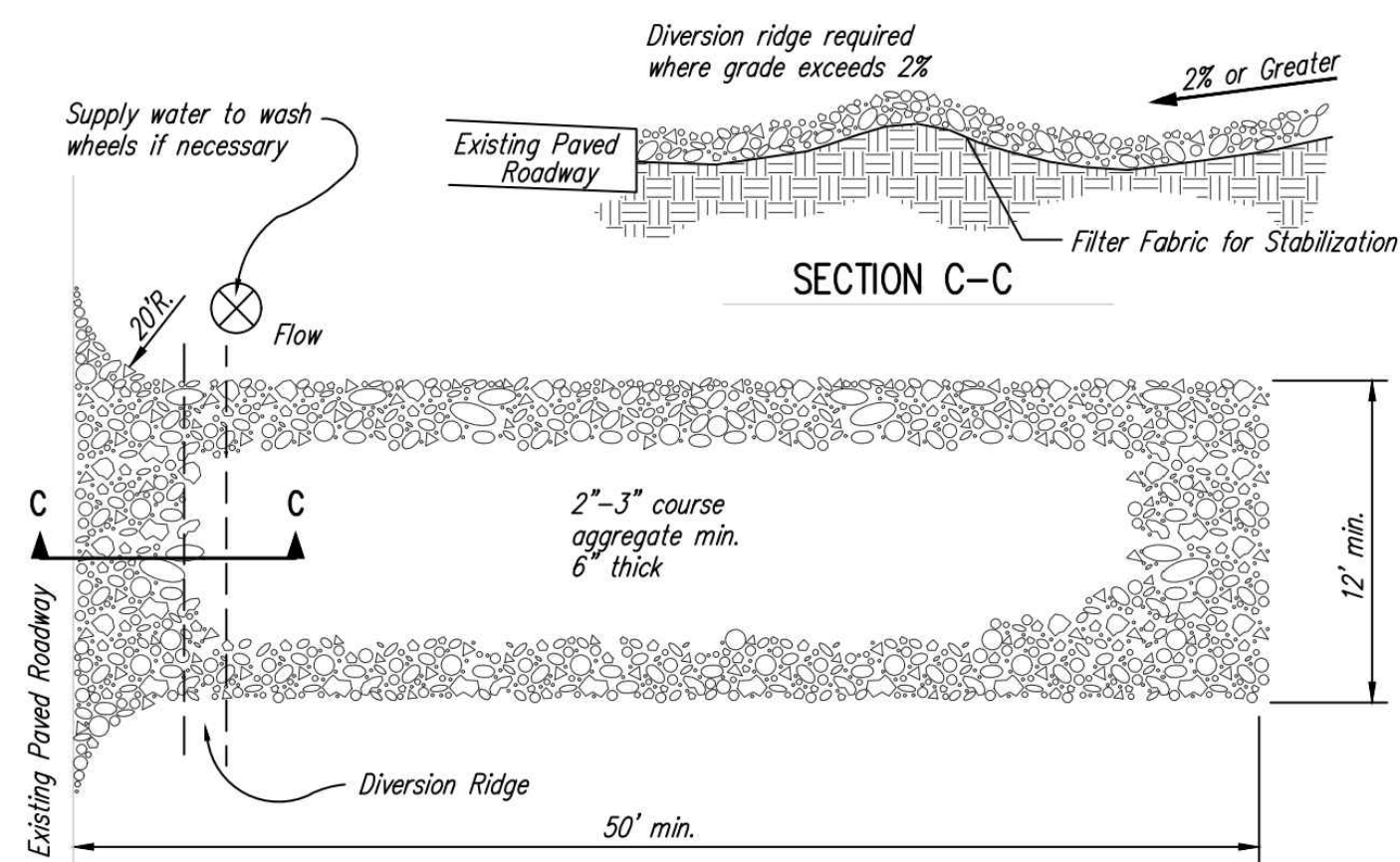


**FOR REFERENCE ONLY  
NOT TO SCALE**

**CONSTRUCTION ENTRANCE INFORMATION:**  
Contractor Shall Construct and Maintain Approved Entrance as Discussed in the Storm Water Pollution Prevention Plan Guidelines, and Detail, this Sheet. Entrance Shall be a Minimum of 12' Wide by 50' in Length With 2"-3" Dia. Stone at a Depth of 6".



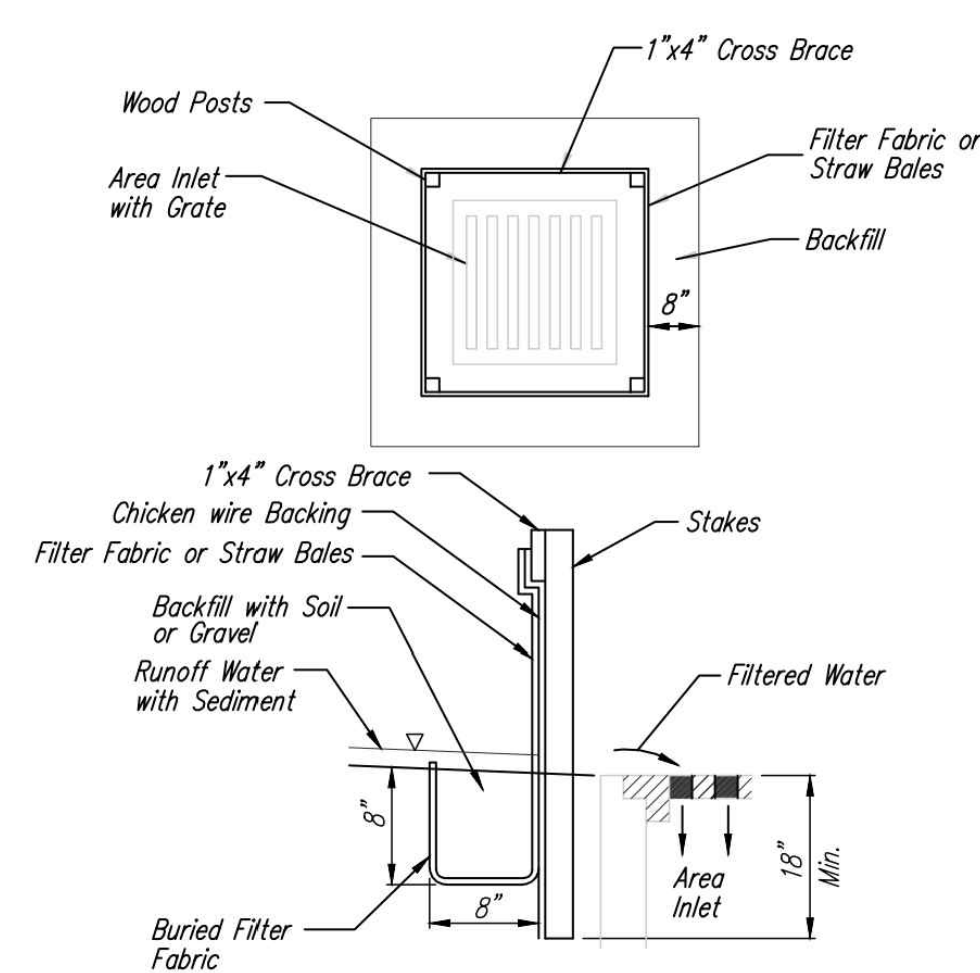
**4 SILT FENCE DETAIL**  
NOT TO SCALE



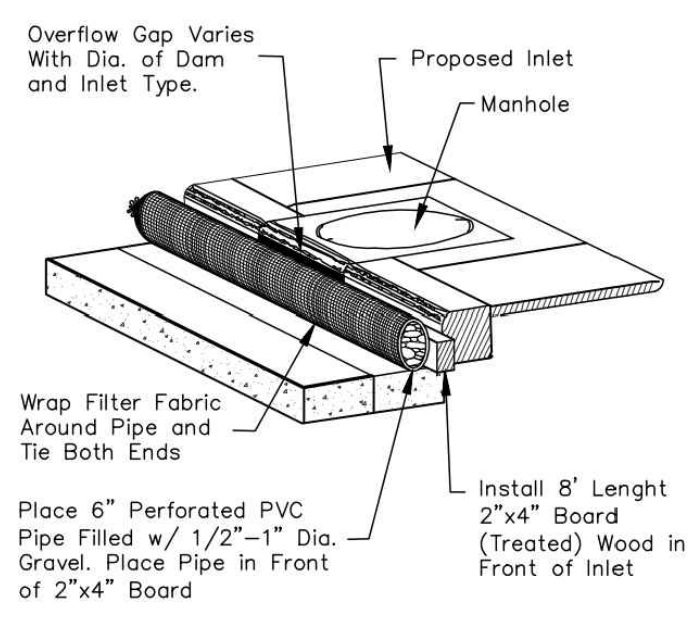
- NOTES:
- THE ENTRANCE SHALL BE MAINTAINED IN A CONDITION THAT WILL PREVENT TRACKING OR FLOWING OF SEDIMENT ONTO PUBLIC RIGHTS-OF-WAY. THIS MAY REQUIRE TOP DRESSING, REPAIR AND/OR CLEANOUT OF ANY MEASURES USED TO TRAP SEDIMENT.
  - WHEN NECESSARY, WHEELS SHALL BE CLEANED PRIOR TO ENTRANCE ONTO PUBLIC RIGHT-OF-WAY.
  - WHEN WASHING IS REQUIRED, IT SHALL BE DONE ON AN AREA STABILIZED WITH CRUSHED STONE THAT DRAINS INTO AN APPROVED SEDIMENT TRAP OR SEDIMENT BASIN, AS SHOWN ABOVE.
  - DRIVE ENTRANCES ONTO RESIDENTIAL LOTS WILL NOT BE REQUIRED TO HAVE THE SEDIMENT BARRIER SHOWN, BUT WHEEL WASHING MAY BE REQUIRED IF STABILIZED ENTRANCE IS NOT SUFFICIENT TO KEEP MUD FROM BEING TRACKED ONTO ADJACENT STREET. ENTRANCE SHALL EXTEND FROM BACK OF CURB TO DWELLING.

**3 STABILIZED CONSTRUCTION ENTRANCE**  
NOT TO SCALE

**EROSION CONTROL PLAN**  
Scale 1"=20'0"

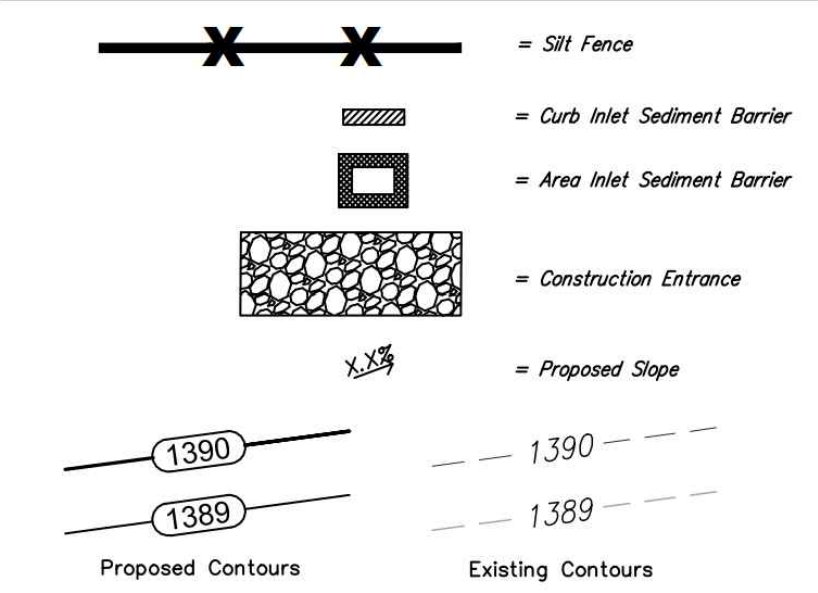


**1 INLET PROTECTION FOR AREA INLETS**  
(INLET PROTECTION: SILT FENCE OR STRAW BALES)



**2 TYPE 1 INLET PROTECTION**  
NOT TO SCALE

### EROSION CONTROL LEGEND



**BAUGHMAN COMPANY**  
315 Ellis St., Wichita, KS 67211 316-262-7271  
BaughmanCo.com

**OLD TOWN VENUE, LLC**  
2ND ST. & SANTA FE ST.  
WICHITA, KS.

PROJECT NO.	17-0058
ISSUE:	DATE:
PERMIT & PRICING	16 MAR 18

**EROSION CONTROL PLAN**  
**C2.0**