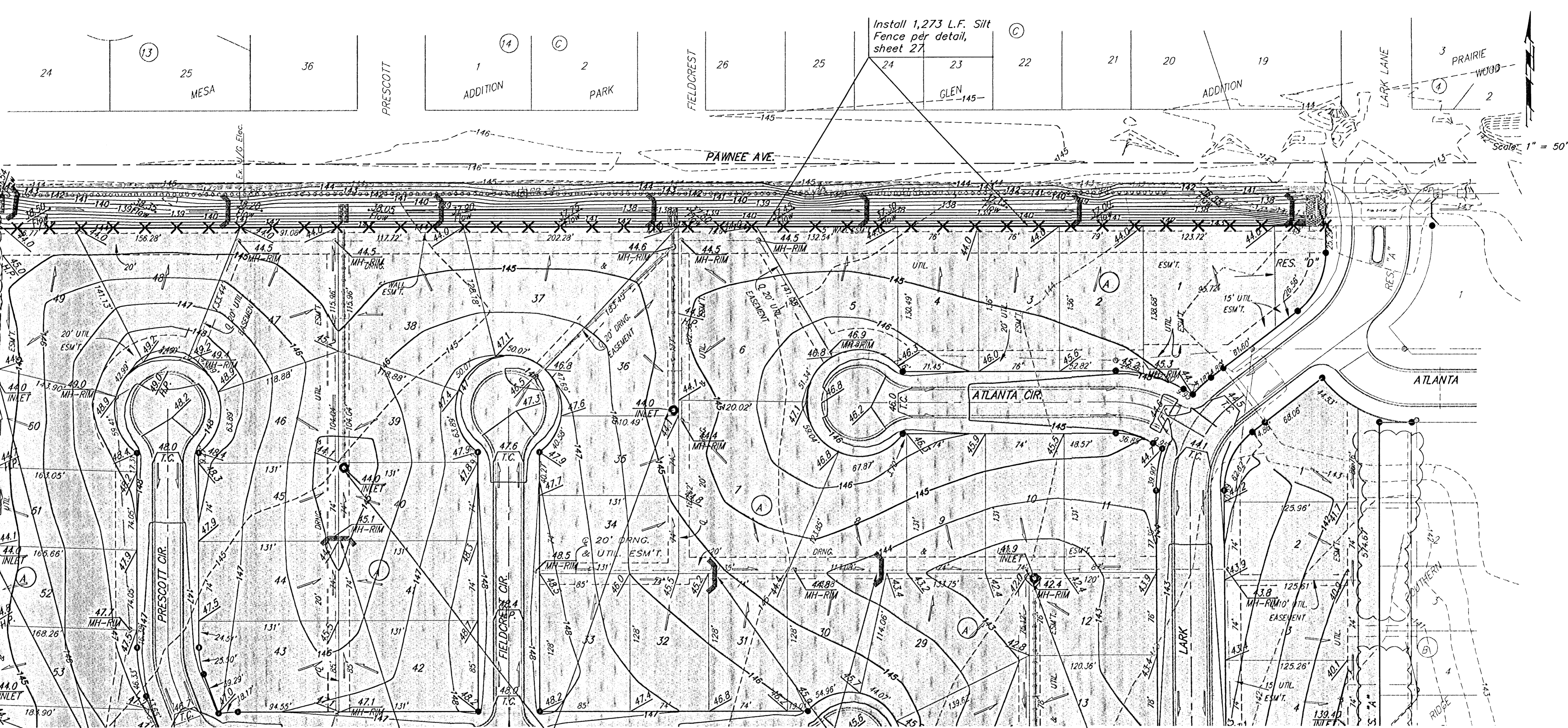


BENCHMARKS:
 BM #1: COW Disc at South West Corner of the Intersection of Lark & Atlanta.
 Elev. = 145.20 (City Datum)

BM #2: COW Disc at North West side of Westgate at South End of Lot 13 Block "B" Southern Ridge Addition.
 Elev. = 144.10 (City Datum)

BM #3: COW BM at Shefford on the south side of Pawnee Ave.
 Elev. = 145.53 (City Datum)



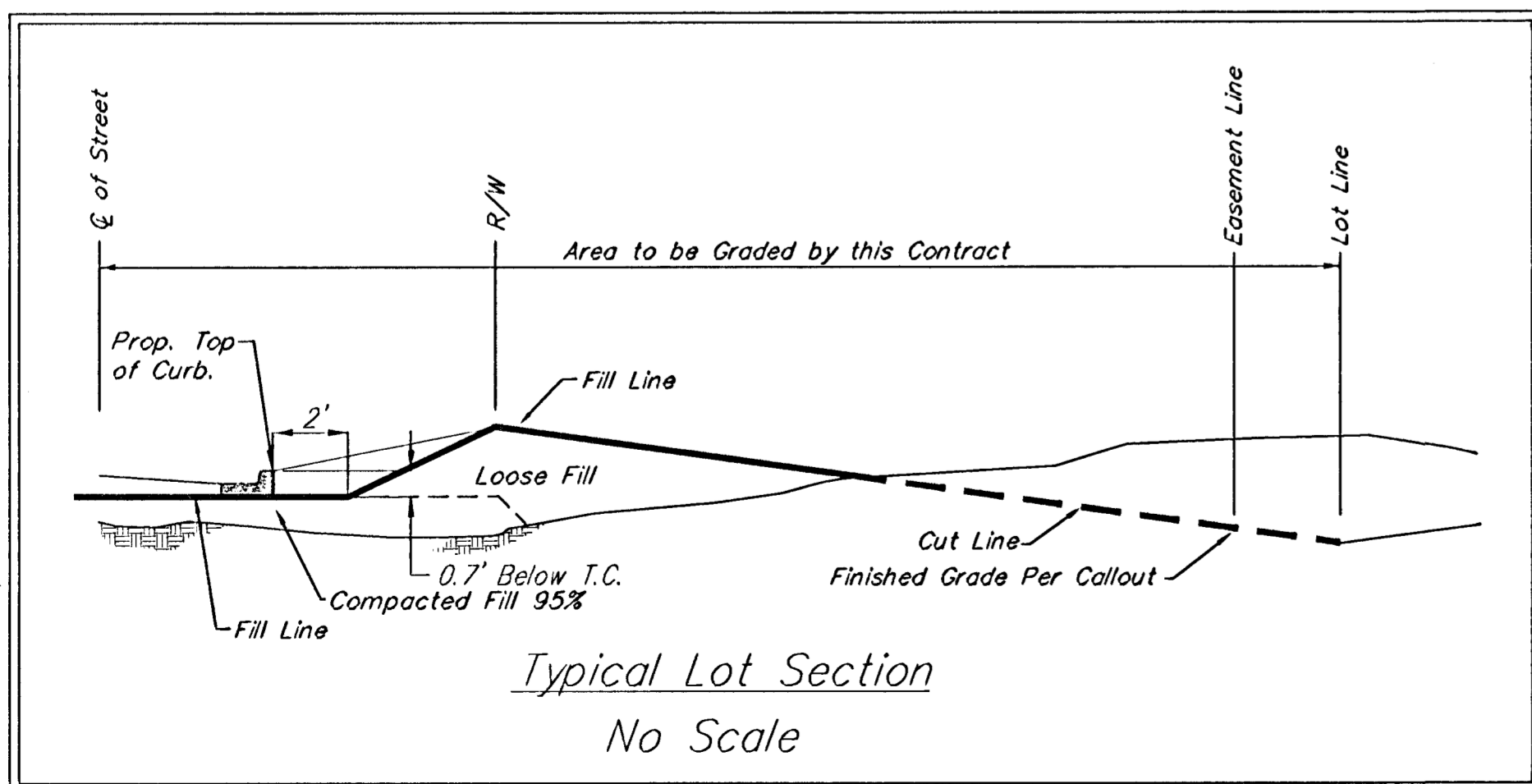
Install Drop Inlet Protection

Construct hay bale barrier per detail, sheet 27.

Install Drop Inlet Protection

Construct hay bale barrier per detail, sheet 27.

Install Drop Inlet Protection



EARTH WORK TOTALS

	C.Y. Excavation	C.Y. Fill
Mass Grading	20,209	40,331

Earthwork quantities include ditch excavation and are for reference only. Quantities do not include correction factors. All cost associated with mass grading and ditch grading shall be incidental to lump sum bid item "Mass Grading".

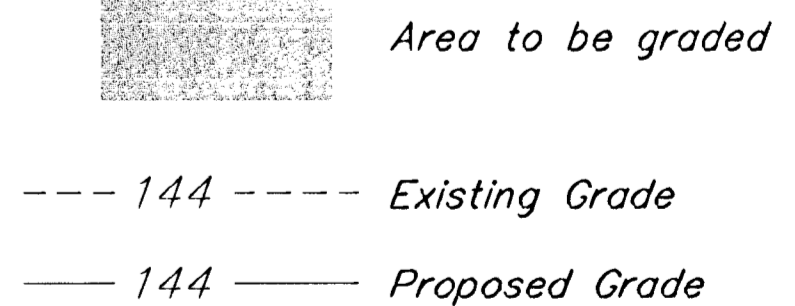
- Contractor to strip top 3" of soil within street R/W's before mass grading.
- Compaction of 95% shall be obtained in all street R/W's, 90% in all other areas.
- It shall be the Contractor's responsibility to protect the sanitary sewer and water distribution system during mass grading. Any damage done to these systems by Contractor or subcontractor shall be repaired at no additional cost to the project.

EROSION CONTROL PLAN LEGEND
(Installation Details Found in the SMP2 Plan)

- STONE RIP-RAP
 - DROP INLET PROTECTION
 - CURB INLET PROTECTION
 - STRAW BALE BARRIERS
 - SILT FENCING
 - EARTH DIKES
- NO SCALE

EROSION CONTROL MEASURE	UNITS	QUANTITY
SILT FENCE	L.F.	1,273
RIPRAP	S.Y.	PLAN
DROP INLET BARRIER	EA.	21
CURB INLET BARRIER	EA.	0
STRAW BALE DITCH CHECK	EA.	14
EARTHEN DIKES	L.F.	0
CURLEX	S.Y.	5,645
POND E.C. BLANKET	S.Y.	0
Construction Entrance	EA.	1

QUANTITIES ARE FOR INFORMATION ONLY!
 CONTRACTOR SHALL VERIFY QUANTITIES PER SPECIFIC ENGINEERING PLAN SHEET.



Southern Ridge 2nd Addition

MASS GRADING PLAN
WICHITA, KANSAS

SouthernRidge2nd/Mass 04-08-E045