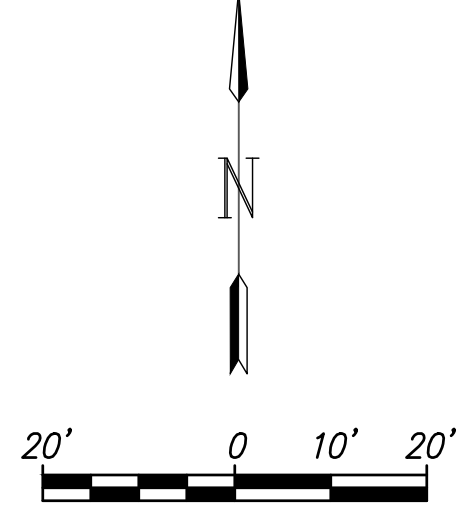
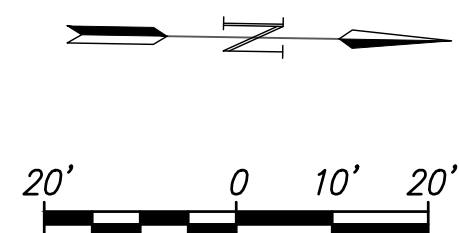
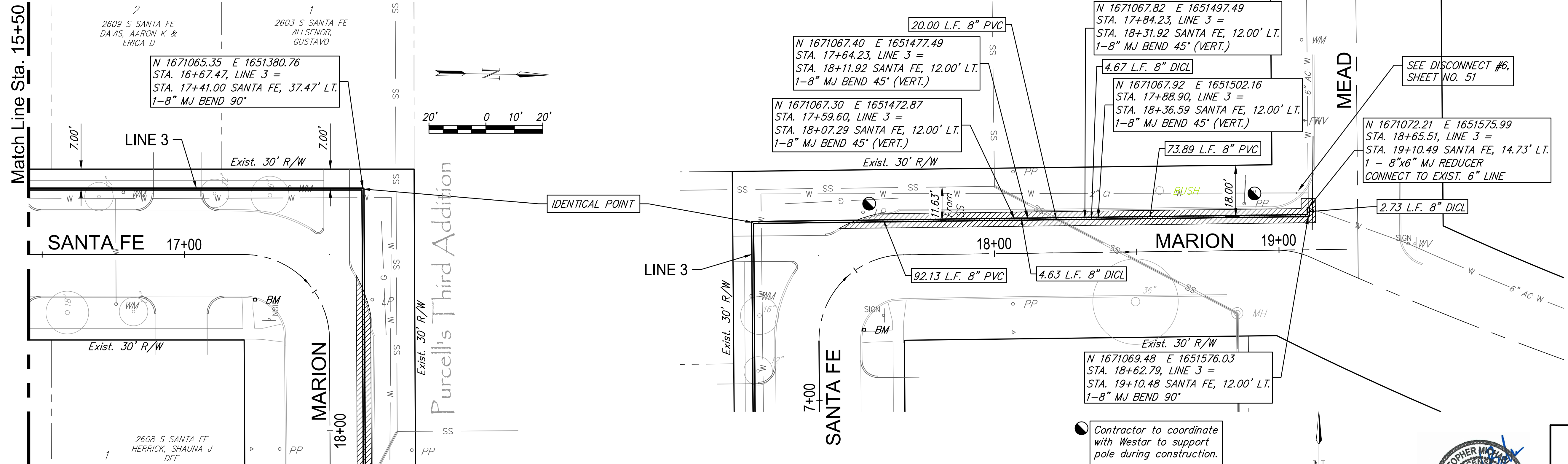


Purcell's Fourth Addition

Purcell's Third Addition

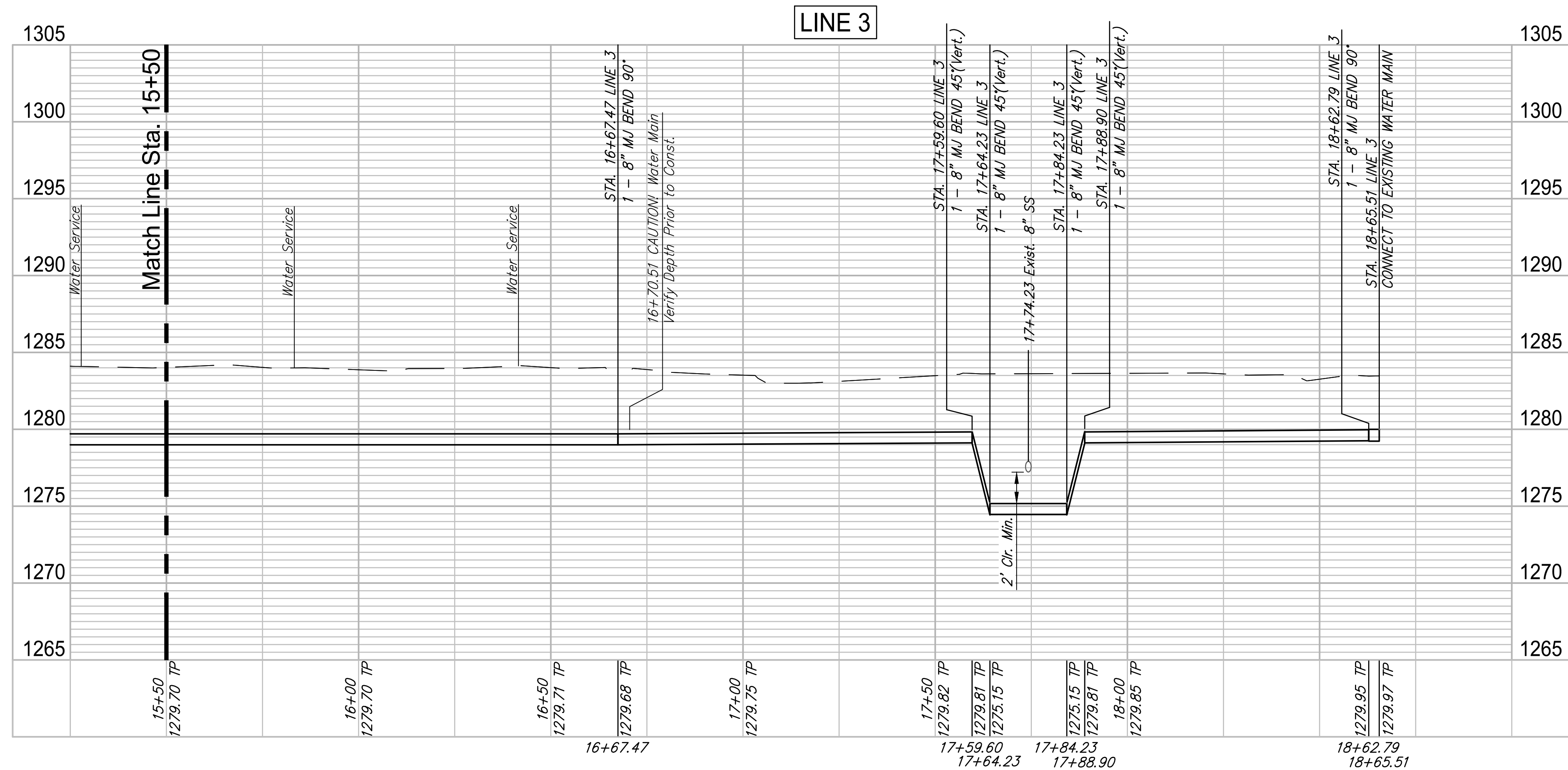


WATER METER SUMMARY

BL Station	Lt./Rt.	Service (Long or Short)	Address	As Built
16+76	Rt.	Long	2608 S. SANTA FE	
16+79	Lt.	Short	2609 S. SANTA FE	
17+30	Lt.	Short	2603 S. SANTA FE	

Contractor to coordinate with Westar to support pole during construction.

Existing Pavement, Curb and Gutter to be Removed and Replaced as necessary for construction. No additional pay shall be made for this work, Subsidiary to other pay items.



ROSE MARIE WATER - Part A
SANTA FE - LINE 3 (4 of 4)
Wichita, Kansas

PROJECT NUMBER 448-90721	DESIGN CMB / RA	REVIEW 12-7-16
DRAWING FILE LINE 3 - Santa Fe 2-2	DRAWN DRS / RA	DATE 4/20/18

GARVER JOB
4701W
SHEET
16
OF
57

GARVER
924 N. MAIN
WICHITA, KS 67203
316.264.8800
WWW.GARVERUSA.COM

© Copyright 2018, Garver

F:\Projects\Projects 4700-4799\4701W (Rose Marie waterline replacement)\LINE 3 - Santa Fe 2-2.dwg