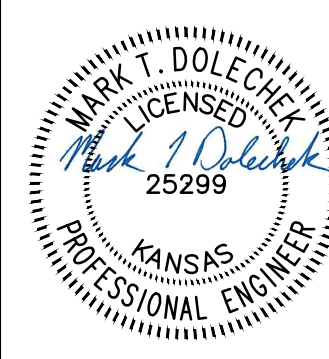
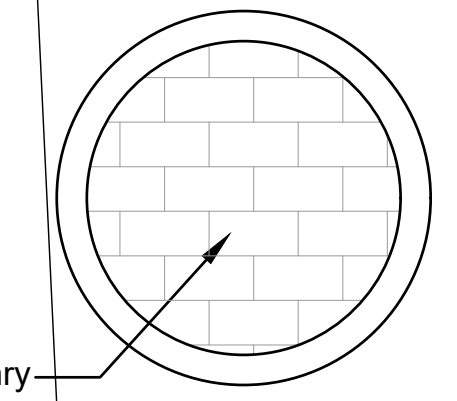
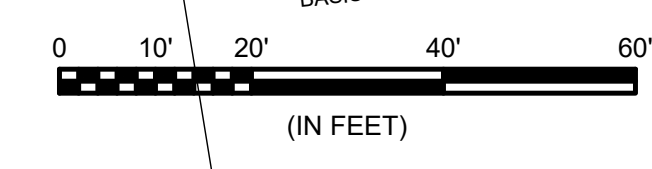
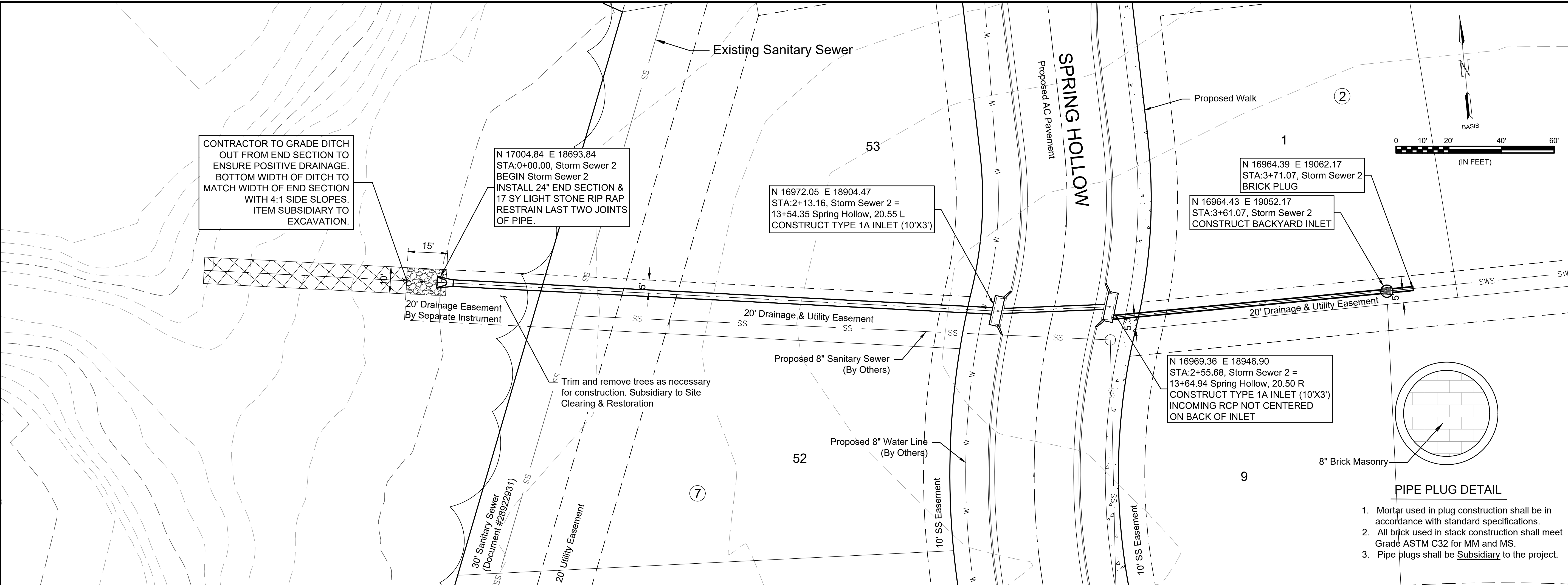




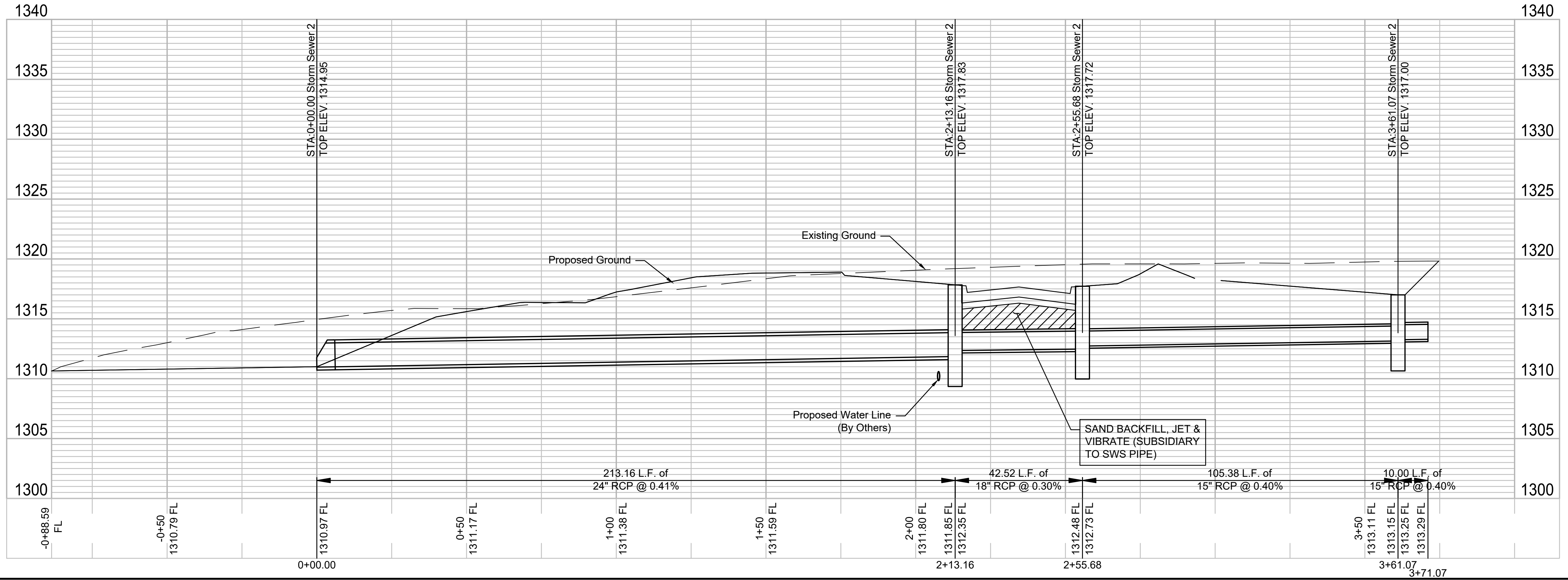
© 2017 GARVER, LLC
 THIS DOCUMENT, ALONG WITH THE IDEAS AND DESIGNS CONVEYED HEREIN, SHALL BE CONSIDERED INSTRUMENTS OF PROFESSIONAL SERVICE AND ARE PROPERTY OF GARVER, LLC. ANY USE, REPRODUCTION, OR DISTRIBUTION OF THIS DOCUMENT, ALONG WITH THE IDEAS AND DESIGN CONTAINED HEREIN, IS PROHIBITED UNLESS AUTHORIZED IN WRITING BY GARVER, LLC OR EXPLICITLY ALLOWED IN THE GOVERNING PROFESSIONAL SERVICES AGREEMENT FOR THIS WORK.



Digitally Signed 10/11/2018



- PIPE PLUG DETAIL**
1. Mortar used in plug construction shall be in accordance with standard specifications.
 2. All brick used in stack construction shall meet Grade ASTM C32 for MM and MS.
 3. Pipe plugs shall be Subsidiary to the project.



REV.	DATE	DESCRIPTION	BY

CITY OF WICHITA
 WICHITA, KS

CLEAR RIDGE ADDITION,
 PHASE 1

Storm Sewer 2

JOB NO.: 17264889
 DATE: OCT 2018
 DESIGNED BY: MTD
 DRAWN BY: MTD/CDJ

BAR IS ONE INCH ON ORIGINAL DRAWING
 0 1" IF NOT ONE INCH ON THIS SHEET, ADJUST SCALES ACCORDINGLY.

DRAWING NUMBER

SHEET NUMBER **18** OF **25**

File: L:\2017\17264889 - Clear Ridge Phase 1\Drawings\C3D\Paving + Storm\17 - Storm Sewer 2.dwg, Last Save: 10/10/2018 3:08 PM, Last saved by: MTDolechek, Last plotted by: Dolechek, Mark, T., Plot Style: ---, Plot Scale: 1:2,865, Plot Date: 10/11/2018 9:30 AM, Plotter used: None