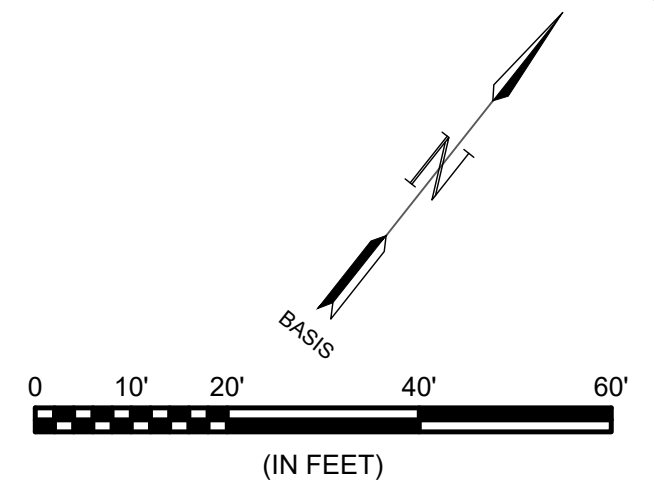
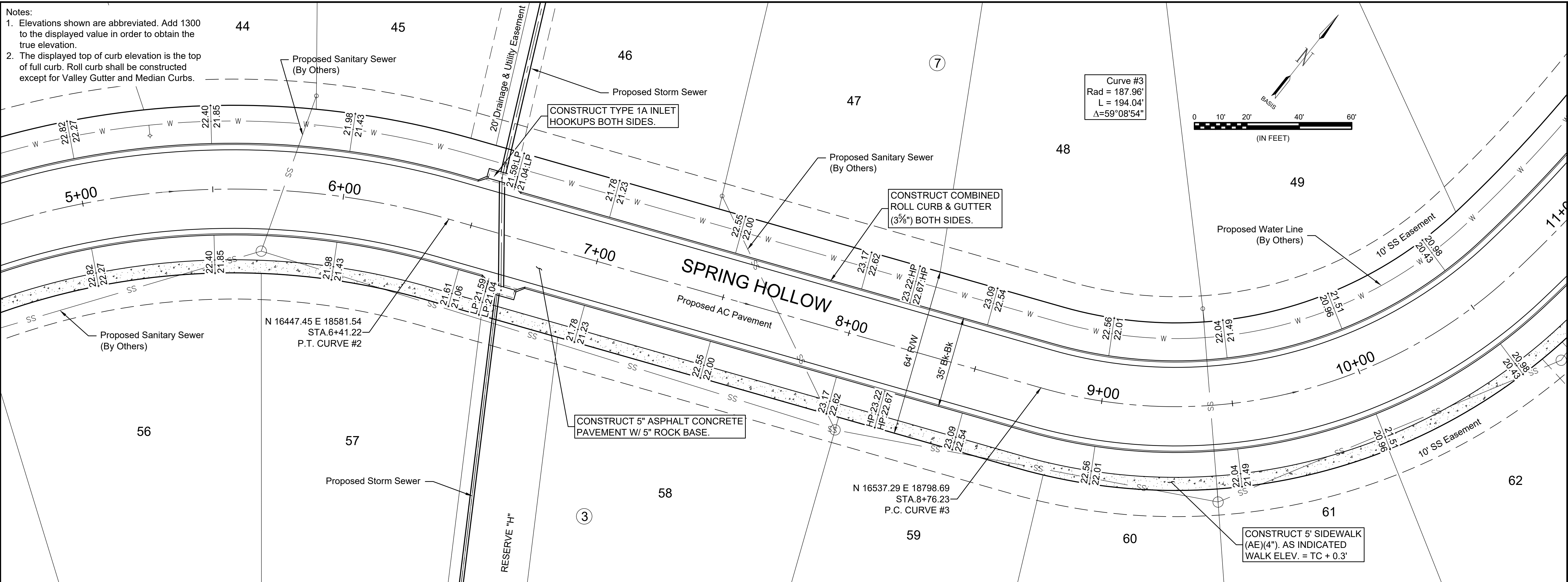


- Notes:
- Elevations shown are abbreviated. Add 1300 to the displayed value in order to obtain the true elevation.
  - The displayed top of curb elevation is the top of full curb. Roll curb shall be constructed except for Valley Gutter and Median Curbs.

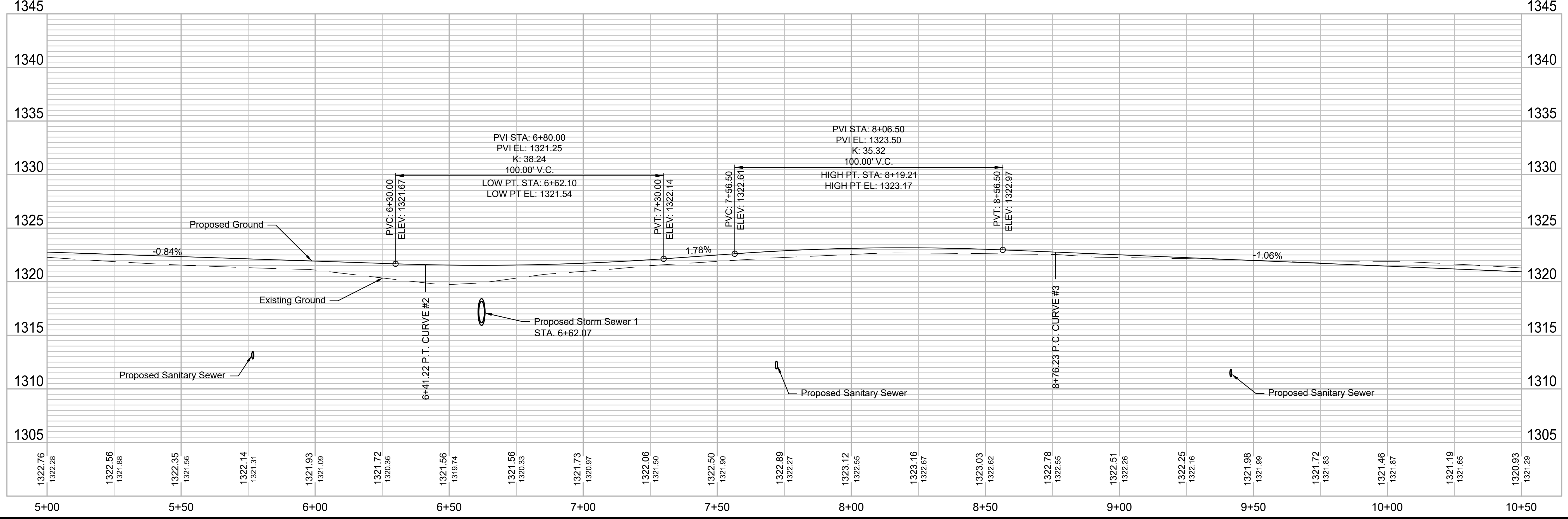


**GARVER**

© 2017 GARVER, LLC  
 THIS DOCUMENT, ALONG WITH THE IDEAS AND DESIGNS CONVEYED HEREIN, SHALL BE CONSIDERED INSTRUMENTS OF PROFESSIONAL SERVICE AND ARE PROPERTY OF GARVER, LLC. ANY USE, REPRODUCTION, OR DISTRIBUTION OF THIS DOCUMENT, ALONG WITH THE IDEAS AND DESIGN CONTAINED HEREIN, IS PROHIBITED UNLESS AUTHORIZED IN WRITING BY GARVER, LLC OR EXPLICITLY ALLOWED IN THE GOVERNING PROFESSIONAL SERVICES AGREEMENT FOR THIS WORK.

MARK T. DOLECHEK  
 LICENSED PROFESSIONAL ENGINEER  
 KANSAS  
 25299  
 Digitally Signed 10/11/2018

REV.	DATE	DESCRIPTION	BY



CITY OF WICHITA  
 WICHITA, KS  
 CLEAR RIDGE ADDITION,  
 PHASE 1

Spring Hollow

JOB NO.: 17264889  
 DATE: OCT 2018  
 DESIGNED BY: MTD  
 DRAWN BY: MTD/CDJ

BAR IS ONE INCH ON ORIGINAL DRAWING  
 IF NOT ONE INCH ON THIS SHEET, ADJUST SCALES ACCORDINGLY.  
 DRAWING NUMBER

SHEET NUMBER **8** OF **25**

File: L:\2017\17264889 - Clear Ridge Phase 1\Drawings\C3D\Paving + Storm\08 - Spring Hollow.dwg Last Save: 10/8/2018 1:55 PM Last saved by: DRSLandrich  
 Last plotted by: Dolechek, Mark T. Plot Style: --- Plot Scale: 1:2,885 Plot Date: 10/11/2018 9:27 AM Plotter used: None