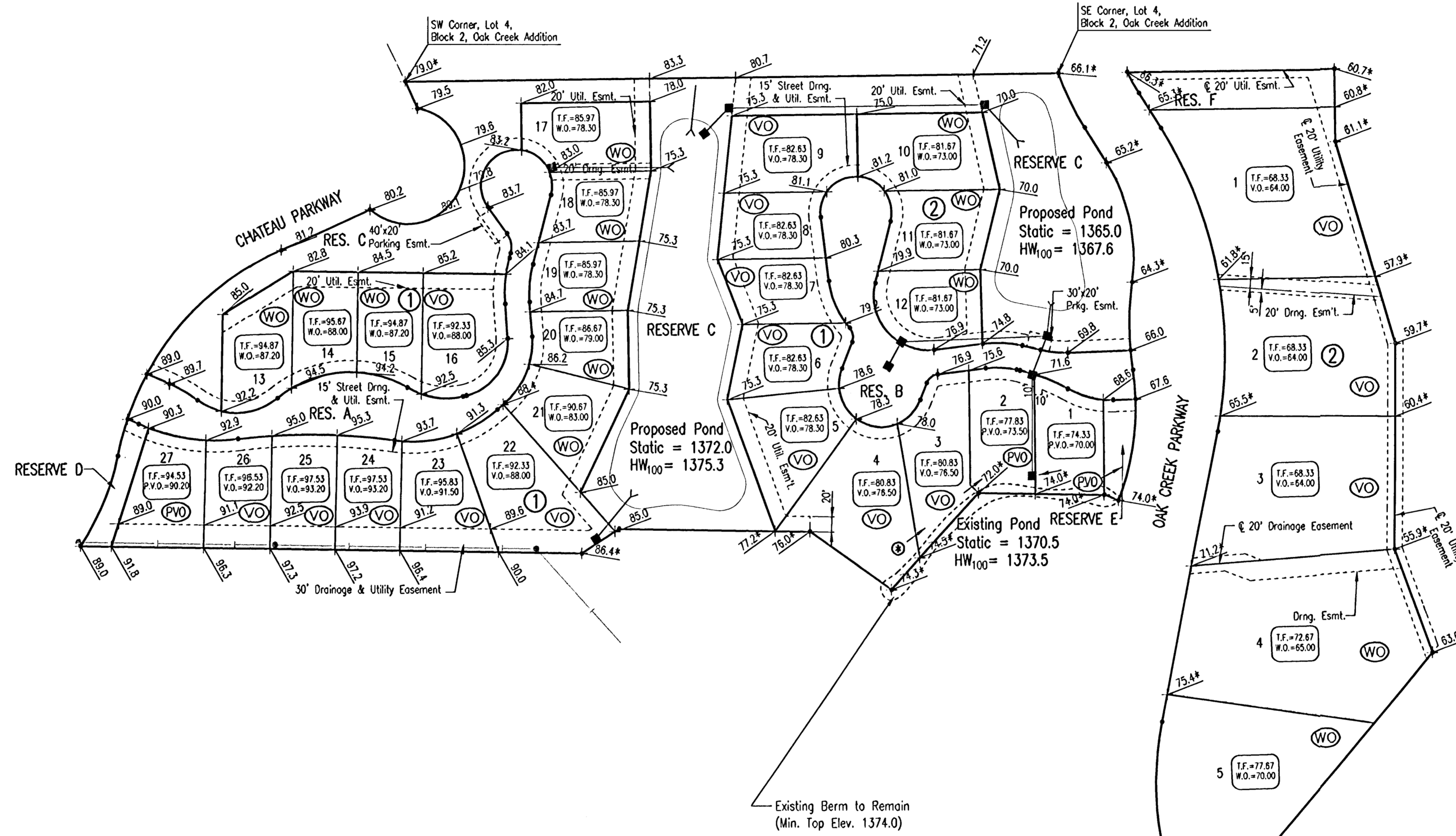


OAK CREEK 3RD



SCALE: 1" = 100'

• = 1/2" REBAR W/PEC CAP UNLESS OTHERWISE NOTED

BENCHMARKS *BM*

- BM #209
Chiseled "d" on NW corner of traffic signal base, at SW corner of Greenwich Road & 21st Street North
Elev. = 1363.54 N.G.V.D.
176.14 City Datum
- BM #215
Chiseled "x" in top center curb inlet 600' W of Greenwich Road on S side of 21st Street North.
Elev. = 1363.265 N.G.V.D.
175.865 City Datum
- BM #216
Chiseled "d" on S end of curb & gutter at E of Median, Target entrance on N side of 21st Street North 1400' ± W of Greenwich Road.
Elev. = 1364.55 N.G.V.D.
177.15 City Datum

LEGEND

- SPOT ELEVATION
- HIGH POINT ELEVATION
- MATCH EXISTING ELEVATION
- STORM SEWER AND INLET
- STORM SEWER AND MANHOLE
- VIEW-OUT BASEMENT
- VIEW-OUT BASEMENT
- VIEW-OUT BASEMENT

ADD 1300 TO ELEVATIONS FOR N.G.V.D. DATUM.

MINIMUM PAD ELEVATIONS (LOWEST OPENING) SHALL BE AS FOLLOWS:			
BLOCK	CITY DATUM	N.G.V.D.	
BLOCK 1	LOT 1	182.6	1370.0
	LOT 2	186.1	1373.5
	LOTS 3-4	189.1	1376.5
	LOTS 5-9	190.9	1378.3
	LOTS 10-12	182.6	1370.0
	LOTS 17-21	190.9	1378.3
BLOCK 2	LOTS 1-2	176.6	1364.0
	LOTS 3-4	175.6	1363.0

③ Backyard drainage protected by private cross-lot drainage agreement

Drawn 10-23-2006 4:11:16 PM by BMM
 Checked 11-01-2006 10:44:44 AM by BJS
 C:\2006\06517\000\06517-000-C-1-CORNER

No.	Revision	By	Date
OAK CREEK 3RD			
FOUR CORNER PLAN			
Professional Engineering Consultants, P.A. 303 S. TOPEKA • WICHITA, KANSAS 67202 316-262-2691 • FAX 316-262-3003			
Designed by	BDB, BMM	Job No.	35-06572-000
Drawn by	BJS, TAT	Date	February 2006
			Sheet 4 of 45