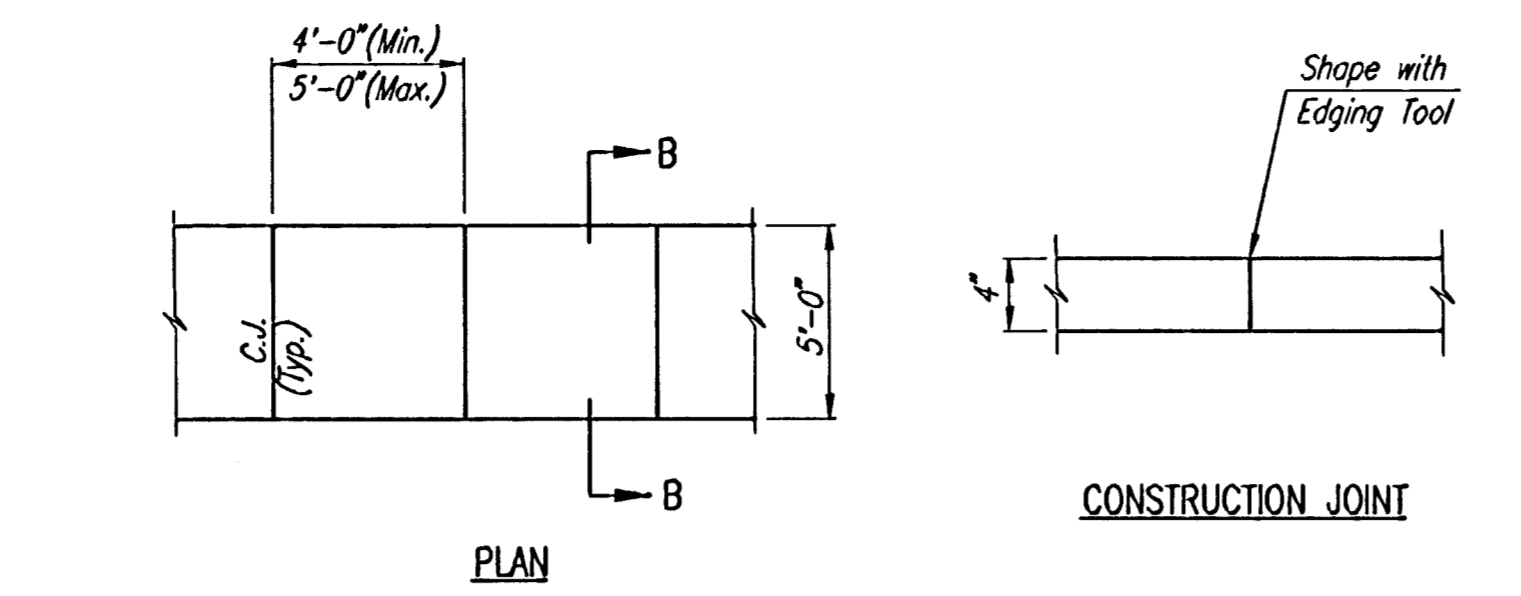
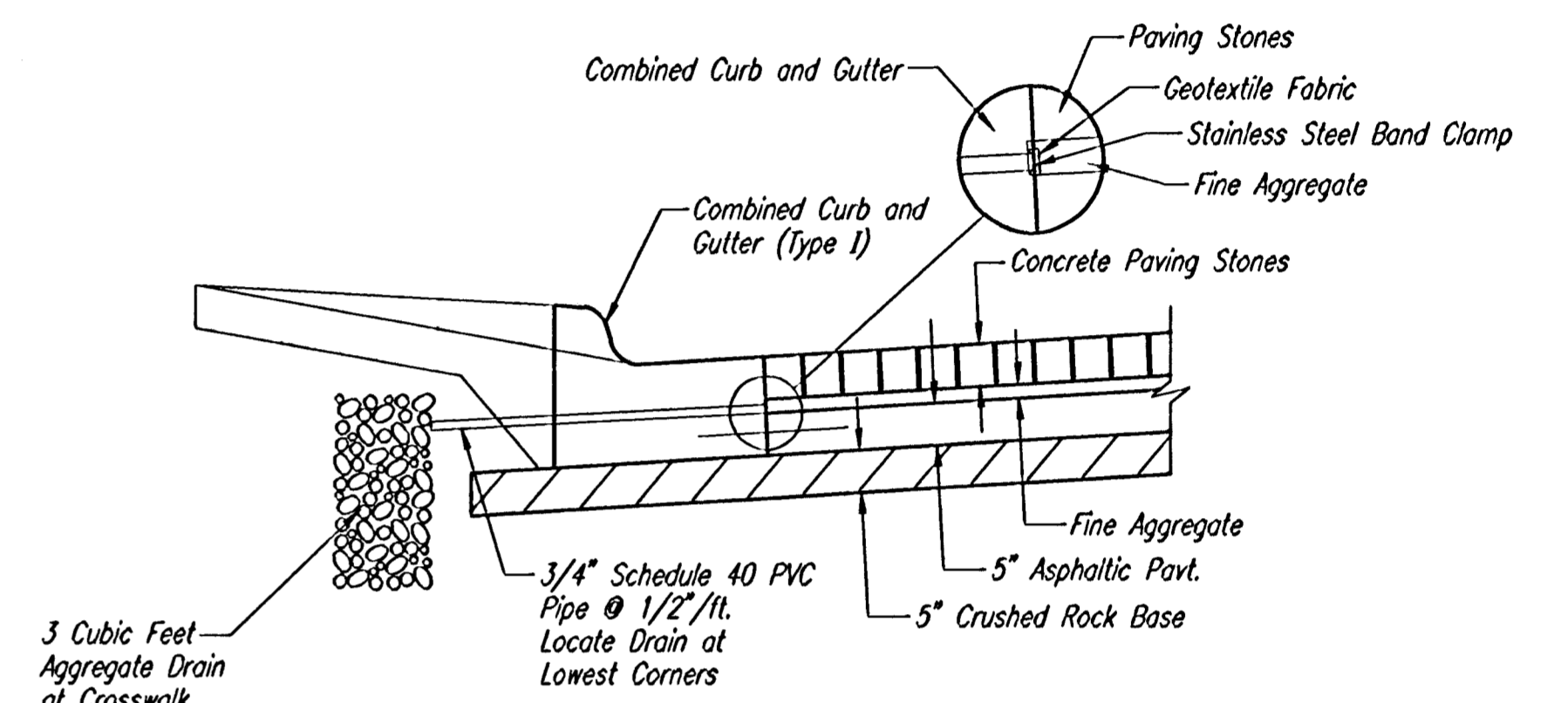
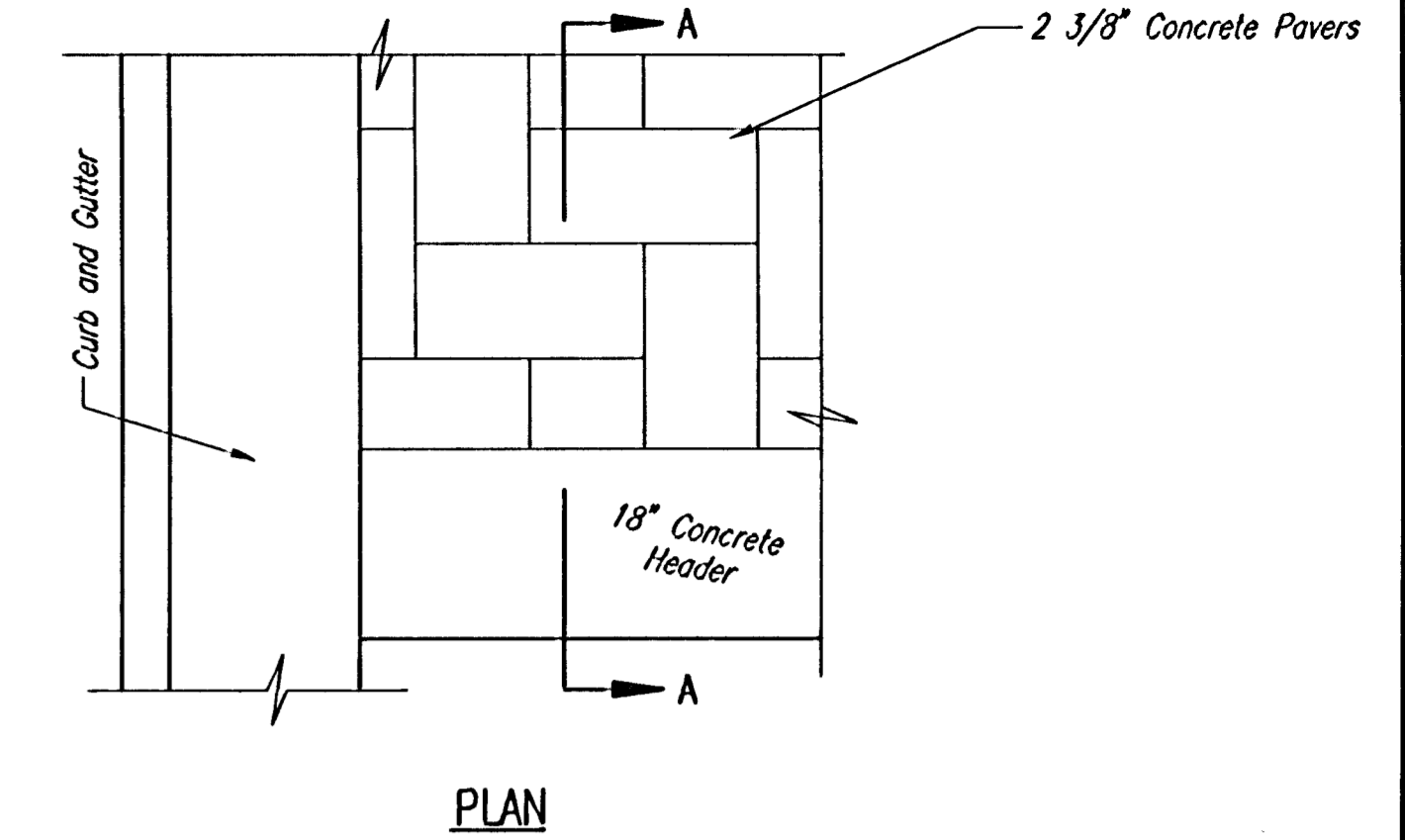


COMPACTED FILL DETAIL
WHERE SIDEWALK IS CONSTRUCTED
(See Plan Sheets for Locations)

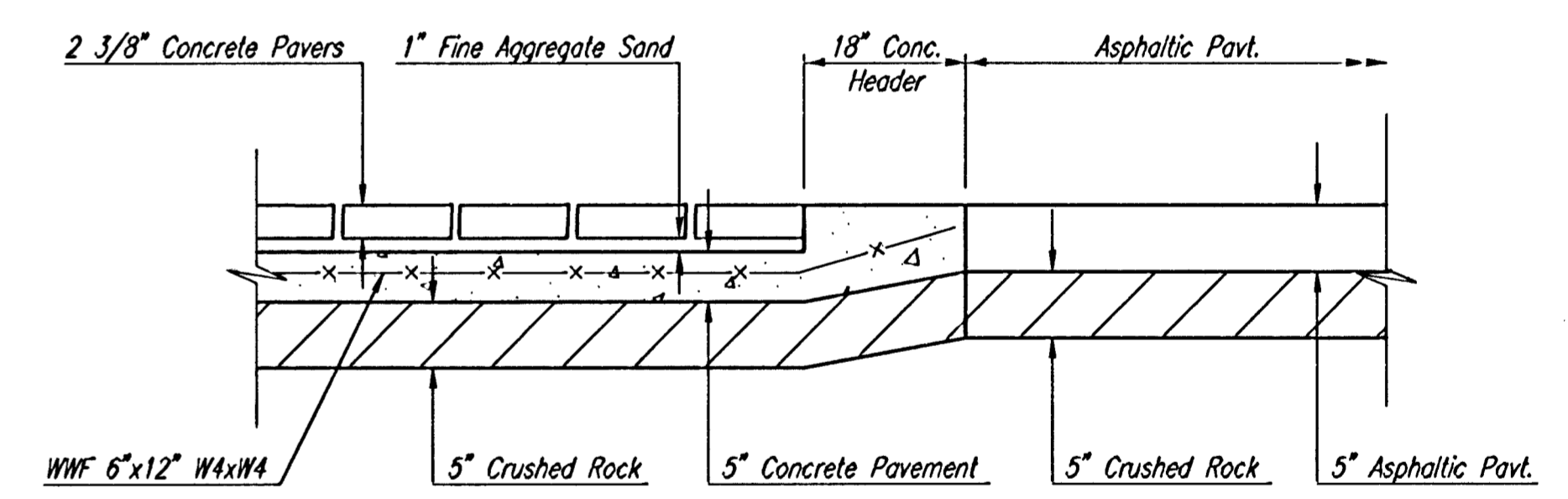


4" WALK DETAILS
CONSTRUCTION JOINT
CONTRACTION JOINT
No sawn contraction joints will be allowed

- GENERAL NOTES**
BRICK PAVEMENT
- CONCRETE PAVING BRICK SHALL BE 2 3/8" MIN. THICKNESS AND MEET OR EXCEED ASTM C-936-82. PAVING STONES TO BE "HOLLAND STONE" IN THE ANTIQUE RED COLOR AS MANUFACTURED BY PAVESTONE CO., OR APPROVED EQUAL. STONES SHALL BE LAID IN A HERRINGBONE PATTERN.
 - SAND BEDDING SHALL MEET THE CITY'S REQUIREMENTS FOR FINE AGGREGATE. AN UNCOMPACTED SAND LAYING COURSE SHALL BE SPREAD EVENLY OVER THE AREA TO BE PAVED AND THEN SCREEDED TO A LEVEL OF APPROXIMATELY 1" THICKNESS. ONCE SCREEDED AND LEVELED TO THE DESIRED ELEVATION, THE SAND LAYING COURSE SHALL NOT BE DISTURBED IN ANY WAY.
 - THE PAVING BRICK SHALL BE INSTALLED PERPENDICULAR AND PARALLEL TO THE MAJOR AXIS OF THE CROSSWALK OR AREA BEING PAVED. STONES SHALL BE PLACED WITH THE CHAMFERED SIDE UP, AND JOINT SPACES KEPT UNIFORM APPROXIMATELY 1/8" THICK. THE GAPS AT THE EDGE OF THE PAVED SURFACE SHALL BE FILLED WITH STONES CUT TO FIT. CUTTING SHALL BE ACCOMPLISHED TO LEAVE A CLEAN EDGE TOWARD THE TRAFFIC SURFACE, USING A MASONRY SAW. WHENEVER POSSIBLE, NO CUTS SHOULD RESULT WITH A PAVER LESS THAN ONE-THIRD OF ITS ORIGINAL DIMENSION.
 - PAVING BRICK SHALL BE VIBRATED TO THEIR FINAL LEVEL IN THE SAND LAYING COURSE BY TWO OR THREE PASSES OF A VIBRATING COMPACTOR CAPABLE OF 3000 TO 5000 POUNDS COMPACTION FORCE WITH THE SURFACE CLEAN AND JOINTS OPEN.
 - AFTER VIBRATION, CLEAN CONCRETE SAND SHALL BE SPREAD OVER THE PAVING STONE SURFACE, ALLOWED TO DRY, AND VIBRATED INTO JOINTS WITH ADDITIONAL PASSES OF THE PLATE VIBRATOR SO AS TO COMPLETELY FILL THE JOINTS. A LIGHT COATING OF SAND SHALL BE SWEEPED OVER THE COMPLETED SURFACE AND LEFT TO WEATHER IN.
 - PLACEMENT AND COMPACTION OF SAND FOR INSTALLATION OF THE PAVING BRICK IS SUBSIDIARY TO THE PAVING BRICK ITEM. PLACEMENT OF THE 5" REINFORCED CONCRETE PAVEMENT UNDER ALL PAVING BRICK AREAS, INCLUDING THE 18" CONCRETE HEADER AT CROSS WALK, WILL BE PAID FOR AS "REINFORCED CONCRETE PAVEMENT (5)".

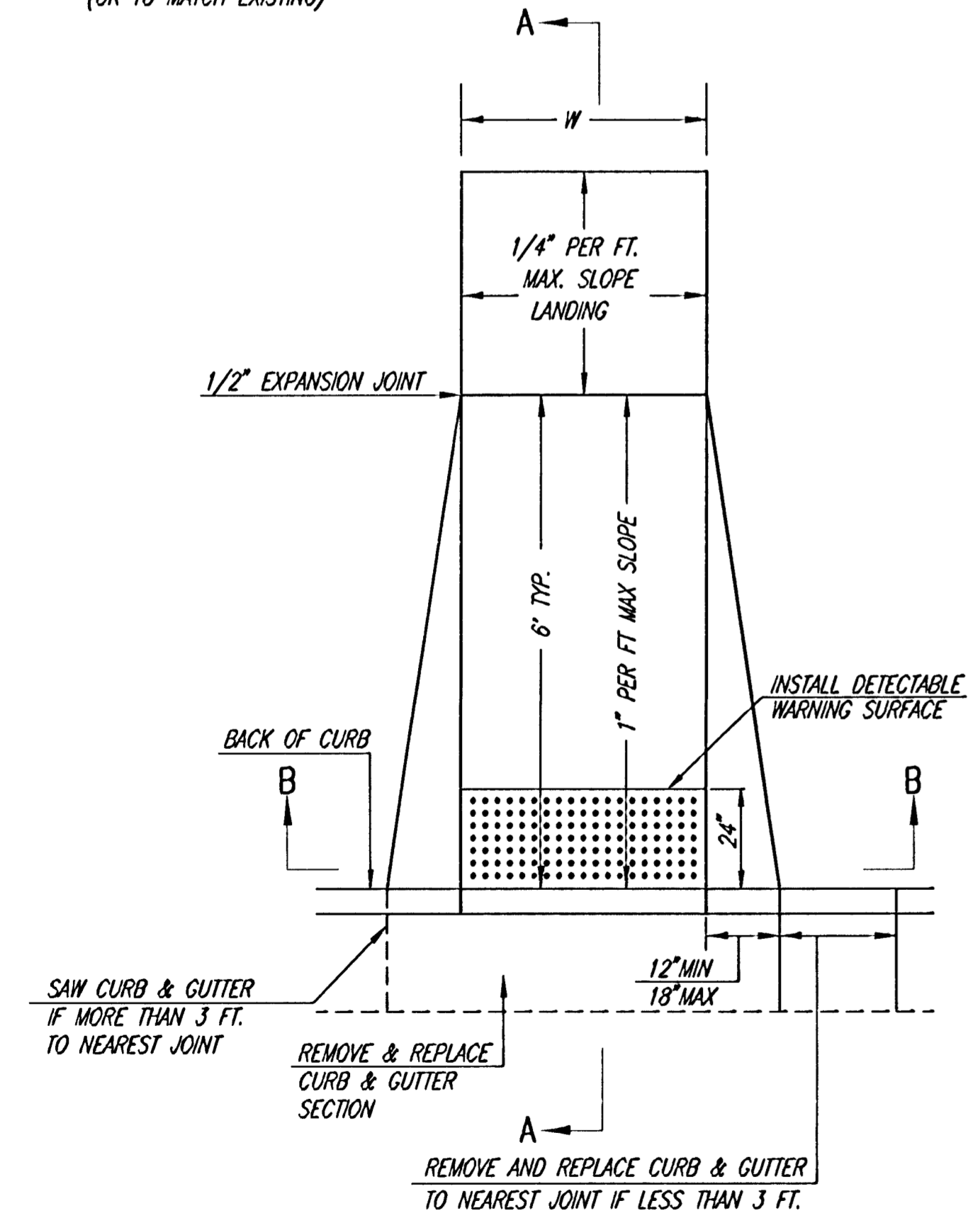


BRICK PAVEMENT DRAIN DETAIL
(4 Required)

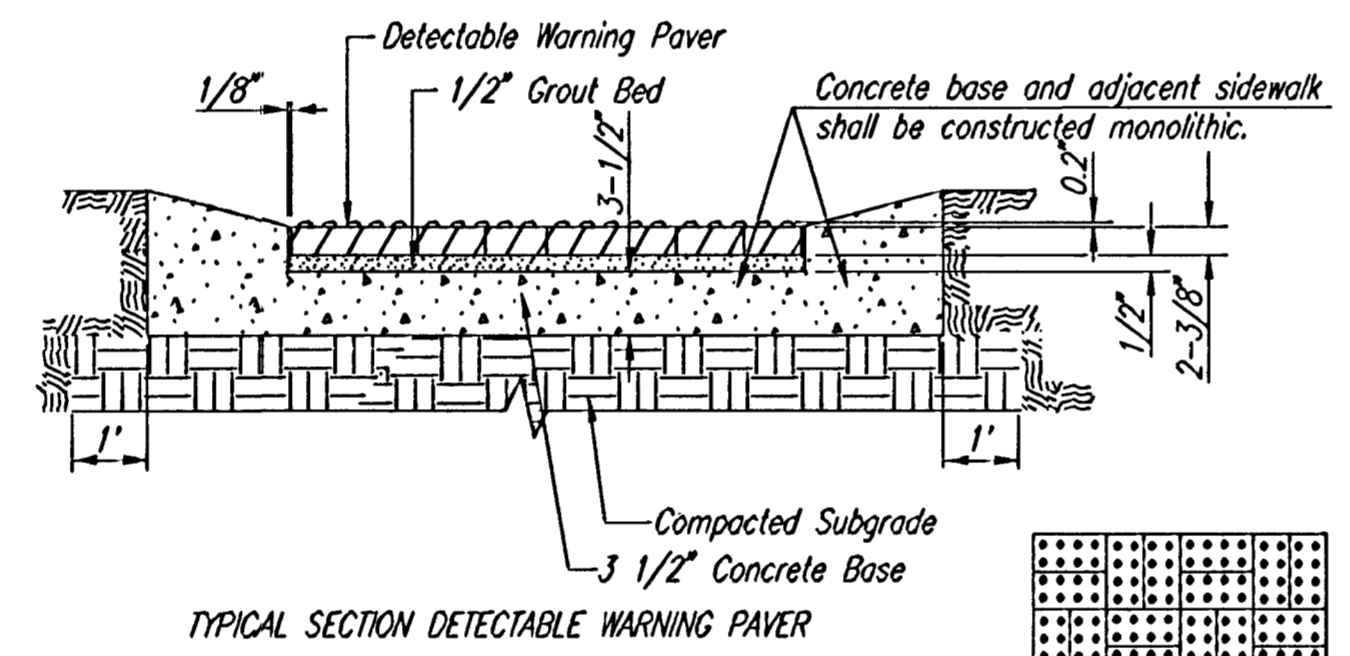


SECTION A-A THRU CROSS WALK
CROSS WALK DETAILS

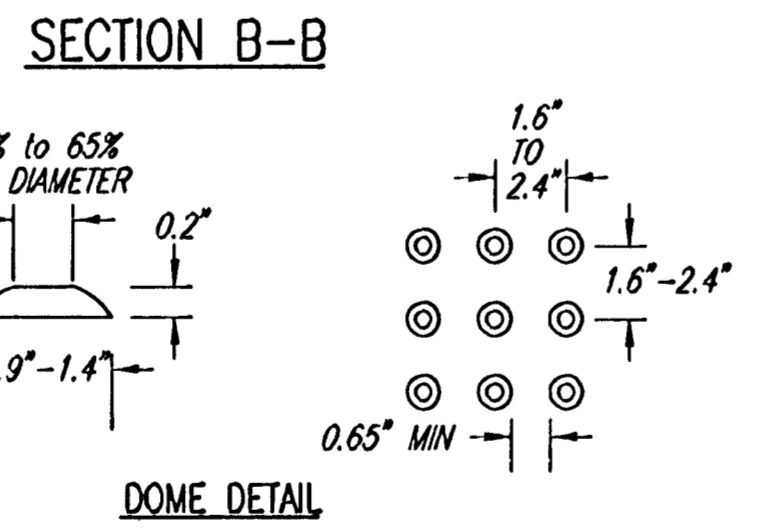
W= 4'0" FOR STANDARD RAMP
W= 5'0" FOR RAMPS AT SCHOOL CROSSWALKS
(OR TO MATCH EXISTING)



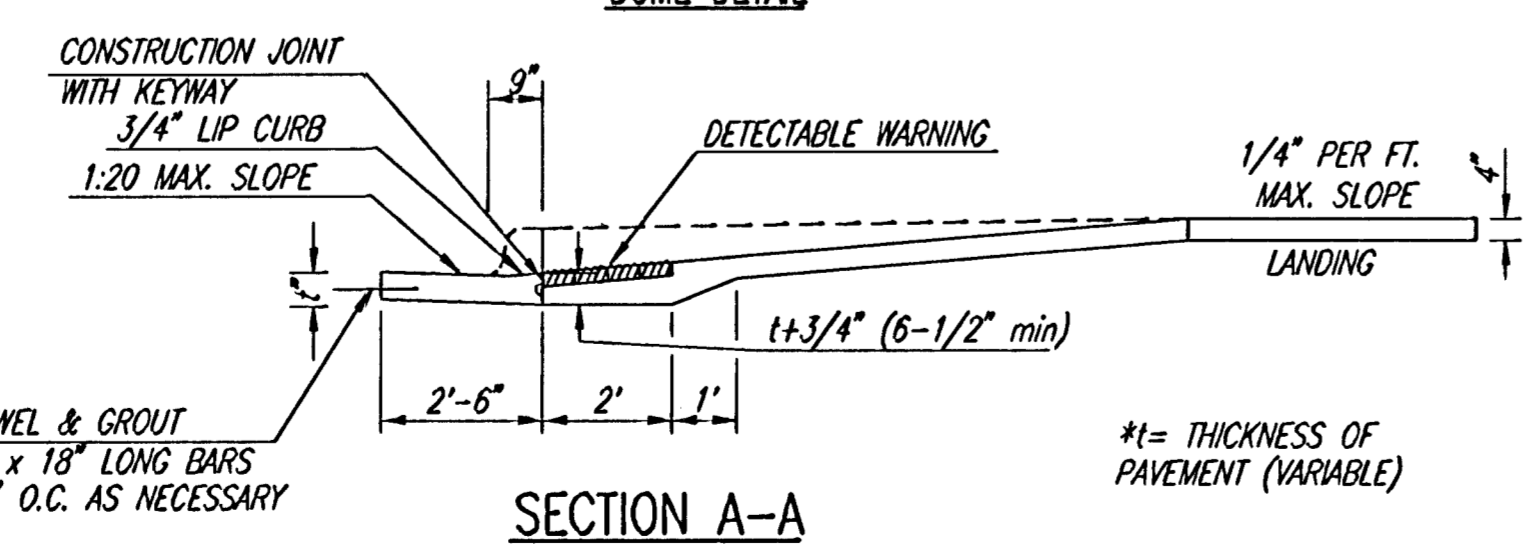
(TYPE A)
STANDARD WHEELCHAIR RAMP
WITH DETECTABLE WARNING
CONSTRUCTION DETAIL FOR STREETS
WITH COMBINED CURB & GUTTER



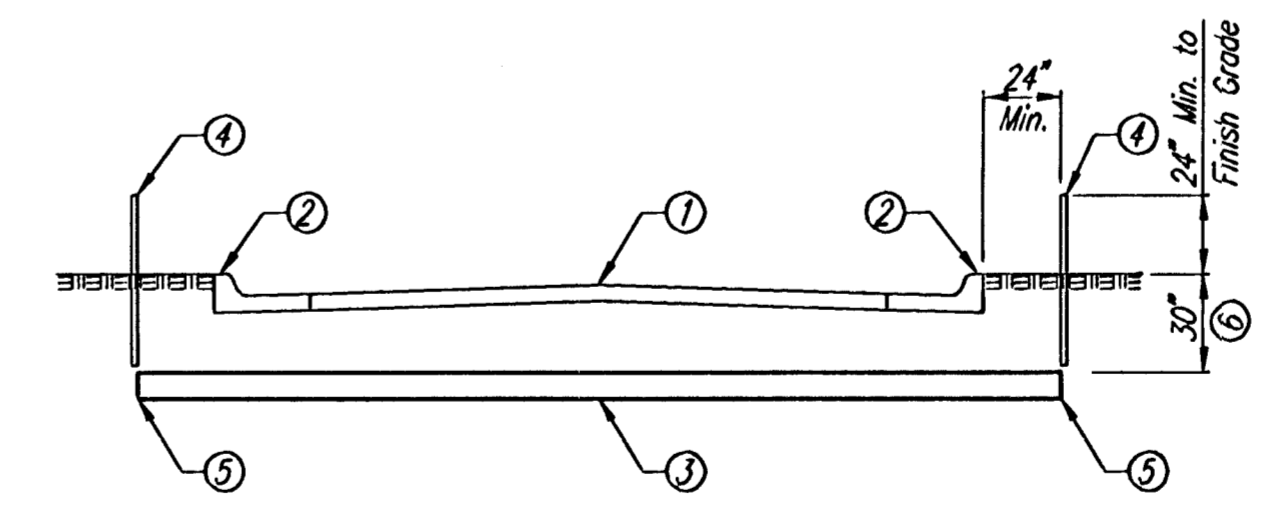
NOTE: RAMPS TO COMPLY WITH LATEST ADAAG GUIDELINES.
PAVESTONE DETECTABLE WARNING PAVERS (OR AN APPROVED EQUAL) SHALL BE USED IN ALL WHEELCHAIR RAMPS. THE RED PAVER SHALL BE INSTALLED USING A BASKET WEAVE/PARQUET PATTERN. OTHER PATTERNS MAY BE USED WITH APPROVAL OF ENGINEER. SAND FILL JOINTS. ALIGN DOMES IN THE DIRECTION OF PEDESTRIAN TRAVEL.



DOMES DETAIL



TYPICAL WHEELCHAIR RAMP DETAILS



CLASS 200 PVC SLEEVES

Payment for "PVC Sleeves" Shall be Per Each, Regardless of Length, and Shall Include Items 2 thru 5 Listed Below.

- Pavement/Street
- Permanent Mark on Top of Curb, Stamped in Wet Concrete—"x" or "s"
- 8" Class 200 PVC Sleeve Extended 2' Past Back of Curbs. Sleeves Shall be Bedded and Backfilled in Accordance with City of Wichita Specifications for Flexible Sanitary/Storm Sewer Pipe.
- Temporary T-Post Marker, Until Permanent Benchmark is Made in Concrete (2 Total)
- 8" PVC Caps—Not Glued (2 Total)
- Adjust Depth Where Necessary to Avoid Other Utilities.

AUGUST 4, 2003

Save: 10-10-2006 10:36:02 AM by BJS
Plot Scale: 1/10" = 1'-0"
3/23/06 08:57:00 000106272-000-C-MISD011

No.	Revision	By	Date
OAK CREEK 3RD			
MISCELLANEOUS PAVING DETAILS			
Professional Engineering Consultants, P.A.			
303 S. TOPEKA • WICHITA, KANSAS 67202 316-262-2691 • FAX 316-262-3003			
Designed by	BDB, BMM	Job No.	35-06572-000
Drawn by	BJS, TAT	Date	February 2006
			Sheet 15 of 45