

GENERAL NOTES:

1. The Contractor shall comply with all applicable safety regulations. All construction shall be completed following current City Standard Specifications and special Provisions.

2. Contractor will be required to provide notice to utility companies a minimum of seventy-two (72) hours prior to any excavation, as follows:

Kansas One-Call 687-2470

The Contractor must notify the following in case of an emergency:

AT&T 1-800-246-6464
 Black Hills Energy 1-800-694-8989
 City of Wichita Water & Sewer 1-316-219-8921
 City of Wichita Stormwater 1-316-268-4090
 City of Wichita Traffic 1-316-268-4034
 Cox Communications 1-888-249-3530
 Kansas Gas Service 1-888-482-4950
 Westar Energy 1-800-544-4857

3. Utility service lines, poles, etc. are to be adjusted as necessary by others prior to construction unless the plans specifically call for their adjustment by the Contractor or unless the plans specifically identify a utility to be adjusted by its owner during construction. Existing utilities and their location, as shown on the plans, represent the best information obtainable for design. The Contractor will be required to work around existing utilities within the right-of-way which do not conflict with proposed construction.

4. Rubble from the removal of miscellaneous structures and excess excavation which is to be wasted shall be disposed of on sites to be provided by the Contractor. These sites shall be approved by the Engineer as to suitability, appearance and site location. Locations, in the opinion of the Engineer, that will leave and unsightly appearance will not be approved. All disposal sites must be approved by the Kansas Department of Health and Environment. Material either stockpiled or disposed of in a flood plain would require a Kansas State Board of Agriculture permit. Any material dumped in waters of the United States or wetlands is subject to U.S. Corps of Engineers permitting regulations. Any material buried or stockpiled beyond approved construction limits will require additional archaeological investigations unless buried in a previously approved borrow location.

5. Trees and shrubs in public right-of-way which are in direct conflict with proposed new construction shall be removed by the Contractor with the City Engineer's approval. Trees and shrubs which are not in direct conflict with proposed new construction shall be saved and protected from damage.

6. The Contractor shall give all property owners and/or tenants of developed property abutting the construction of this project a minimum of ten (10) days notice prior to start of construction.

7. The Contractor shall be responsible for preserving property irons. The Contractor will be required to re-establish any property irons which are damaged or destroyed by his construction operations. Such irons shall be re-established by a licensed land surveyor in accordance with state laws.

8. The Engineering Division shall field locate water valves one time during construction when requested by the Contractor. It shall be the Contractor's responsibility to preserve such field locations during the construction process. Water valves, valve boxes or fire hydrants damaged during construction shall be repaired by Contractor at his own expense. Valve boxes and water meters within the project limits shall be adjusted to match field grades by the contractor.

9. The Contractor shall notify the inspecting engineer and Tom Mason at 316-268-4574 with the City of Wichita with the anticipated construction start date and notify them of project completion. Staking and inspection for this project will be the responsibility of the Contractor.

10. If traffic will be impacted by construction, a traffic control plan must be submitted and approved by the City Traffic Engineer, Brian Coon at traffic@wichita.gov before construction can begin. The Contractor shall be responsible for all traffic control measures to facilitate construction. All construction zone markings and signage shall conform to the latest version of the Manual on Uniform Traffic Control Devices (MUTCD) as published by the US Dept. of Transportation, Federal Highway Administration. All costs associated with construction markings and signage shall be the Contractors responsibility.

11. All elevations shown are NAVD 88.

12. All areas disturbed during construction that will not be under proposed pavement shall be restored to match existing conditions.

13. Any sidewalk, drive approach, or street pavement removed to construct project must have a pavement cut permit and be replaced by the City contractor. Permits can be obtained by calling 316-268-4501 or 316-268-4480.

14. All applicable fees (tap, equity, in lieu of & main benefit) must be paid before any connections can be made on this project. Quotes can be obtained on fees by calling 316-268-4555.

15. City Maintenance of sanitary sewer mains ends at last structure within the easement or right-of-way.

16. All stubs and capped pipes shall be located with green plastic tape in the same manner as risers. Contractor shall limit the extent of trench open overnight and weekends to less than 50 feet.

17. Connecting to Existing Manholes: Prior to laying sewer lines using existing stubs in existing manholes, the Contractor shall expose and verify the elevation, grade and alignment of existing stubs and notify the Engineer of any deviation from the plans. Where the stub is unusable due to elevation, grade or alignment, the Contractor shall remove the stub and plug the hole, and reshape the existing manhole invert to provide smooth flow. Where connecting to an existing manhole that does not have an existing stub, the Contractor shall core cut into existing manhole wall to make connection using approved water stop gasket, and reshape the existing manhole invert to provide smooth flow. The cost to connecting to existing manholes is incidental to the project.

18. Contractor shall limit the extent of trench open overnight and weekend to less than 50 feet.

19. Contractor shall provide positive drainage away from all manhole covers.

20. The Contractor shall prevent any construction debris from entering the existing sanitary sewer during construction.

21. The Contractor shall be responsible for maintaining continuous flow of sewage through construction. Contractors proposed method for maintaining sewage flow shall be submitted and approved by the Sewer Maintenance Division (316-268-4073) prior to starting and by-passing of sewage flows.

22. Any over excavation from manhole and pipe removal shall be backfilled with AB-3 compacted to 90-95% ASTM D698.

23. The Contractor shall prevent from damage and support existing utilities through construction as approved by the utility owner and the Engineer at the contractors expense.

24. All excess excavation shall remain on-site and shall be stockpiled or spread at a location determined by the engineer.

25. Contractor shall grade around exposed manholes at a 1:1 slope. Manholes set lower than existing grade shall have a 9" berm constructed around manhole to prevent infiltration into sanitary sewer system. Cost of dirt, labor, equipment, etc. to be incidental to cost of manhole.

26. All areas disturbed during construction shall be seeded, mulched, and fertilized as follows (Permanent Seeding):

Seed: Kansas Premium Fescue Blend: 8 lbs/1000 sq. ft.
 Mulch: Prairie Hay: 2 tons/acre
 Fertilizer: 12-24-12: 850 lbs./acre

All costs associated with seeding, mulching, and fertilizing shall be included in bid term "Seeding". All seeding operations shall conform to City of Wichita Standard Specifications.

27. The Contractor shall not begin work on the project until the Project Inspector is assigned and on site. Any work completed without inspection will be required to be uncovered for inspection at the Contractor's expense.

28. All existing and proposed erosion control measures including silt fences, erosion control mat, straw bales, inlet barriers, and const. entrance shall be maintained throughout construction by the contractor and until project is accepted by the City of Wichita. The on-site engineer shall complete weekly reports on the status of erosion control measures. The contractor shall be required to comply with maintenance and/or replacement of erosion control measures as determined by the on-site engineer until project is accepted by City of Wichita. Maintenance and/or replacement of erosion control measures to be paid by L.S. bid item "Site Restoration".

BENCHMARKS

#1 COW BENCHMARK TOP OF HUBGUARD ON SW CORNER OF RCBC 750'± WEST OF DUGAN ROAD ALONG THE SOUTHSIDE OF MACARTHUR.
 ELEV. = 1299.91 NAVD88

#2 BENCHMARK MAG NAIL IN SOUTH FACE OF EAST GATE AT ENTRY TO PROPERTY.
 ELEV. = 1304.28 NAVD88

SANITARY SEWER SYSTEM to serve **Wichita Union Stockyard Addition** 6251 W. MacArthur Road CITY OF WICHITA, KANSAS

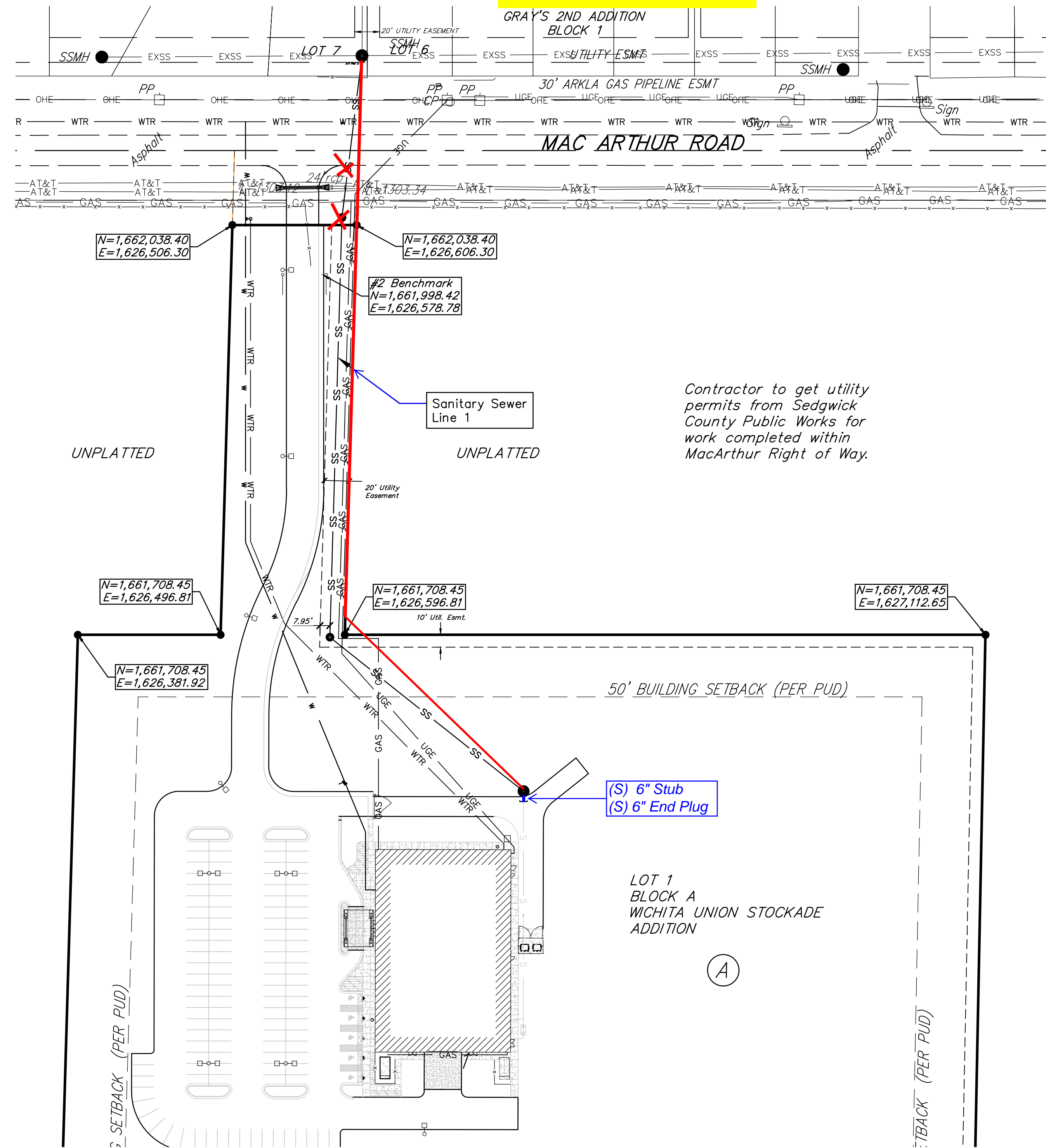
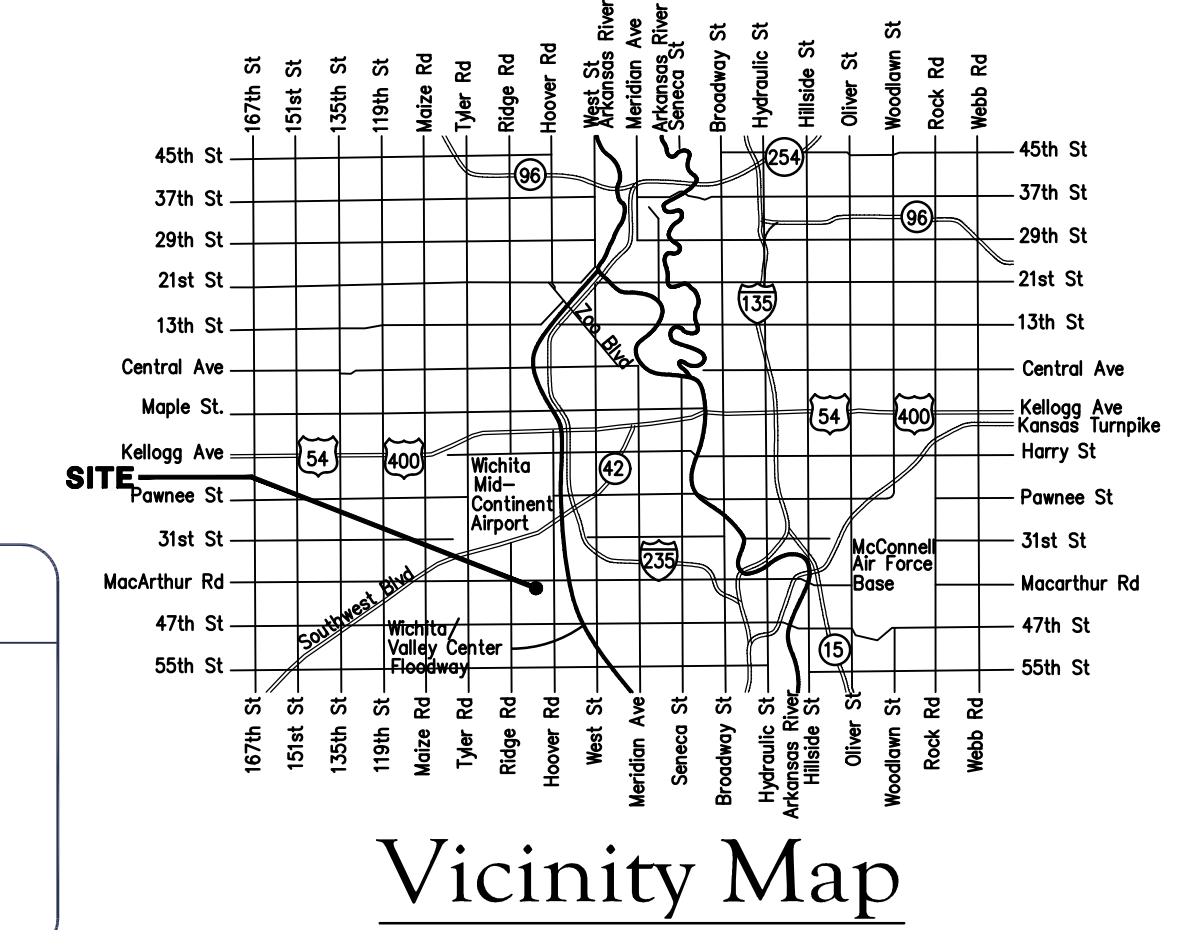
Gary Janzen, P.E. City Engineer

Project Number
 2313 PPS (184011)

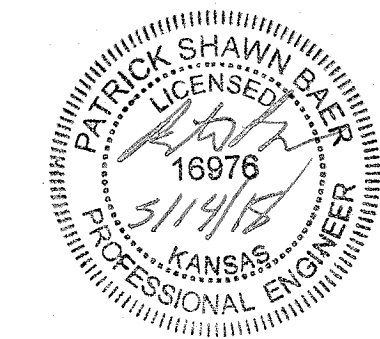
T. Mason - City of Wichita, Inspector
 Stub
 Release Date: 11/14/2018
 : apr 11/21/2018

AS BUILTS

| | |
|---|--|
| Contractor: Ewertz Excavation 11/08/2018 | Project Inspector: Larry Gann KEMILLER ENGINEERING PA 117 E. Lewis, Wichita, KS 67202 (316)264-0242 |
|---|--|



Contractor to get utility permits from Sedgwick County Public Works for work completed within MacArthur Right of Way.



APPROVED AS NOTED
 BY WICHITA PUBLIC WORKS
 ENGINEERING DIVISION
 Utilities

Engineering *Julianne Kellerman* 5-15-18

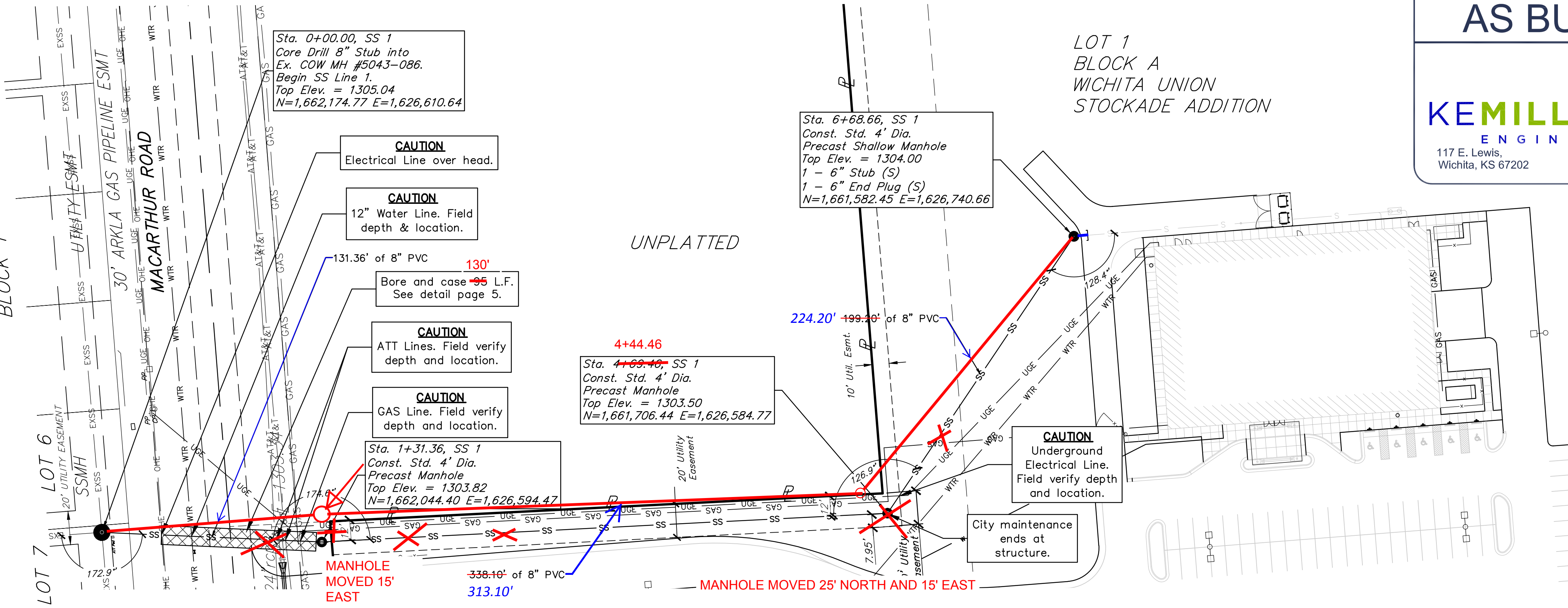
[Signature] 5-16-18

NOTE TO CONTRACTORS

Installation, inspection and testing for this project is to be provided by a Licensed Consulting Engineering Firm under contract with the Owner/Developer. Said inspection to be in accordance with the City of Wichita standard construction engineering practices and certified by a Licensed Professional Engineer in the state of Kansas. No work shall be performed by the Contractor without such inspection nor shall any work be commenced without written authorization by the City Engineer. All Construction and Materials shall comply with the City of Wichita Specifications and Standards and Special Provisions (on file and available at Wichita.gov).

An approved copy of these plans signed by City staff are required on-site.

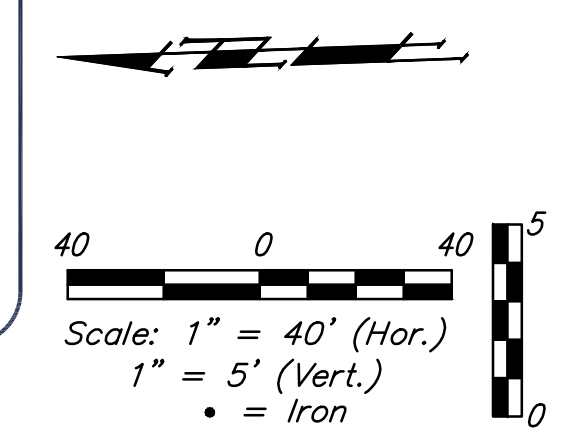
GRAY'S 2ND ADDITION
BLOCK 1



AS BUILTS

KEMILLER ENGINEERING PA

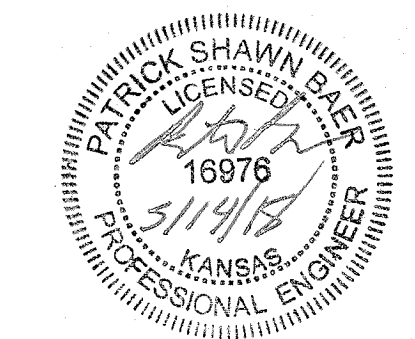
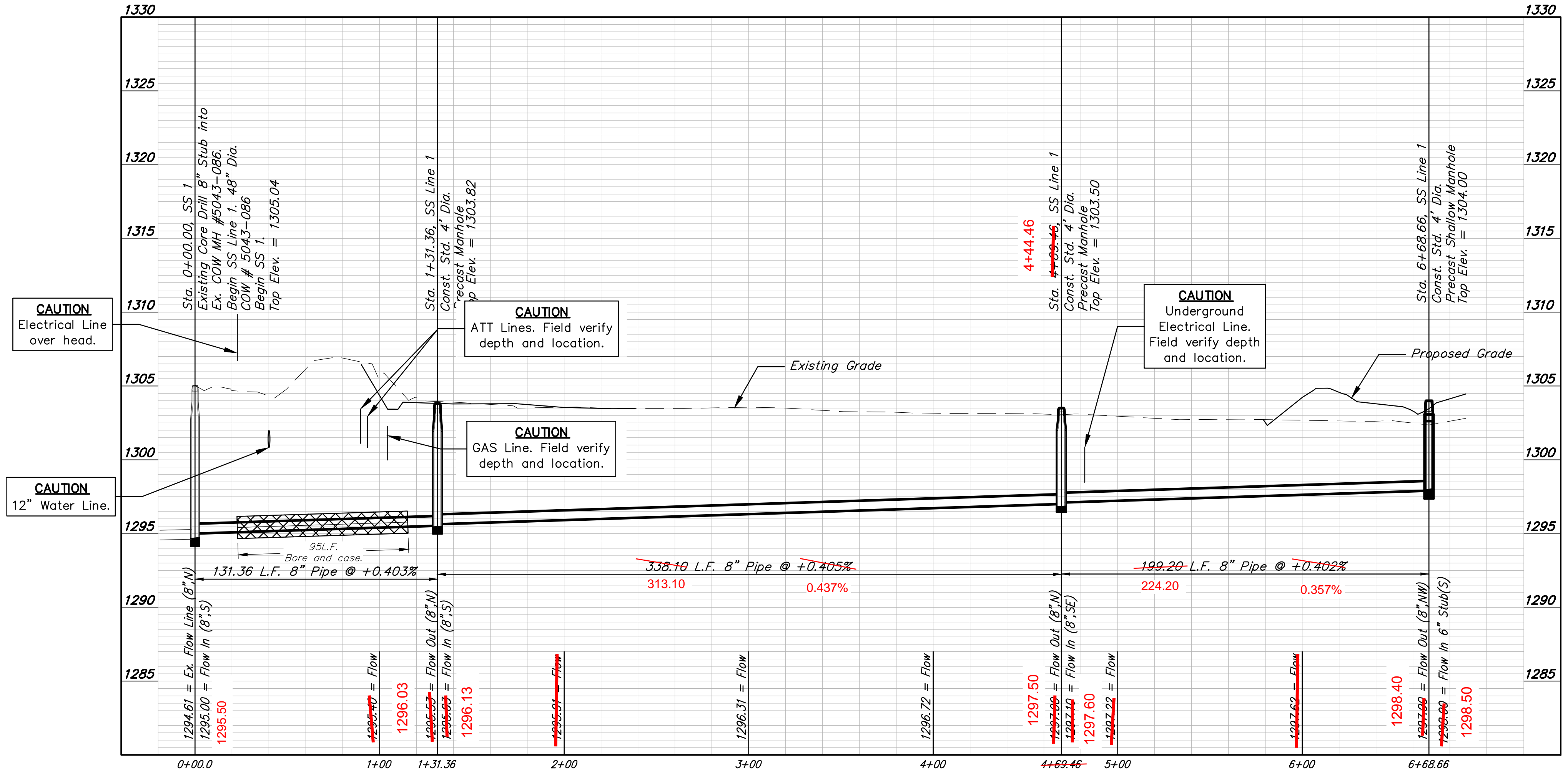
117 E. Lewis,
Wichita, KS 67202 (316)264-0242



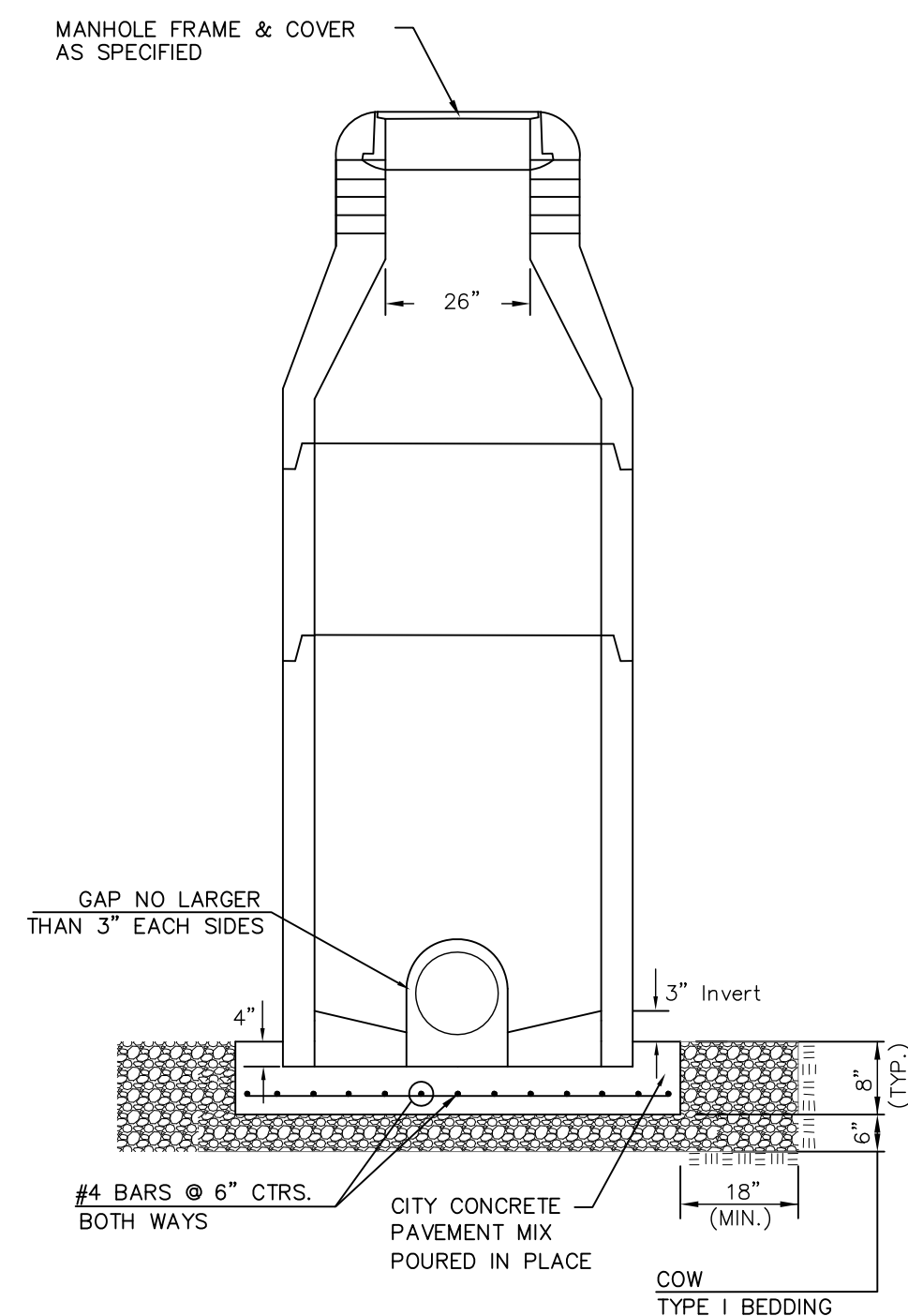
COW BENCHMARK TOP OF HURGUARD ON SW CORNER OF RCBG 750'± WEST OF DUGAN ROAD ALONG THE SOUTHSIDE OF MACARTHUR. ELEV. = 1299.91 NAVD88

#2 BENCHMARK MAG NAIL IN SOUTH FACE OF EAST GATE AT ENTRY TO PROPERTY. ELEV. = 1304.28 NAVD88

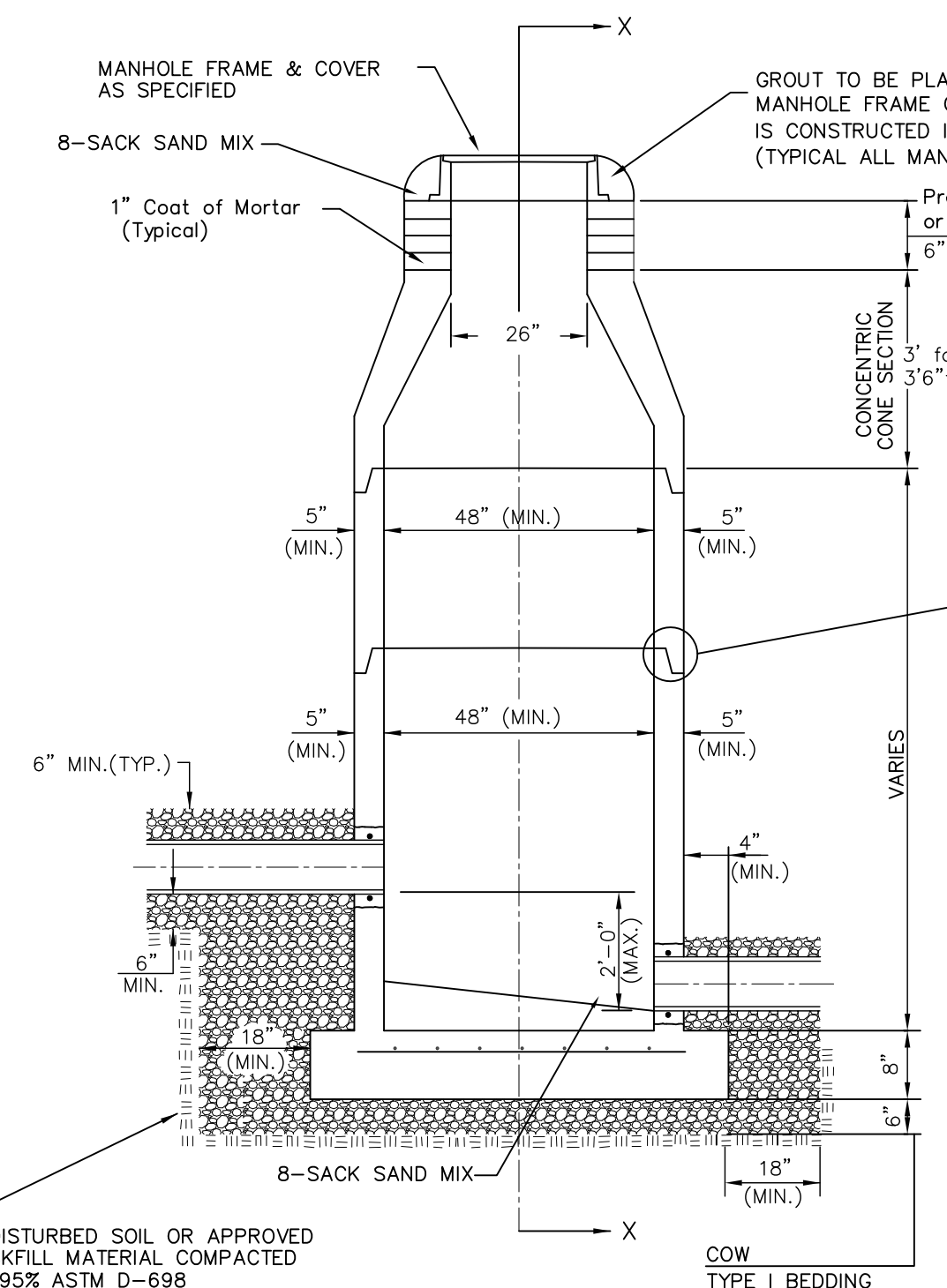
Contractor to get utility permits from Sedgwick County Public Works for work completed within MacArthur Right of Way.



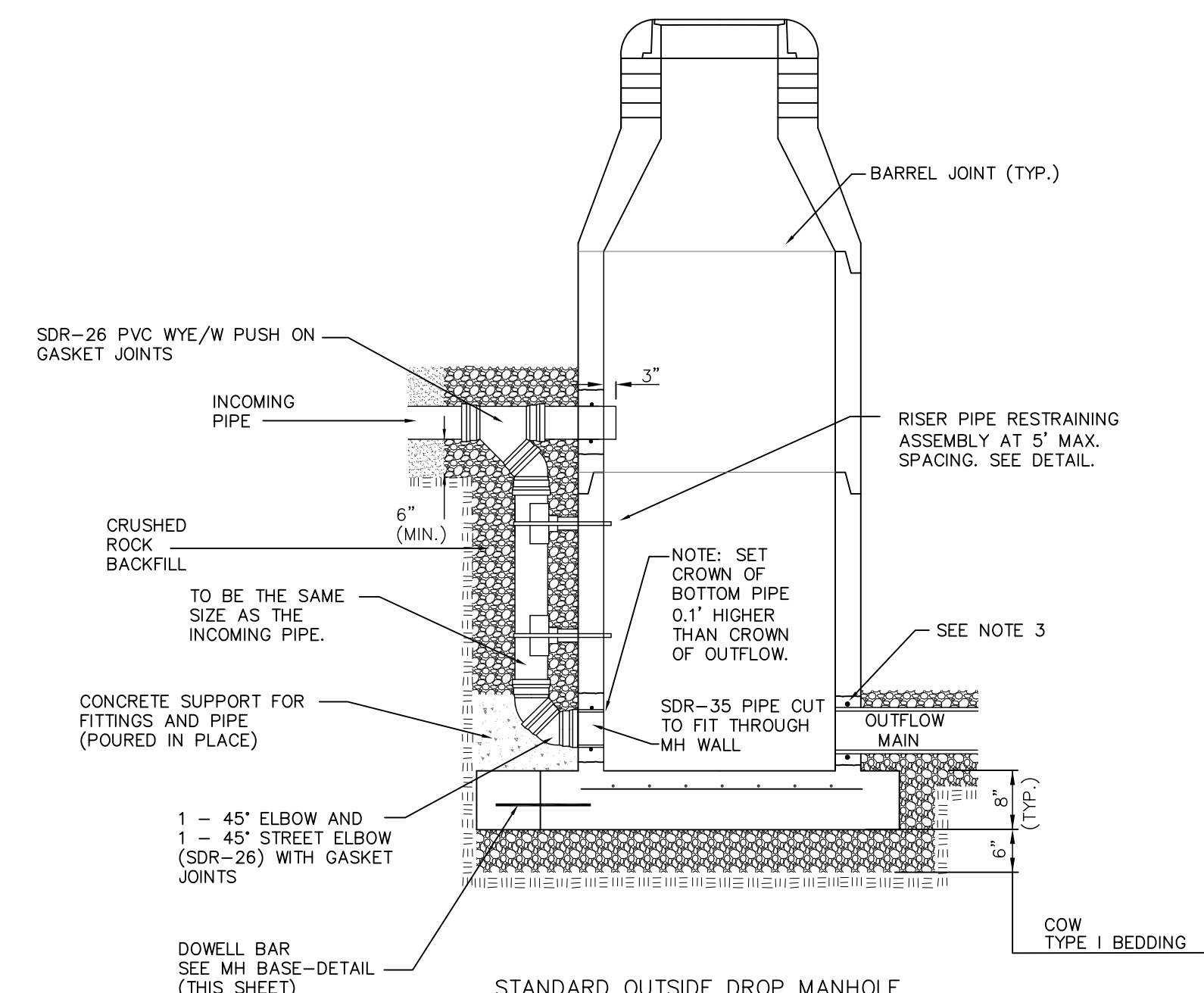
BAUGHMAN COMPANY, P.A.
115 E. Hill, Wichita, KS 67211 P: 316-262-2711 F: 316-262-0149
KANSAS PROFESSIONAL ENGINEER LICENSE # 16976
115 E. Hill, Wichita, Kansas, Sedgwick County, KS 67211



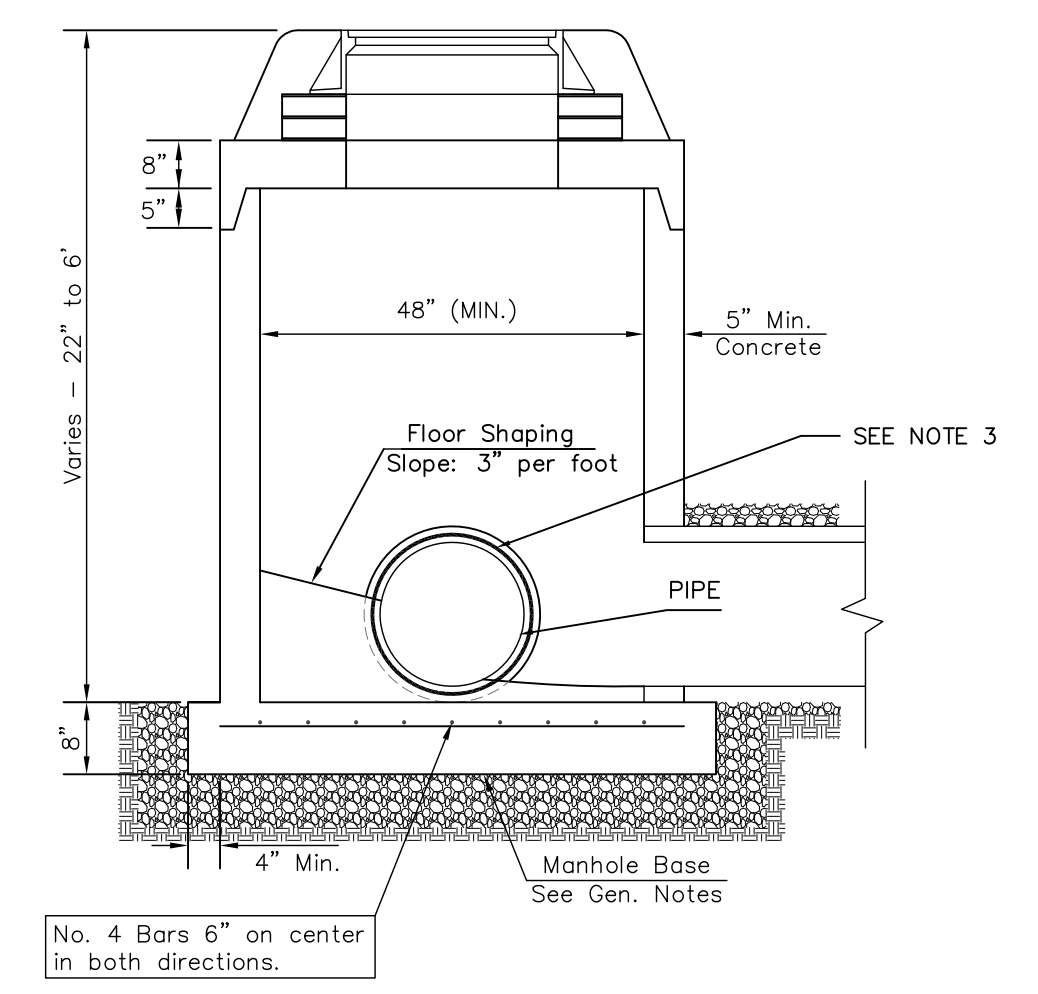
DOG HOUSE MANHOLE
(OVER EXISTING PIPE)
Not to Scale



STANDARD MANHOLE
Not to Scale



STANDARD OUTSIDE DROP MANHOLE
Not to Scale

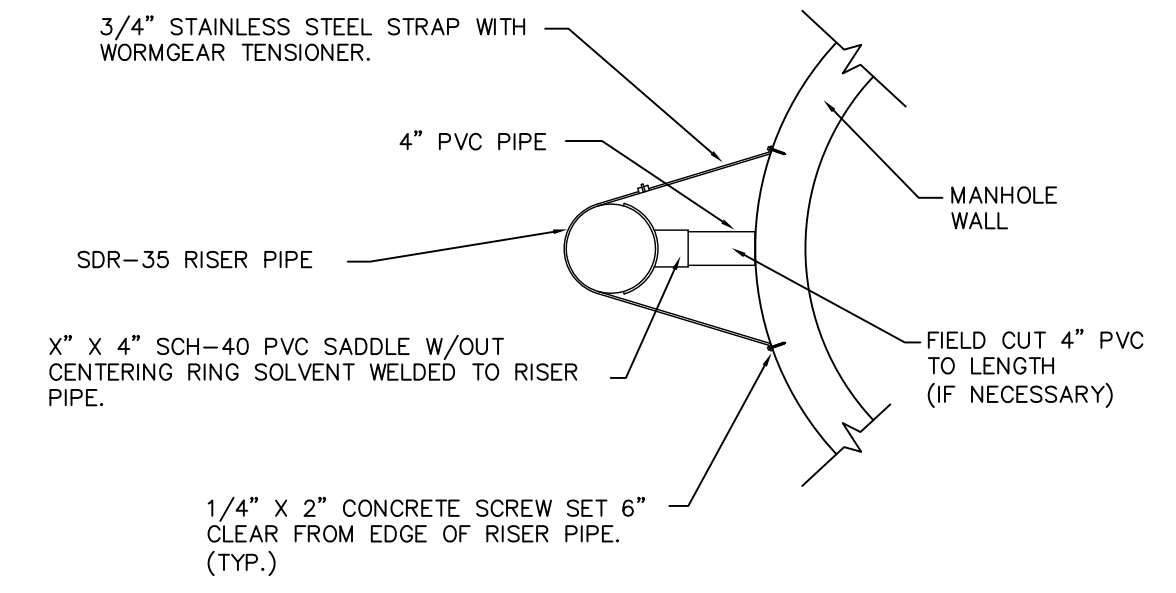


SHALLOW MANHOLE
Not to Scale

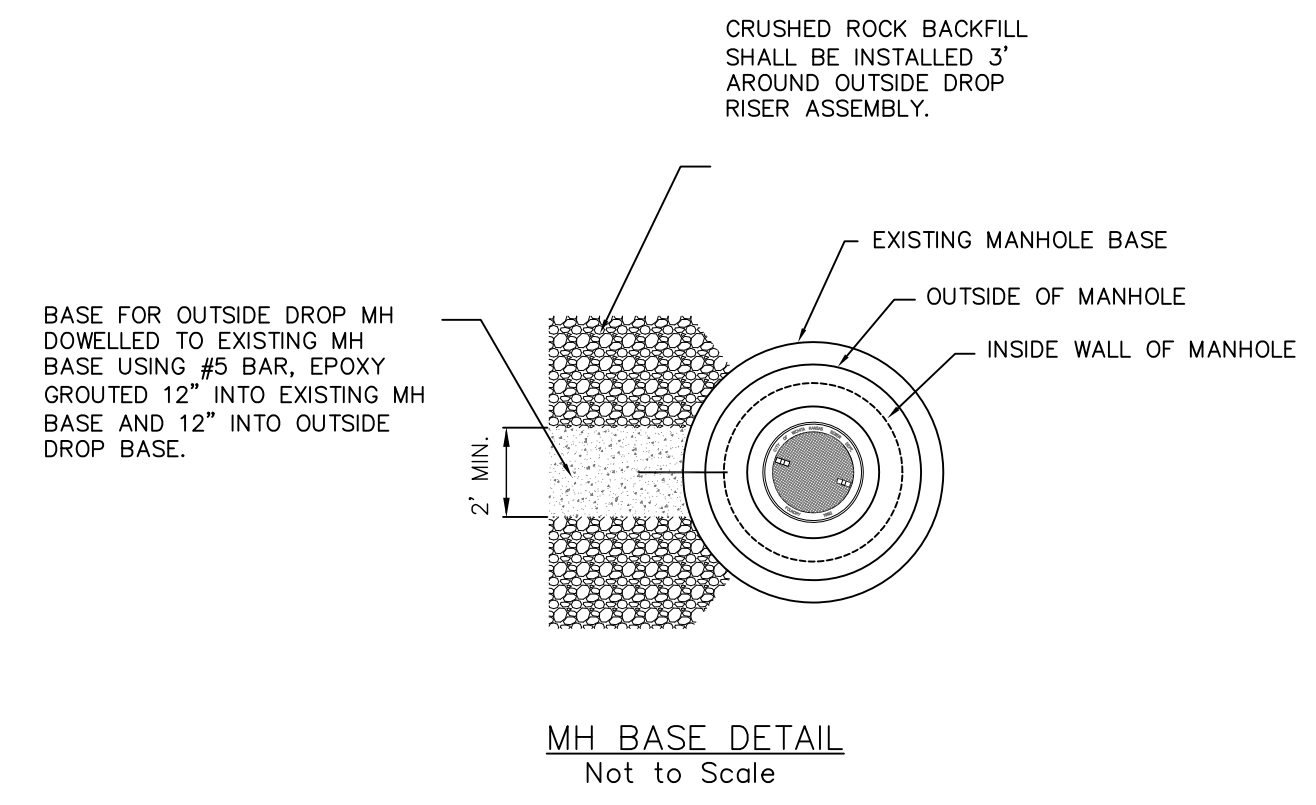
= COW TYPE I BEDDING
 = UNDISTURBED SOIL

PRECAST MANHOLE GENERAL NOTES

- ALL PRECAST CONCRETE MANHOLE SECTIONS SHALL CONFORM TO THE LATEST REVISIONS OF A.S.T.M. C478 AS MODIFIED BY THE SPECIFICATIONS.
- NON-SHRINK GROUT SHALL BE NON-METALLIC TYPE.
- APPROVED FLEXIBLE WATERSTOP SHALL BE INSTALLED TO JOIN THE SEWER PIPE TO THE MANHOLE WALL. THE SEWER PIPE SHALL BE SUPPORTED WITH CRUSHED ROCK A MINIMUM OF 3 FEET FROM THE MANHOLE WALL AND TO THE FIRST JOINT FOR V.C.P. SUCH THAT THE JOINT REMAINS FLEXIBLE.
- ALL INSIDE SURFACES OF THE CONCRETE MANHOLE WHICH WOULD BE EXPOSED TO SEWER GAS SHALL BE COATED PER SECTION 804.4 OF STANDARD SPECIFICATIONS.
- EXTERIOR MANHOLE WALLS SHALL BE COATED PER SECTION 804.4 OF STANDARD SPECIFICATIONS.
- JOINT SEALING COMPOUND SHALL BE PER 804.4 OF STANDARD SPECIFICATIONS.
- ALL MANHOLE SECTION JOINTS THAT WILL BE IN GROUNDWATER OR GREATER THAN 12' DEEP SHALL BE WRAPPED WITH AN EXTERNAL JOINT SEAL PER SECTION 804.4 OF STANDARD SPECIFICATIONS, AS INDICATED BY THE PLANS.
- PRECAST MANHOLES SHALL BE SET AT LEAST 4 INCHES INTO THE MANHOLE BASE FOR DOG HOUSE MANHOLES.
- TOP OF MANHOLE FLOOR SLAB SHALL BE AT LEAST 3 INCHES BELOW THE FLOW LINE OF THE OUTLET PIPE TO INSURE SUFFICIENT MINIMUM THICKNESS OF SHAPED INVERT.
- LIFTING HOLES SHALL BE FILLED WITH NON-SHRINK GROUT AND THE INTERIOR SURFACE COATED AS SPECIFIED.
- MORTAR USED IN MASONRY CONSTRUCTION SHALL CONTAIN 8 SACKS OF CEMENT PER CUBIC YARD. CONCRETE USED IN MANHOLE BASES SHALL CONFORM TO THE REQUIREMENTS OF CONCRETE FOR CONCRETE PAVEMENT CONSTRUCTION AS SPECIFIED IN THE CITY STANDARD PAVING SPECIFICATIONS USING CITY CONCRETE PAVEMENT MIX WITHOUT AIR ENTRAINING ADMIXTURE. MORTAR SHALL BE PLACED AROUND THE MANHOLE RING AS SHOWN ON THE DRAWINGS WHEN MANHOLES ARE CONSTRUCTED IN UNPAVED AREAS. COMPLETED MANHOLE SHALL BE WITHOUT LEAKS AND WATER TIGHT.
- REINFORCING STEEL SHALL BE INSTALLED IN THE MANHOLE BASES AND SHALL CONSIST OF NO.4 BARS PLACED ON 6" CENTERS IN BOTH DIRECTIONS. THE MANHOLE BASE REINFORCEMENT SHALL BE PLACED AT LEAST 3" ABOVE THE BOTTOM OF THE MANHOLE BASE. ALL COSTS FOR FURNISHING AND INSTALLING REINFORCING STEEL SHALL BE INCLUDED IN THE UNIT PRICE BID FOR THE MANHOLE.
- WALL THICKNESS SHALL BE 1" GREATER THAN MANHOLE DIAMETER IN FEET.
- OPENINGS SHALL BE CORE DRILLED INTO THE MANHOLE WALL WHEN OUTSIDE DROPS ARE CONSTRUCTED ON EXISTING MANHOLES. SUCH OPENINGS DRILLED INTO EXISTING MANHOLES SHALL BE AS SMALL AS PRACTICAL TO FACILITATE INSTALLING AND GROUTING THE NEW PIPE IN PLACE. WATERSTOP GASKETS SHALL BE USED WITH P.V.C. PIPE. THE NEW PIPE SHALL BE GROUTED INTO THE OPENING USING AN APPROVED NONSHRINK GROUT FOR THE FULL MANHOLE WALL THICKNESS. THE EXTERIOR OF THE COMPLETED CONNECTION SHALL BE SEALED WITH AN APPROVED BITUMINOUS COATING SUCH THAT THE CONNECTION WILL BE WATER TIGHT. FLOOR OF MANHOLE SHALL BE MODIFIED TO FORM NEW FLOW CHANNEL FOR THE NEW CONNECTION AS INDICATED BY THE DRAWING. THIS WORK, INCLUDING MODIFICATION OF MANHOLE FLOOR, SHALL BE PAID FOR AT THE UNIT PRICE BID FOR OUTSIDE DROP STACK CONSTRUCTED ON EXISTING MANHOLE.
- THE FLOORS OF ALL MANHOLES SHALL BE SHAPED WITH FLOW CHANNELS SUCH THAT THE MANHOLES WILL BE SELF CLEANING AND FREE OF AREAS WHERE SOLIDS COULD BE DEPOSITED AS SEWAGE FLOWS THROUGH THE MANHOLE FROM ALL INLET PIPES TO THE OUTLET PIPE. FLOW CHANNELS SHALL BE FORMED TO MATCH THE BOTTOM HALVES OF THE INFLOWING PIPES AND THE OUTFLOWING PIPE AS SHOWN BY THE DRAWINGS. MANHOLE FLOORS SHALL HAVE SLOPES OF 3 INCHES PER FOOT IN THE AREAS OUTSIDE OF THE FLOW CHANNELS SLOPED TOWARD THE FLOW CHANNELS. PIPES LAID THROUGH MANHOLES SHALL HAVE THE TOP HALF REMOVED TO NEAT LINES FOR THE FULL INSIDE DIAMETER OF THE MANHOLE. MANHOLE FLOORS SHALL THEN BE SHAPED AROUND THE BOTTOM HALF OF THE PIPE WHICH FORMS THE FLOW CHANNEL.
- MANHOLE COVER CASTINGS AND MANHOLE FRAME CASTINGS SHALL CONFORM TO THE REQUIREMENTS AS INDICATED IN THE STANDARD SPECIFICATIONS AND AS SHOWN IN THE STANDARD DETAIL DRAWING.
- THE VERTICAL DROP IN STANDARD MANHOLES SHALL NOT EXCEED 2' REGARDLESS OF PIPE SIZE. THE CROWNS OF INFLOWING PIPES SHALL NEVER BE SET LOWER THAN THE CROWN OF THE OUTFLOWING PIPE.
- STANDARD MANHOLES SHALL BE BID AS STANDARD MANHOLES FOR THE TYPE AND DIAMETER INDICATED. OUTSIDE DROP MANHOLES SHALL BE BID AS STANDARD OUTSIDE DROP MANHOLES FOR THE TYPE AND DIAMETER INDICATED. ALL MANHOLE DIAMETERS WILL BE 4' UNLESS INDICATED OTHERWISE.
- PRECAST CONCRETE SPACERS OR BRICK MASONRY COLLAR SHALL BE INSTALLED BETWEEN THE CAST IRON FRAME AND THE CONCENTRIC CONE. THE COLLAR WILL HAVE 8" WALLS AND A VERTICAL HEIGHT OF 6" MINIMUM AND 18" MAXIMUM. A 1" COAT OF MORTAR WILL BE PLASTERED ON THE OUTSIDE OF THE COLLAR. THE USE OF PRE-CAST CONCRETE SPACERS FOR MANHOLE TOP ADJUSTMENT IS ALSO ALLOWED.
- THE FULL DIAMETER OF THE MANHOLE SHALL EXTEND THE ENTIRE DEPTH OF THE MANHOLE TO THE CONE SECTION. NO REDUCTION IN MANHOLE DIAMETER WILL BE ALLOWED.



RISER PIPE RESTRAINING ASSEMBLY
Not to Scale



MH BASE DETAIL
Not to Scale

SANITARY SEWER MANHOLE DIAMETERS

| DIAMETER | DEPTH | PIPE SIZE |
|----------|----------|-----------|
| 4' | 0'-15' | 8"-18" |
| 5' | >15'-30' | 21"-30" |
| 6' | >30' | 36"-60" |

REVISION APRIL 2017 REMOVED CLEANOUT ON OUTSIDE DROP MANHOLE

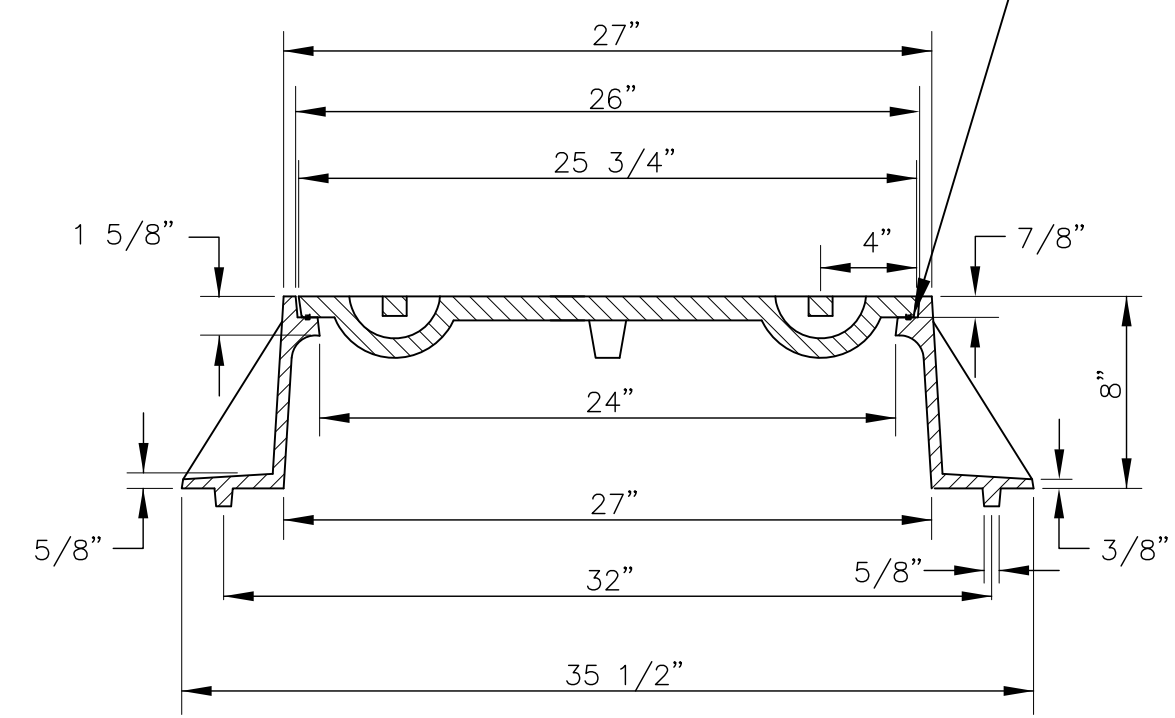
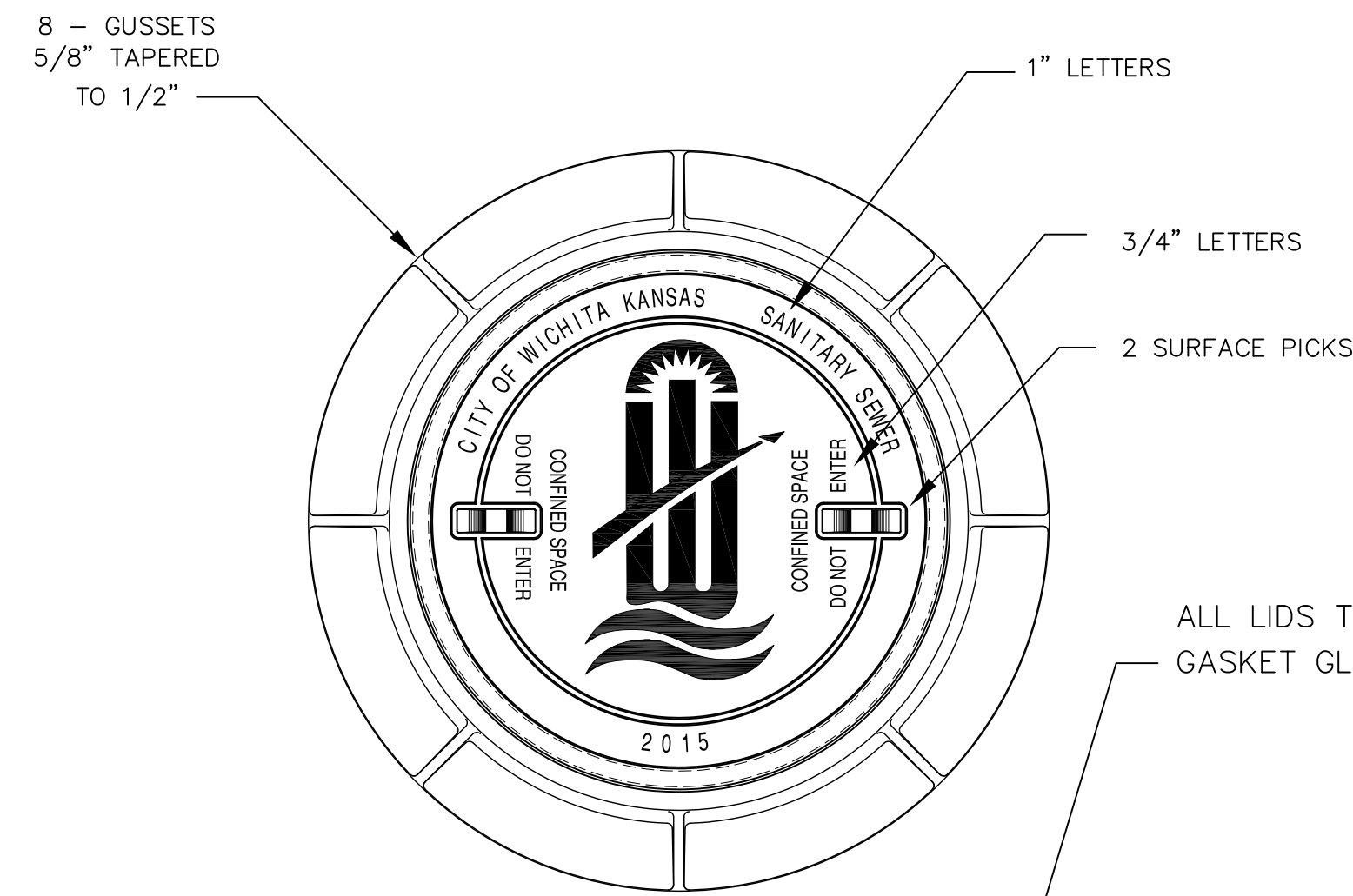
PRECAST SANITARY SEWER MANHOLE

CITY ENGINEER
GARY JANZEN, P.E.

| | | |
|----------------|------------|------|
| PROJECT NUMBER | OCA NUMBER | DATE |
|----------------|------------|------|

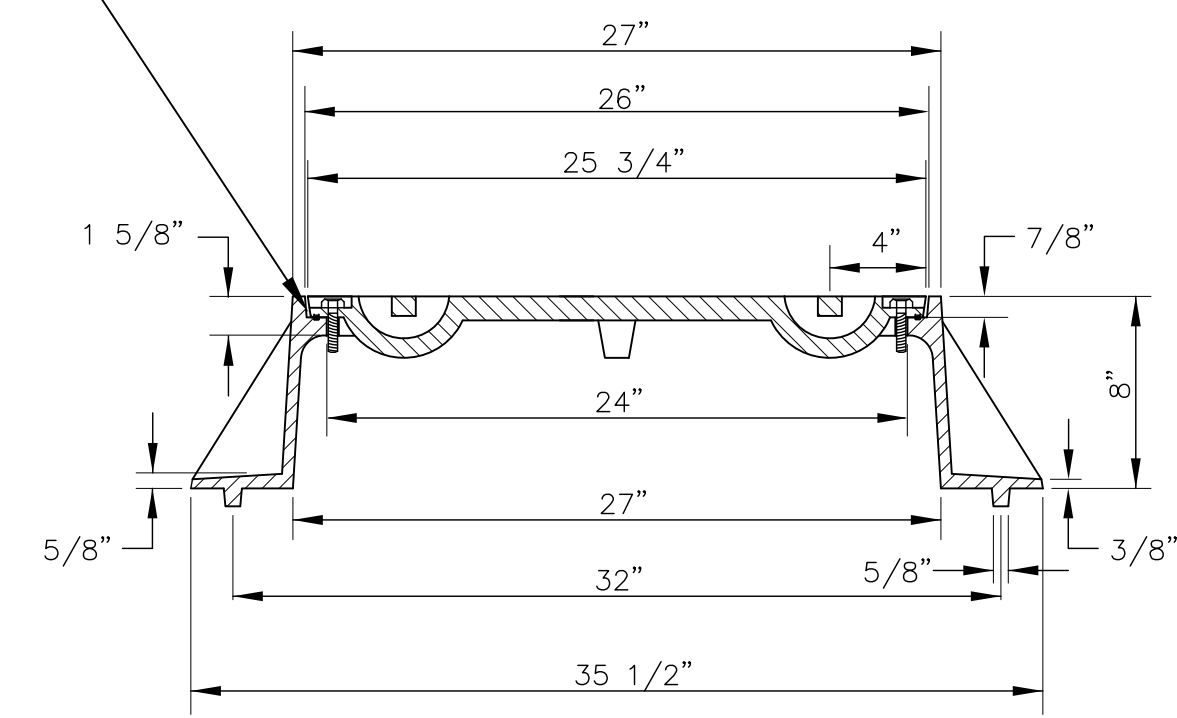
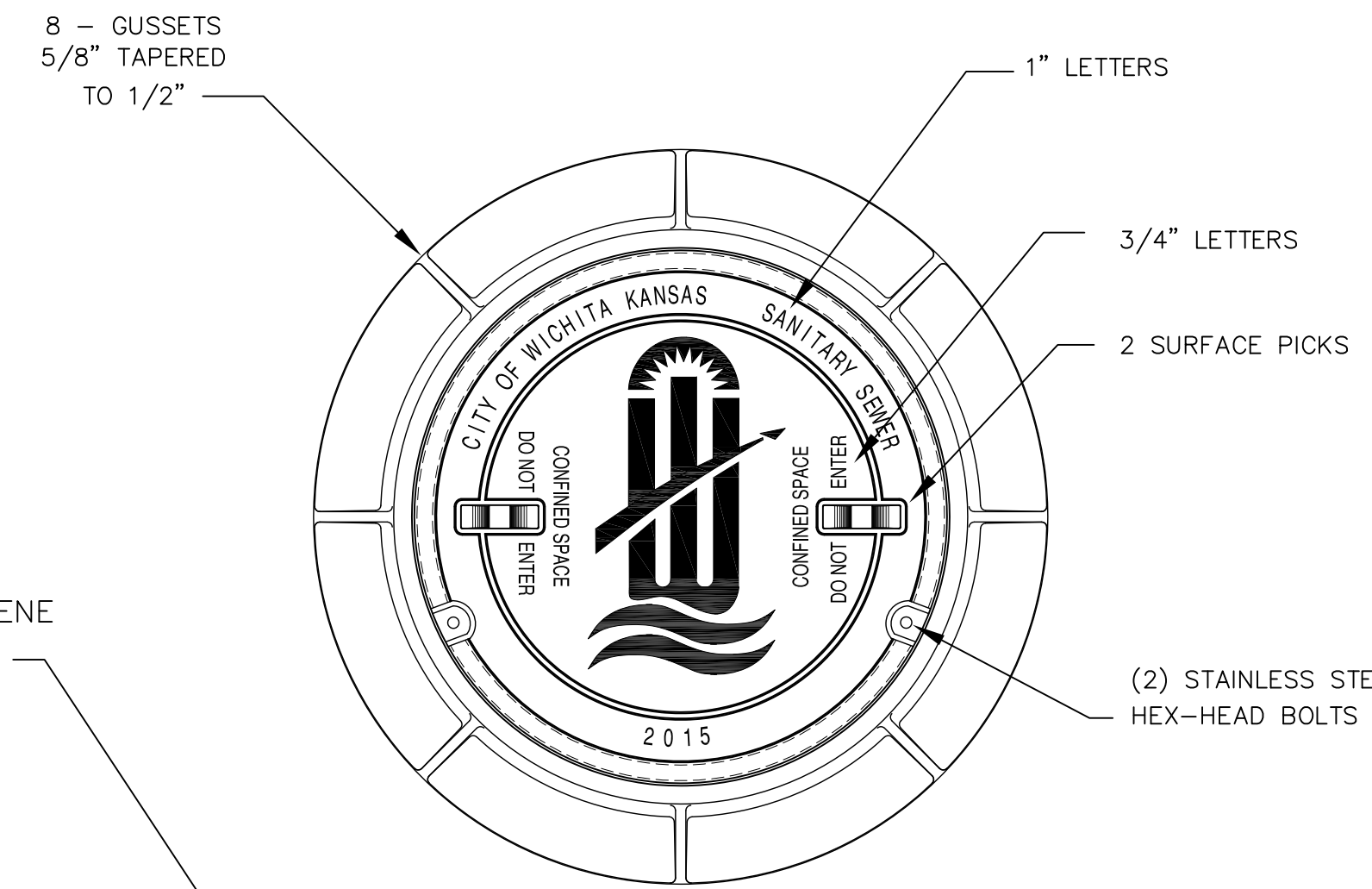
CITY ENGINEER'S OFFICE
CITY HALL - SEVENTH FLOOR
455 NORTH MAIN STREET
WICHITA, KANSAS 67202-1620
(316) 268-4501

SHEET
3 of 6



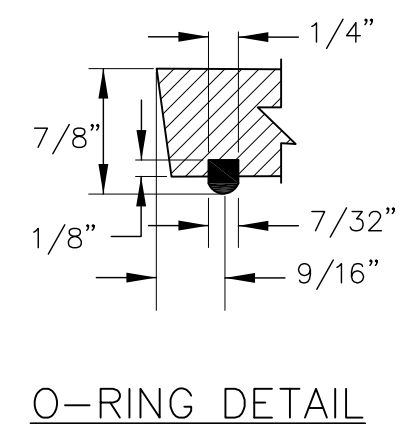
STANDARD MANHOLE FRAME & COVER
DEETER #1261 OR EJIW #1936-Z1

NOTE:
1. FURNISHED WITH MACHINED HORIZONTAL BEARING SURFACE.

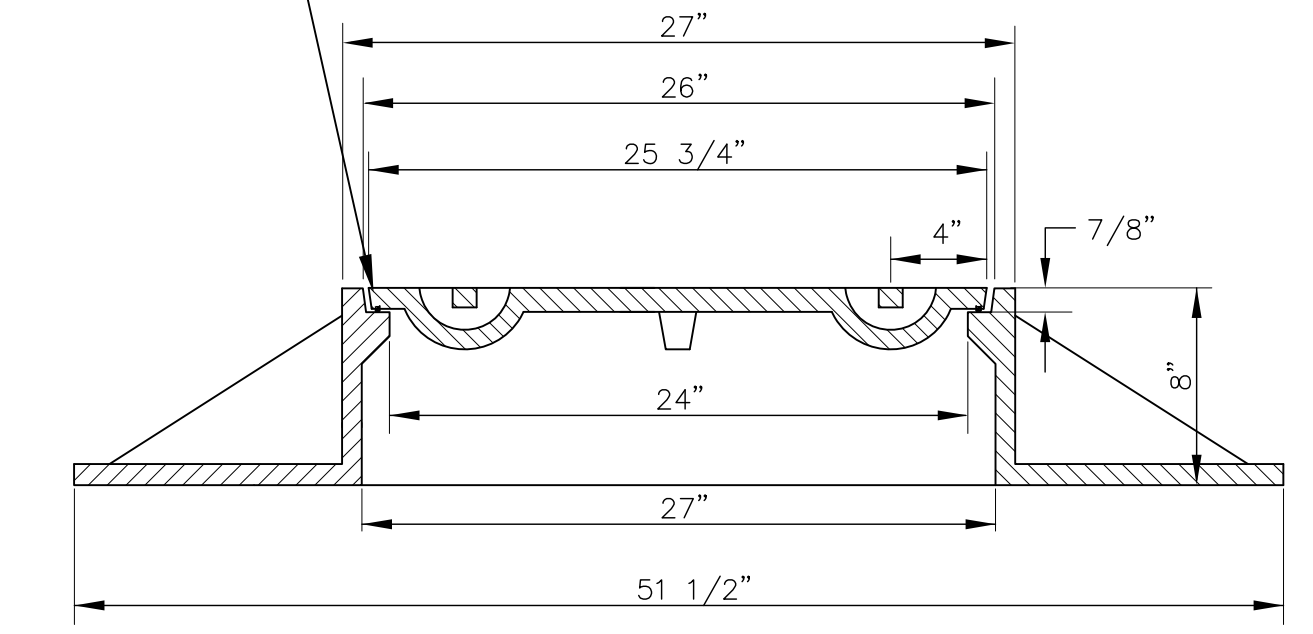
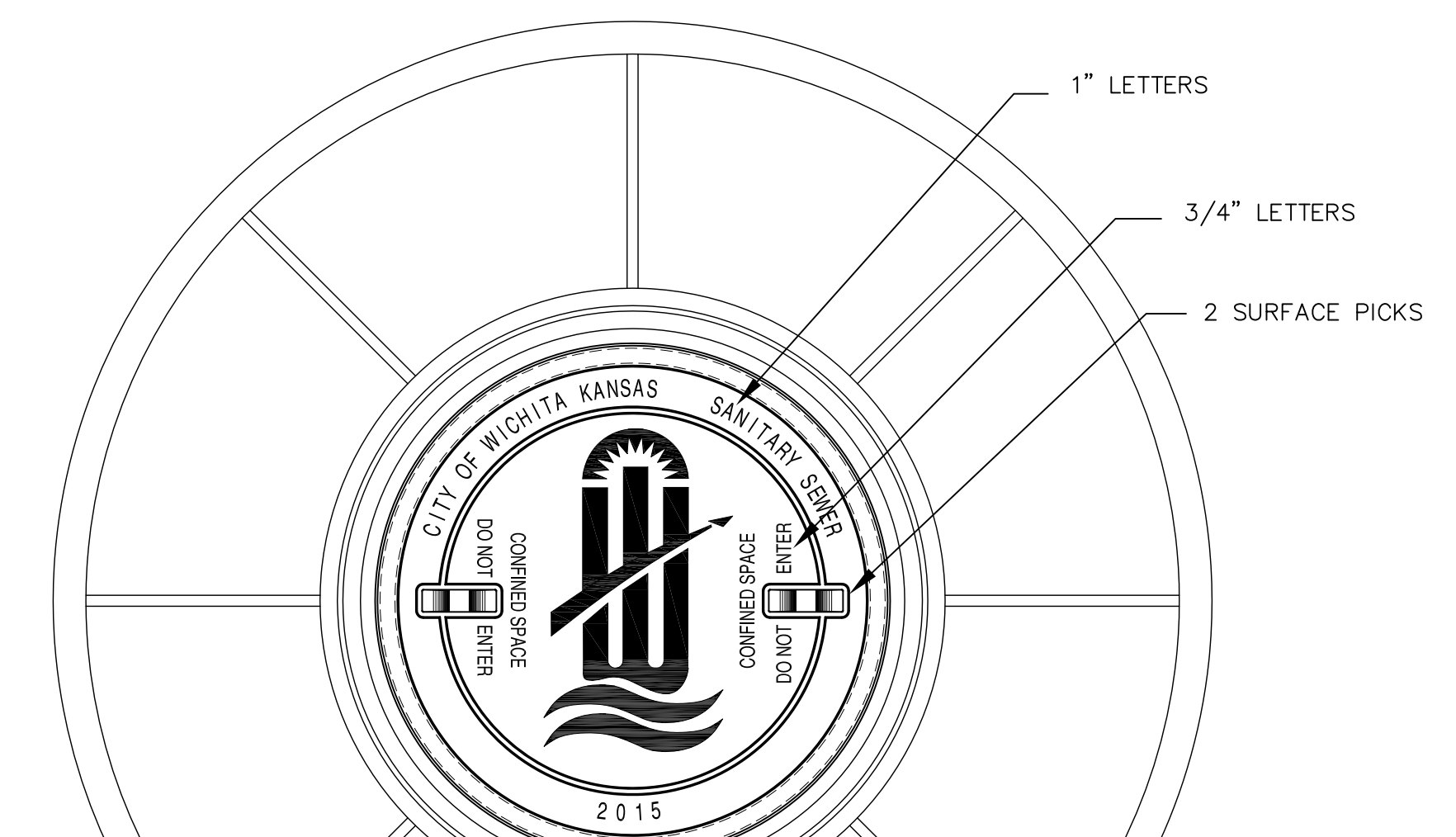


BOLT DOWN MANHOLE FRAME & COVER
DEETER #1261 OR EJIW #1936-Z1

NOTE:
1. FURNISHED WITH MACHINED HORIZONTAL BEARING SURFACE.



ALL LIDS TO BE FURNISHED WITH O-RING/NEOPRENE GASKET GLUED IN THE COVER BEARING SURFACE.



WIDE FLANGED FRAME & COVER
DEETER #1261A

NOTE:
1. FURNISHED WITH MACHINED HORIZONTAL BEARING SURFACE.

GENERAL NOTES

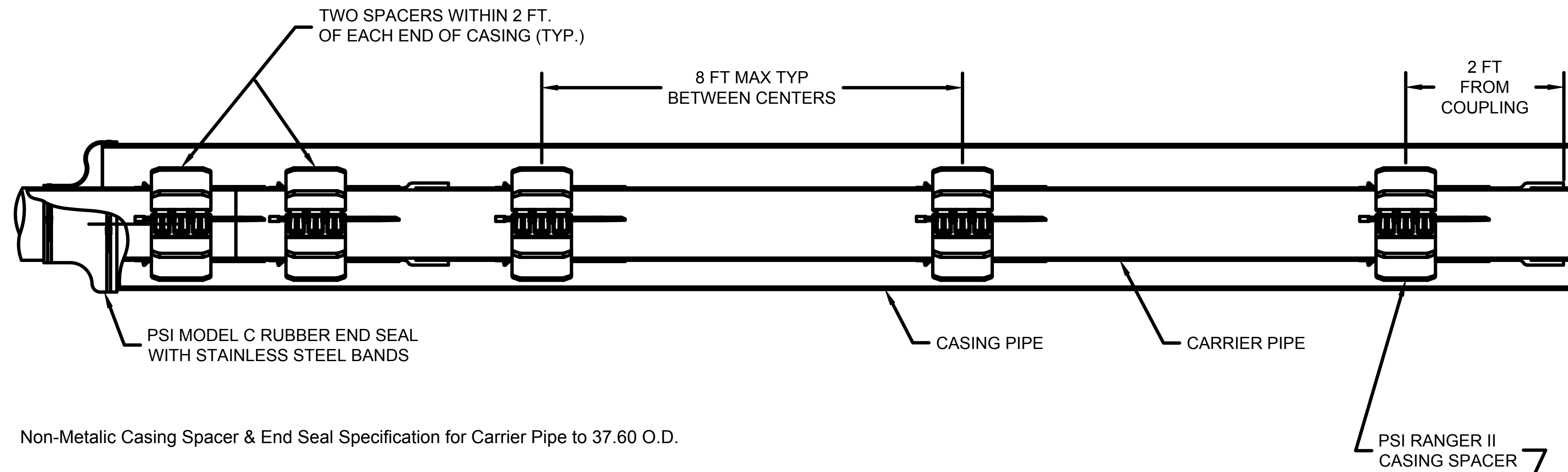
- MANHOLE CASTINGS SHALL BE MANUFACTURED USING GOOD QUALITY GRAY IRON CONFORMING TO CLASS 30 OF A.S.T.M. DESIGNATION A-48. DIMENSIONS SHOWN ON THE DETAILED DRAWINGS SHALL BE CONSIDERED AS MINIMUM REQUIREMENTS AND ANY DEVIATIONS FROM THE DIMENSIONS SHOWN MUST BE SPECIFICALLY APPROVED. THE FINISHED CASTINGS SHALL BE OF UNIFORM QUALITY, FREE FROM BLOWHOLES, POROSITY, HARD SPOTS, SHRINKAGE DISTORTIONS OR OTHER DEFECTS.
- MANHOLE CASTINGS SHALL BE MANUFACTURED SUCH THAT A COVER MANUFACTURED BY ANY ONE FOUNDRY WILL FIT INTERCHANGEABLY INTO A FRAME MANUFACTURED BY ANOTHER FOUNDRY AND STILL MEET ALLOWABLE CLEARANCES AND NON-ROCKING REQUIREMENTS. THIS WILL REQUIRE MANUFACTURING OF THE MATCHING FACES ON THE COVER AND THE FRAME TO CLOSE TOLERANCES.
- THE OUTSIDE CIRCUMFERENCE OF THE VERTICAL FACE OF THE COVER AND THE INSIDE CIRCUMFERENCE OF THE VERTICAL FACE IN THE FRAME RECESS SHALL BE MANUFACTURED TO TOLERANCES SUCH THAT THE CLEARANCE BETWEEN THE COVER AND FRAME WILL NOT EXCEED 1/8" AT ANY POINT AROUND THE CIRCUMFERENCE OF THE COVER. THE SEATING SURFACES BETWEEN THE COVER AND FRAME SHALL BE MACHINED SUCH THAT THESE SEATING SURFACES SHALL MAKE FULL CONTACT FOR THEIR FULL CIRCUMFERENCE TO PRECLUDE THE COVER FROM ROCKING IN THE FRAME.
- THE MANHOLE FRAME AND COVER SHALL BE MARKED WITH LETTERING INDICATING THE NAME OF THE MANUFACTURER AND THE YEAR WHEN THE COVER OR FRAME WAS CAST. THE COVER SHALL BE FURTHER IDENTIFIED WITH REGARDS TO OWNERSHIP USING LETTERS AT LEAST 1" IN HEIGHT. THIS IDENTIFICATION SHALL BE "CITY OF WICHITA SANITARY SEWER". THE TOP SURFACE OF THE COVER SHALL BE MANUFACTURED IN WITH CITY OF WICHITA DESIGN AS INDICATED ON THE DRAWINGS. SMOOTH BLOCKOUTS SHALL BE UTILIZED TO HIGHLIGHT THE LETTERING ON THE COVER SURFACE. THE TOTAL AREA OF SMOOTH SURFACE BLOCKOUT SHALL NOT EXCEED THE AREA AS INDICATED ON THE DRAWING. POSITIONING OF SMOOTH BLOCKOUTS AND LETTERING MAY VARY FROM THAT SHOWN ON THE DETAILED DRAWING.



| | | |
|--|------------|------------------------|
| MANHOLE FRAME AND COVER (SANITARY SEWER) | | |
| CITY ENGINEER GARY JANZEN, P.E. | | |
| PROJECT NUMBER | OCA NUMBER | DATE |
| CITY ENGINEER'S OFFICE CITY HALL - SEVENTH FLOOR 455 NORTH MAIN STREET WICHITA, KANSAS 67202-1620 (316) 268-4501 | | SHEET 4 of 6 |

REVISED: MARCH 2016

CASING SPACER DETAIL



Non-Metallic Casing Spacer & End Seal Specification for Carrier Pipe to 37.60 O.D.

A. Casing Spacers

Upon completion of the installation of the steel pipe encasement, the contractor shall furnish and install a Ranger II® boltless casing spacer on the carrier pipe as described below. Casing spacers shall be spaced a maximum of eight (8) feet apart along the length of the carrier pipe with one casing spacer within two (2) feet of each side of a pipe joint and the rest evenly spaced. Wood skids are not an acceptable method of supporting the carrier pipe.

1. Casing spacers shall be all non-metallic (polypropylene), molded in segments for field assembly without any special tools. Spacer segments shall be secured around carrier pipe by insertion of a Slide-Lock. The casing spacer polymer shall contain ultraviolet inhibitors and shall have a minimum compressive strength of 3,000 psi, an 800 Volts/mil dielectric strength and impact strength of 1.5 ft-lbs./inch. Each casing spacer shall have full length, integrally molded skids extending beyond the bell or mechanical joint of the carrier pipe. Casing Spacers shall be specified to "Clear Bell Only" or "Centered/Restrained".

2. Spacers shall be at least as wide as listed below.

| Carrier Pipe Diameter Inches | (mm) | Ranger II Model | Length Inches | (mm) |
|---------------------------------|--------------|--------------------|------------------|-------|
| 0.83 to 3.07" | (21 to 78) | Micro | 2.13" | (54) |
| 2.48 to 5.51" | (63 to 140) | Mini | 3.15" | (80) |
| 5.51 to 16.65" | (140 to 423) | Midi | 5.12" | (130) |
| 16.77 to 25.98" | (426 to 660) | Medi | 6.87" | (175) |
| 21.22 to 37.60" | (539 to 955) | Maxi | 8.86" | (225) |

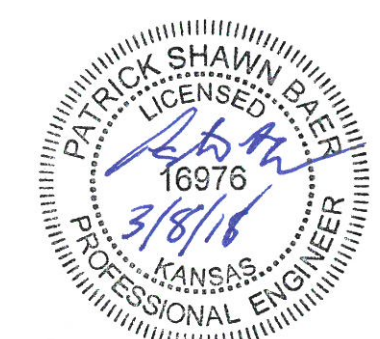
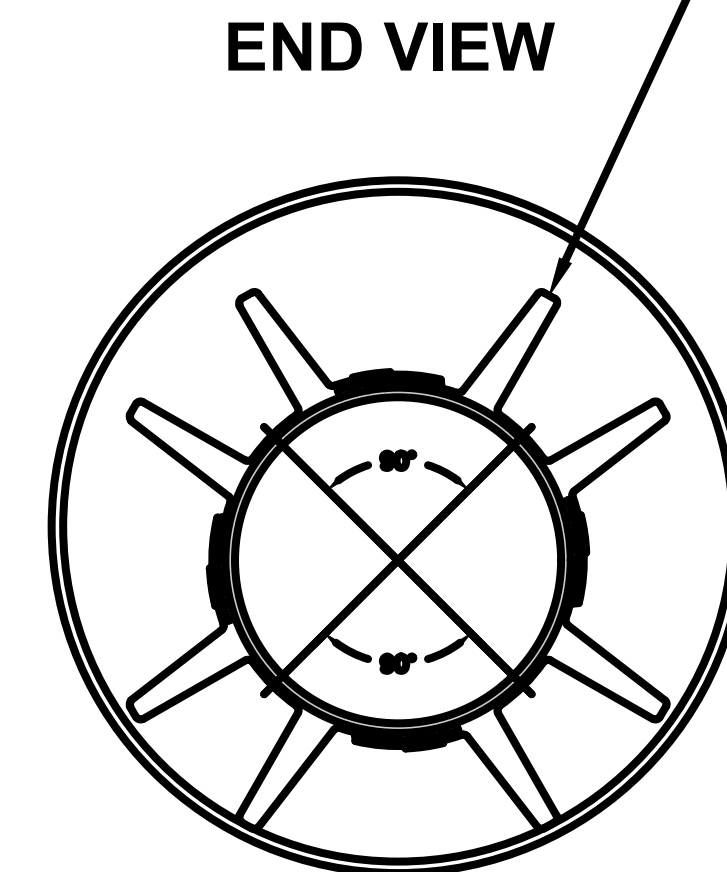
3. The casing spacers shall be the PSI Ranger II® Casing Spacers as manufactured by Pipeline Seal and Insulator, Inc., Houston, Texas.

B. End Seals

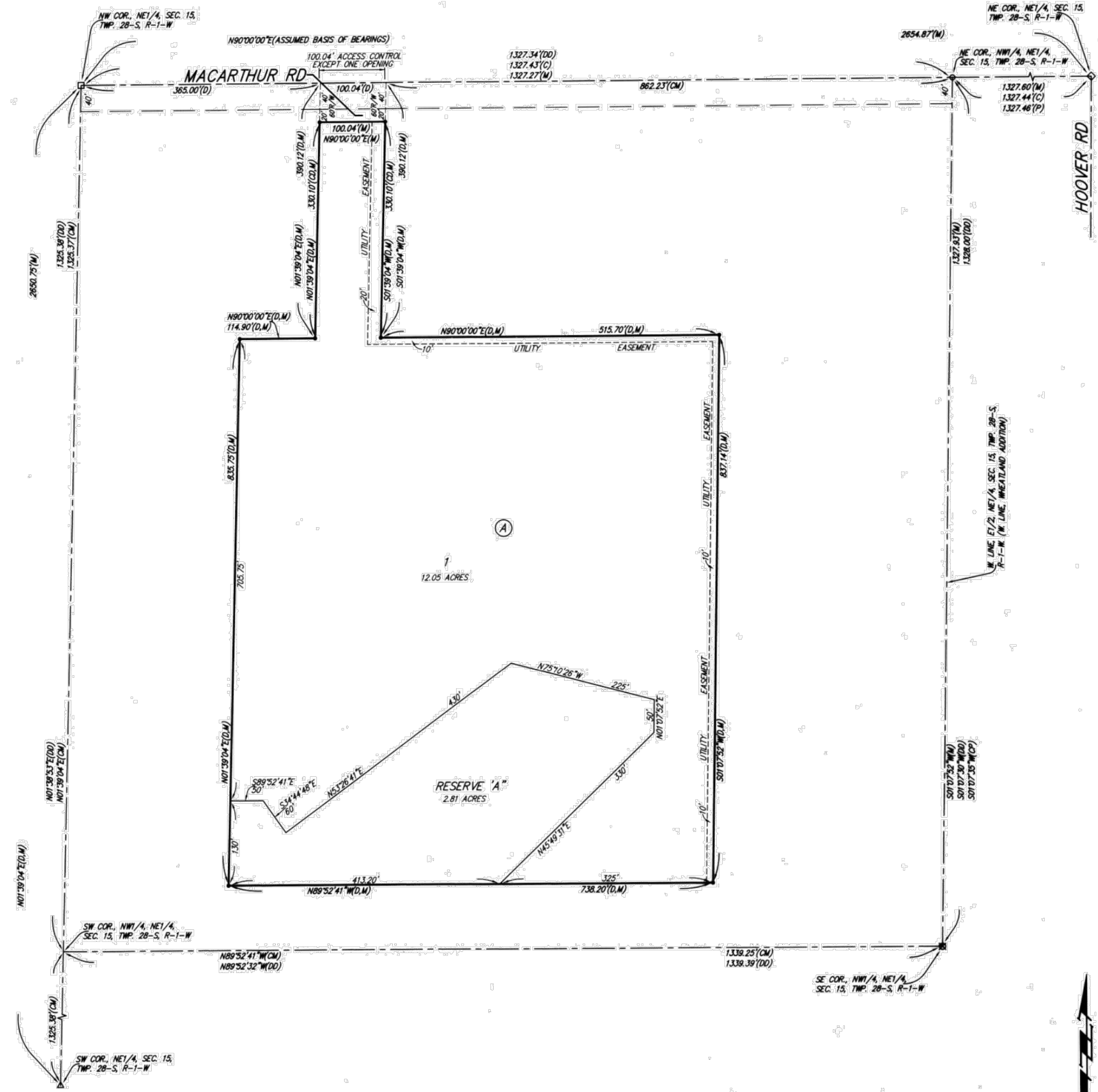
After insertion of the carrier pipe into the casing, the ends of the casing shall be closed by installing 1/8" thick synthetic rubber end seals equal to the PSI Model "C" end seal as manufactured by Pipeline Seal and Insulator, Inc., Houston, Texas.

ISO 9000 Registration

Each casing spacer and end seal shall be manufactured at a facility that has a Registered ISO 9001:2000 Quality Management System. Copy of current ISO 9001:2000 Registration shall be provided with material submittal.



WICHITA UNION STOCKYARDS ADDITION WICHITA, SEDGWICK COUNTY, KANSAS



MINIMUM BUILDING PAD ELEVATIONS FOR LOWEST OPENING TO THE STRUCTURES

| LOT | BLOCK | ELEVATION |
|-----|-------|-----------|
| 1 | A | 1283.1 |

NOTE: EXISTING BLANKET UTILITY SERVICE GAS COMPANY RIGHT-OF-WAY AGREEMENT OVER THIS AND OTHER PROPERTY, (MISC. BOOK 152, PAGE 521)

EXISTING 4" CITIES SERVICE OIL COMPANY RIGHT-OF-WAY AGREEMENT, ORIGINAL LOCATION APPROXIMATE PER DOCUMENT AND LOCATION CAN NO LONGER BE REPRODUCED, (MISC. BOOK 372, PAGE 453, AND LAST ASSIGNED TO SEMINOLE TRANSPORTATION AND GATHERING, INC.

BLANKET EASEMENT FOR TELECOMMUNICATION RIGHTS TRANSFERRED TO SEA ORICE COMMUNICATION COMPANY OVER THE NE 1/4 OF SEC. 15, TWP. 28-S, R-1-E IN THE DOCUMENT ENTITLED "MEMORANDUM OF TRANSFER AND CONTRIBUTION OF TELECOMMUNICATION RIGHTS" RECORDED IN PLAT 2333, PAGE 11.

NOTE: A drainage plan has been developed for the plat and all drainage easements, rights-of-way, or reserves shall remain as established grades or as modified with the approval of the applicable City or County Engineer and unobstructed to allow for the convenience of stormwater.

State of Kansas) SS We, Baughman Company, P.A., Surveyors in aforesaid county and state do hereby certify that we have surveyed and plotted "WICHITA UNION STOCKYARDS ADDITION", Wichita, Sedgwick County, Kansas and that the accompanying plat is a true and correct exhibit of the property surveyed, described as follows: That part of the Northeast Quarter of Section 15, Township 28 South, Range 1 West of the 6th Principal Meridian, Sedgwick County, Kansas described as follows: Commencing at the northwest corner of the Northwest Quarter of said Northeast Quarter; thence S90°00'00"E along the north line of the Northwest Quarter of said Northeast Quarter, 365.00 feet to a point of beginning; thence continuing S90°00'00"E along the north line of the Northwest Quarter of said Northeast Quarter, 100.04 feet; thence S01°39'04"W, 390.12 feet; thence S90°00'00"E, 515.70 feet; thence S01°07'52"W, 837.14 feet; thence N89°52'41"W, 738.20 feet; thence N01°39'04"E, 835.75 feet; thence S90°00'00"E, 114.90 feet; thence N01°39'04"E, 390.12 feet to the point of beginning.

Existing public easements, building setbacks, access controls, and dedications, if any, being vacated by virtue of K.S.A. 12-512b, as amended.

Baughman Company, P.A.

Michael G. Conroy, Surveyor
5-25-2017

Know all men by these presents that we, the undersigned, have caused the land in the surveyors certificate to be plotted into a Lot, a Block, a Street, and a Reserve to be known as "WICHITA UNION STOCKYARDS ADDITION", Wichita, Sedgwick County, Kansas. The utility easements are hereby granted as indicated for the construction and maintenance of all public utilities. No signs, light poles, private drainage systems, masonry trash enclosures or other structures shall be located within public utility easements unless permitted by the Public Works Department of the appropriate governing body. The street is hereby reserved for open space, landscaping, lakes, cabin/pavement structures, drainage purposes, and floodplain. No fill, change of grade, creation of channel, or any other work shall be carried on within said Reserve "A" without the permission of the Engineer for the appropriate governing body. Reserve "A" shall be owned and maintained by the owner of Lot 1, Block A, and/or their successors/assigns; and/or the lot owners association for the addition. Access controls shall be as depicted on the face of the plat and are hereby granted to the City of Wichita, Kansas. The permitted opening location shall be as determined by the Engineer of the City of Wichita, Kansas. The Minimum Building Pad Elevation for the lowest opening to the structures on Lot 1, Block A, shall be as indicated on the face of the plat.

Michael J. Andra and Tina M. Andra
Living Trust dated May 24, 2004

Michael J. Andra, Trustee
Tina M. Andra, Trustee

State of Kansas) SS The foregoing instrument acknowledged before me, this 5th day of JUNE, 2017, by Michael J. Andra, Trustee of the Michael J. Andra and Tina M. Andra Living Trust dated May 24, 2004 on behalf of the trust.

Judith M. Terhune, Notary Public
My App. Exp. 11-7-17

State of Kansas) SS The foregoing instrument acknowledged before me, this 5th day of JUNE, 2017, by Tina M. Andra, Trustee of the Michael J. Andra and Tina M. Andra Living Trust dated May 24, 2004 on behalf of the trust.

Judith M. Terhune, Notary Public
My App. Exp. 11-7-17

This plat of "WICHITA UNION STOCKYARDS ADDITION", Wichita, Sedgwick County, Kansas has been submitted to and approved by the Wichita-Sedgwick County Metropolitan Area Planning Commission, Wichita, Kansas.

Dated this 4th day of MAY, 2017.
Wichita-Sedgwick County Metropolitan Area Planning Commission

David W. Foster, Chairman
Date Miller, Secretary

This plat approved and all dedications shown hereon accepted by the City Council of the City of Wichita, Kansas, this 27th day of June, 2017.

Jeff Loggswell, Mayor, City of Wichita
Karen Sublett, City Clerk

Reviewed in accordance with K.S.A. 58-2005 on this 6th day of JUNE, 2017.

Tricia L. Robella, P.S. #1246
Deputy County Surveyor
Sedgwick County, Kansas

Entered on transfer record this 11th day of July, 2017.
Kelly B. Arada, County Clerk

State of Kansas) SS This is to certify that this plat has been filed for record in the office of the Register of Deeds, this 11th day of JULY, 2017 at 1:23 a clock P.M. and is duly recorded.

Tonya Buckingham, Register of Deeds
Judy J. Paget, Deputy

We the undersigned holders of a mortgage on the above described property, do hereby consent to this plat of "WICHITA UNION STOCKYARDS ADDITION", Wichita, Sedgwick County, Kansas.

Simmons First National Bank
RAY BURFORD

State of Kansas) SS The foregoing instrument acknowledged before me, this 5th day of JUNE, 2017, by RAY BURFORD, V.P. of Simmons First National Bank, on behalf of the bank.

Judith M. Terhune, Notary Public
My App. Exp. 11-7-17

Baughman Company, P.A.
115 Ellis St., Wichita, KS 67211, P 316-262-0149
F 316-262-0149
www.baughmanpa.com